

Lloyd's Register of Shipping. SURVEYS FOR FREEBOARD. (COMPUTATION FOR STEAMER, SAILING SHIP, TANKER.)

Ship's Name: PENTHIEVRE, Official Number: , Nationality and Port of Registry: FRENCH NANTES, Gross Tonnage: 1731, Date of Build: , Port of Survey: , Date of Survey: 9 OCT 1951, Surveyor's Signature: , Particulars of Classification: +100 A.1.

Moulded Dimensions: Length 253.75', Breadth 37.5', Depth 20.5', Moulded displacement at moulded draught = 85 per cent. of moulded depth 3565 tons, Coefficient of fineness for use with Tables 753.

DEPTH FOR FREEBOARD (D). Moulded depth 20.50, Stringer plate .04, Sheathing on exposed deck T((L-S)/L) = , Depth for Freeboard (D) = 20.54.

DEPTH CORRECTION. (a) Where D is greater than Table depth (D-Table depth) R = (20.54-16.9) 3.63 1.952 = +7.09', (b) Where D is less than Table depth (if allowed) (Table depth-D) R = , If restricted by superstructures.

ROUND OF BEAM CORRECTION. Moulded Breadth (B) 37.50', Standard Round of Beam = B x 12 / 50 = 9.0, Ship's Round of Beam = 9.5, Difference .5, Restricted to , Correction = Diff / 4 x (1 - S1/L) = .5 / 4 x 5495 = -.07'.

DEDUCTION FOR SUPERSTRUCTURES.

	Mean Covered Length (S)	Equivalent Enclosed Length (S1)	Height	Height Correction	Effective Length (E)
Poop enclosed	23.50	23.50	7.0	-	23.50
" overhang					
R.Q.D. enclosed					
" overhang					
Bridge enclosed	63.47	63.47	7.0	-	63.47
" overhang aft	.78	.59		-	.59
" overhang forward	1.50	.75		-	.75
F'cle enclosed	26.00	26.00		-	26.00
" overhang					
Trunk aft					
" forward					
Tonnage opening aft					
" " forward					
Total	115.25	114.31			114.31

Standard Height of Superstructure 6.04', R.Q.D. , Deduction for complete superstructure 31.375", Percentage covered S/L = 45.42, S1/L = 45.05, E/L = , Percentage from Table, Line A. TANKER 36.05 (corrected for absence of forecastle (if required)) , Percentage from Table, Line B. (corrected for absence of forecastle (if required)) , Interpolation for bridge less than .2L (if required) , Deduction = 31.375 x .3605 = -11.31'.

SHEER CORRECTION.

Station	Standard Ordinate	S M	Product	Actual Ordinate	Effective Ordinate	S M	Product
A.P.	35.37	1	35.37	46.00	46.00	1	46.00
1/4 L from A.P.	15.74	4	62.96	18.17	18.17	4	72.68
3/4 L "	3.89	2	7.78	4.54	4.54	2	9.08
Amidships	-	4	-	-	-	4	-
3/4 L from F.P.	7.78	2	15.56	8.98	8.98	2	17.96
1/4 L "	31.48	4	125.92	35.94	35.94	4	143.76
F.P.	70.75	1	70.75	82.50	82.50	1	82.50
Total			318.35				371.98

Mean actual sheer aft, Mean standard sheer aft = , Mean actual sheer forward, Mean standard sheer forward = , Length of enclosed superstructure forward of amidships = , aft of = , Correction = Difference between sums of products / 18 = 53.63 (75 - 2271) / 18 = -1.56', If limited to maximum allowance of 1 1/2 ins. per 100 ft.

Deduction for Tropical Freeboard. Addition for Winter and Winter North Atlantic Freeboard. Depth to Freeboard Deck = 20.54, Summer freeboard = 2.34, Moulded draught (d) = 18.20, Deduction for Tropical freeboard and addition for Winter freeboard = d/4 inches = 4.55 = 116/-, Addition for Winter North Atlantic Freeboard (if required) = 4.55 + 2.54 + 7.09 = 141.18/-.

Deduction for Fresh Water. Displacement in salt water at summer load water line, Tons per inch immersion at summer load water line, Deduction = Delta / 40 T inches = 120.0/-.

TABULAR FREEBOARD corrected for Flush Deck (if required) 32.17, Correction for coefficient 753 + 68 / 1.36 = 1.433 / .36 = 33.89.

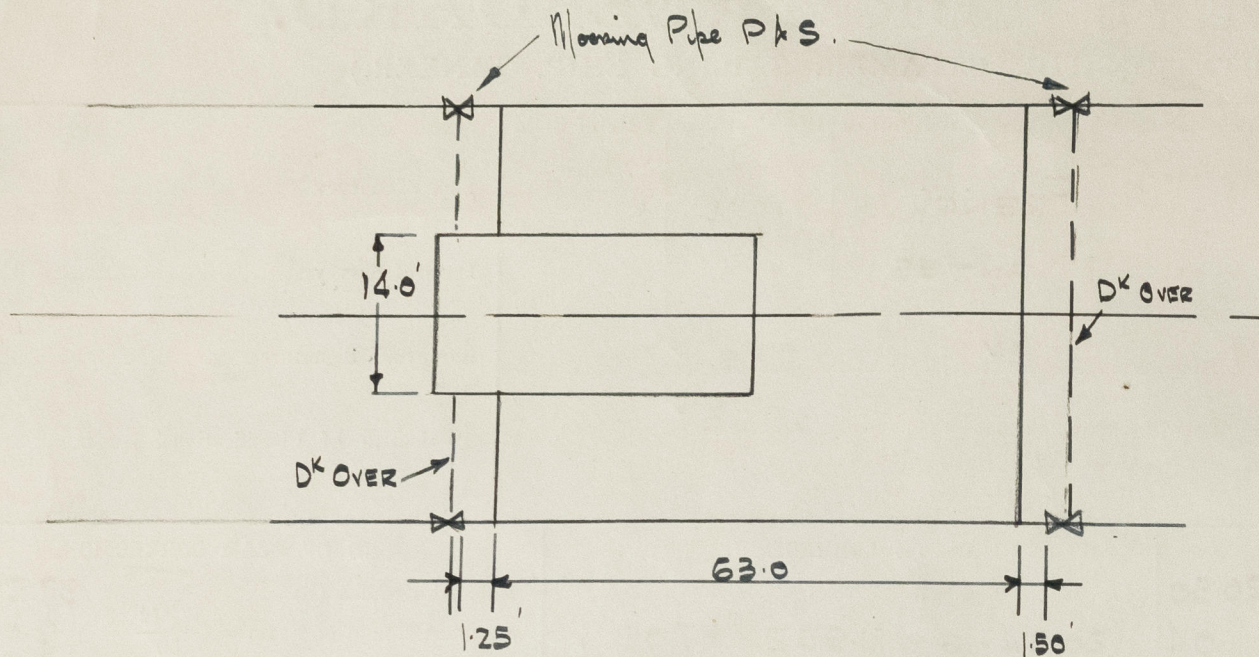
	+	-
Depth Correction	7.09	-
Deduction for superstructures	-	11.31
Sheer correction	-	1.56
Round of Beam correction	-	.07
Correction for Thickness of Deck amidships	-	-
Other corrections, scantlings, etc.	-	-
Summer Freeboard	7.09	2.94

Summer Freeboard = 28.04'.

SUMMER FREEBOARD amidships from Centre of Disc to top of Deck Line, Wood, Steel, Deck :-

Tropical Fresh Water Line above Centre of Disc	236	Tropical Fresh Water Freeboard	476
Fresh Water Line	120	Fresh Water	92
Tropical Line	116	Tropical	96
Winter Line below	116	Winter	28
Winter North Atlantic Line	180	Winter North Atlantic	92

A new form should be prepared if any alterations that affect the freeboard have been made. If no such alterations have been made, the Surveyor should endorse the form on this side with his signature and the date.



$$\begin{aligned}
 \text{Length of Bridge} &= 63.00 \\
 + 14 \times 1.25 &= 17.5 \\
 \hline
 &= 80.50 \\
 &= 80.50' = \text{Equip Encl.}
 \end{aligned}$$

$$\begin{aligned}
 \text{O/H aft} &= 1.25 \\
 &= .47 \\
 &= .78 \\
 \text{O/H Fwd} &= 1.50
 \end{aligned}$$

BOARD REPORT

the
the
the
the
the

the
the
the
the
the

Trade of ship _____

Names of sister ships _____

Builder's name and yard number _____

Owners _____

Fee £ _____



© 2020

Lloyd's Register
Foundation