



M/S 'OTTAWA'

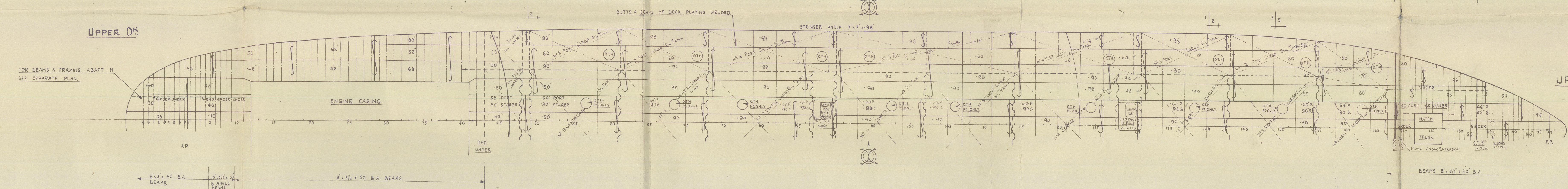
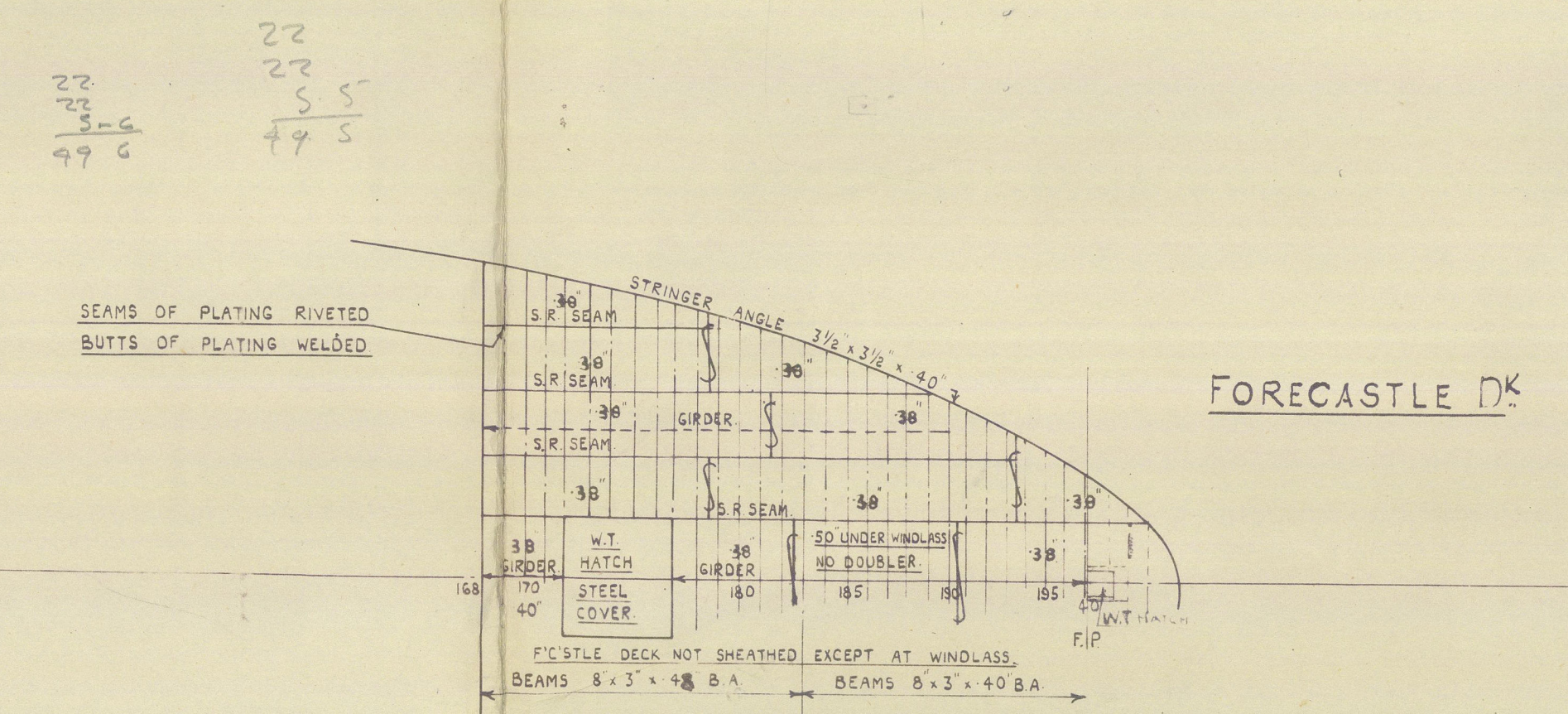
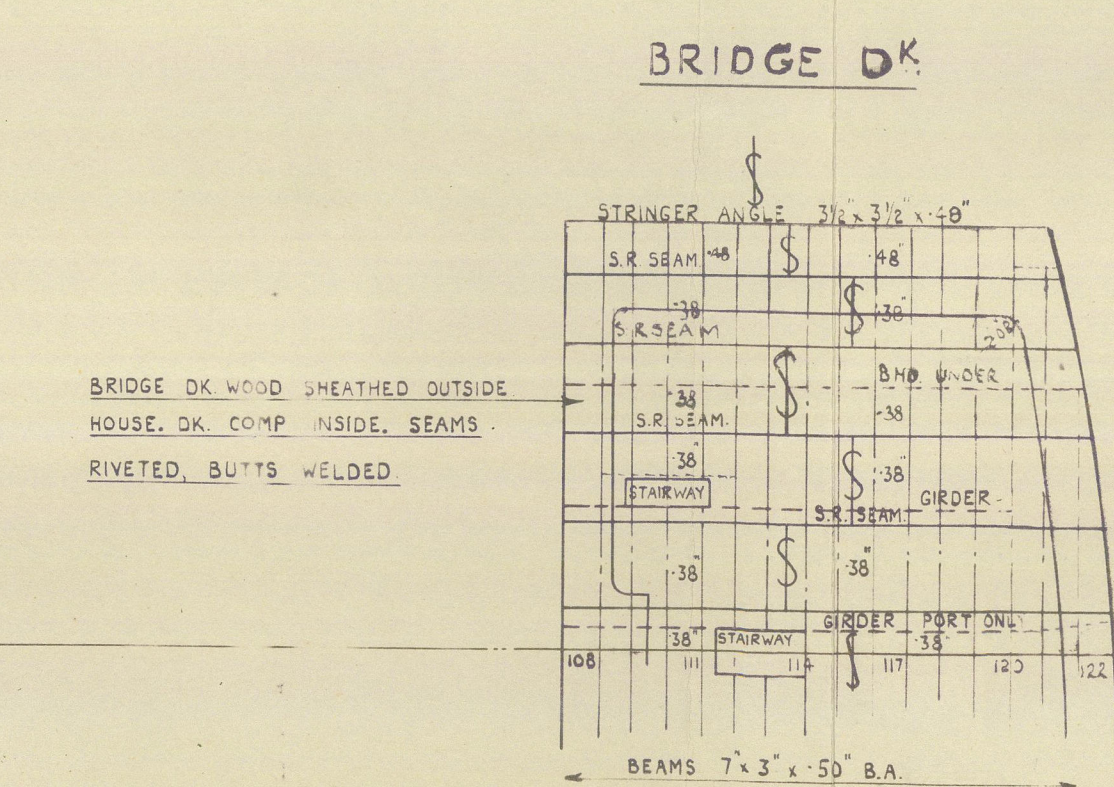
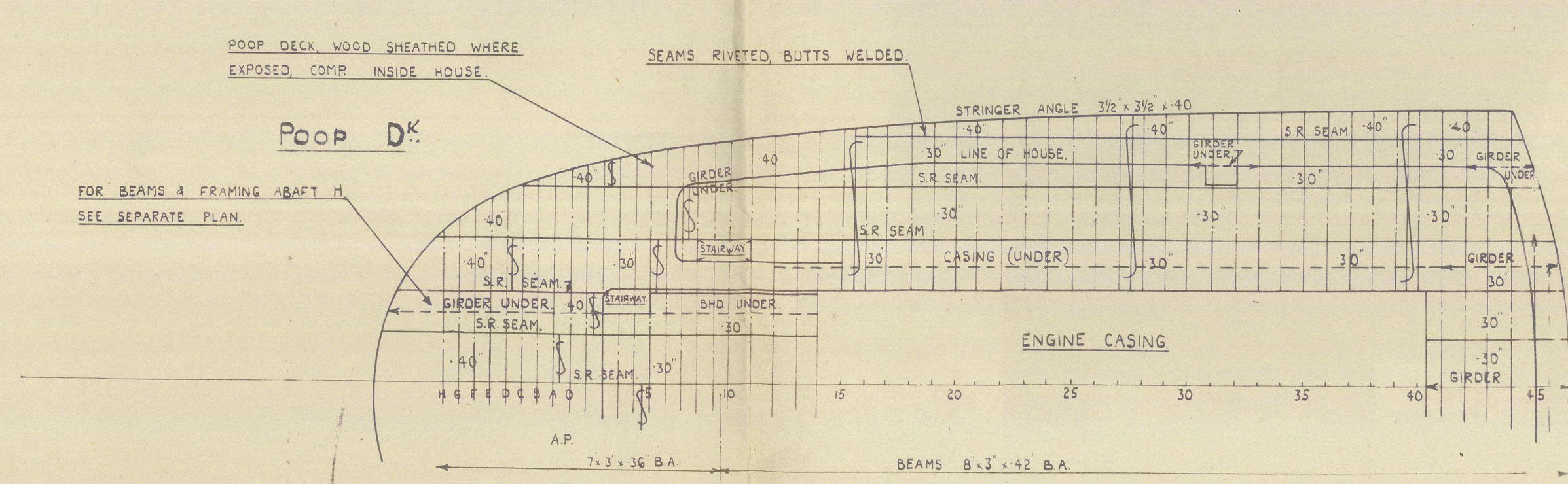
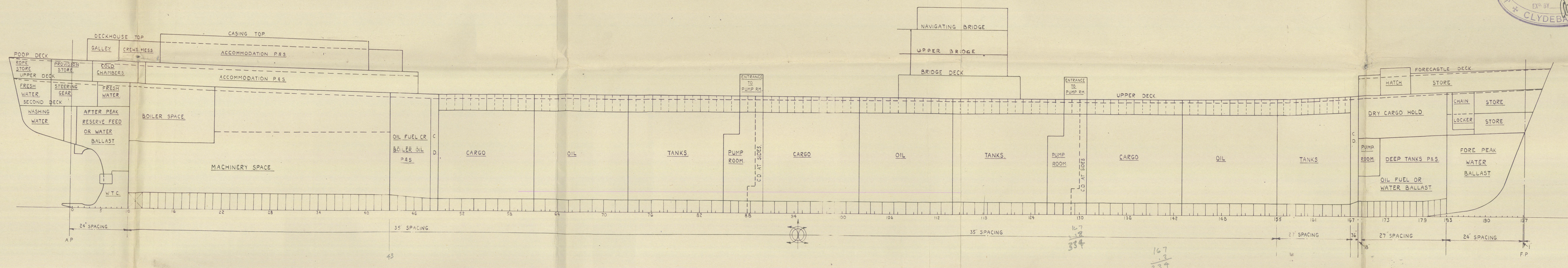
NOS 654-6

# PROFILE & DECK PLANS.

SCALE: 1/16" = 1 FOOT.

DIMENSIONS: 535'-6" B.P. x 72'-0" MLD. x 41'-0" MLD. TO UPPER DECK.

CLASS LLOYDS 100 A1 "CARRYING PETROLEUM IN BULK"  
LLOYDS NUMERALS  
L = 535'-6" B (EQUIVALENT) = 70.5 D (EQUIVALENT) = 39.70  
L x D = 535' x 39.70 = 21269  
L x (B+D) = 535' x (70.5 + 39.70) = 59012



SHIPYARD DRAWING OFFICE  
CLYDEBANK  
SENT TO: LATE  
M<sup>rs</sup> MOELLER 30.9.40 B92111  
Gardner 22.3.41 B.71865



Kipawa.

GLASGOW REPORT No. 77444

N/N Monterey \*  
" OTTAWA \*  
★

Profile & decks (as built)

N/N  
Monterey

RECORDS DEPT.:

DON

2



© 2021

Lloyd's Register  
Foundation

003687-003697-0125