

No 496. MIDSHIP SECTION

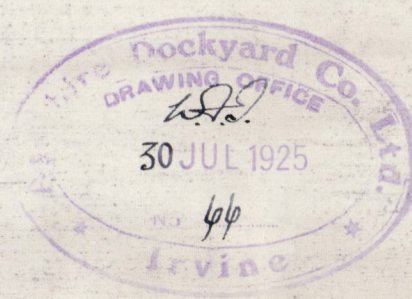
DIMS. 340'-0" BP x 48'-6" x 25'-3" M/L

SCALE 2" = 1 FOOT.

TO CLASS B.S. *

measured on ship.

Brit. Corp.



340 x 48-6 x 25-3 x 75

= 3123 ✓

Erection
Houses

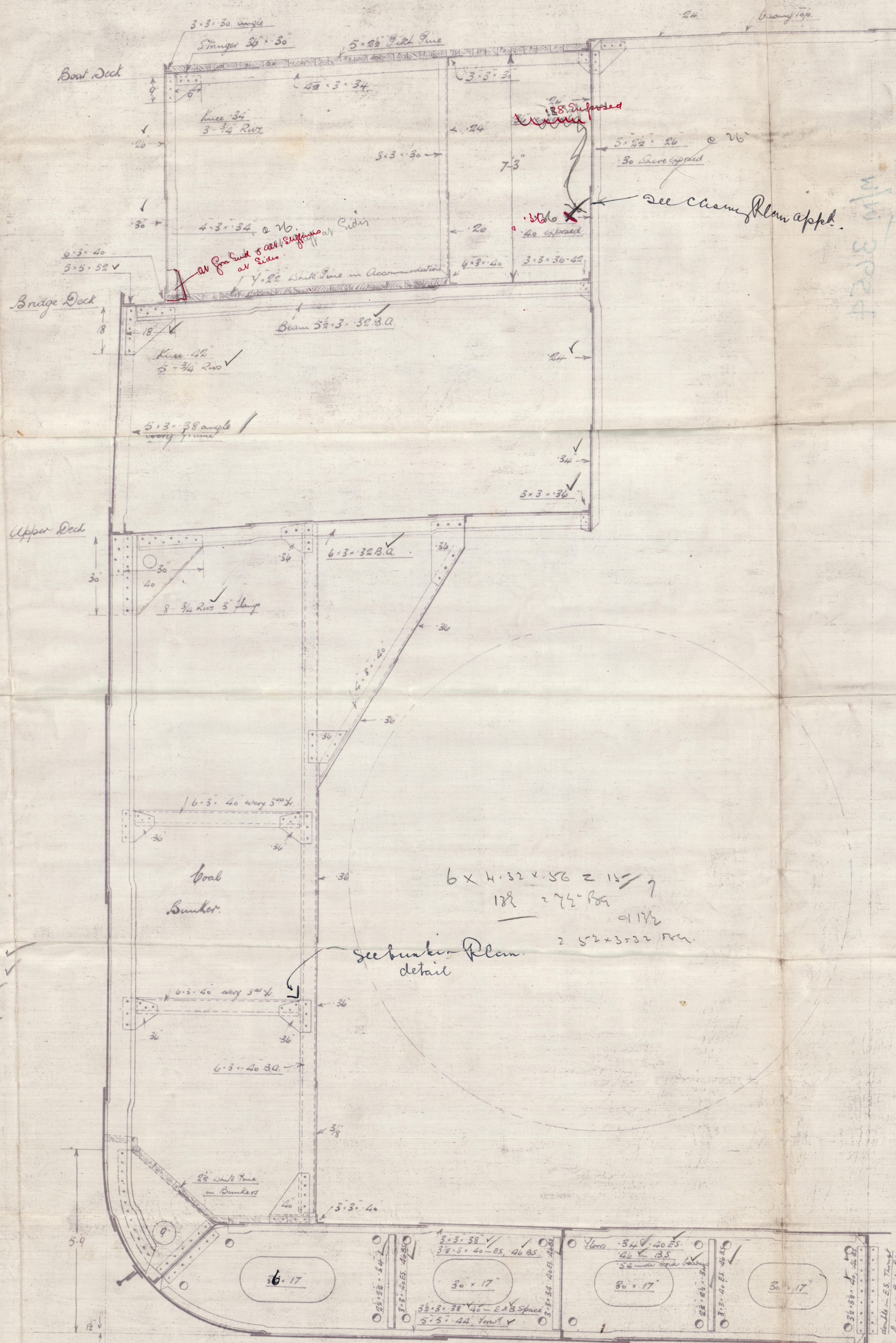
= 315 ✓
= 105 ✓

3543. K. unmet. ✓

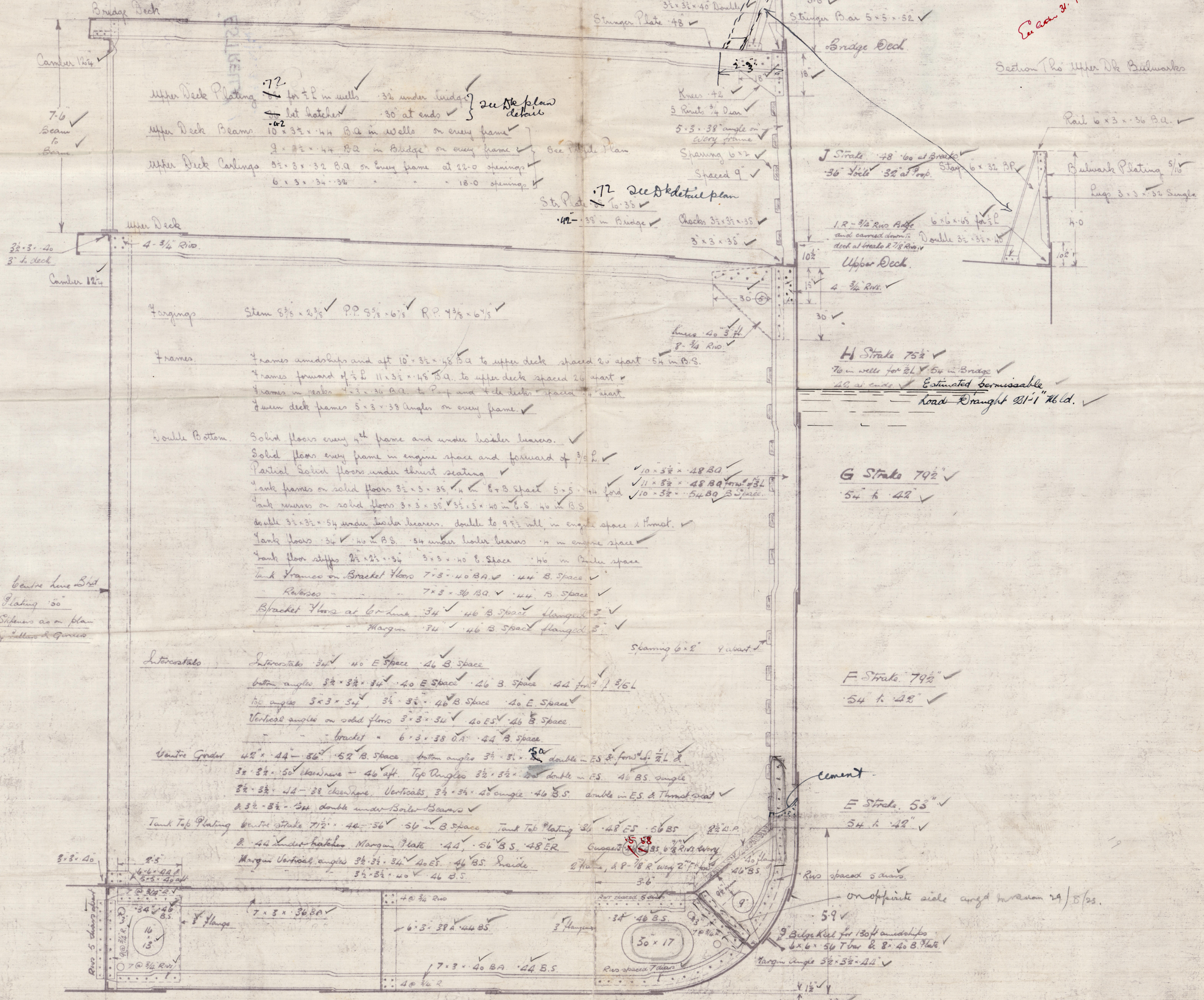
- 2 Bower Anchors Stockless Byers Patent 50 cwt ✓
- 1 Bower Anchor Stockless Byers Patent 48 1/2 cwt ✓
- 1 Stream Anchor Common 15 cwt ✓
- 9 1/2 Fathoms 4" clear Stud Link Chain Cable ✓
- 90 Fathoms 4 1/2" Stream wire ✓
- 140 Fathoms 4 1/2" steel wire towline ✓
- 1 @ 90 Fathoms 8 1/2" wire hawser ✓
- 1 @ 90 Fathoms V Manilla hawser ✓
- 8 @ 140 Fathoms 3" Manilla hawser ✓
- 9 @ 140 Fathoms 8 1/2" Manilla hawser ✓

Riveting Notes.

- Butts of flat keel plates Strapped & treble riveted throughout 3/4" x 1/2" round mandible ✓
- Butts of keel plates overlapped & treble riveted to double 3/4" x 1/2" round mandible ✓
- Tank top centre - double riveted to single 3/4" x 1/2" round mandible ✓
- Tank top plating - double riveted to single 3/4" x 1/2" round mandible ✓
- Margin plate - double riveted throughout 3/4" x 1/2" round mandible ✓
- Seams of tank top centre strake double riveted within 24" of remainder single ✓
- Plating & Margin single riveted throughout ✓
- Butts of shell plating overlapped & treble riveted to double ✓
- Shovestrake in way of Breaks Quadruple riveted ✓
- Butts of Shovestrake in way of Breaks ✓
- Bridge & clear of breaks } Treble riveted to double outside 3/4" x 1/2" ✓
- Butts of Bridge Deck Straps overlapped & treble riveted ✓
- Plating - double riveted ✓
- Upper 5" Stringer - Quad riveted to treble in way of wells ✓
- Butts of upper Deck Plating - Quad riveted to treble in way of wells ✓
- Seams of Bridge Deck - Single riveted ✓
- Seams of Upper Deck - Single riveted ✓
- Seams & Butts of Lower & Fore Decks - Single riveted ✓



- Bridge Deck Plating 3/8" sheet sheathing 3/8" where sheathed ✓
- Bridge Deck Beams 6" x 6" x 40 B.A. On every frame ✓
- Bridge Deck Carlings 5" x 3" x 32 B.A. On every frame ✓
- Fore Deck Beams 6" x 3" x 40 B.A. On alternate frames ✓
- Fore Deck Carlings 5" x 3" x 32 B.A. On every frame ✓
- Fore Deck Plating 3/8" to 3/4" ✓
- Fore Deck Beams 7" x 3" x 40 B.A. On alternate frames ✓
- Fore Deck Carlings 5" x 3" x 32 B.A. On every frame ✓
- Fore Deck Plating 3/8" to 3/4" ✓



- Keel 5 1/2" x 70-60 ✓
- A Strake 75 1/2" ✓
- B Strake 75 1/2" ✓
- C Strake 75 1/2" ✓
- D Strake 79 1/2" ✓
- E Strake 65" ✓
- F Strake 79 1/2" ✓
- G Strake 79 1/2" ✓
- H Strake 75 1/2" ✓
- I Strake 75 1/2" ✓
- J Strake 75 1/2" ✓
- K Strake 75 1/2" ✓
- L Strake 75 1/2" ✓
- M Strake 75 1/2" ✓
- N Strake 75 1/2" ✓
- O Strake 75 1/2" ✓
- P Strake 75 1/2" ✓
- Q Strake 75 1/2" ✓
- R Strake 75 1/2" ✓
- S Strake 75 1/2" ✓
- T Strake 75 1/2" ✓
- U Strake 75 1/2" ✓
- V Strake 75 1/2" ✓
- W Strake 75 1/2" ✓
- X Strake 75 1/2" ✓
- Y Strake 75 1/2" ✓
- Z Strake 75 1/2" ✓

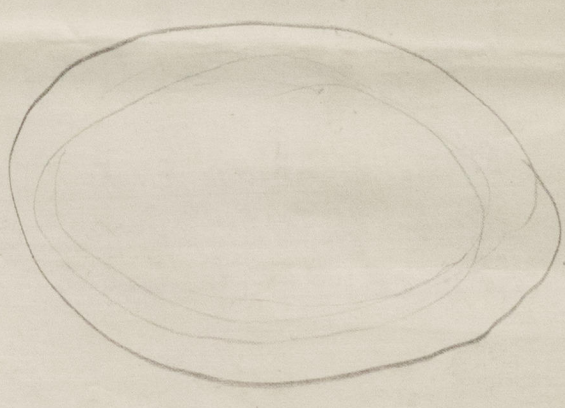
and
all
31 JULY 1925
Approved
E. A. 2-1-25

2 Bulwarks

36 B.A. ✓

Plating 5/16

3 x 32 Single



© 2020

Lloyd's Register
Foundation

003649-003658-0140

003649-003658-0140

Brit. corp.
M/M 3654

3

N^o 496

Midship Section

PLANS TRANSFERRED
TO SISTER VESSEL

Haig Hali Kalkavan

N^o 'ESTRELLA' ✓
M/M. 3654

AYRSHIRE DYARD COY.

496

Midship Section

31.4.25

BARON HAIG

20913
LR

Lloyd's Register
Foundation

003649-003658-0140