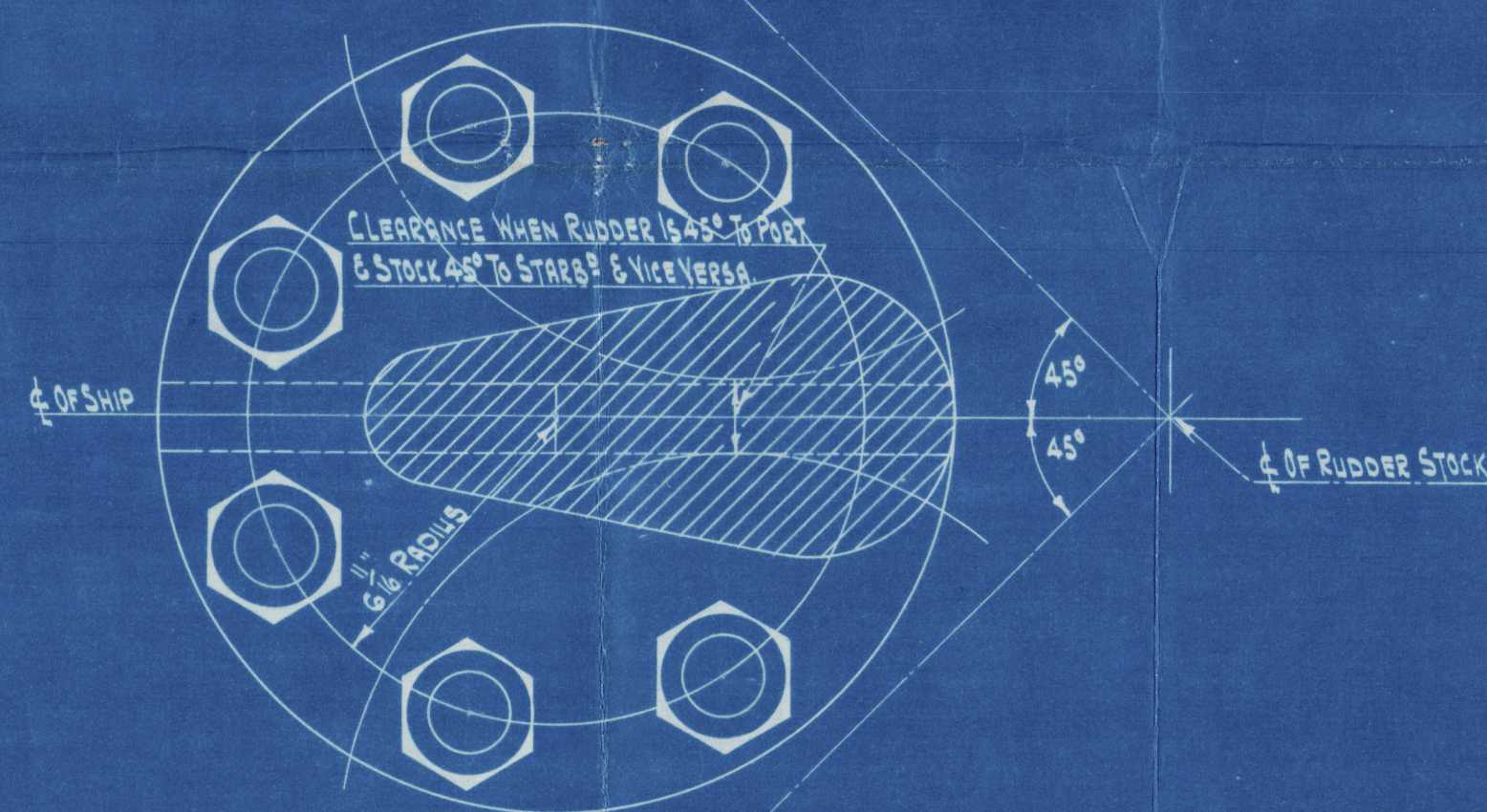


T. S. S. No. 146.
RUDDER & STERNFRAME.
SCALE: - 1/2" = 1 FOOT.

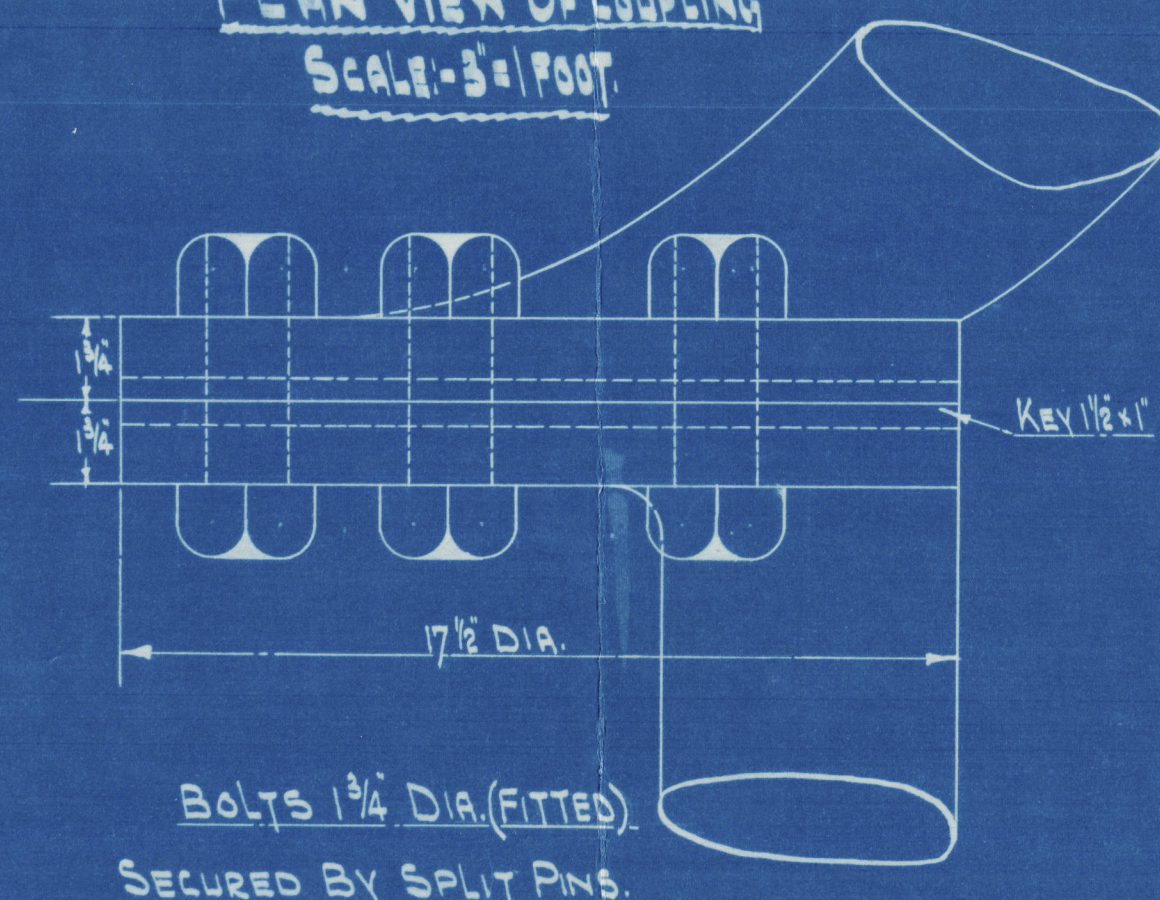
A = 590
A x D = 149.
SPEED = 13 KNOTS.

RIVETS IN RUDDER ARMS, 1/8" DIA. SPACED 4 1/2 DIAS. APART (REELED)
" " STERN POST 1" DIA. SPACED 5 DIAS. APART (REELED) *in each row*

NO STOPPER FITTED TO RUDDER OR STERN POST.

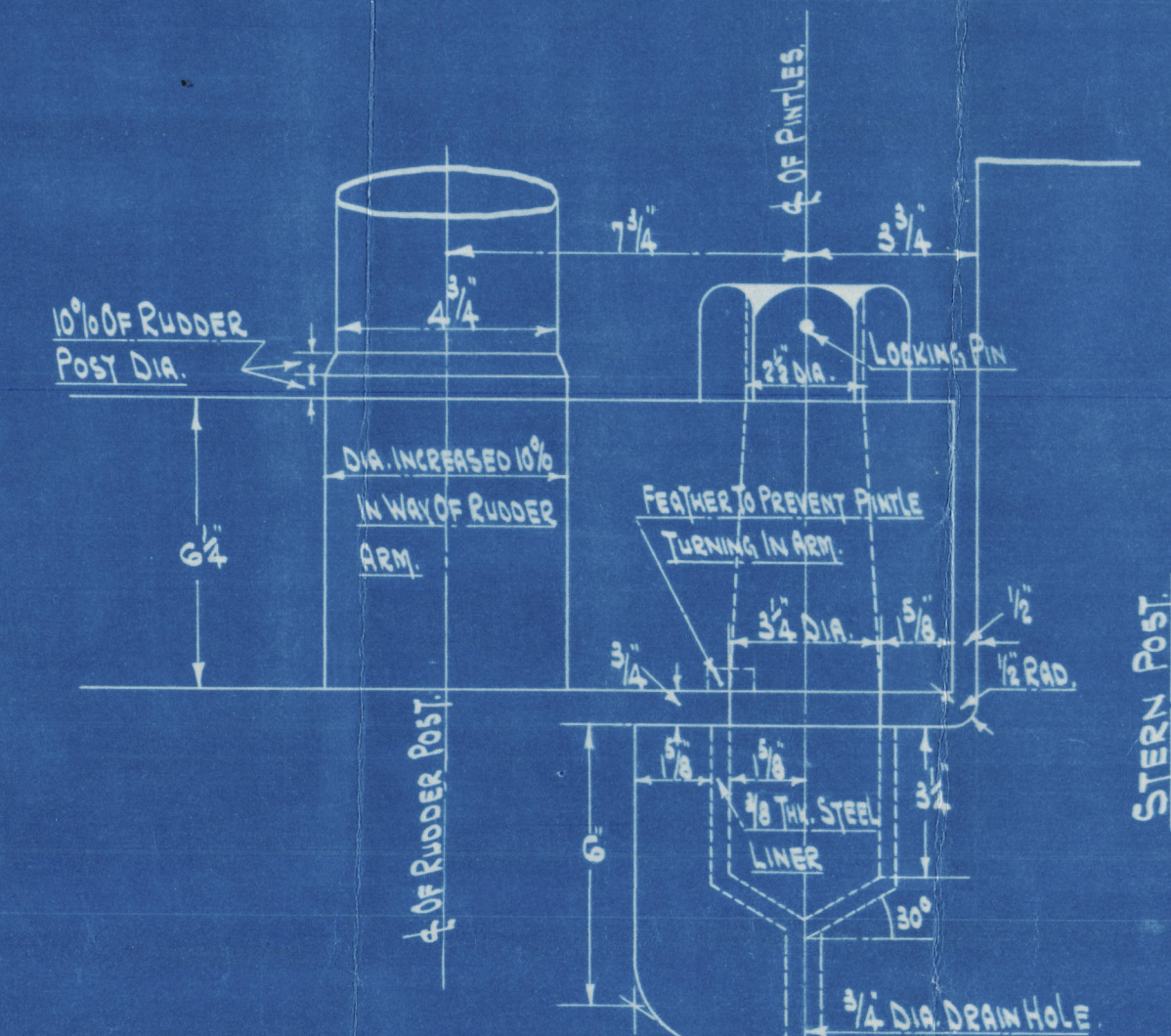


PLAN VIEW OF COUPLING
SCALE: - 3" = 1 FOOT.

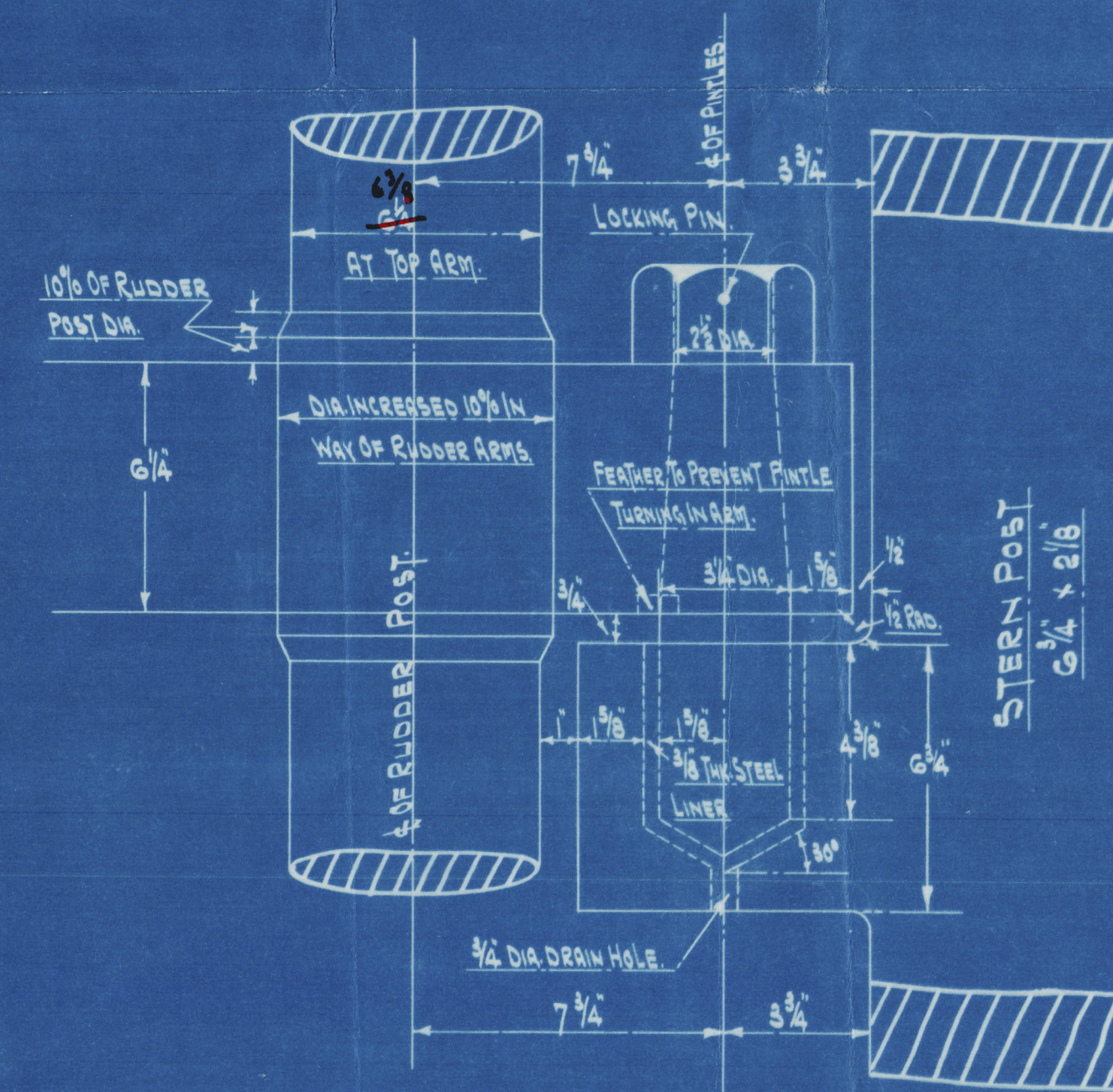


BOLTS 1 3/4 DIA. (FITTED)
SECURED BY SPLIT PINS.

ELEVATION OF COUPLING
SCALE: - 3" = 1 FOOT



DETAIL OF BOTTOM GUDGEON & PINTLE
SCALE: - 3" = 1 FOOT.



DETAIL OF GUDGEON & PINTLE.
SCALE: - 3" = 1 FOOT.

146

STERN FRAME
6

BRIDDER

(3)

w/w 'Lairdsdale'

ss S2120"

146

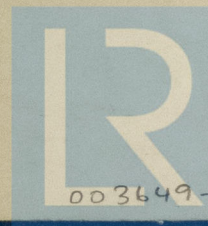
STERN FRAME
6

BRIDDER

(3)

ss S2120"

LAIRDSDALE



© 2020

Lloyd's Register
Foundation

003649-003658-0098