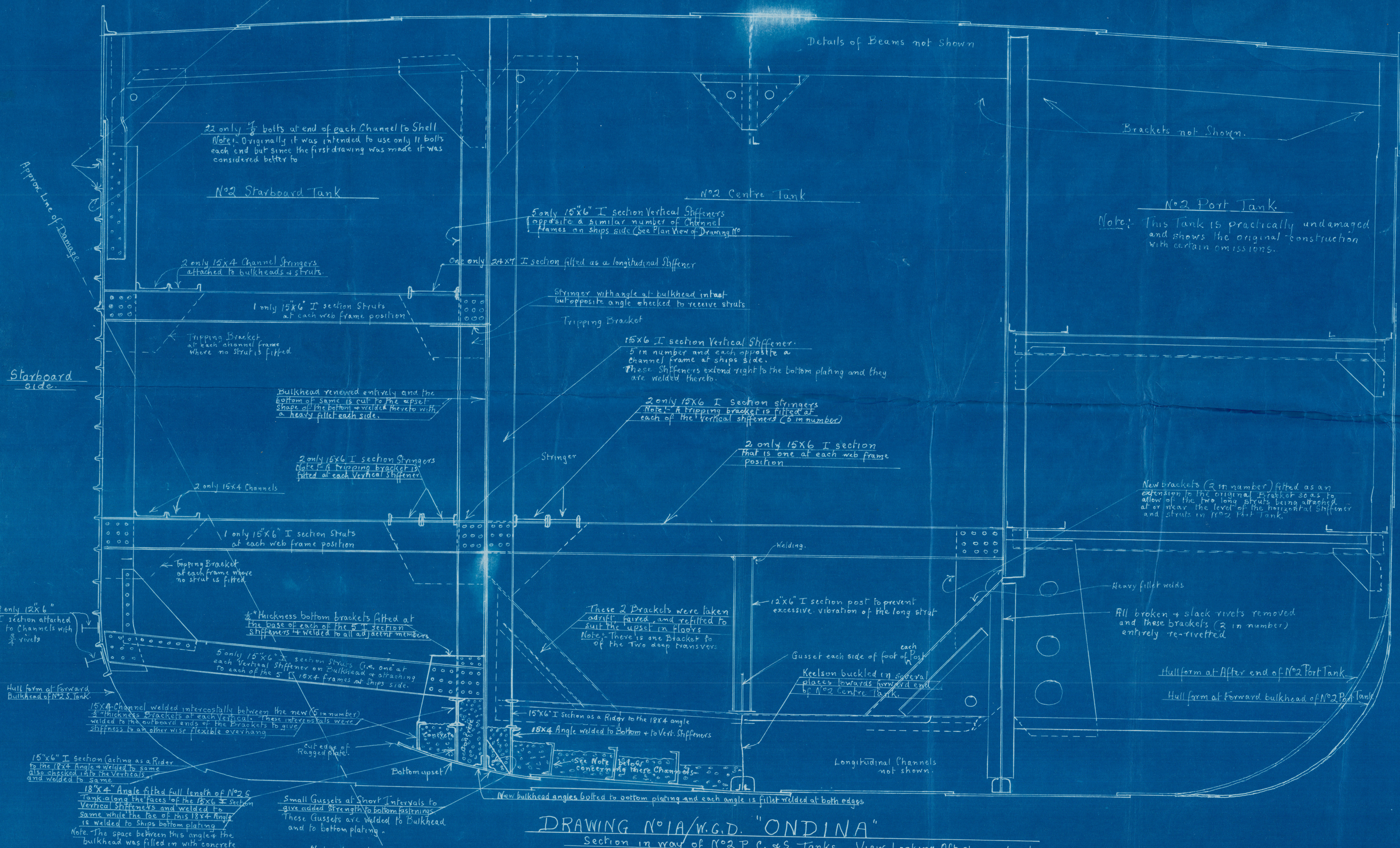


all
bolts in flanges of horizontal channels to be
12" pitch closed to 6" pitch at overlap each end on Shell.
Special Note: - In order to relieve the after end bolts
attaching the after end of the horizontals to the shell,
the ends of each Channel above water were heavily
welded to each other and to the Shell plating.



DRAWING NO. 1A/W.G.D. "ONDINA"

Section in way of No. 2 P.C. & S. Tanks. View Looking Aft showing Location of Damage and the method of Repair which was eventually carried out at FREMANTLE.
Scale 1/5. Note: All bolt fastenings are 1/2" bolts in 1/8" Holes.
The Drawing shows diagrammatically the approximate amount of set up in the bottom in way of Longitudinal Bulkhead between No. 2 C & S. Tanks

Drawing by W. J. Davies SURVEYOR to LLOYD'S REGISTER OF SHIPPING.

WELLS LIMITED,
PLAN PRINTERS
728 HAY ST. PERTH

003631-003639-0134



© 2020

Lloyd's Register
Foundation