

13/1/56.

# PROPOSED No 5326 B.

# STERNPOST & RUDDER.

SCALE  $\frac{3}{4}"$  &  $3" = 1'$

STERNPOST OF ANNEALED CAST STEEL

RUDDER STOCK OF WROUGHT STEEL

RUDDER ARMS AND MAIN PIECE OF WROUGHT OPEN HEARTH MILD STEEL

SHRUNK ON AND KEYPED TO MAIN PIECE

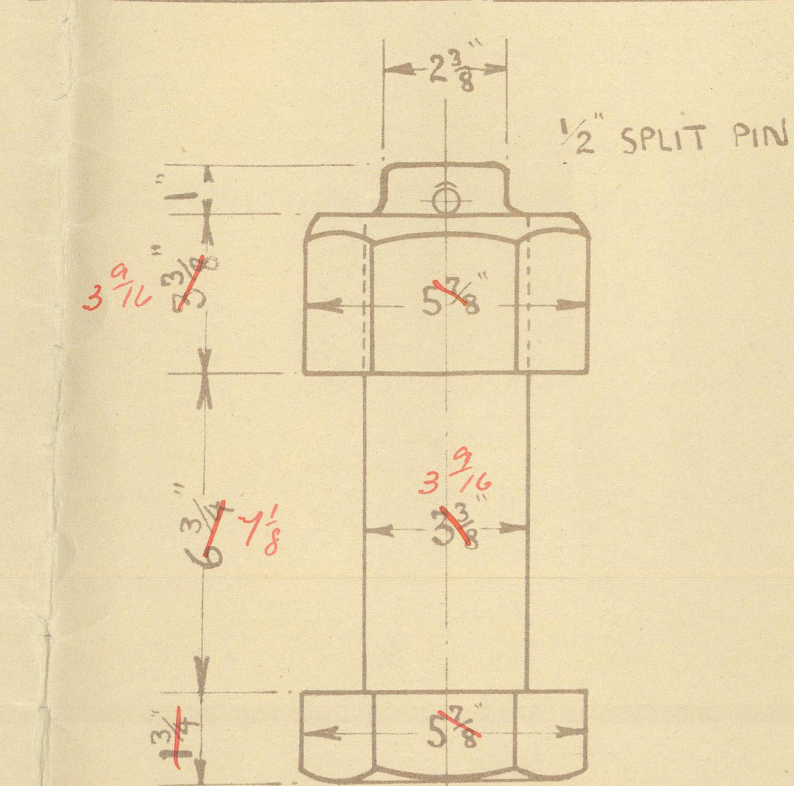
STEEL PINTLES WITH METAL BUSHES FITTED COMPLETE AS SHOWN

RISET HOLES TO BE CAREFULLY MARKED AND BORED SPACING AND

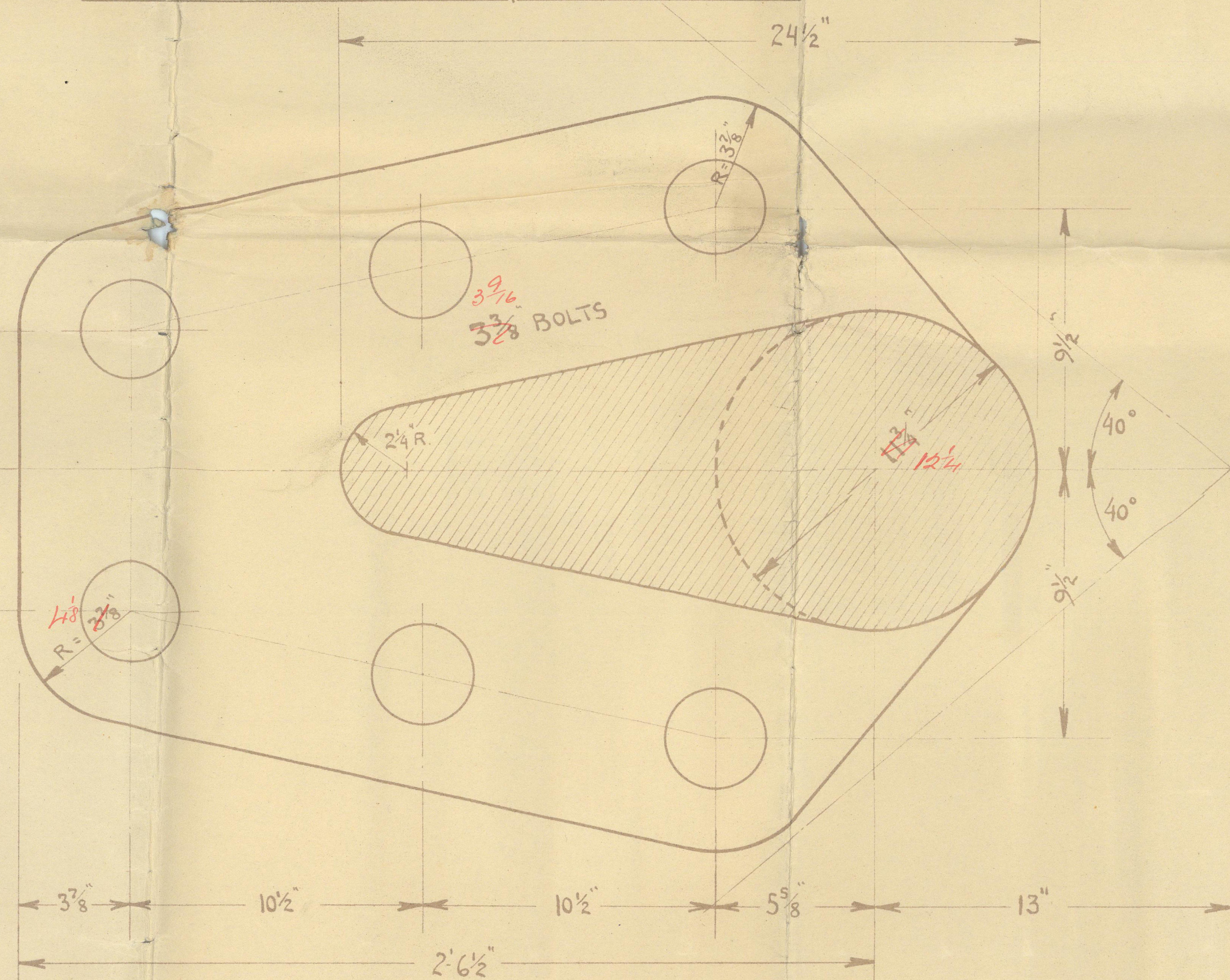
DIAMETER TO THIS PLAN.

ROOM FOR STEERING GEAR

DETAIL OF COUPLING BOLTS. SCALE  $3" = 1'$  FOOT



DETAIL OF RUDDER COUPLING. SCALE  $3" = 1'$  FOOT



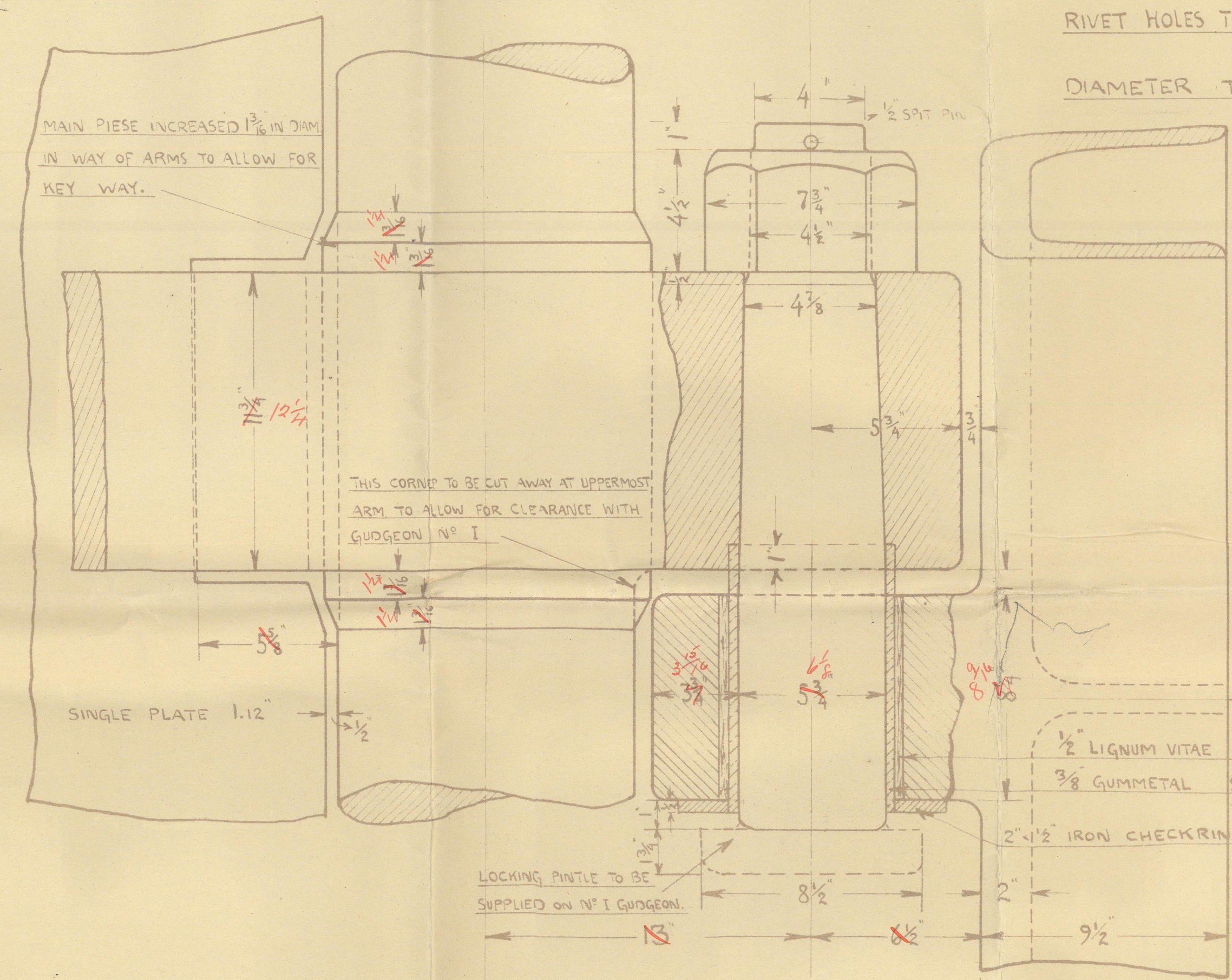
STUFFING BOX UPPER DECK

Stuffing box to be substituted

RUDDER STOCK 11/4" TO RULE  
+ 10" FOR TANKER - 11/4" 10/4"

DETAIL OF STEEL PINTLES FITTED COMPLETE

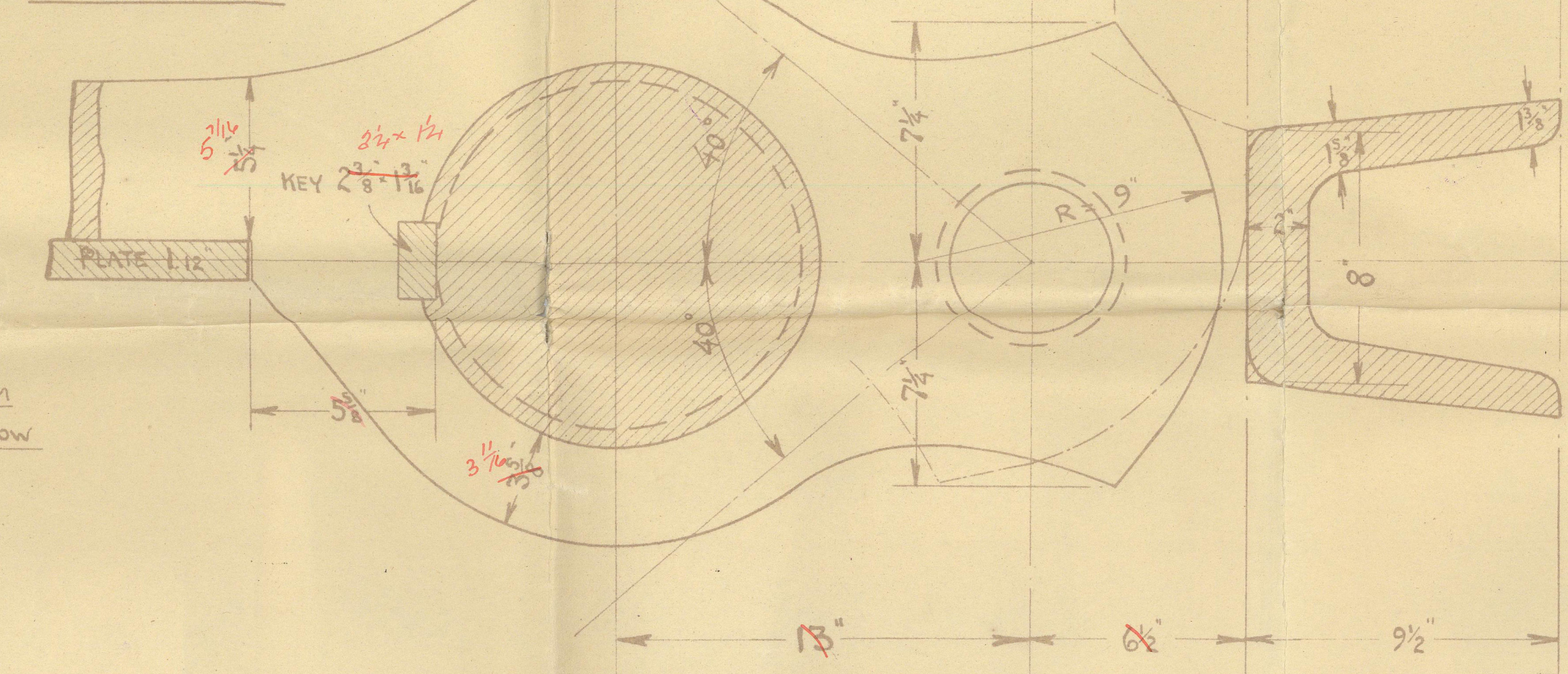
SCALE  $3" = 1'$  FOOT



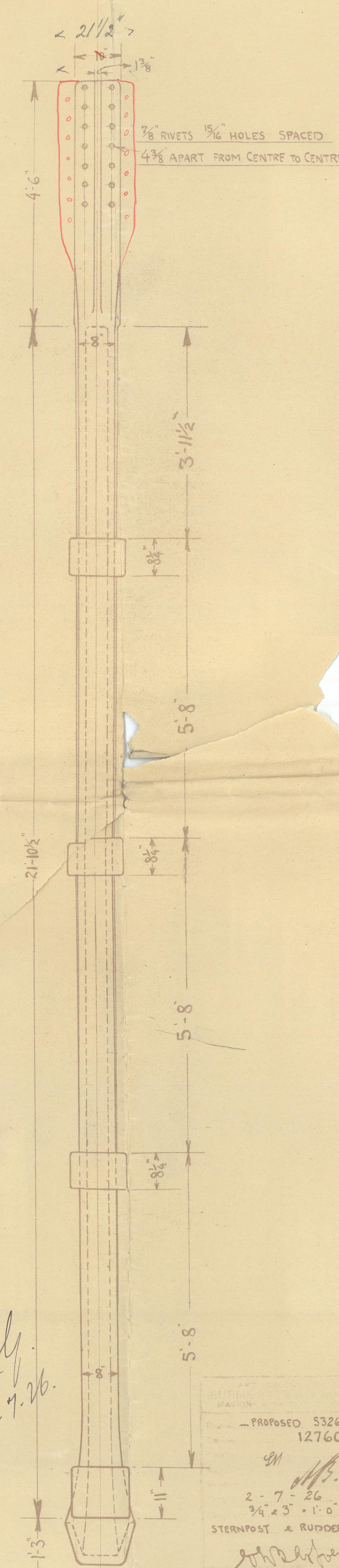
DETAIL OF RUDDER STOPPER

ON GUDGEON No 2

SCALE  $3" = 1'$  FOOT



STERNPOST LOOKING FORWARD



LOOSE ARMS OF WROUGHT OPEN  
HEARTH MILD STEEL TO BE KEYPED  
AND SHRUNK ON RUDDER STOCK

ARMS UNIFORMLY TAPERED FROM  
 $5\frac{1}{4}"$  AT RUDDERSTOCK  $1\frac{1}{8}"$

SPEED OF VESSEL 11 KNOTS  
RUDDER AREA = 144 SQ FEET  
CTR OF GRAVITY ABAFT  $\frac{1}{2}$  OF PINTLES = 4.32  
A = D = 621



5 7/16  
3  
Bernister & Wain  
Copenhagen,

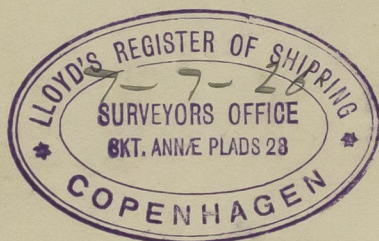
Design No 5326B.

(No. ~~347~~ 348).

M/S. "CHRISTIAN" of Copenhagen

Turnpost & Rudder.

Copenhagen  
Report No 7549.  
15-9-1927.



Yard No. 354.

m/s "Sir Osborn Holmsten"

Eng. Rpt. No. 7731.

OOT

24

003625-003630-0044



© 2020

Lloyd's Register  
Foundation