

Lloyd's Register of Shipping.  
SURVEYS FOR FREEBOARD.  
(CONDITIONS OF ASSIGNMENT.)

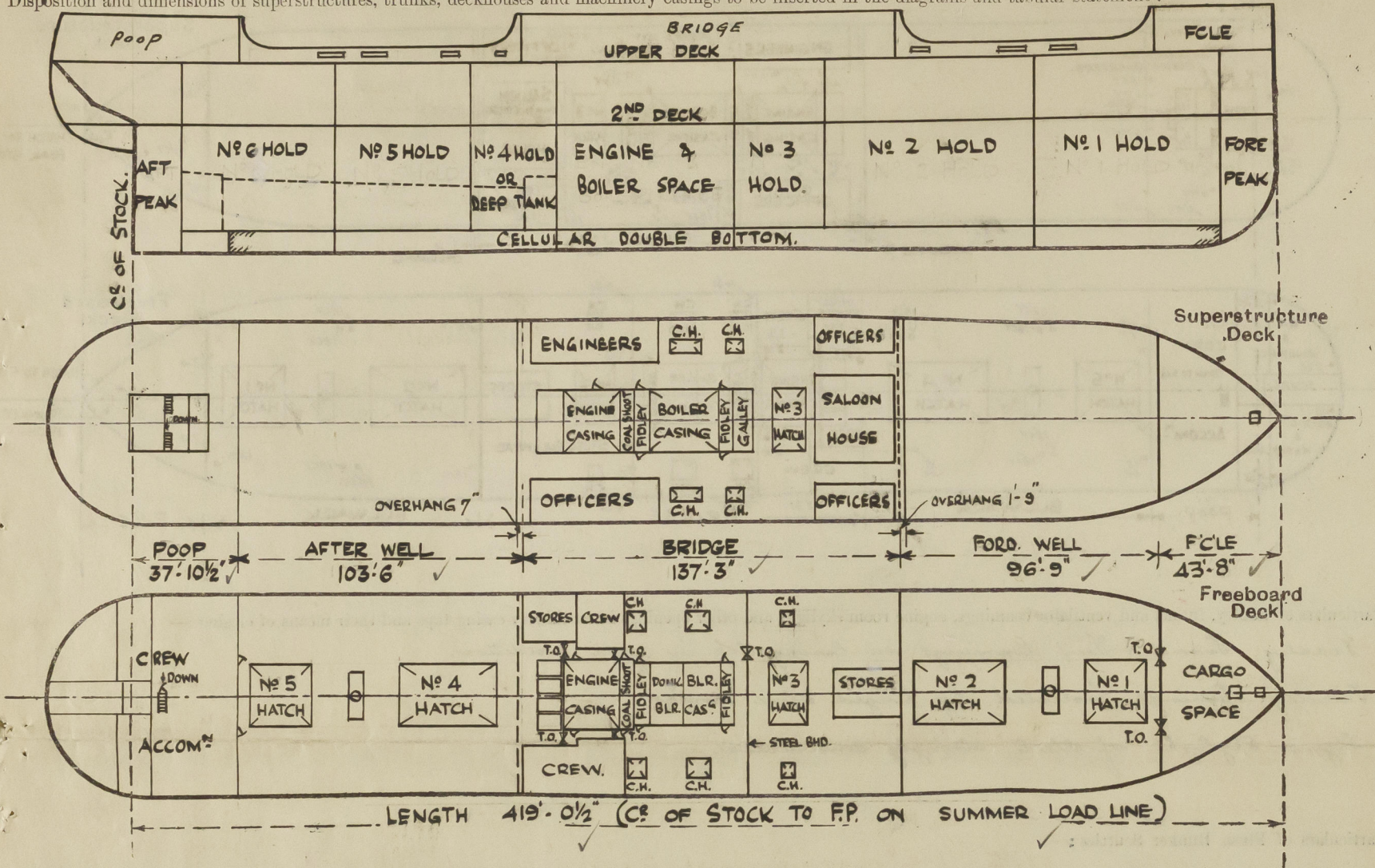
Index No.  
(For London Office only).

B.T. COPY.

Ship's Name **"TRADER"**  
Official Number **166310.**  
Nationality and Port of Registry **BRITISH - LIVERPOOL.**

Port of Survey **GLASGOW**  
Surveyor's Signature **R. Dunsmuir**  
Date of Survey **Whilst building**

Disposition and dimensions of superstructures, trunks, deckhouses and machinery casings to be inserted in the diagrams and tabular statement:—



Particulars of Superstructures, Trunks, Casings, Deckhouses.

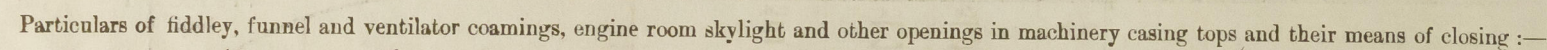
	Coaming	Plating	Stiffeners	Spacing	End Attachments of Stiffeners	Size of Openings	Height of Sills	Height of Casings
Poop Bulkhead ...	38	PLATING	ANGLE 6 x 3 x 46	28"	LUGGED T & B	1 P & S 5'-0" x 2'-0"	18"	7'-11 1/2"
Raised Quarter Deck Bulkhead ...	30	PLATING	ANG. 4 x 3 x 30	30"	NONE	T.O. 5'-6" x 3'-0"	18"	7'-11 1/2"
Bridge, After Bulkhead ...	32	PLATING	FLANGED 4" B. 4	36"	NONE	NONE	✓	7'-11 1/2"
Bridge, Forward Bulkhead ...	44	PLATING	10 x 3 1/2 x 40	30"	LUGGED T & B.	NONE	✓	7'-11 1/2"
Forecastle Bulkhead ...	30	PLATING	ANGLE 4 x 3 x 32	28"	NONE	1 P & S 6'-0" x 4'-0"	12"	7'-11 1/2"
Trunk, Aft ...								
Trunk, Forward ...								
Exposed Machinery Casings on Freeboard or Raised Quarter Decks ...								
Exposed Machinery Casings on Superstructure Decks ...	36 x 34	30	ANG 3 x 3 x 32	27" & 31"	BRACKETS AT TOP	4'-9" x 2'-6"	18"	7'-9"
Machinery Casings within Superstructures not fitted with Class I Closing Appliances ...	30	PLATING	ANGLE 5 x 3 x 5 1/6	54"	BRACKETS AT TOP	4'-9" x 2'-6"	18"	7'-11 1/2"
Deckhouses on Flush Deck Ships ...								

Particulars of Closing Appliances (state if capable of being manipulated from both sides).

Poop Bulkhead ...	Hinged steel doors. Operated from both sides. ✓
Raised Quarter Deck Bulkhead ...	3" Sliding boards full height of the Deck, fitted in channel riveted to casing & Side Houses. ✓
Bridge, After Bulkhead ...	3" Sliding boards full height of opening, fitted in channel riveted to casing & Side Houses. ✓
Bridge, Forward Bulkhead ...	No openings. ✓
Forecastle Bulkhead ...	3" Sliding boards full height of opening, fitted in channels riveted to bulkhead. also deck bolted plate. ✓
Exposed Machinery Casings on Freeboard or Raised Quarter Decks ...	
Exposed Machinery Casings on Superstructure Decks ...	Hinged steel doors. Operated from both sides. ✓
Machinery Casings within Superstructures not fitted with Class I Closing Appliances ...	Hinged steel doors. Operated from both sides. ✓
Deckhouses on Flush Deck Ships ...	



The following diagrams should be used to indicate the positions of cargo and coaling hatchways, gangway, cargo and coaling ports, ventilators, companionways, etc., which would affect the seaworthiness of the ship:—



Fiddley, Tunnel & Vent boamings on casing top in good condition.

Fiddley openings protected by hinged steel covers.

Engine Skylight of Steel, strongly constructed.

Particulars of Flush Bunker Scuttles:—

Particulars of Companionways :— ENTRANCE TO CREWS QUARTERS IN STEEL HOUSE ON POOP DECK.

Hinged steel door 4'-9" x 2'-0" (P&S), operated from both sides  
Sill 18" above deck.

Particulars of Ventilators in exposed positions on freeboard and superstructure decks :—

FOGLE DW 1-22 C.V. beamings 36"x40"; 2-18 C.V.<sup>2</sup> beamings 36"x40"; 1-10 C.V. beaming 36"x32; 1-9 C.V. beaming 36"x32  
to holds & Green R<sup>ts</sup>.  
8-18 C.V.<sup>2</sup> beamings 48"x40 to holds & Green R<sup>ts</sup>. beamings fitted with stays. ✓  
WELL FORD 2-18 C.V.<sup>2</sup> (P&S) beamings 30"x40 abcast N<sup>34</sup>WCH & Bailey; 2-15 C.V.<sup>2</sup> (P&S) beamings 30"x36 abcast  
BRIDGE DW boiler beam; 1-20 Derrick Post Vent (P&S) 31-6"x44 plating, abcast Bailey. Efficiently stayed. ✓  
2-7 C.V.<sup>2</sup> (P&S) beamings 36"x30  
1-9 C.V. (S) beaming 30"x32 } In passage abcast Engine beam.  
1-6 Washroom Vent (P&S) beaming 8"x25 with screw down W.T. cover.  
WELL APT. 1-19 Derrick Post Vent (P&S). 33-0"x44 plating. Stayed at Bridge R<sup>ts</sup> & at Boat Deck.  
9-18 C.V.<sup>2</sup> beamings 48"x40 to holds & Green R<sup>ts</sup>; 2-15 C.V.<sup>2</sup> beamings 48"x36; 1-12 C.V. beaming 48"x34  
to holds & Green R<sup>ts</sup>. All beamings fitted with stays.  
POOP DW 2-15 C.V.<sup>2</sup> beamings 18"x36 to Poop Space; 2-12 C.V.<sup>2</sup> beamings 18"x34 to Steering Gear; 1-12 C.V. to Poop Space, beaming 18"x34  
2-7 C.V.<sup>2</sup> beamings 18"x30 to workplaces; 12-6 Washroom Vents beamings 8"x25 with screw down W.T. covers.  
All beamings to Rule requirements & fitted with wood plugs & canvas covers. ✓

## Particulars of Air Pipes in exposed positions on freeboard, raised quarter, or superstructure decks:—

Fogle D<sup>h</sup> 1-2 1/4 M1 to Fore Peak - 15" High ; 1-2 1/4 M1 (Pass) to Double Bottom - 27" High.  
HELL FORW<sup>d</sup> 2-2 1/4 M1 (PAS) abreast East House - 36" High.  
BRIDGE D<sup>h</sup> 2-2 1/4 M1 (PAS) abreast Boiler Lasing - 32" High  
 2-2 1/4 M1 (PAS) in Passage at side of Engine Lasing - 32" High.  
HELL AFT. 1-2 1/4 M1 (PAS) abreast N<sup>o</sup> 4 Hatch. - 36" High  
 2-2 1/4 M1 (PAS) abreast East House. - 36" High.  
 1-2 1/4 M1 (P) abreast end of N<sup>o</sup> 5 Hatch - 36" High.  
 2-2 1/4 M1 (PAS) at side of Wing Houses at Bridge-end - 36" High  
POOP D<sup>h</sup> 1-2 1/4 M1 (P) to aft Peak Tank. - 24" High.

all air pipes closed by wood plugs.

## Particulars of Gangway Cargo and Coaling Ports:—

### Particulars of Scuppers and Sanitary Discharge Pipes :—

SANITARY DISCHARGES. from H.C.<sup>o</sup> Bath & Washbasins in Saloon House & Officers Accommodation (P&S) in Wing Houses abaft Engine casing, carried through Ships side above freeboard deck & fitted with 17.1. Storm Valves.  
Discharges from H.C.<sup>o</sup> Bath in Accommodation (P&S) abaft Engine casing in Bridge Space, carried through Ships side below freeboard deck & fitted with 17.1. Storm Valves.  
Discharges from H.C.<sup>o</sup> & blackplaces from Crew Quarters in Poop Space, carried through Ships side below freeboard deck, & fitted with 17.1. Storm Valves.

SCUPPERS.

2 - 2" Scupper in Post Space  
1 - 3" Scupper (P&S) in passage at end of Bridge.  
2 - 4" Scupper (P&S) in Bridge Space  
1 - 2" Scupper (S) from Bath in Side House  
1 - 2" Scupper (P) in Insulated Store with trap  
9 Sewer cap at inner end.

All coppers carried through Ship's Side below freeboard deck & fitted with M.I. Storm Valves.

## Particulars of Side Scuttles:—

Focle. 10" Diab Sidelights

BRIDGE 10" Deep Sidelights

Poop. 10" Dia<sup>r</sup> Sidelights

All sidelights of substantial construction & fitted with  
hinged deadlights.

\*Vertical distance of Sill of lowest Side Scuttle above top of keel *No sidelights below foreboard deck.*

## Particulars of Guard Rails :—

FOCLE. Open rails 3'-6" high with 4 rods & having stanchions about 5'-0" apart.

BRIDGE Steel Bulwark 4'-2'-6" x 3'-6" high. Open rail 3'-6" high with 4x6s between bulwarks  
absent N<sup>o</sup> 3 Hatch.

poop. Open rails 3'-6" high with 4 rods & Laving stanchions about 5'-0" apart.

## Particulars of Gangways, Lifelines, etc. :—

Arrangements provided for rigging lifelines.

State position of each freeing port ... .. { After Well:— 4'3"; 22'-0"; 49'-3"; 64'-6" FROM BRIDGE END. }  
(F. and A. position and height above deck edge) { Forward Well:— 6'-0"; 38'-6"; 57'-6" FROM BRIDGE FRONT. } 11" ABOVE DECK.

State whether the freeing ports are fitted with shutters, bars, or rails, and give particulars of such:— ✓

Additional area where sheer is less than standard.

0089 3

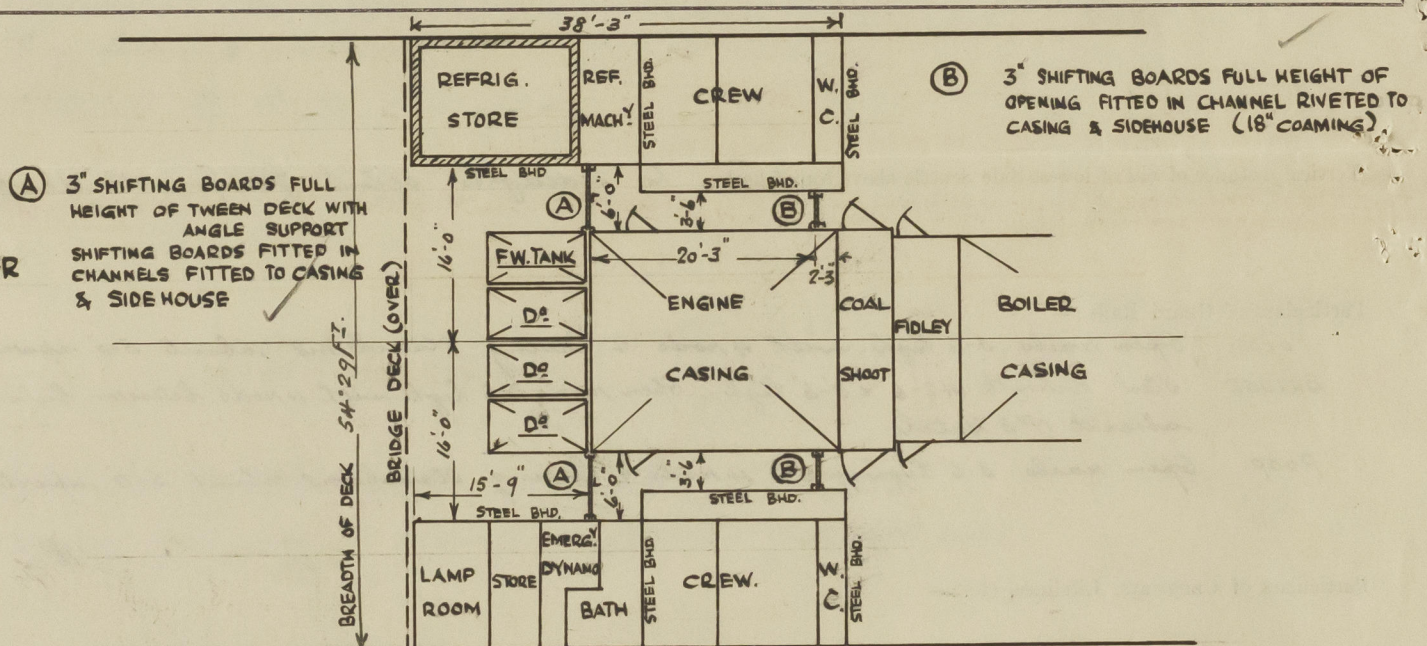


# PARTICULARS OF PROTECTION TO OPENINGS, ETC.

HATCHWAYS ON FREEBOARD AND SUPERSTRUCTURE DECKS.									
FREEBOARD DECK					SUPERSTRUCTURE DECKS.				
Description of Hatchway	N°1 HATCH	N°2 HATCH	(IN BRIDGE)	N°4 HATCH	N°5 HATCH	N°3 HATCH	HATCH ON		
Dimensions of Hatchway	22'-6" x 17'-0"	33'-9" x 17'-0"	13'-6" x 17'-0"	36'-0" x 17'-0"	22'-6" x 17'-0"	11'-3" x 17'-0"	2'-6" x 2'-0"		
COAMINGS	Height above Deck	10 x 3 1/2 x 55 BA	9 x 3 x 40 BA	10 x 3 1/2 x 55 BA	10 x 3 1/2 x 55 BA	18"			
	Thickness	4 x 7 x 3 x 44 BA	4 x 7 x 3 x 44 BA	4 x 7 x 3 x 44 BA	4 x 7 x 3 x 44 BA	18"			
	Stiffeners	COAMING SIDES 50 ENDS 44	COAMING SIDES 50 ENDS 44	COAMING SIDES 50 ENDS 44	COAMING SIDES 50 ENDS 44	18"			
	Brackets, Stays	2 P&S EACH END	3 P&S EACH END	3 P&S EACH END	2 P&S EACH END	18"			
HATCH BEAMS	Number	4	6	2	6	4	1		
	Spacing	4'-6"	4'-10"	4'-6"	5'-1 1/4"	4'-6"	5'-7 1/2"		
	Scantling and Sketch	PL 14 1/2 x 34	15 x 34	14 1/2 x 34	15 3/4 x 35	14 1/2 x 34	13 x 31		
	Bearing Surface	4 x 3 x 40	4 x 3 x 40	4 x 3 x 40	4 x 3 x 40	4 x 3 x 40	4 x 3 x 40		
FORE AND AFTERS	Number	COAL HATCH (P&S) ABRIST N°2 HATCH	COAL HATCH (P&S) ABRIST BOILER CAS.	COAL HATCH (P&S) ABRIST AFT FIDLEY	HATCH IN FOCLE	COAL HATCH (P&S) ABRIST FIDLEY	COAL HATCH (P&S) ABRIST BOILER CASING	COAL HATCH ON CASING TOP	
	Spacing	4'-3" x 4'-1"	8'-6" x 5'-3"	6'-6" x 5'-3"	3'-0" x 3'-0"	6'-6" x 3'-6"	11'-0" x 3'-6"	15'-0" x 15'-8"	
	Unsupported Lengths	COAMING 18 x 34	COAMING 30 x 40	COAMING 30 x 40	COAMING 7 x 3 x 35 BA	COAMING 30 x 44	COAMING 30 x 44	COAMING 7 x 3 x 36 BA	
	Sketch	2 1/2 SOLID NOOD COVERS FITTED AFT BEARING 2 1/2" CLEATS SPACED 24"	2 1/2 SOLID NOOD COVERS FITTED AFT BEARING 2 1/2" CLEATS SPACED 24"	2 1/2 SOLID NOOD COVERS FITTED AFT BEARING 2 1/2" CLEATS SPACED 24"	2 1/2 SOLID NOOD COVERS FITTED AFT BEARING 2 1/2" CLEATS SPACED 24"	2 1/2 SOLID COVERS FITTED AFT BEARING 2 1/2" CLEATS 24" APART 2 TARPULINS	2 1/2 SOLID COVERS FITTED AFT BEARING 2 1/2" CLEATS 24" APART 2 TARPULINS	2 1/2 COVERS FITTED AFT BEARING 3" CLEATS 24"	
HATCH COVERS	Material		3" SOLID NOOD COVERS						
	Thickness		FITTED F&A						
	How fitted		BEARING 3"						
	Bearing Surface								
Spacing of Cleats			CLEATS SPACED 24"						
Number of Tarpaulins			3 TARPULINS TO EACH HATCH. EXCEPT N°3 IN BRIDGE SPACE WHERE 1 TARPULIN FITTED.						
<p>*Are wood fore and afters steel shod at all bearing surfaces? <input checked="" type="checkbox"/></p> <p>Are battens and wedges efficient and in good condition? <input checked="" type="checkbox"/> YES</p> <p>Are tarpaulins in good condition and in accordance with rule requirements? <input checked="" type="checkbox"/> YES</p> <p>Are lashings provided in accordance with rule requirements? <input checked="" type="checkbox"/> YES</p>									

Particulars of any special features:—

## ARRANGEMENT OF AFTER END OF BRIDGE



Endorsement at first survey and at surveys for renewal of Certificate:—

The fittings and appliances are in accordance with the particulars shown on this form (or as now modified) and are in good condition.



© 2020

Lloyd's Register  
Foundation