

Rpt. C. 11 (Contd.)

Index No.

34354

Lloyd's Register of Shipping.

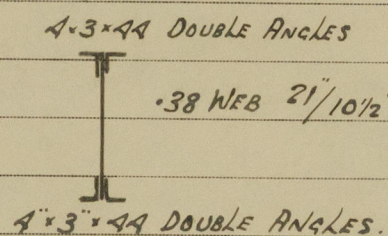
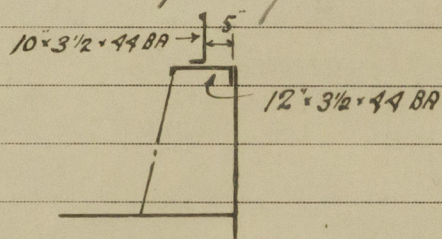
Ship's Name

"PARKWOOD"

Official No. 160738.

Memorandum of alterations reported since ship was surveyed for assignment of Load Lines in

All cargo hatch side coaming altered as shown to house new sliding type beams.

HATCH SIDE.HATCH BEAMS.

Alterations effected at Sp. Survey W. Hartlepool. 6.57. in accordance with approved plan dated 6.2.57.

N. A. Adamson.



Copy attached to Load Line Report on board ship.

Noted.

MAR 5.7.57