

SHIP N° 177. 182-189

PROFILE & DECKS.

SCALE 1/8" = ONE FOOT.

DIMENSIONS: LENGTH L.W.L. 199'-10"
BREADTH MLD. 33'-1"
DEPTH U.D.K. 16'-6"
R.Q.D.K. 21'-0"

To LLOYD'S SURVEY CLASS * 100 A.I.
WITH A FREEBOARD CORRESPONDING TO
A MOULDED DEPTH OF 15'-0 1/4".

BRIDGE ON N° 177 is as shown below

No BRIDGE, SS N° 182 for midship house see separate plan of
"Modification to Midship Erections"

coal about
not fitted
in N° 189
cell.

MASTS, WINCHES, WINDLASS, DECKHOUSES ETC.
SUPPORTED TO SURVEYORS' SATISFACTION.

ENGINE & BOILER CASINGS, COAMINGS 3/4"
PLATING 2/32"
STIFFENED 3/4" x 3/4" at 30" LONG.

DETAILS OF WINCH PLATFORM.

Related sketch of hatch coaming supports and
not slide bars to be submitted when arrangements will be considered.

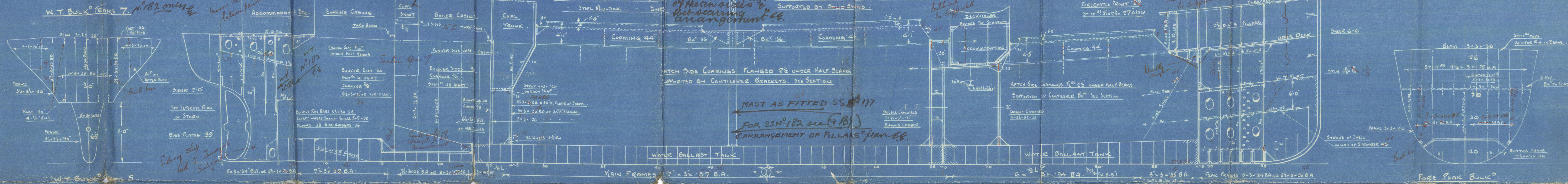
DETAIL OF BRIDGE FRONT CONNECTIONS N° 177.

SHELL PLATING AT BREAK
but arranged to Surveyors' Satisfaction.

FRAMES ABOVE W.T. PLAT 5/8" x 3/4" A.R. 5/8" x 3/4" A.R.
TO UPPER FLOOR DECKS ALTERNATELY
INT. FRAMES IN FILL 3/4" x 2/8" SHEATHED.

For Hatch Coamings
N° 182 see Plan
of Hatch Stairs &
"this securing
arrangement" etc.

MAST AS FITTED SS N° 177
FOR SS N° 182 see (189)
ARRANGEMENT OF PILLARS PLAN etc.



RAISED QUARTER DECK. HALF BEAMS 3/4" x 3/4" 30" O.A. KNEES 21" x 38"

FRAMES SPACED 24" APART THROUGHOUT.

N° 3 HATCH. 28'-6" x 20'-6" 4'-1" COAMINGS. 3 COVERS. WEBS 5/8" AMPT. 20" x 375" ANGLES 4" x 3/4"

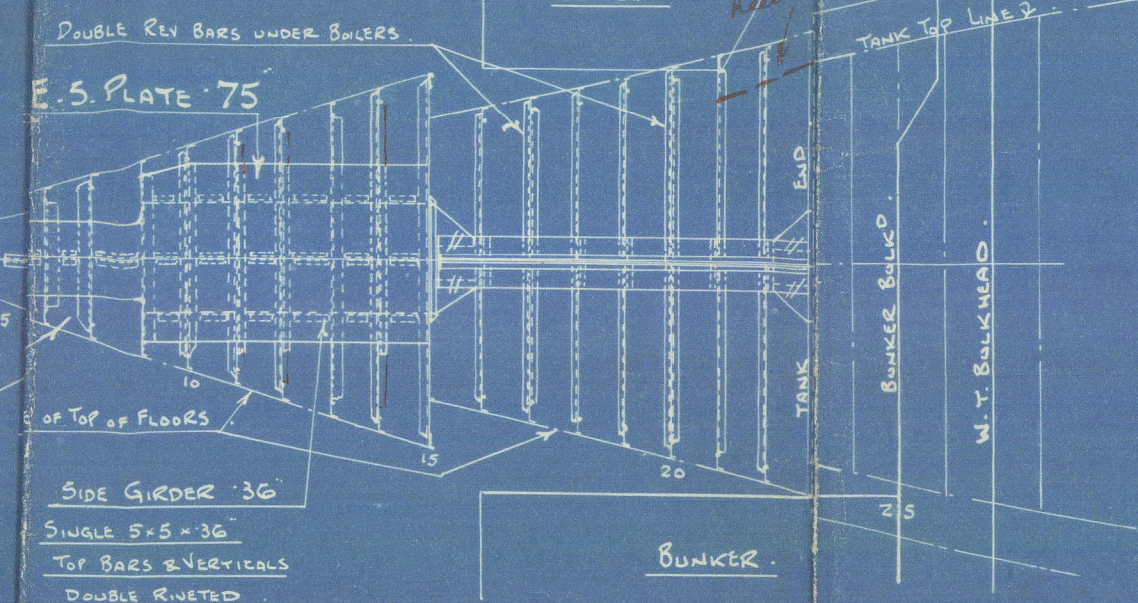
N° 2 HATCH. 28'-6" x 20'-6" 4'-1" COAMINGS. 3 COVERS. WEBS 5/8" AMPT. 20" x 375" ANGLES 4" x 3/4"

DIAPHRAGM AT HATCH SIDE P&S.

FORECASTLE DECK.

WATERTIGHT FLAT.

FLOORS IN E & B SPACES.



SECTION THRU ENGINE SPACE.

DIAPHRAGM 13'-0" FROM E P&S.

N° 1 HATCH. 21'-0" x 20'-6" 4'-3" COAMINGS. 3 COVERS. WEBS 5/8" AMPT. 22" x 38" ANGLES 4" x 3/4"

UPPER DECK.

FORE PEAK STRINGER.

SECTION THRU BOILER SPACE. DRAWN FOR FRAME N° 20.

APPROVED for 182
LLOYD'S REGISTER OF SHIPPING
Hickman 6.5.18

STRENGTHENING OF BOTTOM FORWARD OF 1/2 LENGTH.

APPROVED
LLOYD'S REGISTER OF SHIPPING
Hickman

APPROVED for 189
LLOYD'S REGISTER OF SHIPPING
Hickman

DATE 12/12/18

17 FEB 1891

Lloyd's Register Foundation

THE BURNTISLAND SBCO
N^o 177

PROFILE & DECK

1/5 Parkwood

also N^o 182

s.s. "Avonwood"

Lth. Rpt. No. 18678.

Also No 189.

s.s. "Westwood"

Lth. Rpt. No. 18879.



© 2021

Lloyd's Register
Foundation

003620-003624-0060