

Lloyd's  
 13/12/33  
 12/12/33

LLOYD'S NUMERALS  
 D = 34.0  
 L x D = 15640  
 L x (D + D) = 42780  
 L/D = 13.52

EQUIPMENT TO RULE.

# MIDSHIP SECTION

OIL TANKER

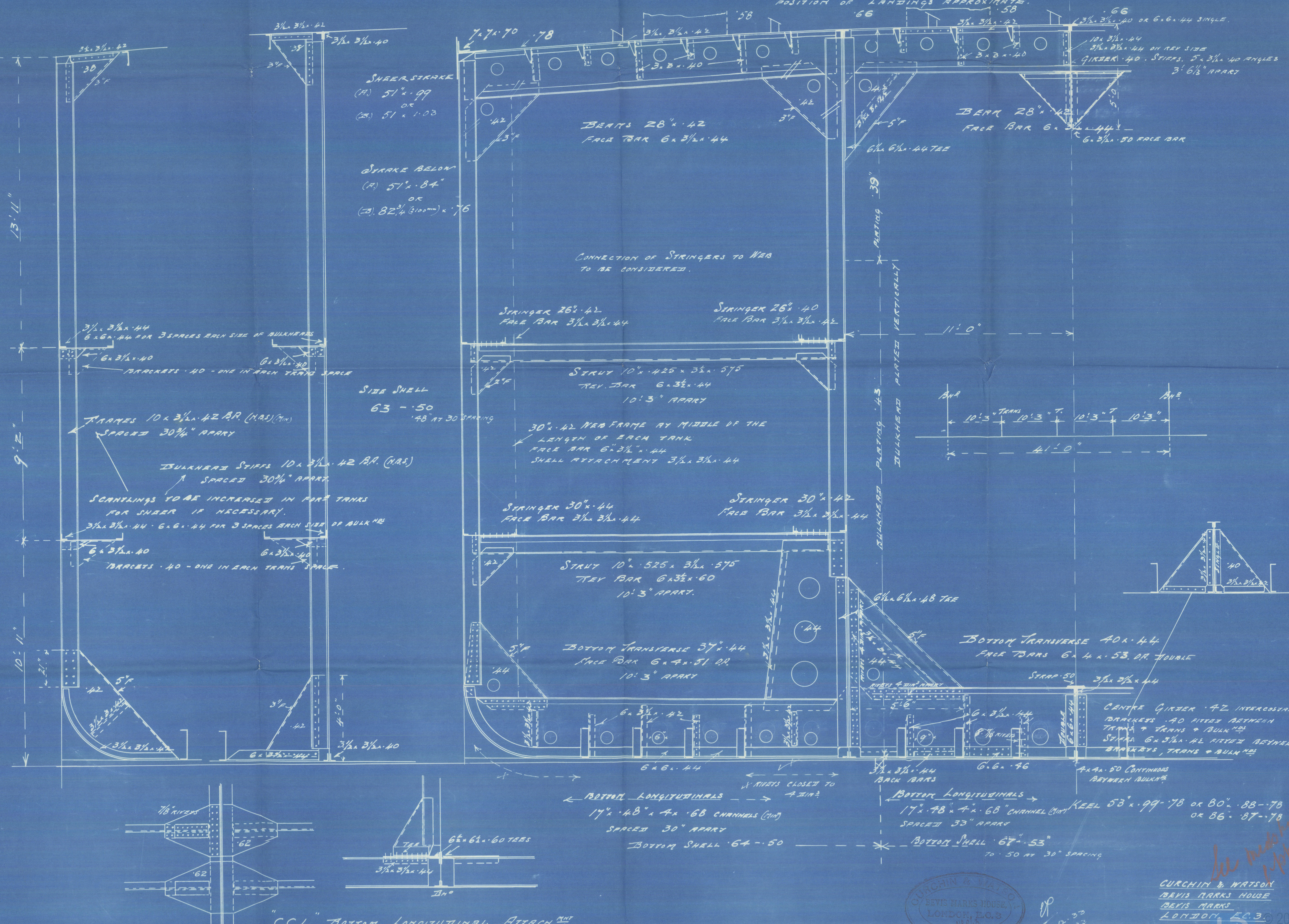
460'0" x 59'0" MLD x 34'0" MLD

CLASS LLOYD'S 100.A.I. CARRYING PETROLEUM IN BULK LONGITUDINAL FRAMING AT BOTTOM AND DECK  
1/2" SCALE

SCANTLING CLEAR OF OIL TANKS TO BE CONSIDERED SPECIALLY  
SUITABLE INCREASES TO BE MADE FOR SHEER

DECK LONGITUDINALS 8 x 3 1/2 x 44 (N.B.) AT 30" SPACING 8 x 3 1/2 x 46 (N.B.) AT 33" SPACING.

DECK THICKNESSES ASSUME ONLY ONE 4'0" OPENING IN ONE LINE ACROSS FULL WIDTH OF DECK  
POSITION OF LANDINGS APPROXIMATE.



"C.C.L." BOTTOM LONGITUDINAL ATTACH

CURCHIN & WATSON  
 BEVIS MARKS HOUSE  
 LONDON, E.C.3  
 12/12/33

CURCHIN & WATSON  
 BEVIS MARKS HOUSE  
 BEVIS MARKS  
 LONDON, E.C.3

See note on page 234  
 12/12/33

Workman. Clark.

no 536.

Mid ship Section.

Y.

M/V "ACAVUS"

REMAIN

© 2021

003620 - 003624 - 0006

Lloyd's Register  
Foundation