

18/1/24

# "ACAVUS"

Nº 536 MOTOR TANKER.

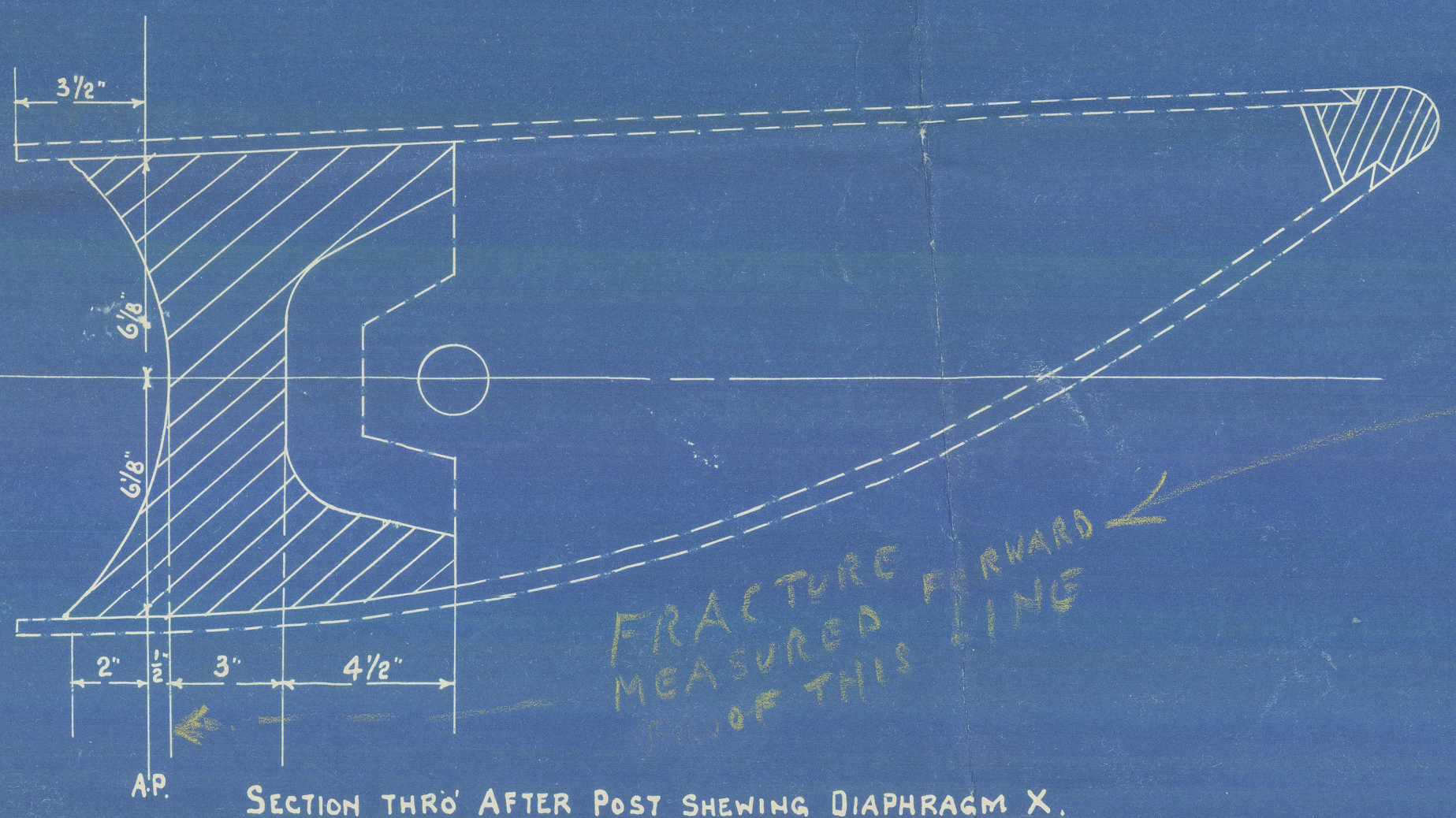
## PLAN OF STERNFRAME AND RUDDER.

SCALE 1/2" = 1 FOOT.

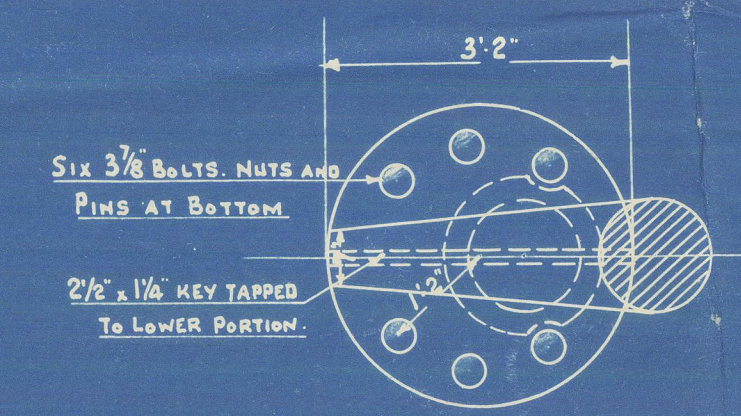
STERN FRAME CAST STEEL.  
RUDDER FRAME FORGED STEEL.  
UPPER STOCK AND ALL PINTLES FORGED STEEL.

ALL TO LLOYDS TESTS AND APPROVAL.

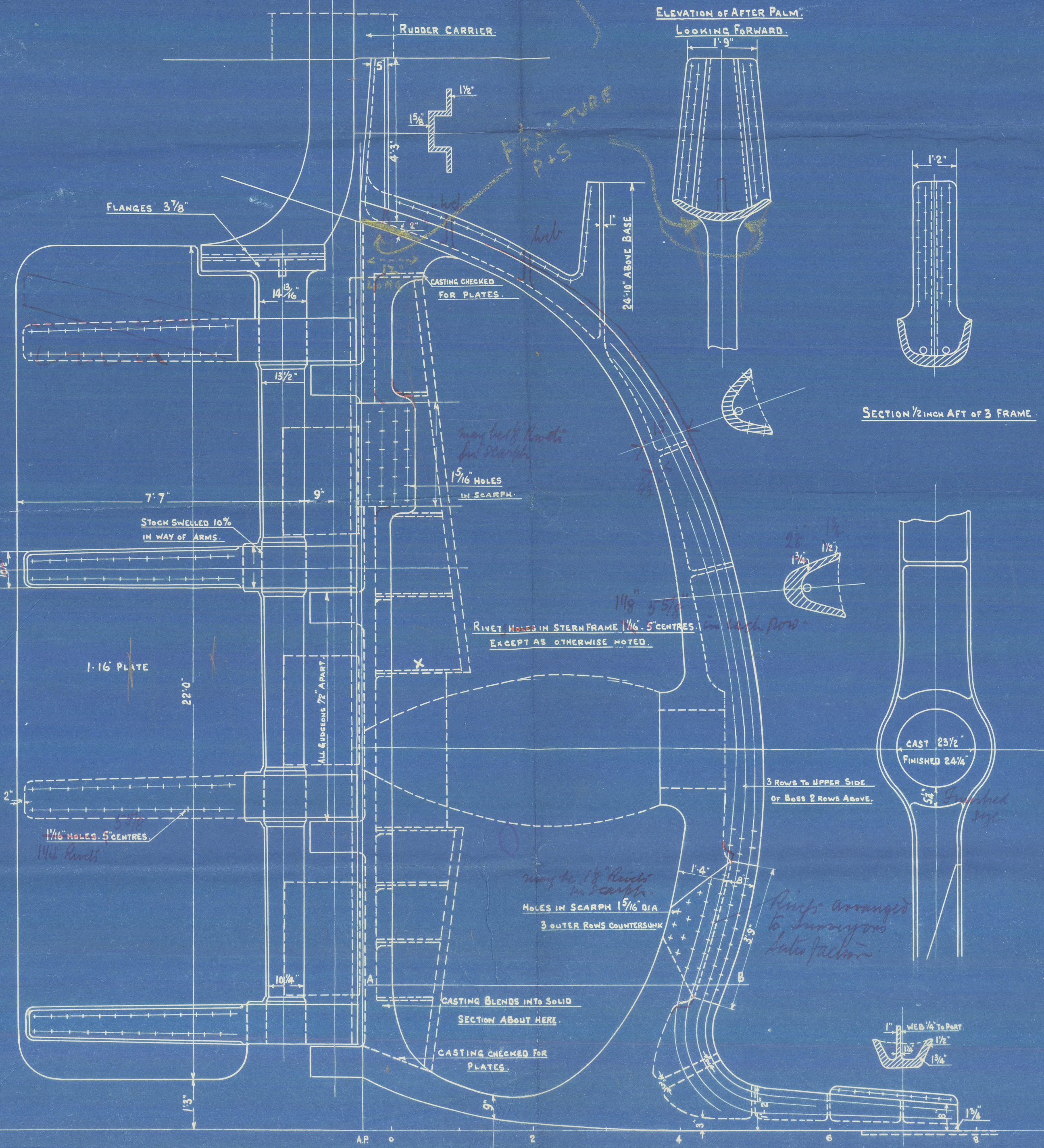
TAIL SHAFT 15" DIA.  
LOAD DRAFT 27'-6"  
SPEED LOADED 12 KNOTS.



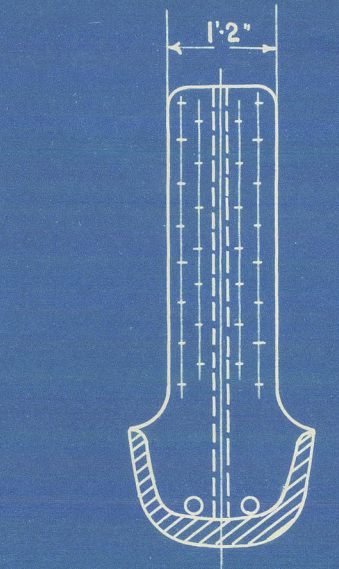
SECTION THRO AFTER POST SHEWING DIAPHRAGM X.



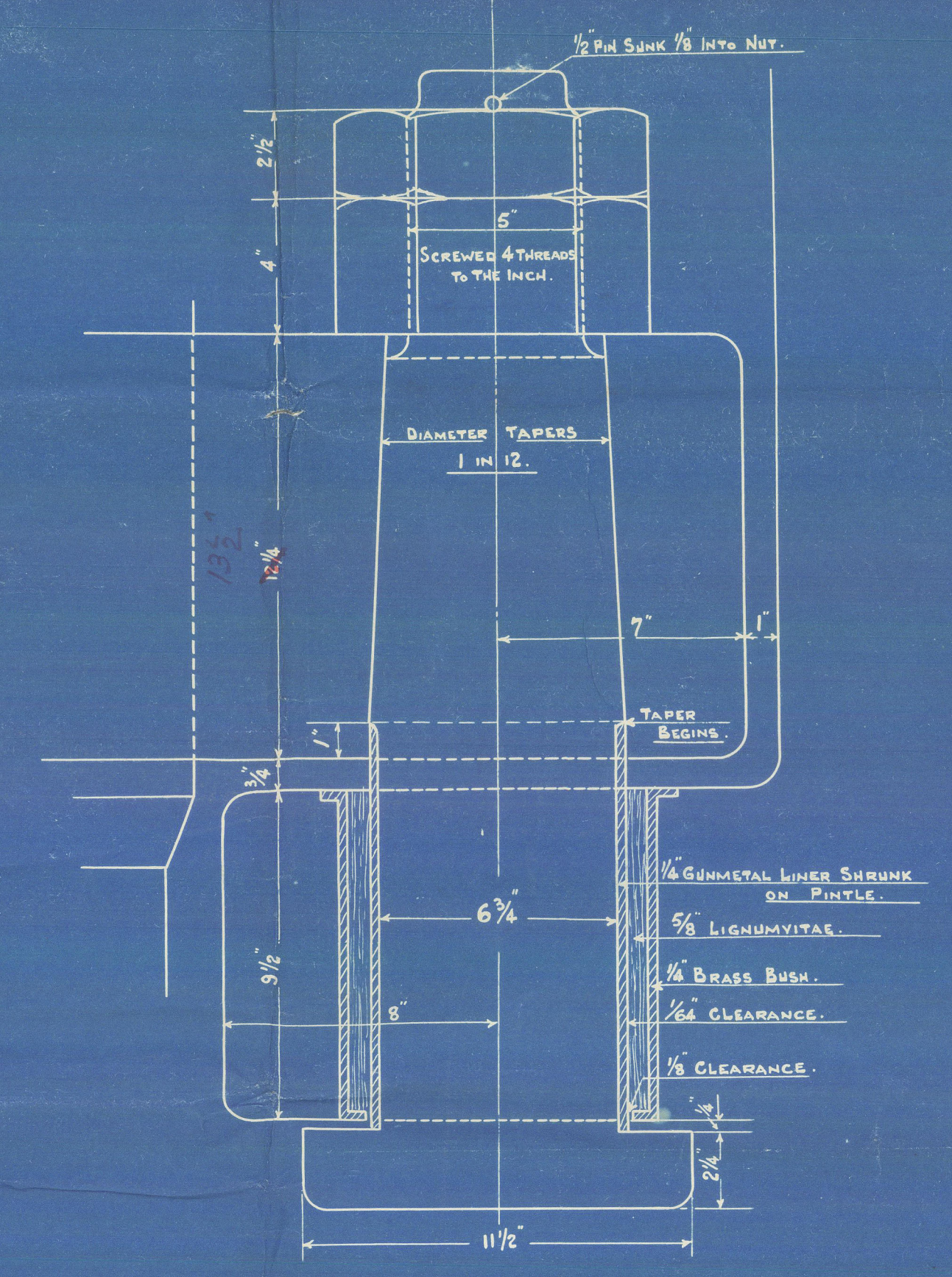
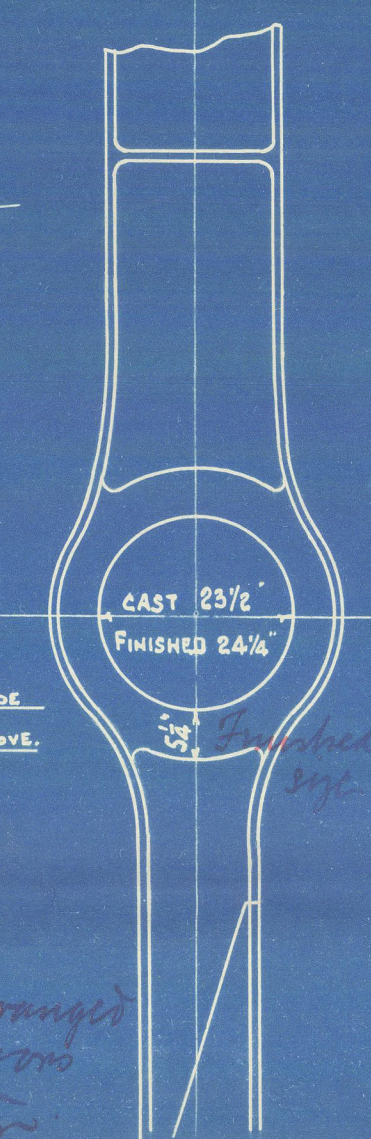
DETAIL OF COUPLING.



ELEVATION OF AFTER PALM, LOOKING FORWARD.

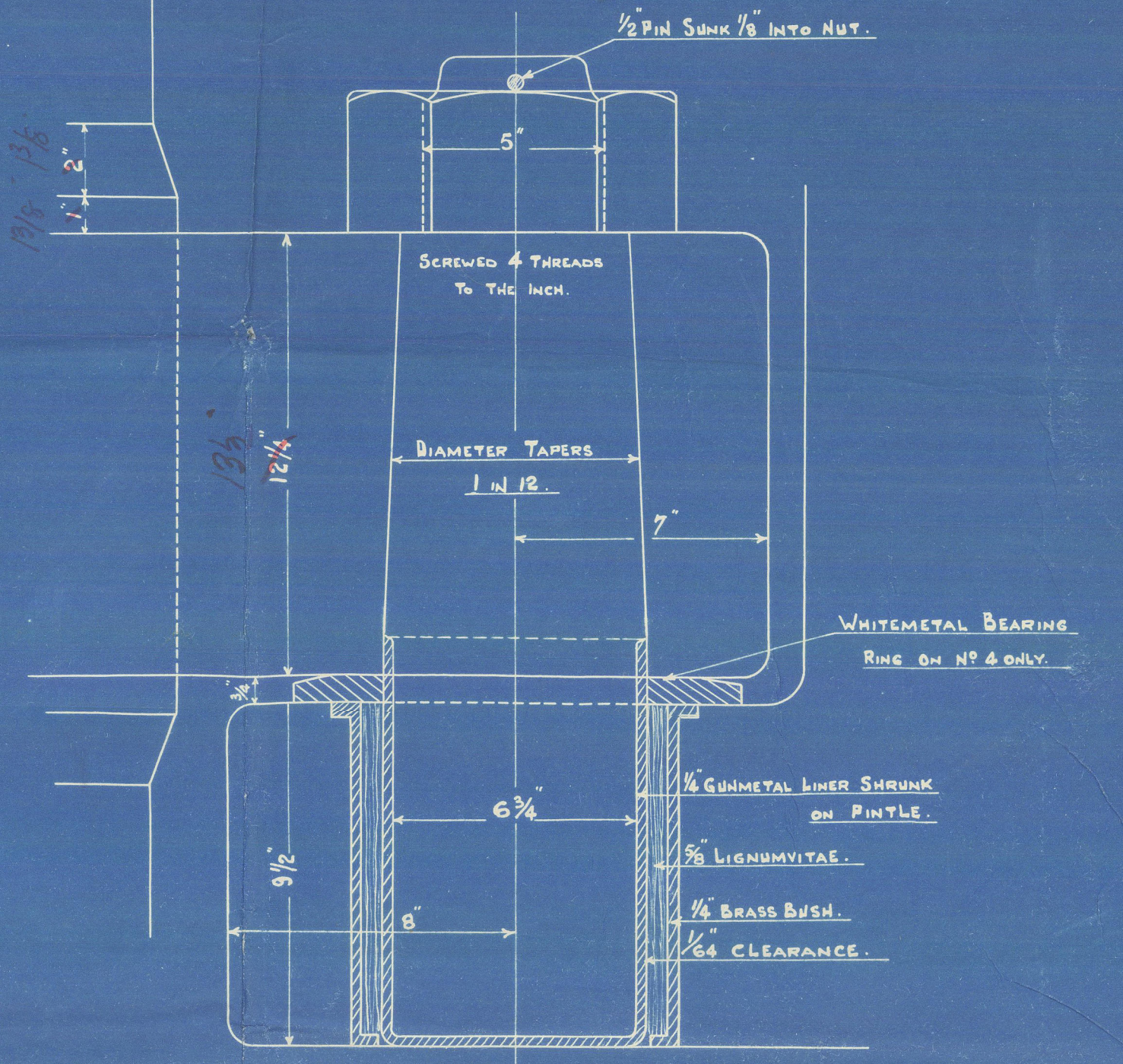


SECTION 1/2 INCH AFT OF B FRAME.



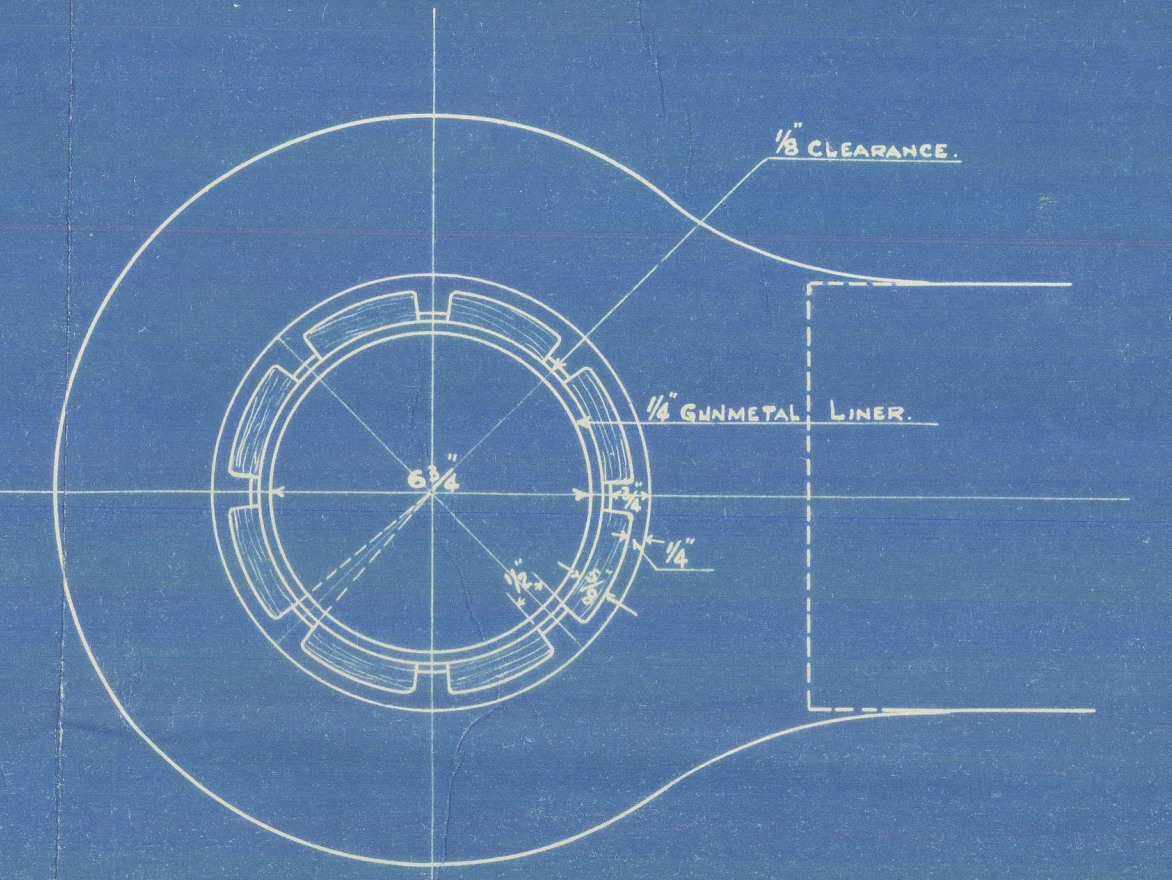
DETAIL OF Nº 1 PINTLE & GUDGEONS.

SCALE 3" = 1 FOOT.



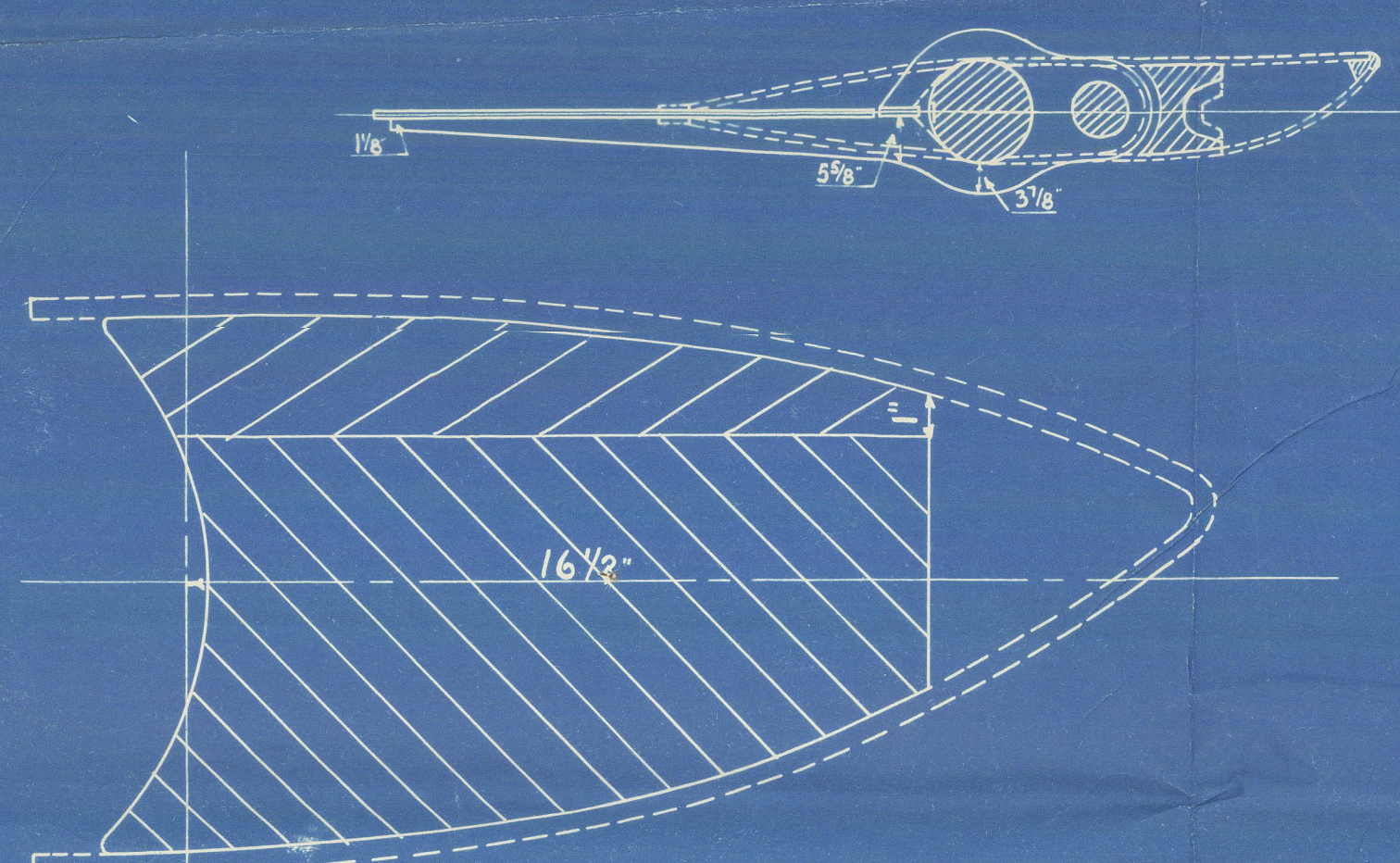
DETAIL OF Nºs 2, 3 & 4 PINTLES & GUDGEONS.

SCALE 3" = 1 FOOT.

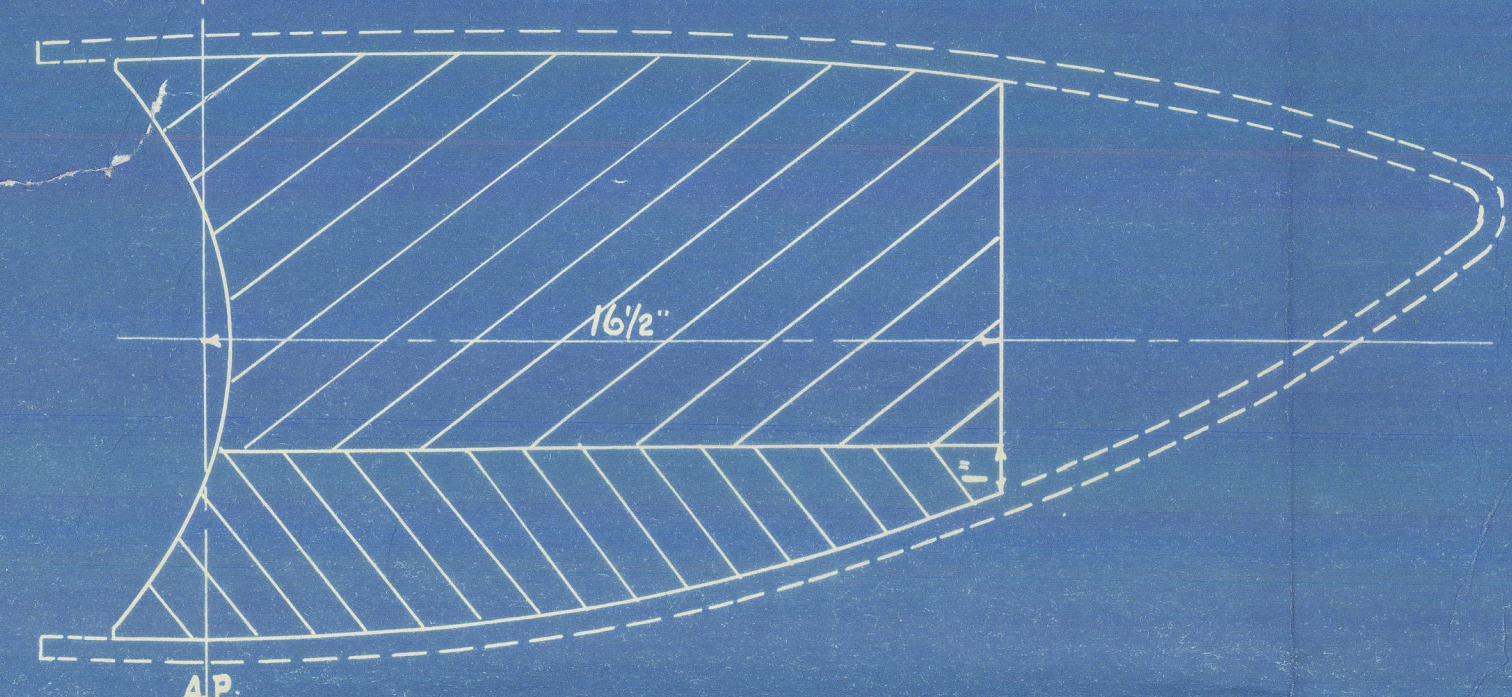


SECTION SHOWING BUSHING OF ALL GUDGEONS.

SCALE 3" = 1 FOOT.



SECTION OF AFTER POST OF STERNFRAME AT TOP OF SCARP.



SECTION OF AFTER POST OF STERNFRAME AT BOTTOM OF SCARP.

Post same form below shaft centre as above centre, except that noses on contra blades point opposite way, these point to port side above shaft centre and to starboard below shaft centre.

PLAN LOOKING DOWN THROUGH A.B.

18-1-24

003624-0005



Wickman, Clark.

no 536

Stamp from A Thuders

5.

M/V "ACAVUS"

See also No 20121

---

003620-003624-0005



Lloyd's Register  
Foundation