

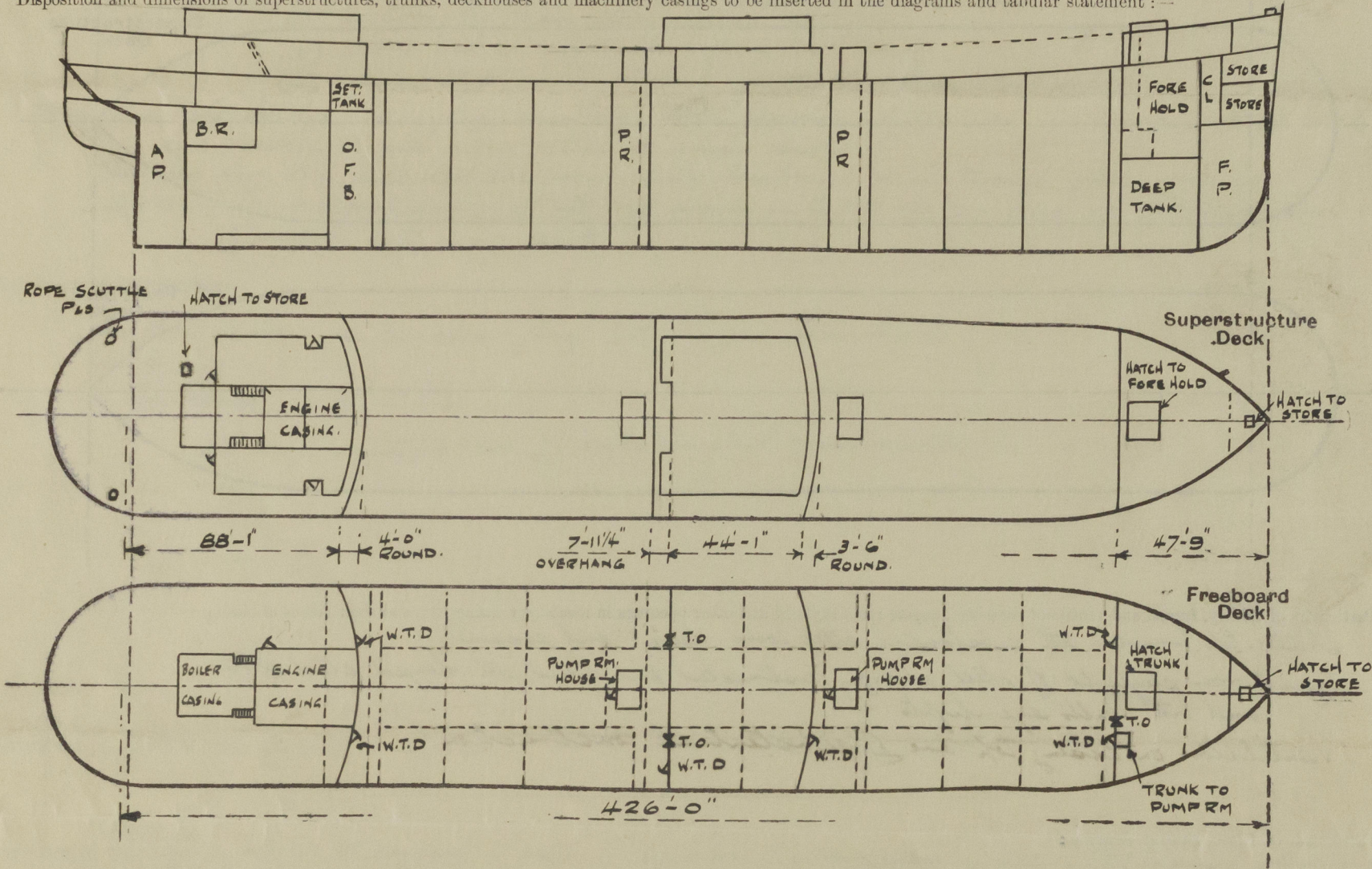
Lloyd's Register of Shipping.  
SURVEYS FOR FREEBOARD.  
(CONDITIONS OF ASSIGNMENT.)

Index No. \_\_\_\_\_  
(For London Office only).

F. 81

Ship's Name LINGULA Port of Survey BELFAST.  
Official Number 181594 Surveyor's Signature K. Dawson.  
Nationality and Port of Registry BRITISH LONDON. Date of Survey DURING CONSTRUCTION.

Disposition and dimensions of superstructures, trunks, deckhouses and machinery casings to be inserted in the diagrams and tabular statement :—



Particulars of Superstructures, Trunks, Casings, Deckhouses.

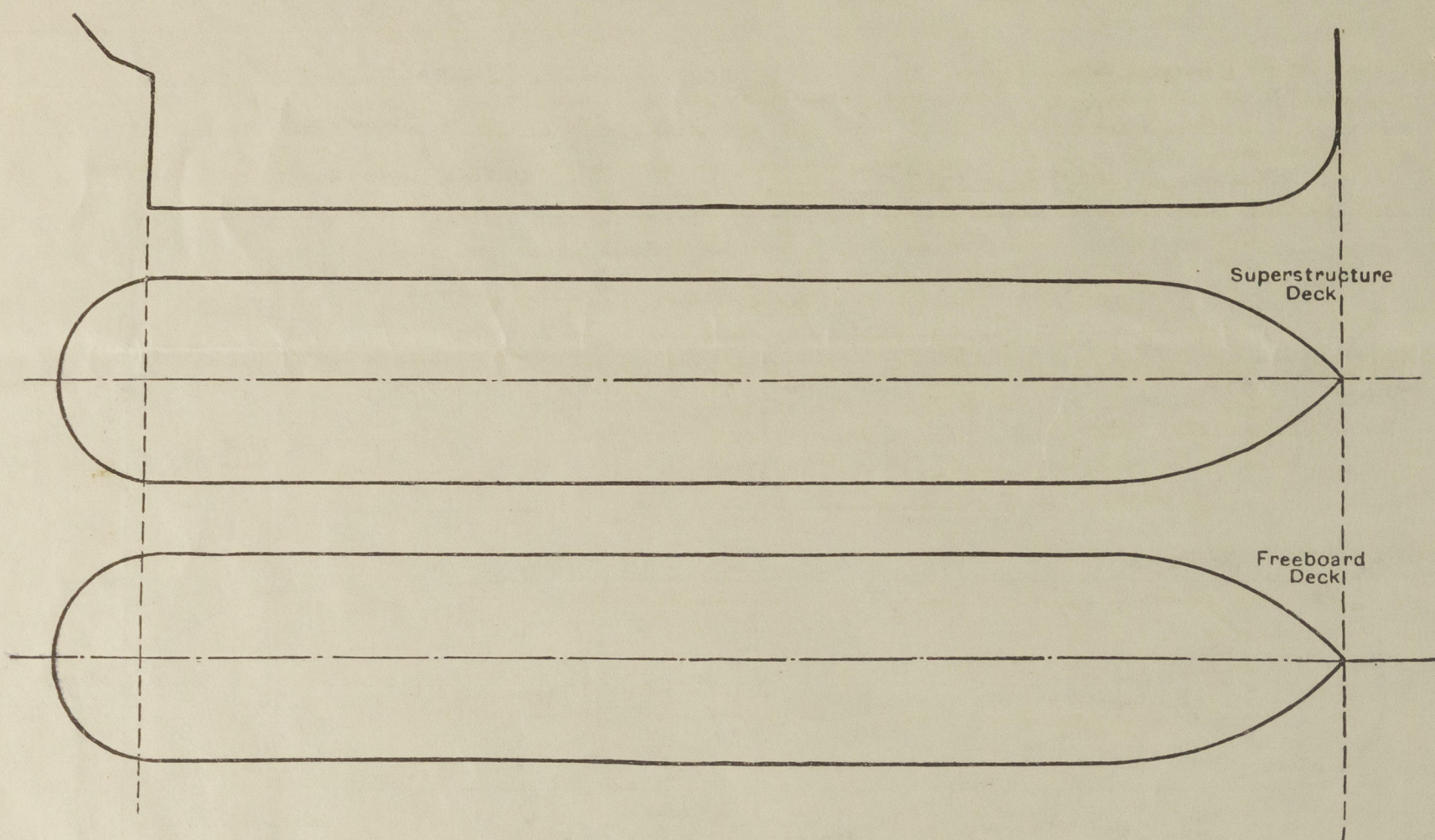
	Coaming	Plating	Stiffeners	Spacing	End Attachments of Stiffeners	Size of Openings	Height of Sills	Height of Casings
Poop Bulkhead ...	.44	.44	8 x 3 1/2 x .50 O.A. WELDED TOE ON.	30" TO 33"	WELDED TOP & BOTTOM.	2 @ 5'-0" x 2'-6"	18"	8'-0"
Raised Quarter Deck Bulkhead ...	✓	✓	✓	✓	✓	✓	✓	✓
Bridge, After Bulkhead ...	.30	.30	5 x 3/8" FLATS WELDED	30" to 35 1/2"	WELDED TOP & BOTTOM	2 @ 5'-0" x 2'-6" 1 @ 5'-0" x 2'-0"	18"	7'-6"
Bridge, Forward Bulkhead ...	.44	.44	8 x 3 1/2 x .44 O.A. WELDED TOE ON.	24" to 35"	Do	1 @ 5'-0" x 2'-6"	18"	7'-6"
Forecastle Bulkhead ...	.30	.30	5 x 3/8" FLATS WELDED.	29" to 33"	Do.	1 @ 5'-0" x 4'-0" 1 @ 5'-0" x 2'-6" 1 @ 5'-0" x 2'-0"	18"	7'-6"
Trunk, Aft ...	✓							
Trunk, Forward ...	✓							
Exposed Machinery Casings on Freeboard or Raised Quarter Decks ...	✓							
Exposed Machinery Casings on Superstructure Decks ...	NOT EXPOSED							
Machinery Casings within Superstructures not fitted with Class I Closing Appliances ...	✓							
Deckhouses on Flush Deck Ships ...	✓							

Particulars of Closing Appliances (state if capable of being manipulated from both sides).

Poop Bulkhead ...	2 Hinged steel watertight doors, operated from both sides
Raised Quarter Deck Bulkhead ...	
Bridge, After Bulkhead ...	One hinged steel watertight door, operated from both sides 2 Portable steel plates secured by Hook bolts.
Bridge, Forward Bulkhead ...	One hinged steel watertight door, operated from both sides.
Forecastle Bulkhead ...	2 Hinged steel watertight doors, operated from both sides.
Exposed Machinery Casings on Freeboard or Raised Quarter Decks ...	One portable steel plate (stiffened), secured by hook bolts
Exposed Machinery Casings on Superstructure Decks ...	
Machinery Casings within Superstructures not fitted with Class I Closing Appliances ...	
Deckhouses on Flush Deck Ships ...	



The following diagrams should be used to indicate the positions of cargo and coaling hatchways, gangway, cargo and coaling ports, ventilators, companionways, etc., which would affect the seaworthiness of the ship:—



Engine room skylight of steel strongly constructed and fitted with hinged steel flaps and with balls eye lights.

Ventilators on casing top are of substantial construction

None.

Steel Trunk built into forecabin front 5.5. 2-0.3-0 x .30 plating, leading to forward pump room, door opening 5-0 x 2-0 with 18" all closed by steel hinged 4.7. Door secured by toggle.

Deckhouse on Prop deck ahead beam, space, stowage, 10.5 leading to bilge water in Prop. space of steel, strongly constructed .30 x 26 thick with slope 4 x 2 1/2 x 1/4 OA at side & 4 x 2 1/2 x 1/4 OA at front with opening 4 ft 5-4 x 7-3 with 15" walls, closed by 2" solid hinged wood door, operated from both sides.

Access to Large Pump Room. One in forward & one in after well deck. Deckhouse 13-6 x 8-3 x 7-6 high 2.40 x .36 plating slope 5-4 x 32 OA welded on and spaced 2 1/2 x 30 apart. One hinged steel watertight door in each beam, opening 5-0 x 27 with 24" compound & secured by toggle. Hts. 4.7 and wood door operated from both sides.

Forecastle Deck:-  
2-8" S.W. to main deck stowes 2-9" high  
4-6" C.V. to deck stowes, coamings 36" x .30  
3-10" C.V. to Rump km, hold & Fils 36" x .32  
upper deck:-  
2-24" C.V. demish posts to forward Rump km.  
2-24" " " aft.  
Demish post suitably braced to deck and  
for deck

Birdie Lake.

7-6" dia M.V. to spaces in Bridge Truss deck, coaming 30" x 30"

Proof deck:-

12-8"x4" S.N.V. to breed parrotfishes, W.C. stones & Dr. in R.

Forecastle deck:-  
1-4" dia to Fore Peak 2'-2" high & clip.  
2-4 " " Deep tank 2-9 " " "  
upper deck:-  
2-4" dia to O.F. Bunkers 10'-0" high & clipped.  
2-4 " " aft cofferdam 10'-0" " " "  
2-3 " " " 7'-6" " " "  
1-4 " " Settling tank 10-0 " " "

All our pipes provided with canvas  
covers or wire gauge.

Boat deck:-  
4-8' x 4" type type vents to Pantry, W.C. etc coaming 24"  
4-12" C.V. 5" escape way, below coaming 30" x 34"  
4-10" C.V. " " " " " 30" x 32"  
2-8" C.V. " Smoke Room " 30" x 30"  
1-6" C.V. " Crews lavatory " 30" x 30"

all cow vents provided with flaps and canvas covers and Swan neck, Buckhorn and Lytle type vents with canvas covers.

Prof deck:-

3-3"	sea to	Lat; oil tanks	2'-6"	high to	slip
4-2 1/2"	"	P.W. Tanks	2'-9"	"	"
1-2 1/2"	"	stem conn.	2'-9"	"	"
1-3"	"	Rudder trunk	3'-0"	"	"
2-3"	"	after Peak	2'-9"	"	"

Basins, top:-

2-4"	dia to Engine Room D.B. Drain tank	1-6 high
2-4 "	" " " " " " QF	1-6 "
2-2 1/2 "	" " " " " "	1-6 "
1-2 "	" " " " " "	1-6 "

None.

Lingula

Forecastle & Bridge spaces:- Drainage from these spaces is by means of 2" dia holes, with screwed plugs in fore-castle front and bridge aft end bulkhead.

From Freeboard deck in wells:- Scuppers are cut in gunwale and sheerstrake & discharge overboard thro' cast steel scuppers.

Poop space:- Sanitary discharges and scuppers from freeboard deck within poop space led overboard below freeboard deck with storm valves at ships side and with.

(a) Automatic non-return valves on

(4) Non valves controlled from Pump deck

(c) 14 - 16 on deck in full of Am. Red deck

Coop and upper bridge:- Sanitary discharge from accommodation on bridge and Coop deck

led overboard with storm valves at snipe side.  
 Another for Bilge keel, another for bilge, another deck drain over boards!

Species below freeboard deck :- At aft end drain into E.R. bridges and at forward end of vessel, into drain Lato.

In Pop. spec - 10" dia clear glass with hinged deadlights

\* Bades - R' " " " " " "

\* Backman =  $13'' 14'' + 16''$

all side scuttles are of substantial construction

Vertical distance of Sill of lowest Side Scuttle above top of keel *None below freeboard deck.*

GANGWAYS  
Particulars of Gangways: - Love & 4th gangway in wells, 7-6 high above freeboard deck of 6x3x8  $\frac{5}{8}$  channel stringers connected by 5x3x30 angle transverse spaced 7-6 apart with intermediate 3x3x30 angle transverse. Gangway plates  $\frac{3}{8}$  chequered and fitted with handrails 5-6 high, 2 rails and stanchions spaced about 4-6 apart. Gangway supported by bracing to deck with 4x4x40 angle spaced 7-6 apart with spread of 3-3 at platform to 5-3 at upper deck. Supports braced transversely by 3x3x $\frac{1}{2}$  and 5x3x30 angles diagonally and longitudinally by tee bars 3x3x $\frac{3}{4}$  fitted diagonally and at alternate spaces all transverse and longitudinal being braced to top & bottom.

Particulars of <sup>GUARD RAILS</sup> ~~Language~~, Lifelines, etc.:— On Pop. Bridge and Forecastle and between Bulwarks in Wells  
3'-8" high with 3 rails. Stanchions spaced 4'-6" to 5'-0" apart. ✓

Particulars of Freeing Arrangements.						
	Length of Bulwark	Height of Bulwark	Size of Freeing Ports	Number each side	Area each side	Rule area each side
After Well ... ..	18-0	3-6	3-0 x 15-	1	50% open rails.	✓
127-1 1/2 at Bridge	50-0			2		
Forward Well ... ..	18-0	3-6	3-0 x 15	1	50% open rails.	✓
118-9 at Side	39-0			1		
<p>State position of each freeing port ... .. { After Well:— From Port Front 1-0 " Bridge end 8-0 x 28-0 (F. and A. position and height above deck edge) { Forward Well:— " Port Front 1-0 " Side Front 11-6 } 15' high above deck.</p> <p>State whether the freeing ports are fitted with shutters, bars, or rails, and give particulars of such:— 3 vertical bars each opening.</p> <p>Additional area where sheer is less than standard. ✓</p>						



PARTICULARS OF PROTECTION TO OPENINGS, ETC.

HATCHWAYS ON FREEBOARD AND SUPERSTRUCTURE DECKS.									
		FREEBOARD DECK				POOP DK		FORE DK	
Description of Hatchway	...	24 CARGO TANKS.	8 COFFERDAM O.F. BUNKER	FORWARD STORES.	AFTER STORES.	2 ROPE SCUTTLES	AFTER STORES	FORE HOLD	FORWARD STORE
Dimensions of Hatchway	...	4'-0" DIA	23" x 18"	30" x 30"	30" x 30"	16" DIA	27" x 27"	8'-0" x 8'-0"	18" x 14"
COAMINGS	Height above Deck	10"	7"	9" BA	3 1/2"	9"	9" BA	30"	9" BA
	Thickness	.75	7 x 3/2 x .50	.44	.33	.44	.44	.46	.44
	Sides	✓	ANGLE WELDED	✓	✓	✓	✓	6 x 3 x .32 BA	✓
	Ends	✓	TOE ON.	✓	✓	✓	✓	TRUNKED.	✓
HATCH BEAMS	Number	✓	✓	✓	✓	✓	✓	✓	✓
	Spacing	✓	✓	✓	✓	✓	✓	✓	✓
FORE AND AFTERS	Scantling and Sketch	✓	✓	✓	✓	✓	✓	✓	✓
	Bearing Surface	✓	✓	✓	✓	✓	✓	✓	✓
HATCH COVERS	Material	STEEL	STEEL	STEEL	STEEL	STEEL	STEEL	STEEL	STEEL
	Thickness	.40	.44	.44	.25	.38	.44	STIFF	.44
	How fitted	HINGED	BOLTED	HINGED	HINGED	STRONGBACK WITH HOOK TOGGLE	HINGED	6 x 3 x .32 BA	HINGED
	Bearing Surface	O.T.	O.T.	W.T.	✓	✓	W.T.	W.T.	W.T.
Spacing of Cleats	...	TOGGLES SPACED 19" APART.	✓	TOGGLES SPACED 18" APART.	✓	AND JOINTED W.T.	TOGGLES SPACED 18" APART	TOGGLES SPACED 20" APART	4 TOGGLES.
Number of Tarpaulins	...	19" APART.	✓	18" APART.	✓	W.T.	18" APART	20" APART	4 TOGGLES.
*Are wood fore and afters steel shod at all bearing surfaces? ✓									
Are battens and wedges efficient and in good condition? ✓									
Are tarpaulins in good condition and in accordance with rule requirements? ✓									
Are lashings provided in accordance with rule requirements? ✓									

Particulars of any special features:— *Guard Rails fitted around cargo Latches.*

Endorsement at first survey and at surveys for renewal of Certificate:—

The fittings and appliances are in accordance with the particulars shown on this form (or as now modified) and are in good condition.



© 2020

Lloyd's Register Foundation