

SUNDERLAND SHIPBUILDING CO. LTD.  
15, RAYING OFFICE  
202/15 2 FEB 1916  
SUNDERLAND

1.6.16  
1.7.16

12  
Hull in  
steam pipe forward!

# PROFILE N° 292 1/2

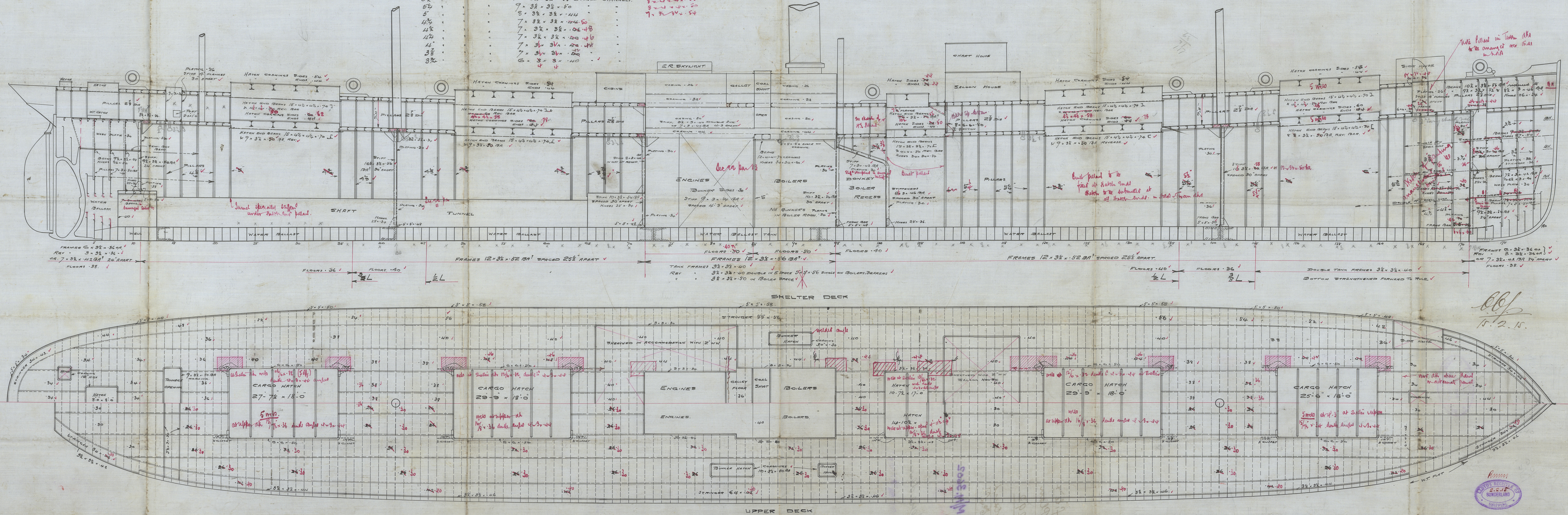
DIMENSIONS  
LENGTH 385'-0" BREADTH M° 52'-8 1/2" DEPTH M° 26'-9"  
SCALE 1" = 1 FOOT

CLASS 100 A.I. LLOYDS (SHELTER DECK)

TABLE OF EQUIVALENT PILLARS IN HOLDS

SOLID ROUND PILLARS	10 1/4 x 14 x 70	DOUBLE CHANNELS
5 1/2"	10 x 14 x 4 x 66	
5 1/2"	10 x 14 x 3 1/2 x 58	DOUBLE CHANNELS
5 1/2"	7 x 3 1/2 x 3 1/2 x 50	
5"	8 x 3 1/2 x 3 1/2 x 44	
4 1/2"	7 x 3 1/2 x 3 1/2 x 40	
4 1/2"	7 x 3 1/2 x 3 1/2 x 36	
4 1/2"	7 x 3 1/2 x 3 1/2 x 32	
4"	7 x 3 1/2 x 3 1/2 x 28	
3 1/2"	7 x 3 1/2 x 3 1/2 x 24	
3 1/2"	6 x 3 x 3 x 140	

may be  
8 x 4 x 4 x 70  
8 x 4 x 4 x 64  
8 x 4 x 4 x 55  
8 x 4 x 4 x 50  
7 x 3 1/2 x 4 x 54



66/15.2.15





Profile &  
Deck Plan

No. 292

Sunderland  
S. B. Co. Ltd.

M/M. 3602

Aberdeen

SUNDERLAND RPT. NO. 2702



© 2020

Lloyd's Register  
Foundation

003599-003604-0174