



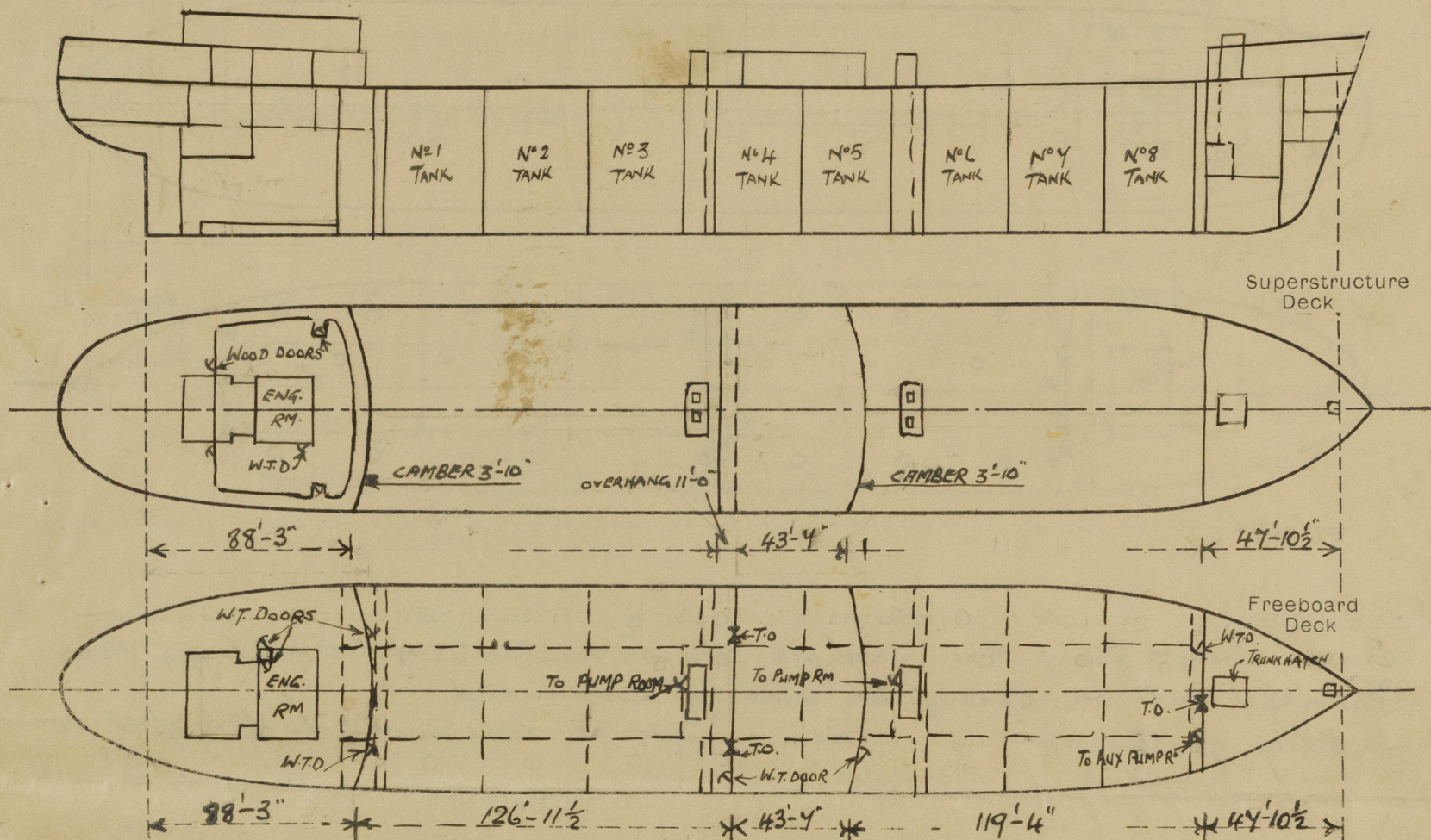
Lloyd's Register of Shipping.

SURVEYS FOR FREEBOARD.

(CONDITIONS OF ASSIGNMENT.)

Ship's Name **LATIRUS**Port of Survey **NEWCASTLE-ON-TYNE**Official Number **183036**Surveyor's Signature **A. McQueen**Nationality and Port of Registry **BRITISH LONDON**Date of Survey **During Construction**

Disposition and dimensions of superstructures, trunks, deckhouses and machinery casings to be inserted in the diagrams and tabular statement:—



Particulars of Superstructures, Trunks, Casings, Deckhouses.

	Coaming	Plating	Stiffeners	Spacing	End Attachments of Stiffeners	Size of Openings	Height of Sills	Height of Casings
Poop Bulkhead ...		44	9x3 1/2 x 44 BA	30"	BKTS TOP & WELDED BOTTOM	5'-0" x 2'-6"	1'-6"	8'-0"
Raised Quarter Deck Bulkhead ...						5'-0" x 2'-0"		
Bridge, After Bulkhead ...		30	4x3 x 35	27"	BKTS TOP	2 5'-1" x 3'-1"	1'-6"	7'-6"
Bridge, Forward Bulkhead ...		44	2 10x3 1/2 x 44 BA	1'-9" to 3'-0"	2 BOTTOM	5'-0" x 2'-6"	1'-6"	7'-6"
Forecastle Bulkhead ...		32	4x3 x 35	28"		5'-0" x 4'-1" 4'-6" x 2'-6" 4'-0" x 2'-0"	1'-8" 2'-0" 2'-0"	7'-6"
Trunk, Aft ...								
Trunk, Forward ...								
Exposed Machinery Casings on Freeboard or Raised Quarter Decks ...								
Exposed Machinery Casings on Superstructure Decks ...								
Machinery Casings within Superstructures fitted with Class I Closing Appliances ...	30	26	3x3 x 30	26"-30"	RIVETED TO BEAM AT TOP	5'-6" x 2'-0"	9"	8'-0"
PUMP ROOMS			40x30 AFT	24"	BKTS TOP			
Deckhouses on Flush Deck Ships ...			40x30 AFT 40x30 FWD	24" 30"	WELDED AT BOTTOM	4'-0" x 2'-3"	24"	7'-6"

Particulars of Closing Appliances (state if capable of being manipulated from both sides).

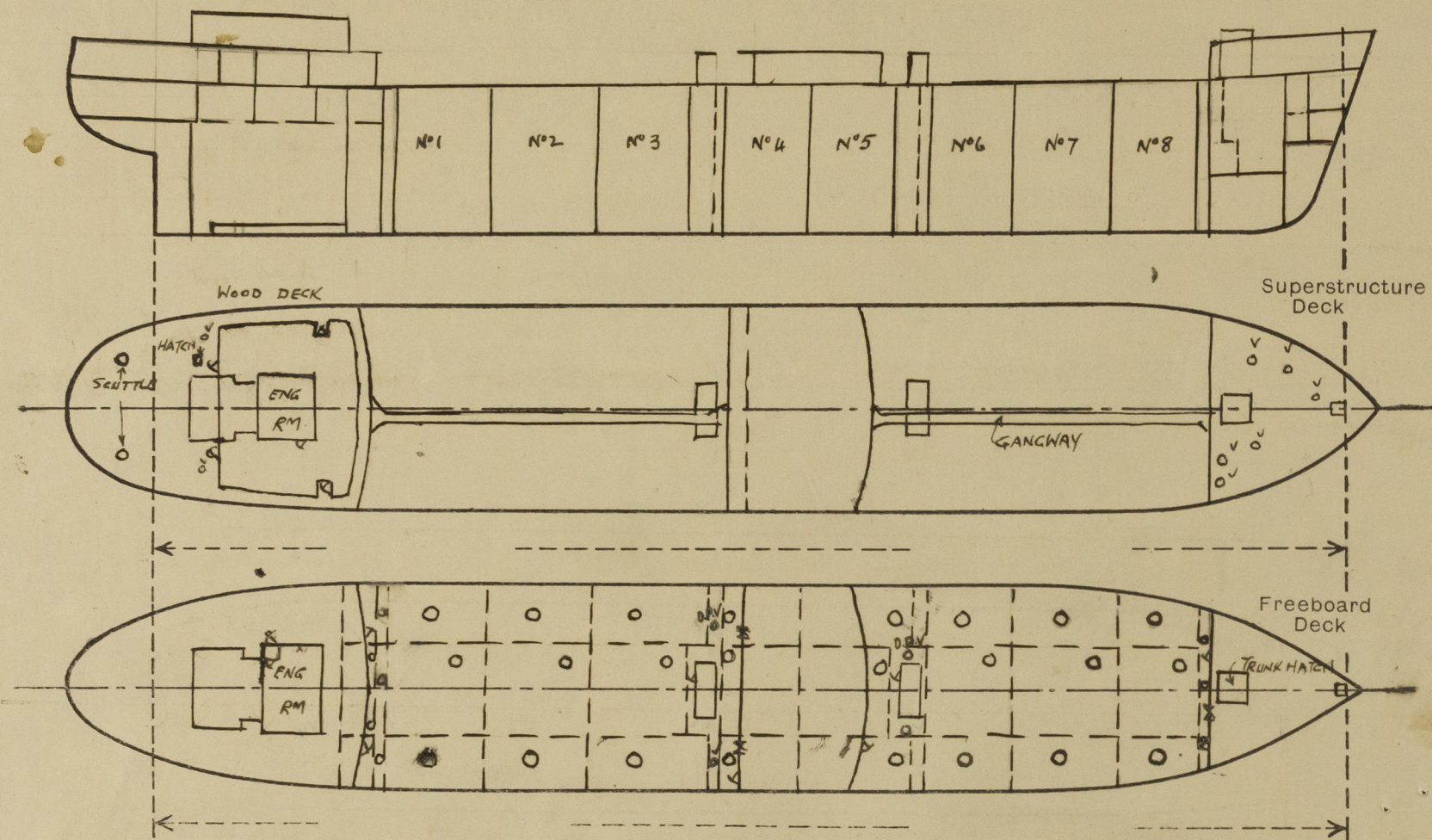
Poop Bulkhead ...	Hinged steel w.t. doors, manipulated both sides ✓
Raised Quarter Deck Bulkhead ...	
Bridge, After Bulkhead ...	Hinged steel w.t. door manipulated both side, T.O. closed by steel plates secured by hookbolts ✓
Bridge, Forward Bulkhead ...	Hinged steel w.t. door manipulated both sides ✓
Forecastle Bulkhead ...	Hinged steel w.t. door manipulated both sides, T.O. closed by steel plates secured by hookbolts ✓
Exposed Machinery Casings on Freeboard or Raised Quarter Decks ...	
Exposed Machinery Casings on Superstructure Decks ...	
Machinery Casings within Superstructures fitted with Class I Closing Appliances ...	Hinged steel w.t. doors manipulated both sides ✓
PUMP ROOMS	
Deckhouses on Flush Deck Ships ...	Hinged steel w.t. doors, manipulated both sides ✓

Particulars of Gangway Cargo and Coaling Ports :—

NONE

Laticus.

Particulars of Scuppers and Sanitary Discharge Pipes :—



Particulars of Scuppers and Sanitary Discharge Pipes:— Sanitary discharges from midship accommodation discharge overboard above freeboard deck & are fitted with storm valves at ships side. Discharges from after accommodation discharge overboard below freeboard deck & are fitted with storm valves at ships side. Scuppers from poop deck discharge overboard below freeboard deck, no storm valves at ships side. Drain holes in bridge after bhd & fiddle bhd & Br. bhd fitted with screw plugs attached by chains. There are 6-6'x2" Scuppers PS thro' stinger angle also pipe Scuppers fitted at poop & bridge ends thro' stinger & sheerstrake.

Particulars of Side Scuttles :—

There are no side scuttles below freeboard
There are 9" & 12" dia side scuttles fitted in Bridge & poop spaces, all fitted with strongly constructed deadlights.

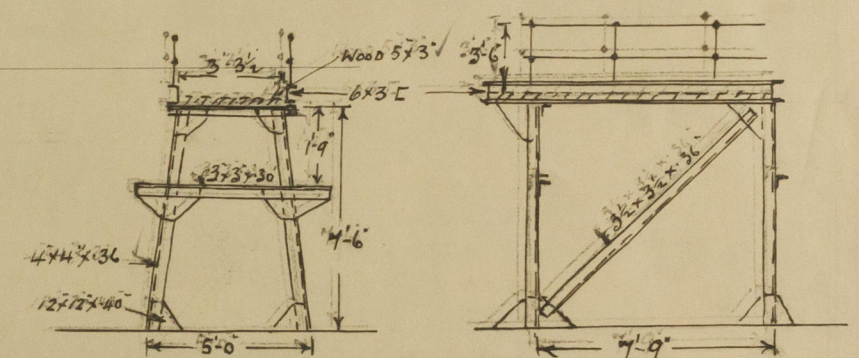
Vertical distance of Sill of lowest Side Scuttle above top of keel.

Particulars of Guard Rails :—

Fiscle deck	3'-6"	high	-	3 rods
upper deck FRA	3'-6"		-	3 rods
poop	3'-9"		-	3 rods
Bridge	3'-6"		-	3 rods

Particulars of Gangways, Lifelines, etc. :—

Particulars of Gangways, Lifelines, etc. :-
 FSA gangway from poop to Bridge & from
 Bridge to Iscle. Stanchions 3'-6" above wood
 with 2 rods all as per approved plans.



Particulars of fiddley, funnel and ventilator coamings, engine room skylight and other openings in machinery casing tops and their means of closing:—

Engine Room & pump Rm. skylights strongly constructed of steel with hinged flaps
Funnel & vents on casing top strongly constructed
Lidddy grating openings closed by strongly constructed hinged steel covers

Particulars of Flush Bunker Scuttles :—

Particulars of Companionways:— Entrance to main pump rooms is thro' doorway in steel casing strongly constructed, size of opening 4'-0" x 2'-3", sill 24", w.t. doors manipulated both sides. Entrance to auxiliary pump Room. Entrance to auxiliary pump Room is thro' doorway in plate front and. size of opening 4'-0" x 2'-0", sill 24", w.t. door manipulated both sides. Entrance to house on poop deck is thro' doorway in steel casing, size of openings 4'-6" x 2'-0", sill 1'-6", wood doors operated both sides.

Particulars of Ventilators in exposed positions on freeboard and superstructure decks :—

1-12 DIA Vent Cmg 3'-0" X 34 "N F'SOLE DECK ✓
5-10 " " 3'-0" X 32 " " " ✓
2-10 " " 2'-3" X 35 " POOP DECK ✓
6-6 " " 2'-6" X 34 " " " ✓
4-24 D.P. Vents 40 THK Suitably stayed. ✓

There are a number of 5" dia gooseneck vents on poop str 2'-6" to opening ✓

Vent Coamings closed by steel gas tight covers & canvas covers or wood plugs & canvas covers.

Particulars of Air Pipes in exposed positions on freeboard, raised quarter, or superstructure decks :—

1-4"	Dia.	air pipe	to fore peak tank	on side deck	2'-6" b opening	
2-4"	"	"	keel tank	"	"	
2-3'	"	"	Cofferdam fwd	upper deck	2'-0" above floor & supported	✓
4-3	"	"	w/o.f. aft	"	"	
2-4"	"	"	D.B. O.F.	Poop	2'-4" DK	
1-2 1/2	"	"	AFT Comp	"	"	
3-3"	"	"	LUB. oil	"	"	
2-2	"	"	Coff - settling tanks	"	"	
2-3 1/2	"	"	lub oil drain tanks	"	"	
7-3"	"	"	aft peak & FW tanks	"	"	

air pipes to tanks of mushroom type fitted with gauge other air pipes S.N. type
air pipes fitted with wire gauge fitted with Canvas covers. S.N. type wood plugs & Canvas covers

Particulars of Freeing Arrangements.						
	Length of Bulwark	Height of Bulwark	Size of Freeing Ports	Number each side	Area each side	Rule area each side
After Well	64'	3'-6"	3'-0" x 1'-25"	3.	10.25 sq ft + 59' OPEN RAIL 3.147	LEAST THAN ACTUAL
Forward Well	53'	3'-6"	3'-0" x 1'-25"	1.	+ 66.33' OPEN RAIL	

State position of each freeing port { After Well :—
(F. and A. position and height above deck edge) { Forward Well :—

State whether the freeing ports are fitted with shutters, bars, or rails, and give particulars of such :—
1 HORIZONTAL BAR

Additional area where sheer is less than standard.

Diagram illustrating the freeing ports for the After Well, Bridge, and Forward Well. The diagrams show the bulwark height (14'0" for After Well, 50'0" for Bridge, 14'0" for Forward Well) and the freeing port dimensions (3'-0" x 1'-3" for After Well, 3'-0" x 1'-3" for Bridge, 3'-0" x 1'-3" for Forward Well). The diagrams also show the open rail dimensions (14" for After Well, 15'-9" for Bridge, 14" for Forward Well).

© 2020

Lloyd's Register
Foundation

PARTICULARS OF PROTECTION TO OPENINGS, ETC.

HATCHWAYS ON FREEBOARD AND SUPERSTRUCTURE DECKS.									
Description of Hatchway	CARGO HATCH ON F'SCLE	MAIN CARGO OILTIGHT HATCHES	SMALL HATCH ON F'SCLE	SMALL HATCH UNDER F'SCLE	HATCH ON POOP	SCUTTLES ON POOP	TO COFFERDAM & OIL FUEL BUNKERS
Dimensions of Hatchway	8'-0" x 8'-0"	4'-0" DIAM	1'-8" x 1'-3"	2'-6" x 2'-6"	3'-0" x 3'-0"	15" DIA.	2'-0" x 1'-7"
COAMINGS	Height above Deck	...	30"	10"	4"	8 x 3 1/2 x 4 1/2	6"	5"	6 x 3 1/2 x 4 1/2
	Thickness	{ Sides	4 1/4	4 1/4	50	ANGLE	45	50	INVERTED
	Stiffeners	{ Ends	3 x 3 x 3/4	CIRCULAR					ANGLE WELDED
	Brackets, Stays	...	T&E TO CMG. VERTICAL						T&E TO DK
HATCH BEAMS	Number	...							
	Spacing	...							
	Scantling and Sketch	...							
	Bearing Surface	...	✓						
FORE AND AFTERS	Number	...							
	Spacing	...							
	Unsupported Lengths	...							
	Scantling* and Sketch	...	✓						
HATCH COVERS	Material	...	HINGED STEEL W.T.	HINGED STEEL O.T.	HINGED STEEL W.T.	DO	DO	HINGED STEEL W.T.	OILTIGHT BOLTED COVERS
	Thickness	...	COVER 42	COVER 40	COVER 50			COVER	
	How fitted	...	WITH 4 x 2 1/2 x 3 1/2	SECURED BY TURNBUCKLES	SECURED BY TURNBUCKLES			SECURED BY STRONGBACK	
	Bearing Surface	...	SECURED BY TURNBUCKLES 20" APART						
Spacing of Cleats	19" APART						
Number of Tarpaulins							

*Are wood fore and afters steel shod at all bearing surfaces?
 Are battens and wedges efficient and in good condition?
 Are tarpaulins in good condition and in accordance with rule requirements?
 Are lashings provided in accordance with rule requirements?

Particulars of any special features:—

DRAFT	DISP.	T.P.I.
26'-7"	13520	47.57
25'-7"	12953	47.21
24'-7"	12390	46.86

Strongly constructed steel casing in the doorway in steel casing
 strongly constructed steel casing in the doorway in steel casing
 strongly constructed steel casing in the doorway in steel casing

1. 2. 3. 4. 5. 6. 7. 8. 9. 10. 11. 12. 13. 14. 15. 16. 17. 18. 19. 20. 21. 22. 23. 24. 25. 26. 27. 28. 29. 30. 31. 32. 33. 34. 35. 36. 37. 38. 39. 40. 41. 42. 43. 44. 45. 46. 47. 48. 49. 50. 51. 52. 53. 54. 55. 56. 57. 58. 59. 60. 61. 62. 63. 64. 65. 66. 67. 68. 69. 70. 71. 72. 73. 74. 75. 76. 77. 78. 79. 80. 81. 82. 83. 84. 85. 86. 87. 88. 89. 90. 91. 92. 93. 94. 95. 96. 97. 98. 99. 100.

Strongly constructed steel casing in the doorway in steel casing

Strongly constructed steel casing in the doorway in steel casing

Strongly constructed steel casing in the doorway in steel casing

Strongly constructed steel casing in the doorway in steel casing

Strongly constructed steel casing in the doorway in steel casing

Strongly constructed steel casing in the doorway in steel casing

Strongly constructed steel casing in the doorway in steel casing

Strongly constructed steel casing in the doorway in steel casing



© 2020

Lloyd's Register Foundation