

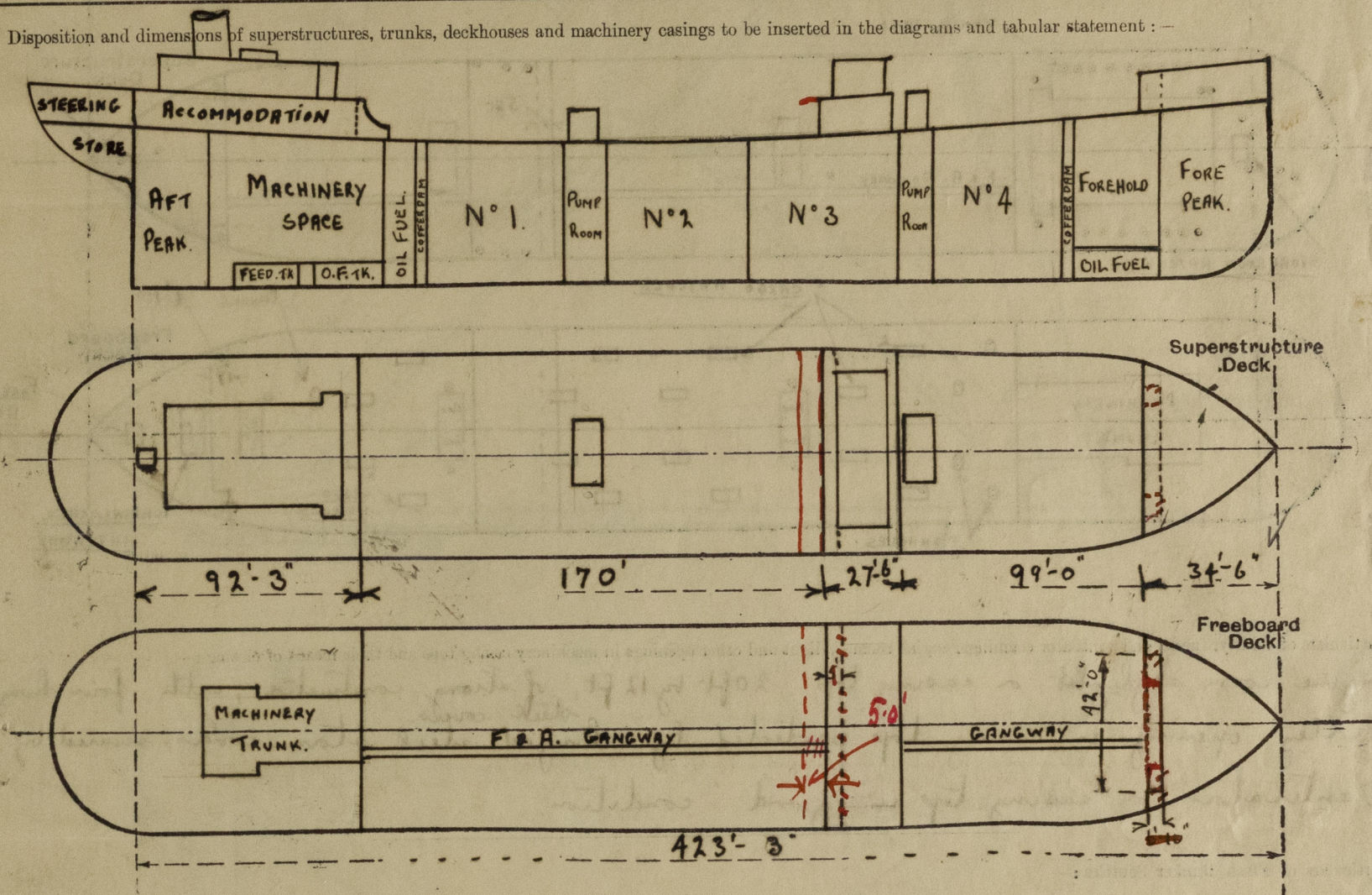
Lloyd's Register of Shipping.

SURVEYS FOR FREEBOARD.

(CONDITIONS OF ASSIGNMENT.)

Ship's Name **T.S.M.V. "FJORDAAS"** Port of Survey **HULL**
 Official Number **1059** Surveyor's Signature **John Douglas**
 Nationality and Port of Registry **NORWEGIAN. ARENDAL.** Date of Survey **10th 2 12th NOVEMBER. 1941.**

Disposition and dimensions of superstructures, trunks, deckhouses and machinery casings to be inserted in the diagrams and tabular statement:—



Particulars of Superstructures, Trunks, Casings, Deckhouses.

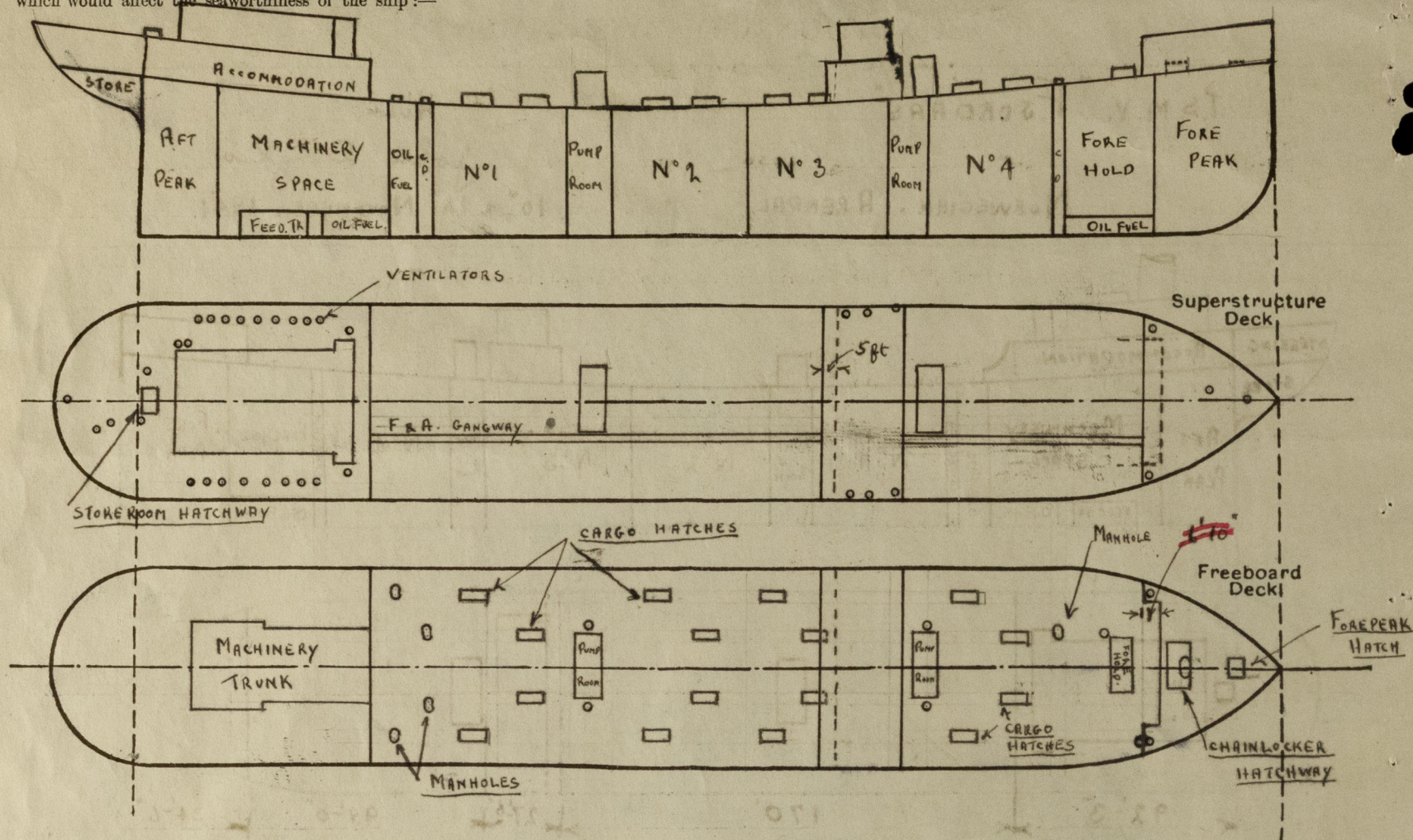
	Coaming	Plating	Stiffeners	Spacing	End Attachments of Stiffeners	Size of Openings	Height of Sills	Height of Casings
Poop Bulkhead ...	3/8"	5/16"	9 x 3 1/2", 1/2" B.A.	28" x 32"	BRACKETS 22" x 19 1/2"	NONE.	✓	7'-6 1/2"
Raised Quarter Deck Bulkhead ...	✓	✓	✓	✓	✓	✓	✓	✓
Bridge, After Bulkhead ...	3/8"	5/16"	8 x 4 x 1/2" B.A.	28"	BKTS. 18" x 18 3/8" L Lugs 5" x 3 3/8"	5' x 4'	19"	7'-8"
Bridge, Forward Bulkhead ...	3/8"	5/16"	8 x 4 x 1/2" B.A.	28"	DO.	NONE	✓	7'-8"
Forecastle Bulkhead ...	3/8"	5/16"	8 x 5 x 1/2" B.A.	30"	BRACKETS 18" x 18 3/8"	5' by 4'-6"	17"	8'-2"
Trunk, Aft ... PUMP ROOM.	✓	5/16"	4 x 3 x 3/8" L	30"	6 x 3 x 3/8" L Lugs	5'-4 x 2'	15"	7'-8"
Trunk, Forward ... PUMP ROOM.	✓	5/16"	4 x 3 x 3/8" L	30"	do.	5' x 2'	15"	7'-8"
Exposed Machinery Casings on Freeboard or Raised Quarter Decks ...	✓	✓	✓	✓	✓	✓	✓	✓
Exposed Machinery Casings on Superstructure Decks ...	3/8"	5/16"	4 1/2 x 2 1/2 x 5/16" L	30"	15 x 12 x 3/8" BKT.	5'-5' x 2'	15"	7'-6 1/2"
Machinery Casings within Superstructures not fitted with Class I Closing Appliances ...	3/8"	3/8"	do.	30"	do.	5'-5' x 2'	17"	7'-6 1/2"
Deckhouses on Flush Deck Ships ...								

Particulars of Closing Appliances (state if capable of being manipulated from both sides).

Poop Bulkhead ...	NONE openings
Raised Quarter Deck Bulkhead ...	✓
Bridge, After Bulkhead ...	PORTABLE 5/16" STEEL PLATES (IN TWO SECTIONS) SECURED BY HOOK BOLTS. OPERATED ONLY FROM OUTSIDE.
Bridge, Forward Bulkhead ...	NONE openings
Forecastle Bulkhead ...	5/16" PORTABLE STEEL PLATES (IN TWO SECTIONS) SECURED BY HOOK BOLTS.
Exposed Machinery Casings on Freeboard or Raised Quarter Decks ...	5' x 2' W.T. STEEL DOOR (PORTSIDE ONLY) SECURED BY LUGS. OPERATED FROM BOTH SIDES.
Exposed Machinery Casings on Superstructure Decks ...	STEEL AND WOOD DOORS, SPRING LOCKS, CAPABLE OF OPERATION FROM BOTH SIDES TO E.R. To accommodation
Machinery Casings within Superstructures not fitted with Class I Closing Appliances ...	STEEL DOORS, SPRING LOCKS, CAPABLE OF OPERATION FROM BOTH SIDES.
Deckhouses on Flush Deck Ships ...	STEEL DOORS, SPRING LOCKS, " " " " " "

PARTICULARS OF PROTECTION, TO OPENINGS, ETC.

The following diagrams should be used to indicate the positions of cargo and coaling hatchways, gangway, cargo and coaling ports, ventilators, companionways, etc., which would affect the seaworthiness of the ship:—



Particulars of fiddley, funnel and ventilator coamings, engine room skylight and other openings in machinery casing tops and their means of closing :—

Engine room highlighted on casing top, 20ft by 12 ft, of strong construction, with four hinged Fidley opening in casing top protected by hinged steel storm covers, secured by butterfly nuts. Ventilators on casing top in good condition. ✓

Particulars of Flush Bunker Scuttles:—

NONE.

Particulars of Companionways :—

NONE

Particulars of Ventilators in exposed positions on freeboard and superstructure decks :—

Particulars of ventilators in exposed positions on freeboard and superstructure decks:—

One 9" DIA VENT. TO FOREPEAK STORE	One 9" DIA VENT. TO FORECASTLE SPACE	COMINGS 3FT high	$\frac{5}{16}$ " THICK.	} FORECASTLE HEAD.
Two 7" DIA. VENTS TO FORECASTLE SIDE SPACES	"	3FT "	$\frac{5}{16}$ " "	

Two 7 DIA. VENT. TO FORECASTLE SIDE SPACES " 3 FT
FOREDECK ONE TO FOREHOLD (SS.F) 15" DIA CORNING 12 ft x 3/8" ATTACHED TO FORECASTLE FRONT.
 ONE TO FOREHOLD (P.S) 15" " 3 ft x 3/8"
 TWO TO PUMPROOM 15" " 12 ft. x 3/8" STAYED TO PUMPROOM.

BRIDGE DECK TWO TO ACCOMMODATION 8' " 3 ft. x 5/16

AFT. DECK	TOOK	"	"	6	"	"	3.6 x 1/8	ATTACHED TO STEWARDS
	WENT	TO	PUMPROOM	15'	"	"	12 ft x 3/8	STAYED TO PUMPROOM.

Pop. Seventeen 10 ACCOMMODATION 6 " " 3 FT " 11/16
 Two 80. ACCOMM 8 " " 3 FT " 5/16

Two	"	"	1 1/2	"	"	3 1/2	"	18
One	"	"	3	"	"	3 1/4	"	9 1/2

ONE	TO	STORE ROOM.	8"	"	"	3 1/4"	1/16"
Two	TO	STEERING ENGINE.	12"	"	"	3 1/4"	3/8"

SEVERAL CAST GOOSENECK VENTS TO ACCOMMODATION. ✓

✓ ventilation a

FORECASTLE HEAD ONE TO FOREPEAK, 18" HIGH 3" DIA. PROTECTED BY BOW CHOCK, *steel cap or*

FORE DECK	Two	"	"	"	18'	"	2 1/2	"	"	"
	Two	"	"	"	18'	"	2 1/2	"	"	"

AFT DECK

Dash Two " " BRT ^ 3 1/2
E-10 " DA TV 12" 2"

FOVA	"	DB. EXPANS. TK.	12"	x	32"	"	"	"
FOVA	"	LVB OIL TK.	12"	x	28"	"	"	"

Two	FEED-TANKS	12'	12'
-----	------------	-----	-----

ONE " AFT PEAK. 12" 3"

Closing appliance

✓ Ventilators and
air pipes fitted with
steel caps or wood plugs
and canvas covers.

Closing appliances

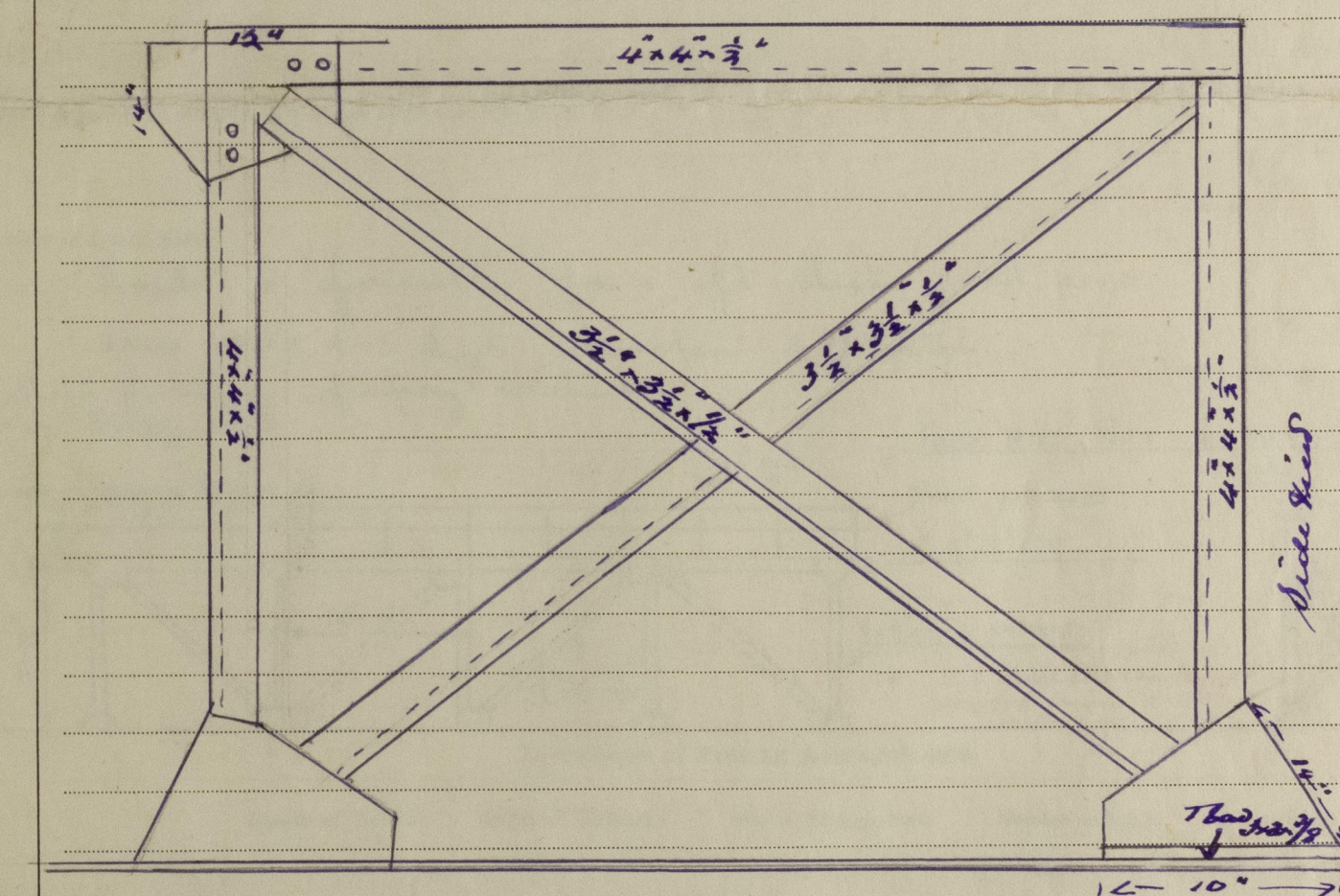
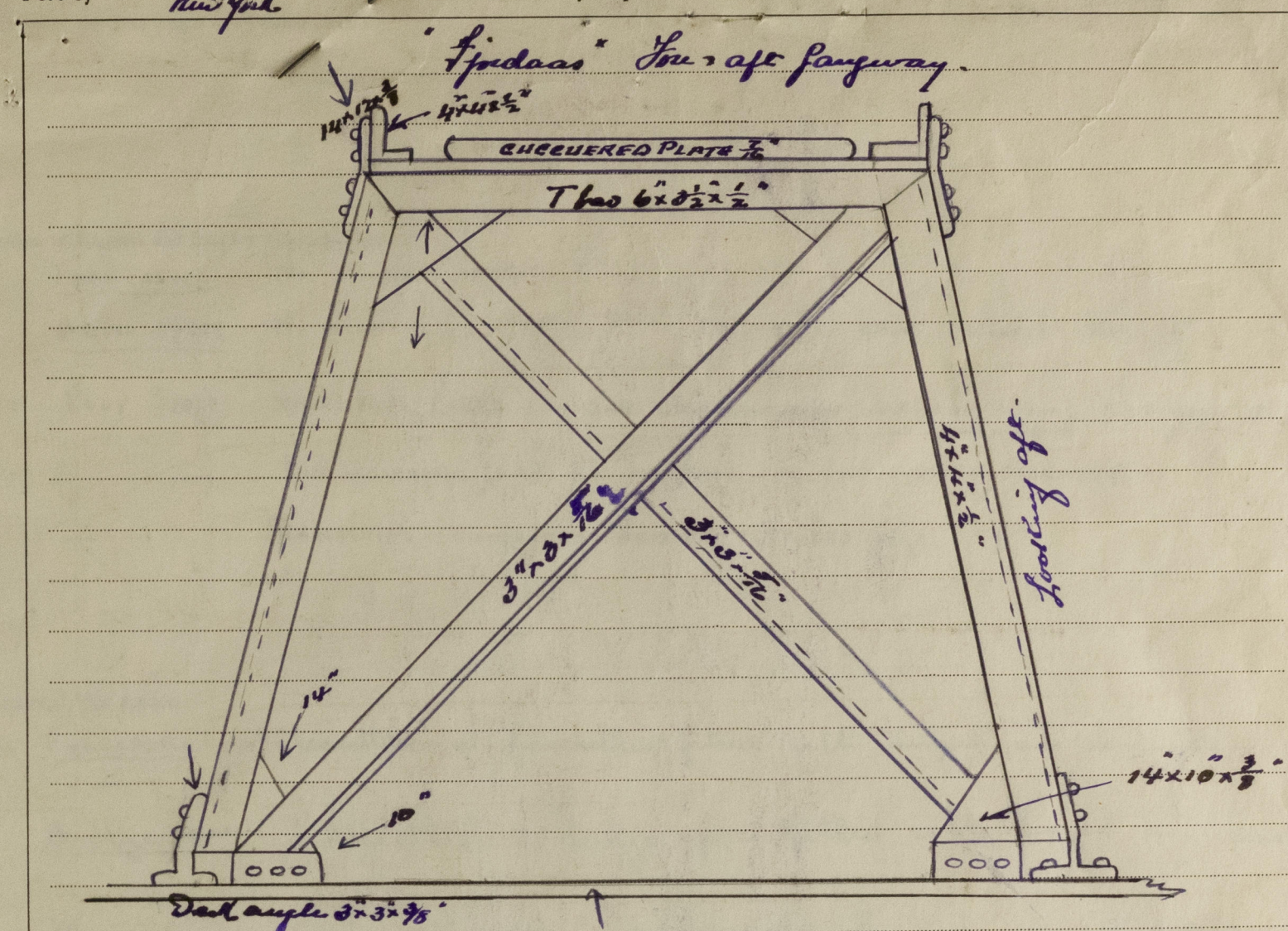
Rpt. 9a.

Port of

Continuation of Report No.

dated

on the



All Ventilators & air pipes are fitted with steel caps or wood plugs and canvas covers.

9.3. January 1942

Particulars of Gangway Cargo and Coaling Ports:—

NONE

Particulars of Scuppers and Sanitary Discharge Pipes:—

FORECASTLE No SCUPPERS FITTED. ✓

BRIDGE SPACE No SCUPPERS FITTED. ALL DISCHARGES ABOVE FREEBOARD DECK. ✓

POOP SPACE No SCUPPERS FITTED. ONE LAVATORY (STBD SIDE. ENG. ACCOMM) 1" DIA WASTE PIPE FITTED WITH STORM VALVE. ✓
ONE WASHHOUSE. (SS) 2½" DIA WASTE PIPE FITTED WITH STORMVALVE.

REMAINING DISCHARGES ABOVE FREEBOARD DECK. ✓

Particulars of Side Scuttles:—

FORECASTLE Sidescuttles in forecastle fitted with hinged non deadlights ✓

BRIDGE SPACE Sidescuttles in bridge space fitted with hinged non deadlights ✓

POOP 10" dia sidescuttles, fitted with hinged non deadlights ✓

Vertical distance of Sill of lowest Side Scuttle above top of keel

Particulars of Guard Rails:—

Rails on forecastle, fore & aft decks and poop.

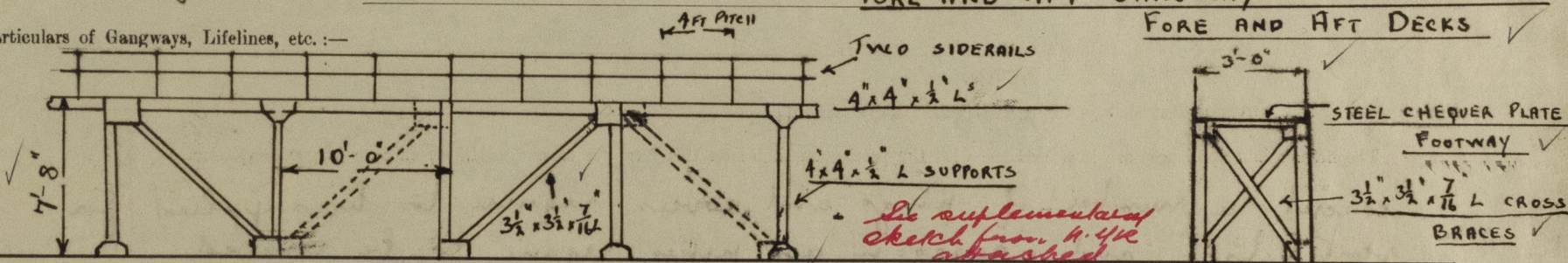
Three rails 4'-3" high. stanchions 4 ft pitch

Steel Bulwarks of strong construction on Bridge Deck. ✓

NOTE Gangways between Poop & bridge, & bridge and forecastle are similar ✓

FORE AND AFT GANGWAY FOR LENGTH OF FORE AND AFT DECKS ✓

Particulars of Gangways, Lifelines, etc.:—



Particulars of Freeing Arrangements.

	Length of Bulwark	Height of Bulwark	Size of Freeing Ports	Number each side	Area each side	Rule area each side
After Well	open rails					
Forward Well	open rails					

State position of each freeing port { After Well:—
(F. and A. position and height above deck edge) { Forward Well:—

State whether the freeing ports are fitted with shutters, bars, or rails, and give particulars of such:—

Additional area where sheer is less than standard.

PARTICULARS OF PROTECTION TO OPENINGS, ETC.

HATCHWAYS ON FREEBOARD AND SUPERSTRUCTURE DECKS.									
Description of Hatchway	FOREHOLD		CARGO TANKS		AFT STORE	FORE PEAK STORE	
Dimensions of Hatchway	11' 9" x 10' 11"		5' 10" x 3' 10"		3' 10" square	2' 11" square	
COAMINGS	{	Height above Deck	...	3 FT		3 FT		3 FT	
		Thickness	...	7/16"		7/16"		3"	
		Sides	...	7/16"		7/16"		3/8"	
		Ends	...	7/16"		7/16"		3/8"	
		Stiffeners	...	HORIZ. 8, 3/4" x 4 B.A.		HORIZ. 8, 3/4" x 4 B.A.		3/8" x 3/8" L	
		Brackets, Stays	...						
HATCH BEAMS	{	Number	...						
		Spacing	...						
		Scantling and Sketch	...						
		Bearing Surface	...						
FORE AND AFTERS	{	Number	...						
		Spacing	...						
		Unsupported Lengths	...						
		Scantling* and Sketch	...						
		Bearing Surface	...						
HATCH COVERS	{	Material	...	STEEL		STEEL		STEEL	
		Thickness	...	1/2"		1/2"		1/2"	
		How fitted	...	ATHWART		F & A			
		Bearing Surface	...						
Spacing of Cleats	✓					
Number of Tarpaulins	✓	THUMBSCREWS		THUMBSCREWS		

*Are wood fore and afters steel shod at all bearing surfaces? ✓
 Are battens and wedges efficient and in good condition? ✓
 Are tarpaulins in good condition and in accordance with rule requirements? ✓
 Are lashings provided in accordance with rule requirements? ✓

Particulars of any special features:—

Endorsement at first survey and at surveys for renewal of Certificate:—

The fittings and appliances are in accordance with the particulars shown on this form (or as now modified) and are in good condition.

except a number of plugs and covers require to be supplied for ventilators, and gauges in air pipes require to be renewed.



© 2021

Lloyd's Register Foundation