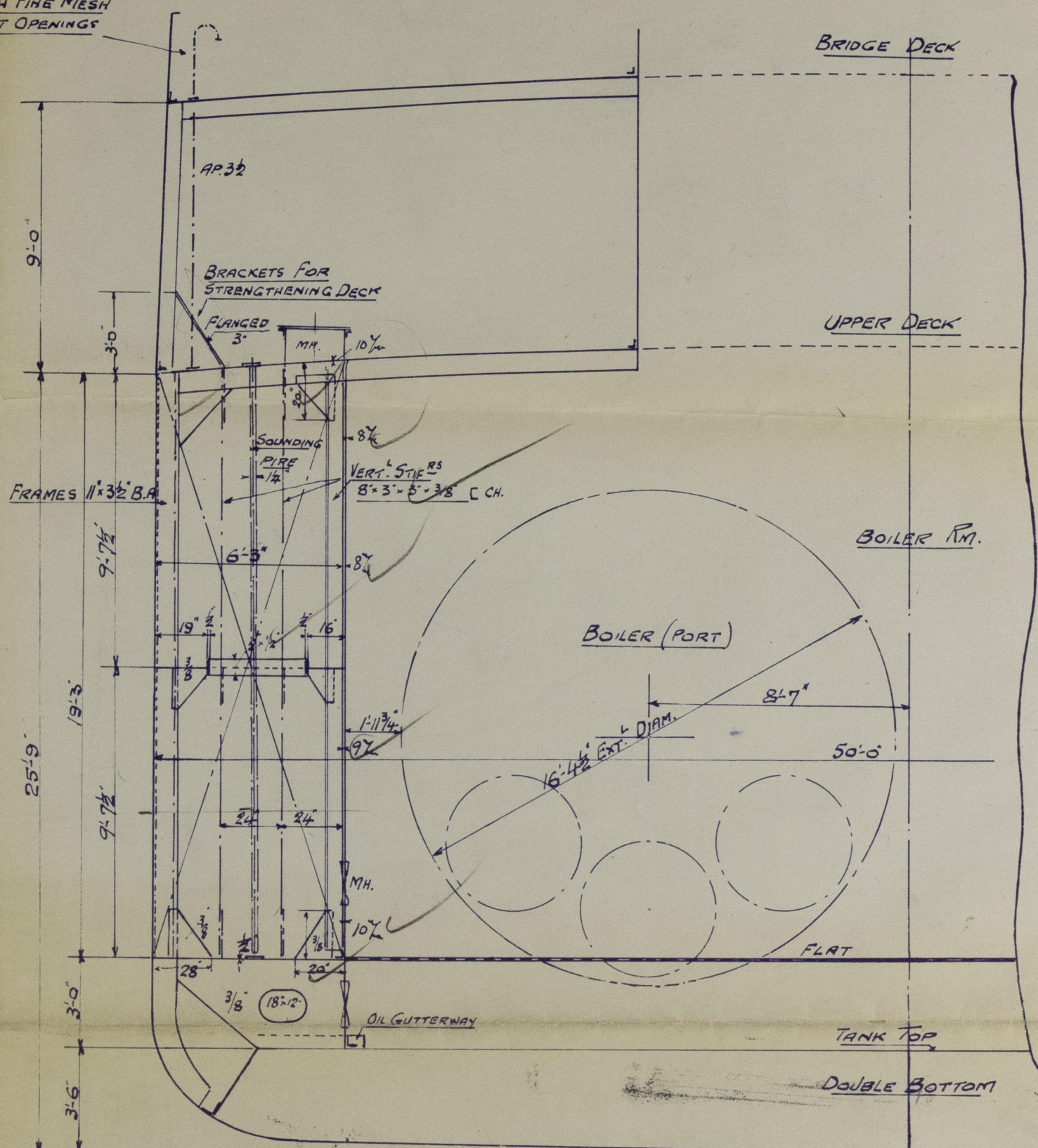
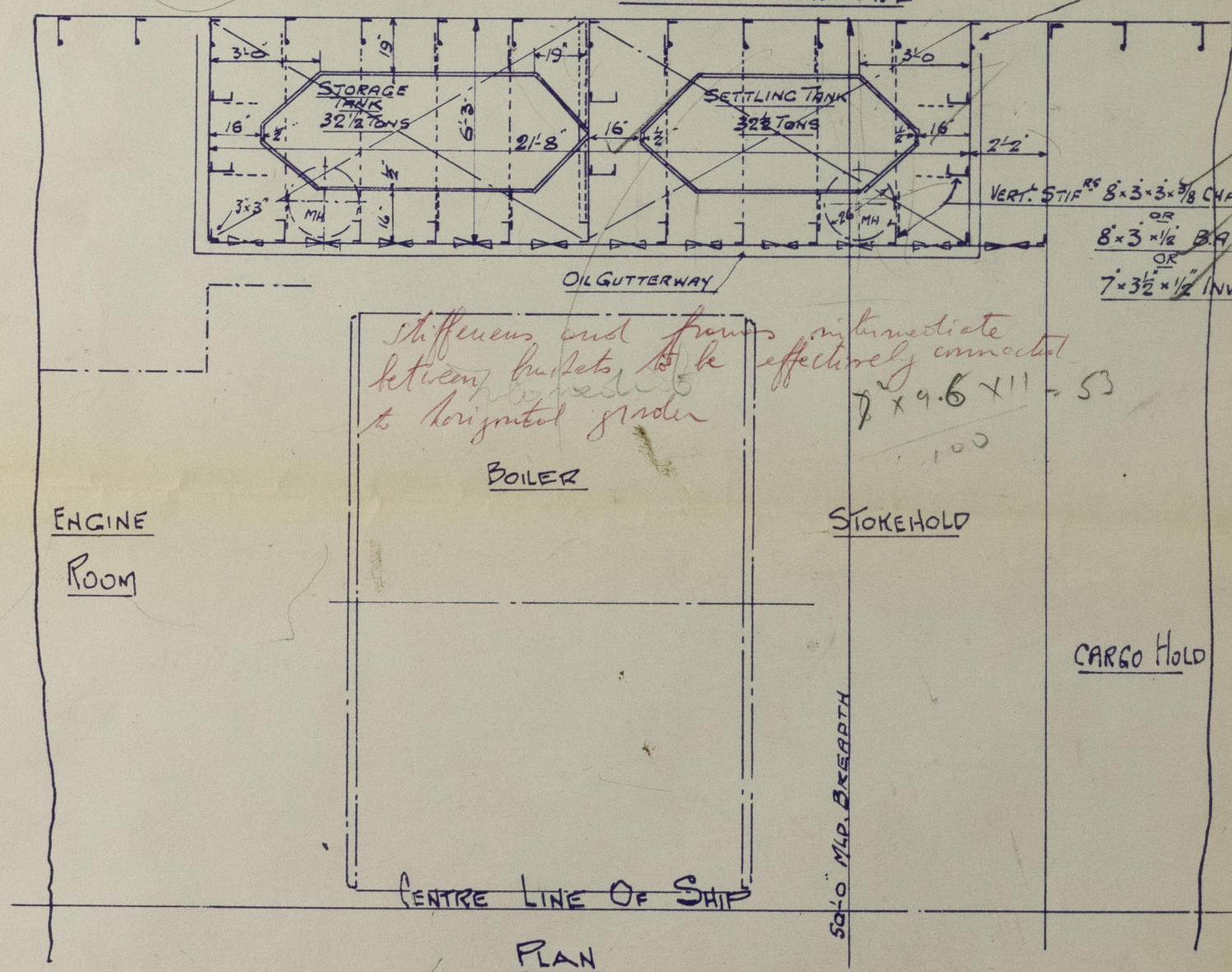


LONGITUDINAL SECTION
LOOKING TO PORT SIDE

FRAMES 11" x 3 1/2" B.A. 26" APART



TRANSVERSE SECTION LOOKING FORWARD
TANKS - PORT & STARB

$$14.35 \times \frac{26}{24} = 15.6$$

WELDED CONSTRUCTION

CAPACITY OF SETTLING TANK	PORT	32 1/2 TONS
"	STARB	32 1/2 "
"	PORT	32 1/2 "
"	STARB	32 1/2 "
TOTAL		130 TONS

Boundaries to be double riveted or equivalent

Boundaries to be double riveted or equivalent

S.S. PARCORALI Ex. S.S. BARON NAPIER

CHANGE OVER FROM COAL TO OIL BURNING
OIL FUEL STORAGE & SETTLING TANKS

SCALE 1/4" = 1 FOOT

LENGTH B.P. 350'0"
BREADTH MLD. 50'0"
DEPTH MLD. 25'9"

JOHN P. KATSOULAKOS
CONSULTING ENGINEER AND MARINE SURVEYOR

© JOHN P. KATSOULAKOS
2021
PIRAEUS, SEPT. 1957
Lloyd's Register
Foundation