

WATER BALLAST TANK IN POOP

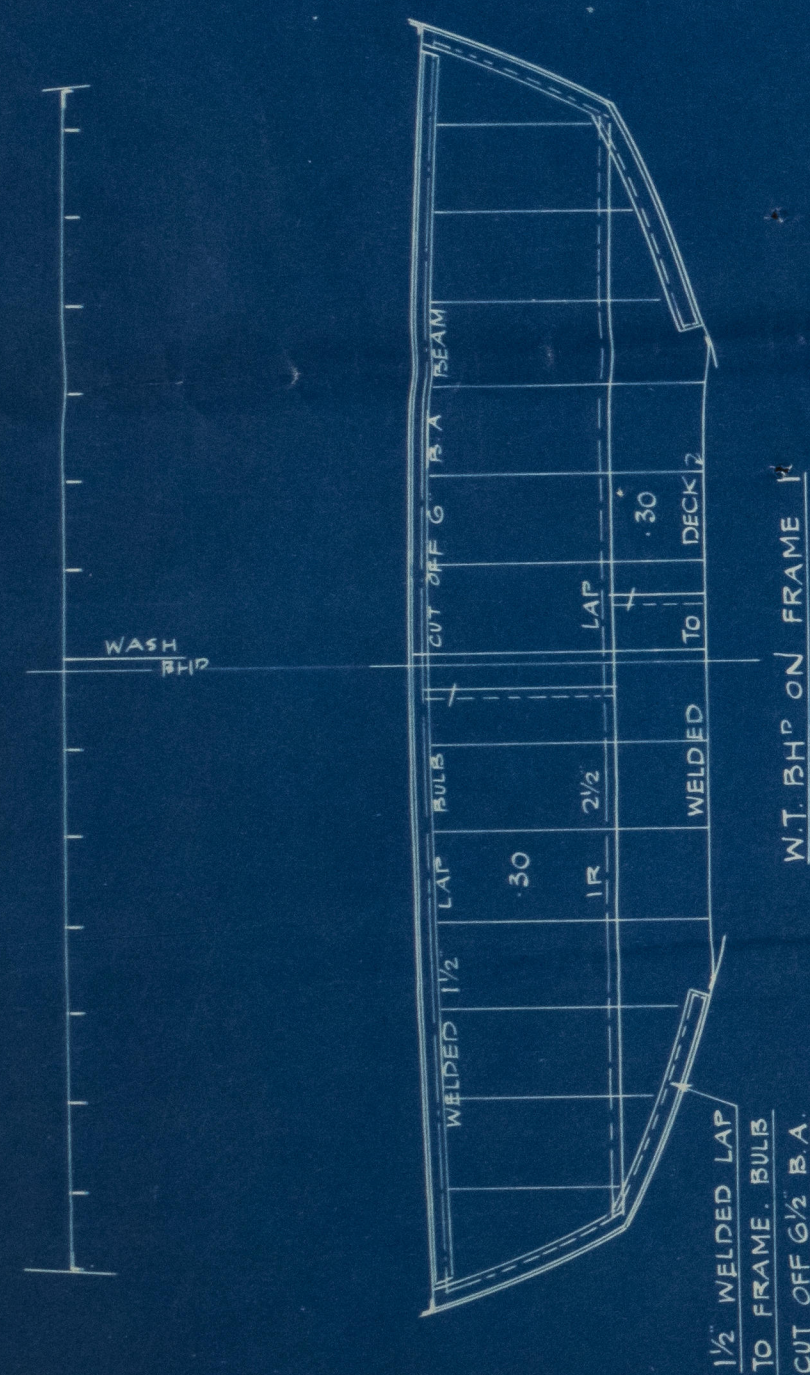
S. S. "ULMUS"

SCALE 1/4" = 1 FOOT

RIVETING NOTE - RIVETS IN SEAMS AND BUTTS OF W.T. BHPs SPACED 4 1/2 DIA CR TO CR



Rules for Electric Welding to be Complied With
Shell and deck plating of bulkhead
boundary trans to be made Watertight
to Surveyor's Satisfaction

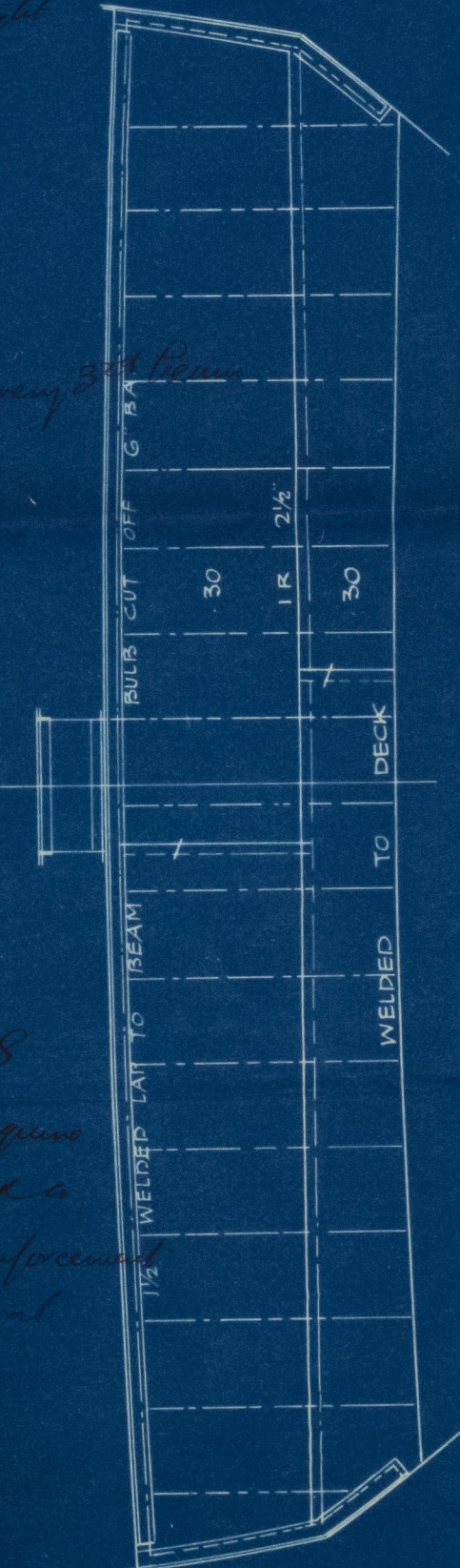


W.T. BHP ON FRAME 12
LOOKING AFT
STIFFERS 4" x 35" FLAT 24" APART
REELED TACK WELD TO BHP
Buckled top and bottom
Buckled in brackles angles
entirely to adjacent
beam in plate



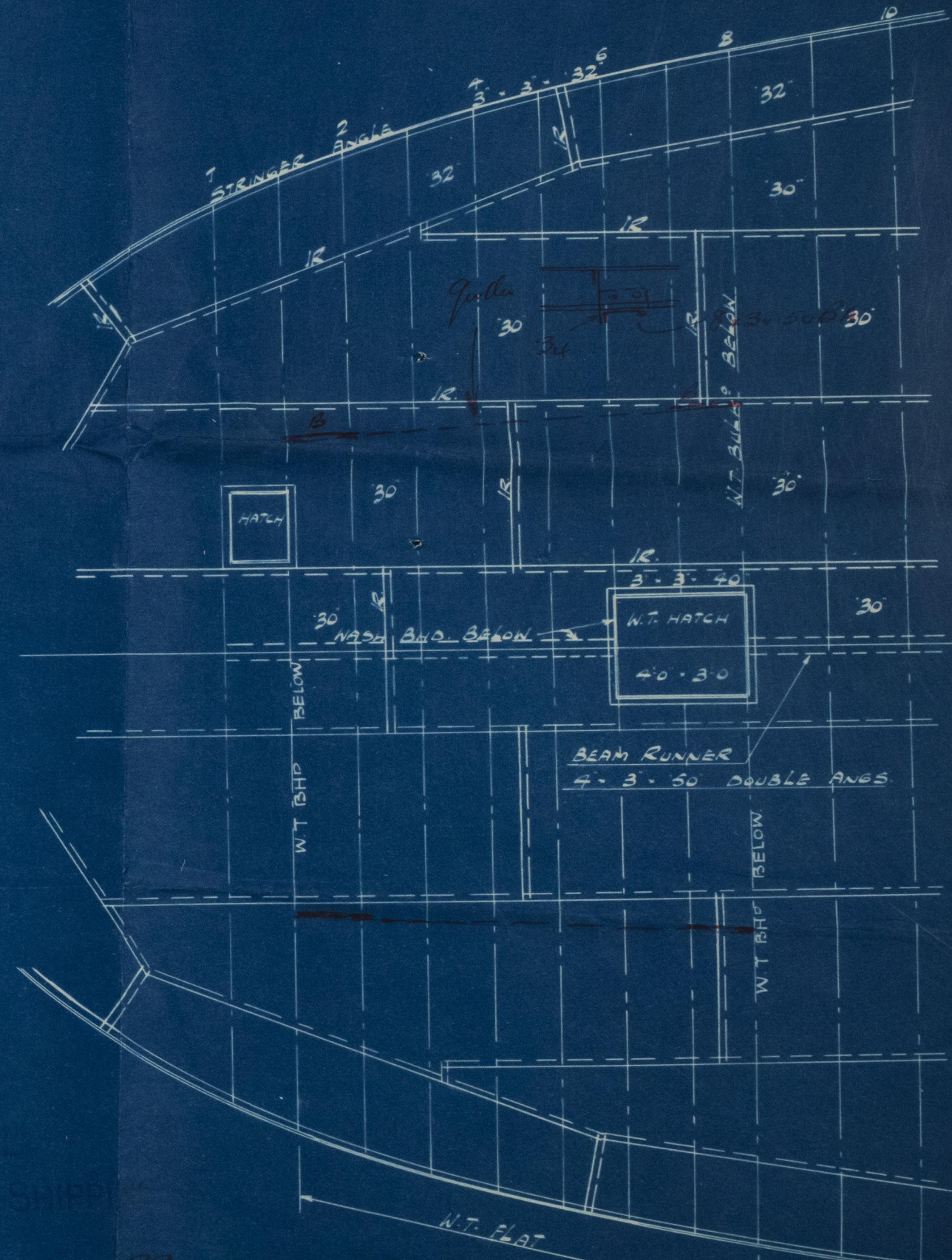
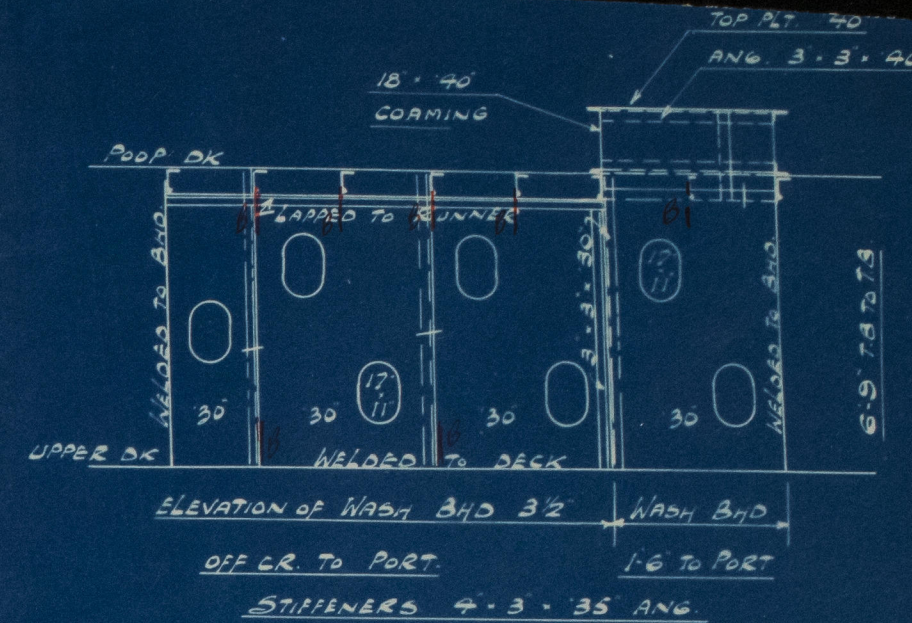
PLAN VIEW AT UPPER DK

If the upper and lower tanks may be
in communication with each other
when they are carrying water,
the Watertight bulkhead in frame 8
below the upper deck will require
to be suitably reinforced and a
plan showing the proposed reinforcement
should be submitted for approval



W.T. BHP ON FRAME 8
LOOKING AFT
STIFFERS 4" x 35" FLAT 24" APART
REELED TACK WELD TO BHP
Buckled top and bottom
Buckled in brackles angles
entirely to adjacent beam
in plate

APPROVED
LLOYD'S REGISTER OF SHIPPING
Hickson
11.12.33



24" FE SPACING 30" FE SPACING
BEAMS 6" x 3" x 34" B.A. BEAMS 6" x 3" x 32" B.A.



© 2021

Foundation

S. S. "ULMUS"

POOP BALLAST TANK.

Exh. rept. No 19682.



© 2021

Lloyd's Register
Foundation

003567-003571-0273