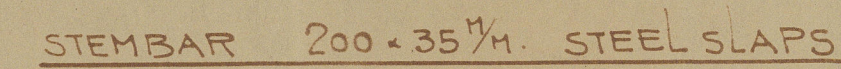


EN 2068

4	120	6	MANILLA
2	45 [✓]	12 [✓]	COBRA

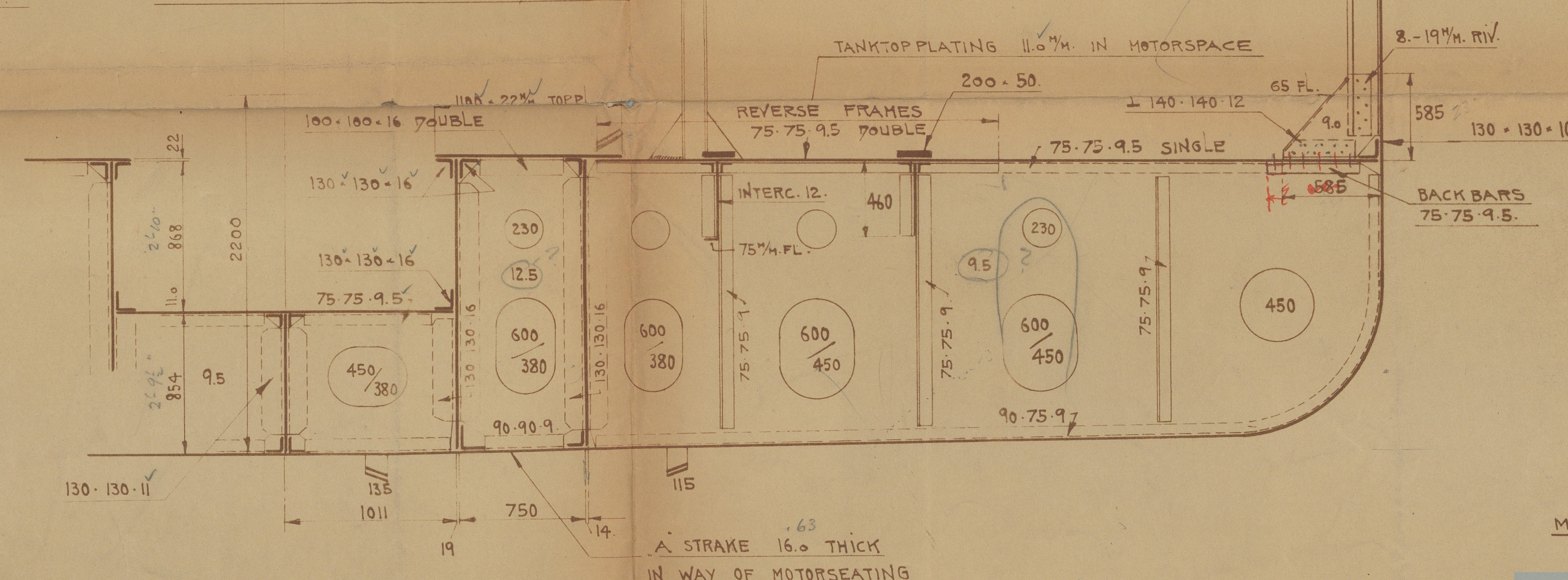
SCALE 1:25

Approved *[Signature]*
 Lie Leiter 2.8.35



CENTRE GIRDER 915 x 105 x 9" AT ENDS 105" IN MOTORSPACE
 MARGIN PLATE 710 x 105 THICKNESSES ALL FOR AND AFT MARGIN ANGLES 90 x 90 x 105
 TANKTOP CENTRE STRAKE 1200 x 105" TO 85" AT ENDS
 ——— OTHER STRAKES 915 x 105" SHIPSIDE AND 7" FORWARD TO 8.5" AFT 1 1/2" IN MOTORSPACE
 FLOOR PLATES INTERSTALS AND BRACKETS 8 1/2" TO 9 1/2" IN MOTORSPACE
 BOTTOM FRAMES ON SOLID FLOORS 75 x 75 x 8.5 TO 9.5" IN MOTORSPACE AND AT FOREND
 INTERMEDIATE FRAMES AT FOREND 150 x 75 x 8.5" AT BOTTOM
 REVERSE ANGLE SOLID FLOORS 75 x 75 x 8.5 TO 9.5" IN MOTORSPACE AND AT FOREND
 BOTTOM FRAMES AT SKELETON FLOORS [150 x 75 x 9" ?
 REVERSE FRAMES " " [140 x 65 x 8" ?
 WATERTIGHT FLOORS 105" NO STIFFENERS
 BOUNDARY ANGLES TO W.T. FLOORS 75 x 75 x 8.5"

MOTORSEATING AS PER SPECIAL DRAWING



HB/GL. © 2021 H.P.

2

Lloyd's R

2

Midship Section.

Makarov Shipy.

No 72.

2. 8. 25

T.C 28.8.25.

THYRA S



© 2021

Lloyd's Register
Foundation

003567-003571-0031

Midship Section.

Nakshat 73.

Bag.



© 2021

Lloyd's Register
Foundation

003567-003571-0031