

C.S. "OCEAN LAYER" GENERAL ARRANGEMENT

DIMENSIONS - 322'-11 1/2" x 50'-10" BUILT x 30'-4" DMLD TO UPPER DECK

SCALE 1/8" = 1 FOOT

EQUIPMENT LETTER "W"

EQUIPMENT BEING SUPPLIED:-

3 STOCKLESS BOW ANCHORS EACH 50 CWT. AS EXISTING

1 STEAM ANCHOR - 15 CWT. (EX STOCK)

270 FATHOMS OF 2 1/8" WROUGHT IRON STUD CHAIN CABLE

90 FATHOMS OF 2 1/8" STUB LINK OR SHORT LINK

WROUGHT IRON CHAIN OR (B) 4 1/2" x 6 1/2" FLEXIBLE STEEL

WIRE ROPE (FOR STEAM ANCHOR)

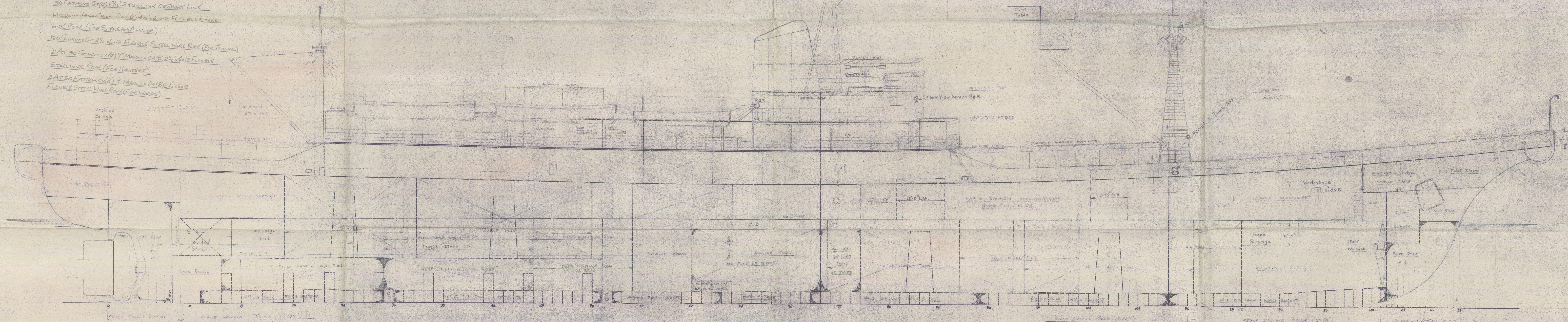
120 FATHOMS OF 4 1/2" x 6 1/2" FLEXIBLE STEEL WIRE ROPE (FOR TOWLING)

2 AT 90 FATHOMS (A) 7" MANILLA OR (B) 2 1/2" x 6 1/2" FLEXIBLE

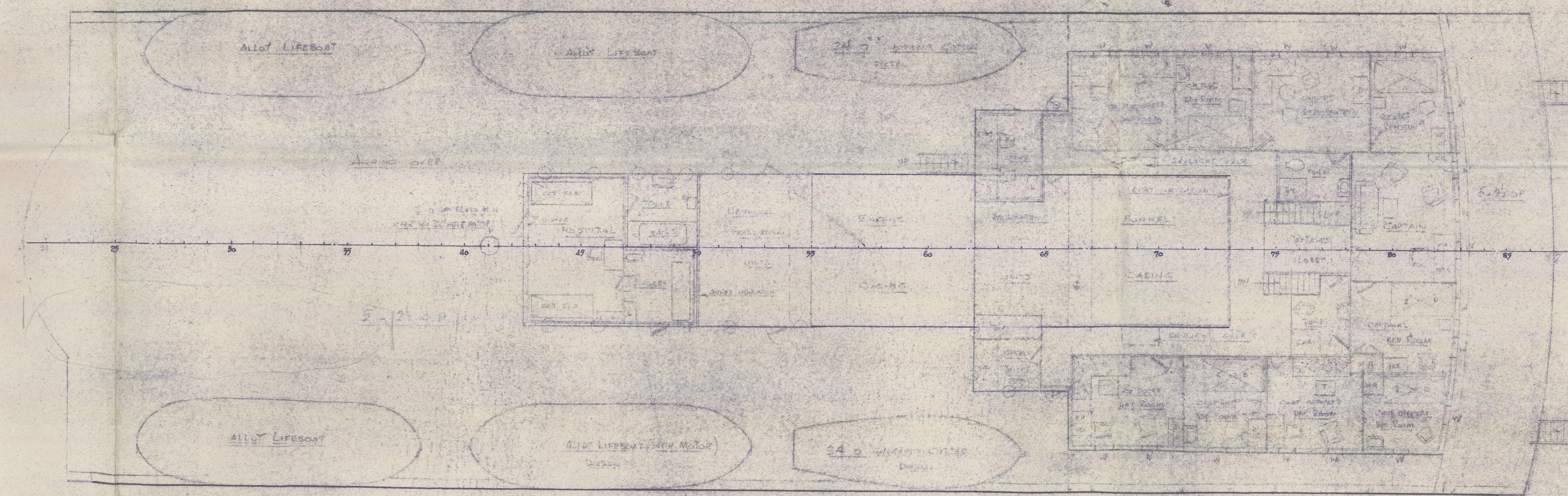
STEEL WIRE ROPE (FOR HAWKERS)

2 AT 90 FATHOMS (A) 7" MANILLA OR (B) 2 1/2" x 6 1/2"

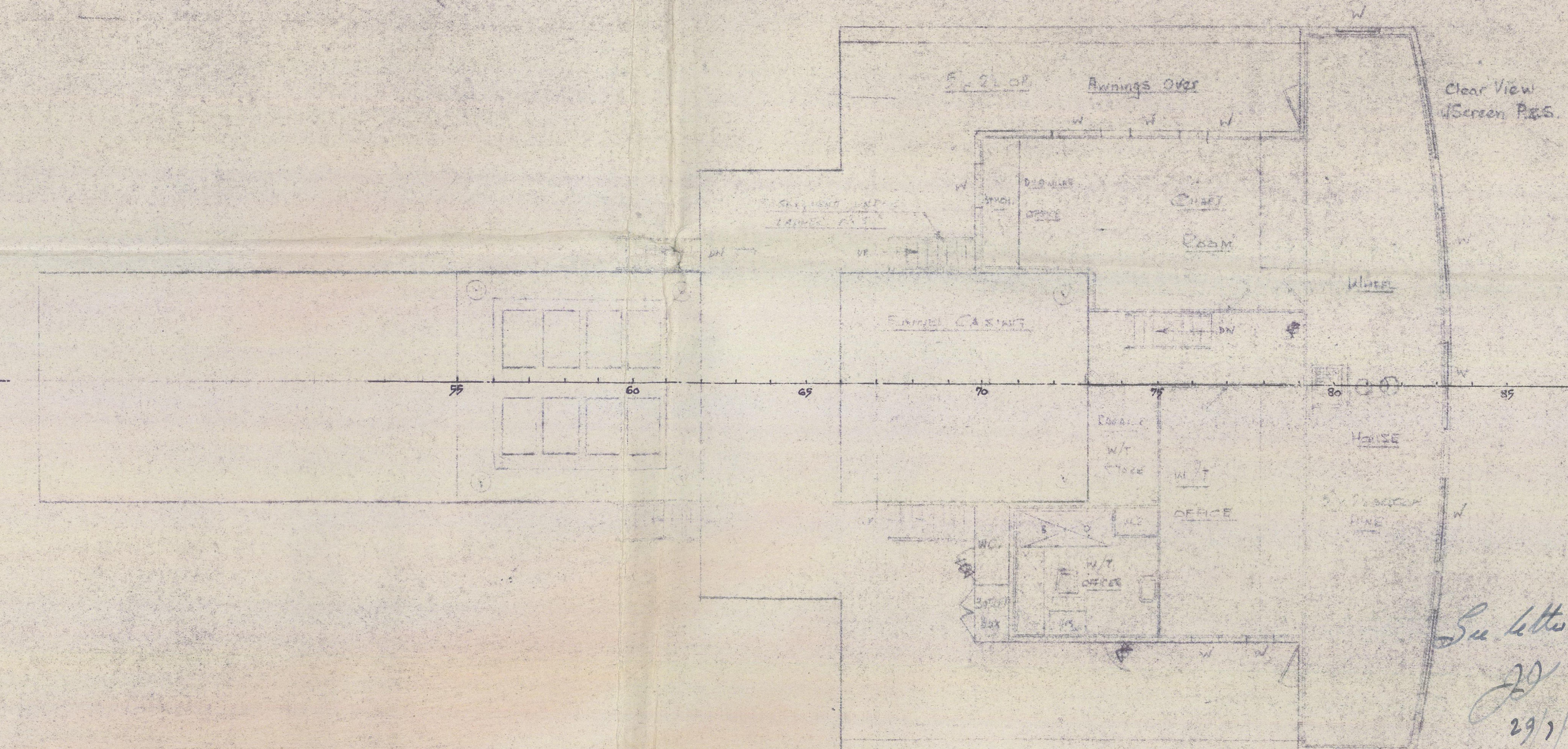
FLEXIBLE STEEL WIRE ROPE (FOR WARPS)



BRIDGE DECK



NAVIGATING BRIDGE



APPROVED
29/1/59
FOR SUBMARINE CABLES LTD.

W. HAYES (PENARBE) LTD.
DRAWING OFFICE

W. HAYES (PENARBE) LTD.
DRAWING OFFICE

203556 003566 000

S.S. "OCEAN LAYER" ★ MIL 7964

GENERAL ARRANGEMENT.

RECORDS DEPT.
LONDON. *MIL 7964.*

35

003556-003566-0003



© 2020

Lloyd's Register
Foundation