

TRANSVERSE FRAMES (SHIPSIDE)

FRAME NO. COUNTED FROM FOREWARD	TANK 1 PS	TANK 1 SB	TANK 2 PS	TANK 2 SB	TANK 3 PS	TANK 3 SB
1						
2						
3						
4						
5						
6						
7						
8						
9						
10						
11						
12						
13						
14						
15						
16						
17						
18						
19						
20						
21						
22						
23						
24						
25						
26						
27						
28						

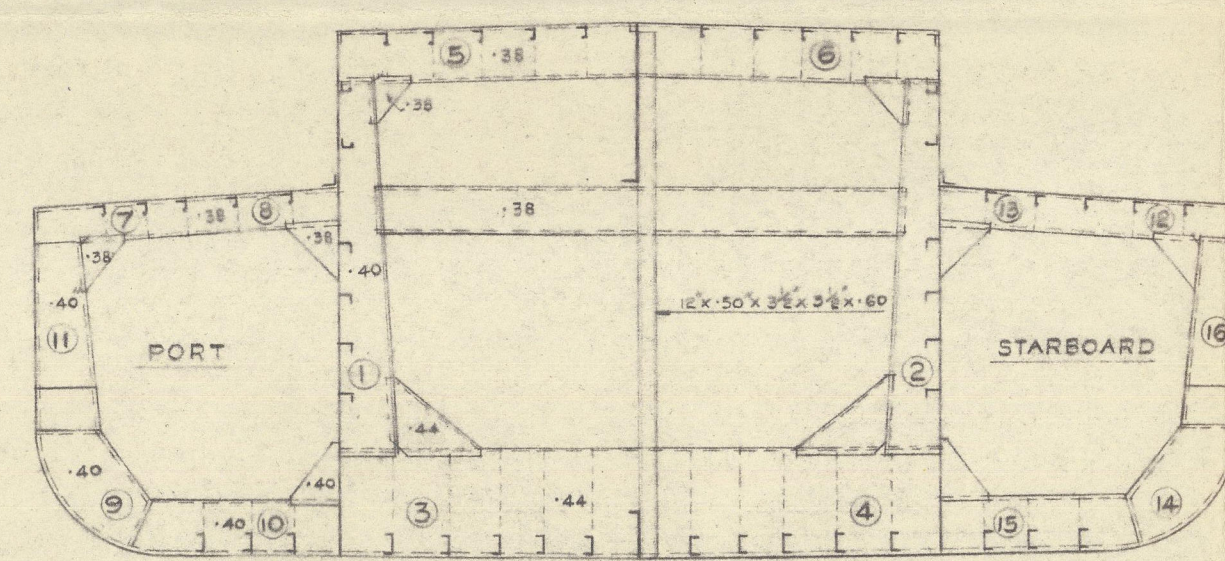
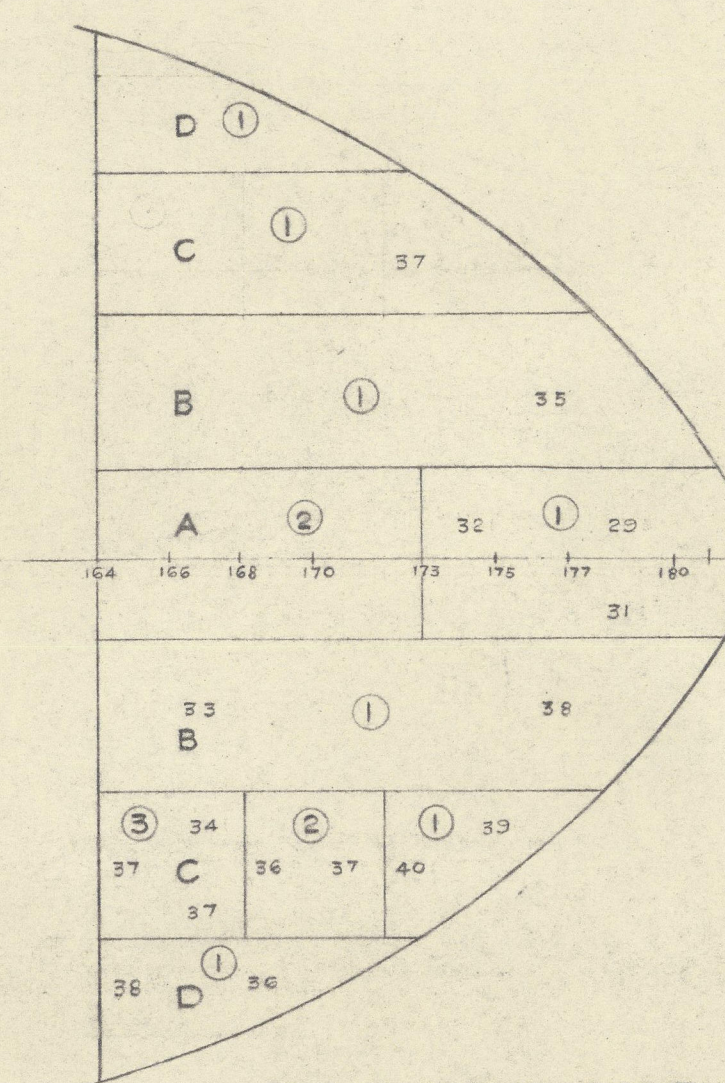
LONGITUDINALS - WING TANKS

TANKS	1	2	3	4	5	6	7	8
TANK 1 PORT	31	22	28	24	24	30	30	41
" 2 "	24	22	24	-	-	40	36	38
" 3 "	24	N.R.	35	32	37	30	30	40
TANK 1 STBD.	37	32	36	38	27	37	40	41
" 2 "	24	22	24	-	-	40	36	38
" 3 "	24	22	24	-	-	40	36	38

PLAN AT UPPER DECK AND TRUNK DECK

TRANSV. END	WING TANK NO. 3 - PS. & SB.	TRANSV. END	WING TANK NO. 2 - PS. & SB.	TRANSV. END	WING TANK NO. 1 - PS. & SB.	TRANSV. END
PS. 60	PS. 61	PS. 61	PS. 61	PS. 61	PS. 61	PS. 61
SB. 61	SB. 62	SB. 62	SB. 62	SB. 62	SB. 62	SB. 62
PS. 46	PS. 47	PS. 47	PS. 47	PS. 47	PS. 47	PS. 47
SB. 46	SB. 47	SB. 47	SB. 47	SB. 47	SB. 47	SB. 47
PS. 35	PS. 36	PS. 36	PS. 36	PS. 36	PS. 36	PS. 36
SB. 35	SB. 36	SB. 36	SB. 36	SB. 36	SB. 36	SB. 36
PS. 40	PS. 41	PS. 41	PS. 41	PS. 41	PS. 41	PS. 41
SB. 40	SB. 41	SB. 41	SB. 41	SB. 41	SB. 41	SB. 41

LONGITUDINAL BULKHEADS



TRANSVERSE WEB FRAMES

FRAME NO.	1	2	3	4	5	6	7	8	9	10	11	12	13	14	15	16
FR. 59	38	40	41	41	36	37	37	36	37	38	37	34	32	37	36	38
FR. 64	20	39	40	39	N.R.	24	24	36	37	38	37	31	30	38	36	36
FR. 76	46	37	36	36	34	37	24	24	34	30	30	30	40	36	38	36
FR. 81	36	30	30	30	32	33	26	22	32	33	40	36	37	40	37	34
FR. 93	41	40	44	42	44	41	41	30	40	41	38	30	30	36	38	34
FR. 98	30	41	38	40	42	43	40	40	34	30	38	34	31	30	36	34
FR. 110	36	34	37	33	37	35	-	22	36	40	37	34	40	40	36	36
FR. 115	24	25	24	24	44	49	27	-	28	40	40	36	30	30	38	39
FR. 127	39	41	40	40	42	41	37	-	-	-	-	-	36	36	32	32
FR. 132	30	37	42	41	44	36	34	33	33	37	33	28	30	30	30	30
FR. 144	BALLAST	BALLAST	BALLAST	BALLAST	BALLAST	BALLAST	BALLAST	BALLAST	BALLAST	BALLAST	BALLAST	BALLAST	BALLAST	BALLAST	BALLAST	BALLAST

CENTRE LINE GIRDERS

TANK NO.	1	2	3	4	5
1	BALLAST	N.R.	N.R.	32	34
2	38	40	38	-	34
3	30	40	38	35	40
4	40	40	38	35	40
5	37	36	38	31	34
6	47	46	38	37	39

TRANSVERSE BULKHEAD PLATING

BULKHEAD FR. NO.	1	2	3	4	5	6	7	8	9	10	11	12	13	14	15	16
53	36	35	34	34	34	36	37	44	42	34	34	34	30	44	44	46
70	32	31	32	33	33	34	36	35	44	44	-	-	-	-	-	-
87	30	31	31	32	34	32	34	33	42	43	31	32	37	34	42	45
104	28	N.R.	31	31	30	31	35	31	41	40	-	-	-	-	-	-
121	32	33	33	31	34	34	32	35	45	46	33	37	36	34	47	41
138	35	35	31	31	30	34	32	34	44	45	-	-	-	-	-	-
150	38	36	31	35	35	35	35	33	46	40	32	-	37	35	48	33

TRANSVERSE BULKHEAD STIFFENERS

BULKHEAD FR. NO.	1	2	3	4	5	6	7	8	9	10	11	12	13	14	15	16
53	34	36	36	36	36	37	37	30	40	37	37	30	40	40	30	41
70	20	20	20	20	20	20	20	20	20	20	20	20	20	20	20	20
87	31	32	32	32	32	32	32	32	32	32	32	32	32	32	32	32
104	10	10	10	10	10	10	10	10	10	10	10	10	10	10	10	10
121	35	35	34	35	35	40	42	48	38	35	35	36	40	40	37	38
138	-	-	-	-	-	-	-	-	-	-	-	-	-	-	-	-
150	-	-	-	-	-	-	-	-	-	-	-	-	-	-	-	-