

Plan of
Messrs.

N^o 489 T.S.M.V.

PLAN OF RUDDER

SCALE 1/2" = 1 FOOT

DETAILS 1" & 3" = 1 FOOT.

RUDDER ARMS SHRUNK AND KEYS ON.

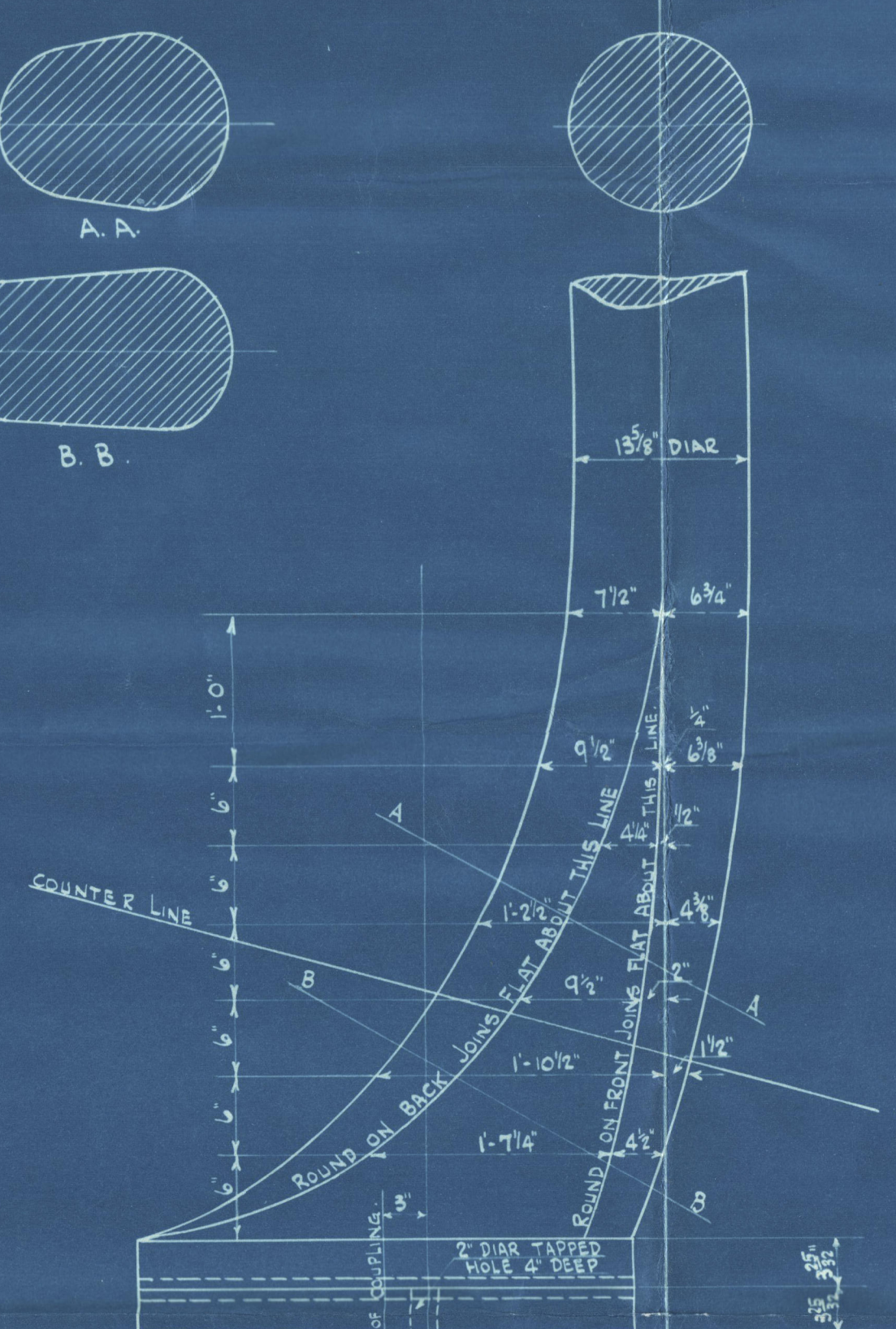
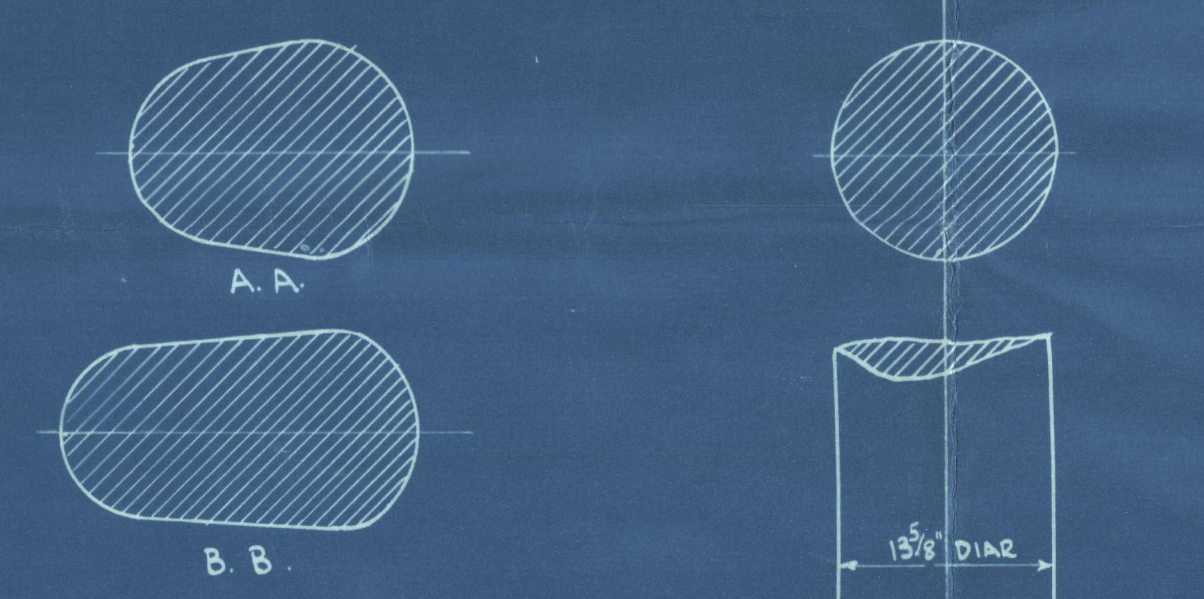
ARMS ARE ON ALTERNATE SIDES OF PLATE. SPACE BETWEEN ARMS 1 1/16"
RIVET HOLES 1 5/16" DIAR. DRILLED BY CONTRACTORS. SPACED AS SHOWN AND
COUNTERSUNK ON OUTER SIDES OF ARMS
STOCK SWELLED AS SHOWN IN WAY OF EACH ARM AND KEPT PARALLEL FOR
EXTENT OF SWELLING.

PINTLES WITH GUNMETAL SLEEVES ALSO COUPLING BOLTS AND ALL NUTS AND PINS SUPPLIED
COMPLETE BY CONTRACTORS.

FRAME NOT TO BE COATED OR PAINTED BEFORE DELIVERY.

FORGED INGOT STEEL TO LLOYDS APPROVAL.

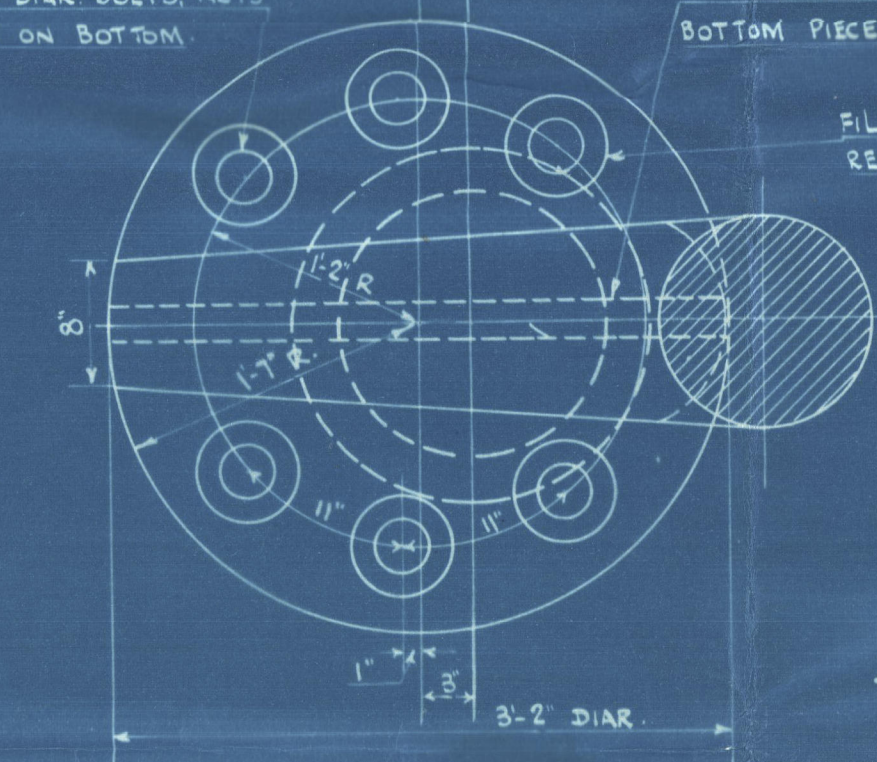
Speed 13 3/8 knots.



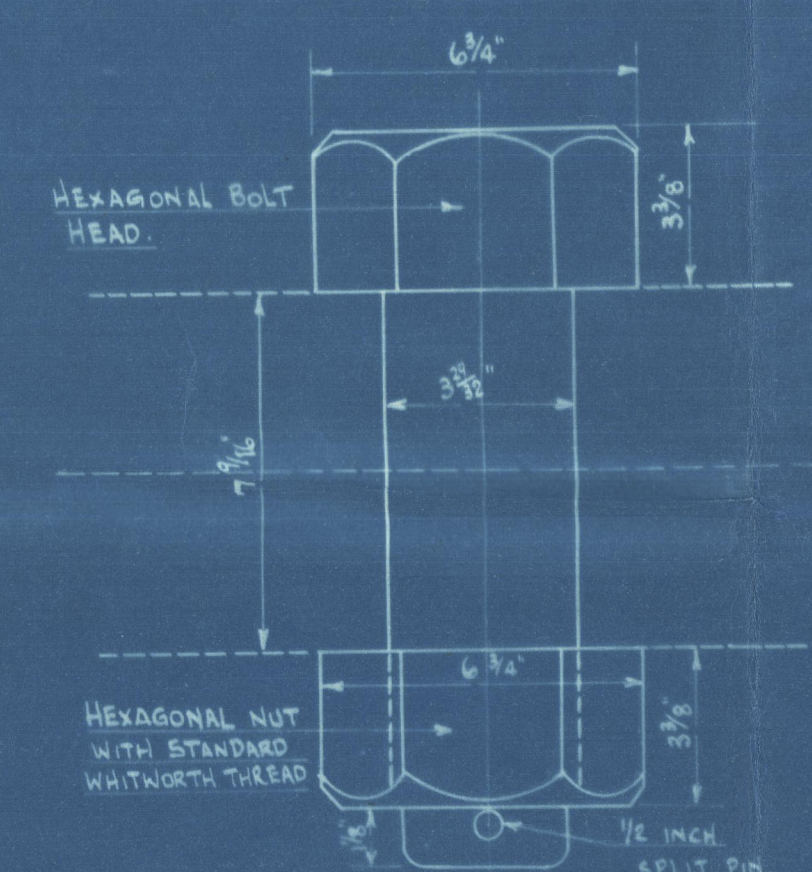
6-3 3/8" DIAR BOLTS, NUTS
& PINS ON BOTTOM.

2 1/4" x 1/2" STEEL FEATHER FASTENED TO
BOTTOM PIECE WITH STEEL TAP BOLTS.

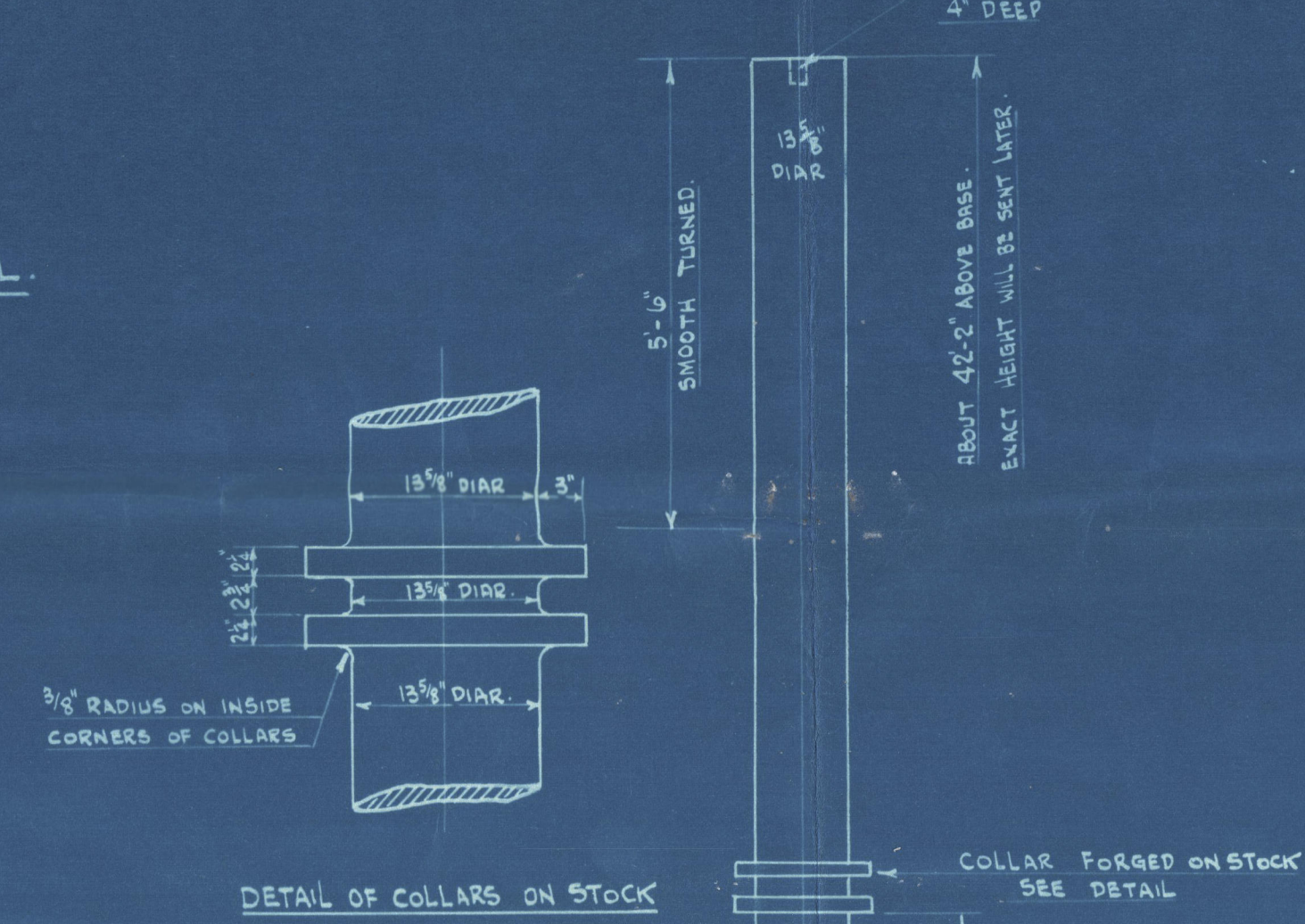
FILLET TOOLED OUT AS
REQUIRED TO HOUSE
BOLT HEADS.



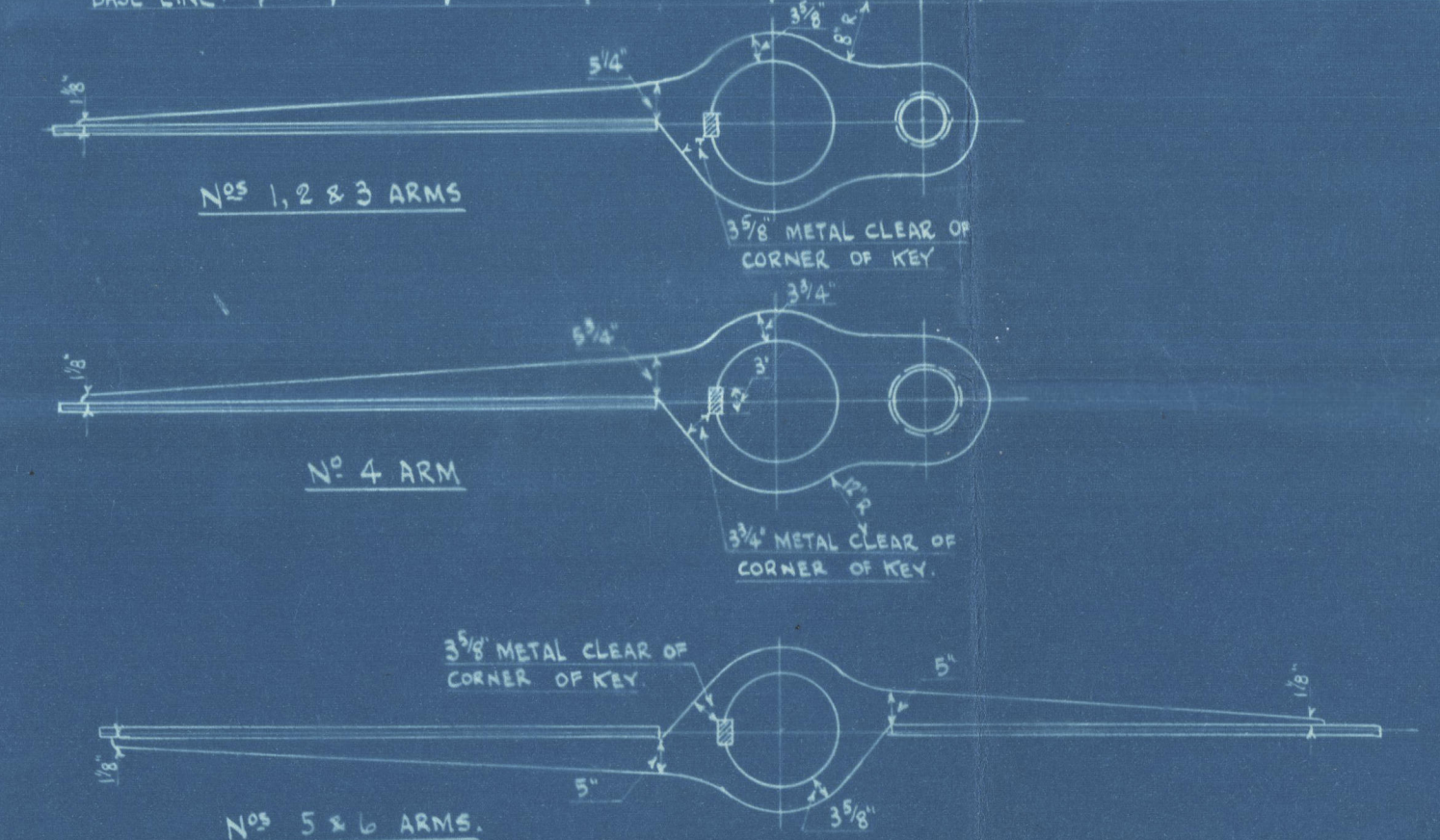
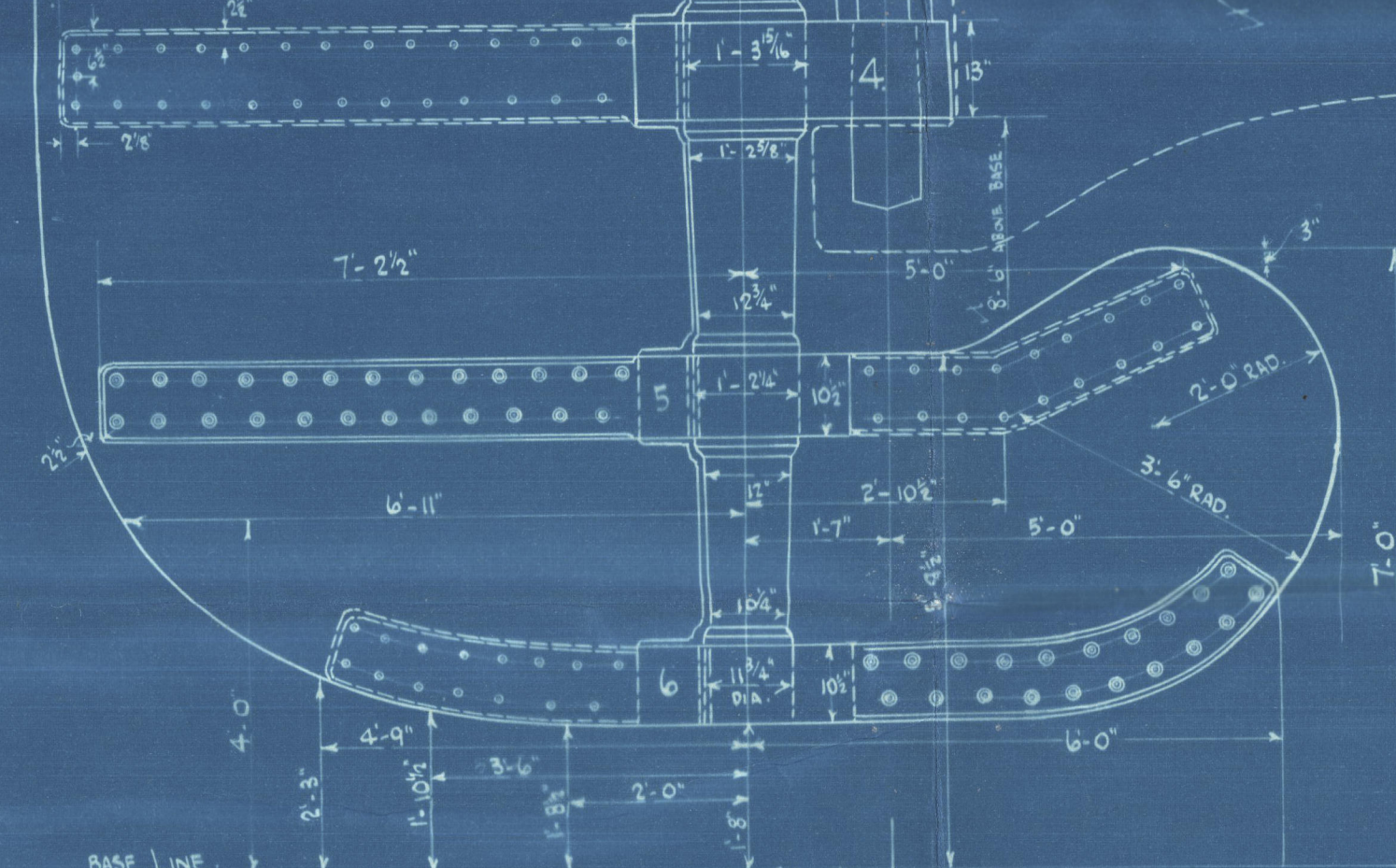
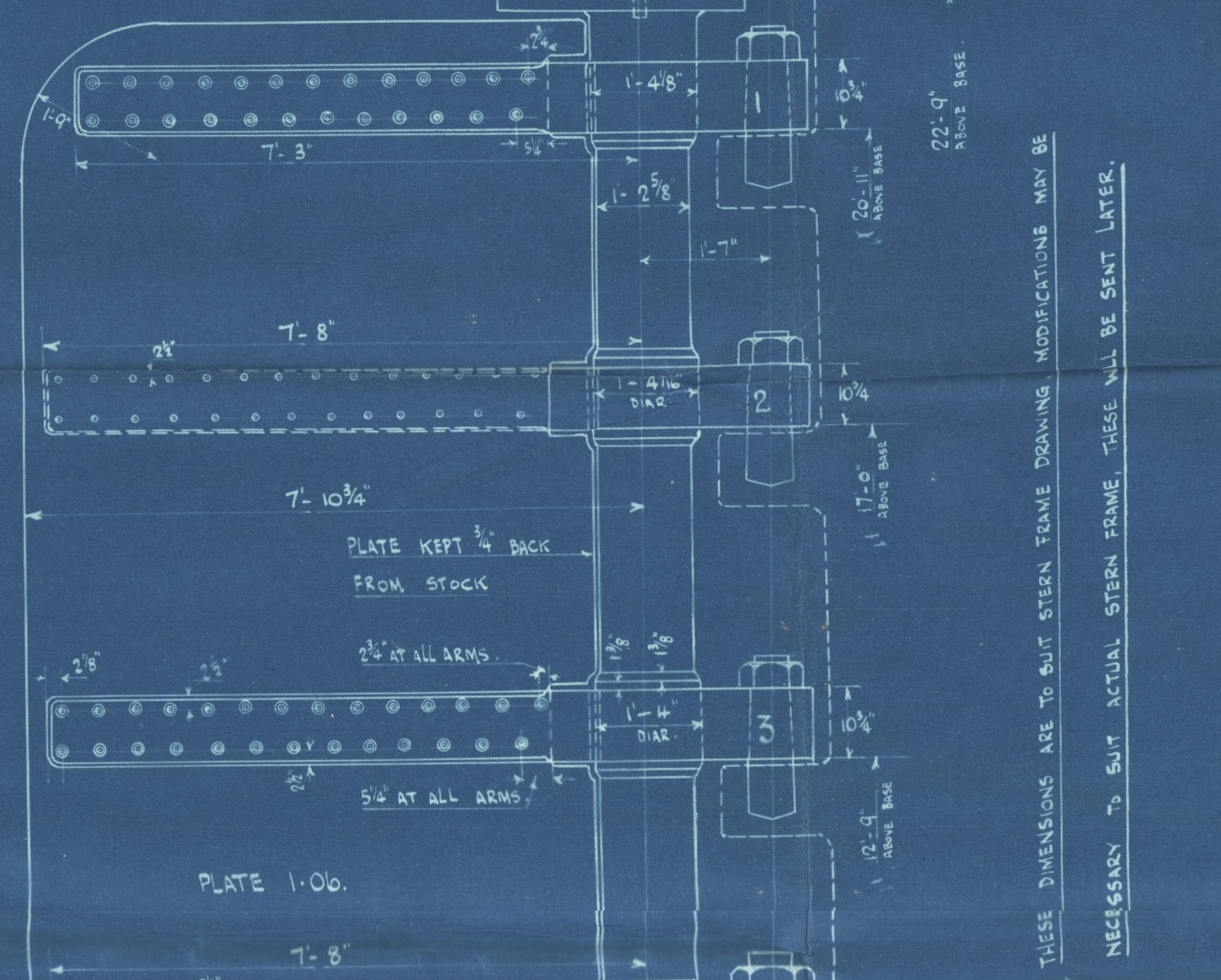
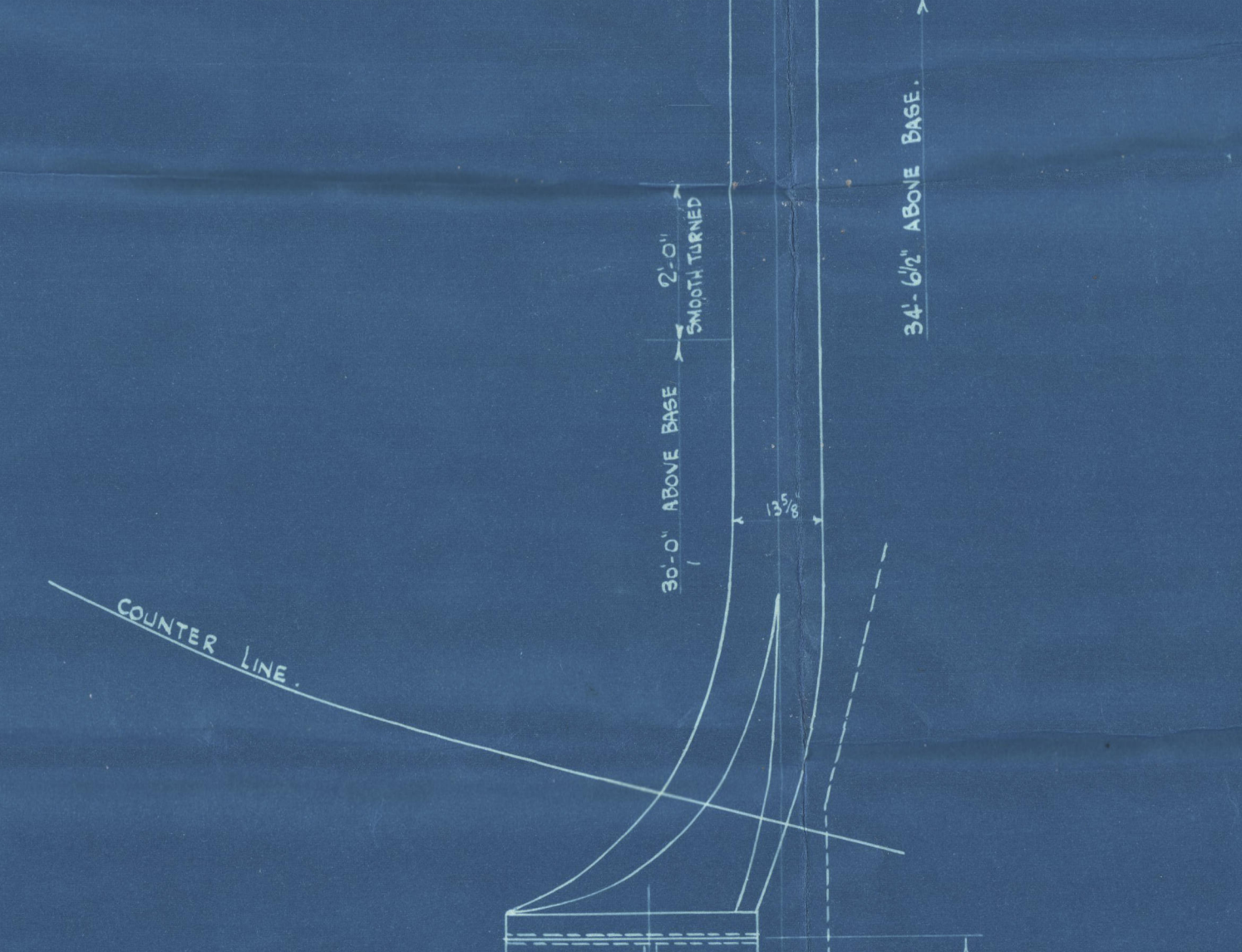
PLAN VIEW OF COUPLING
SCALE 1" = 1 FOOT.



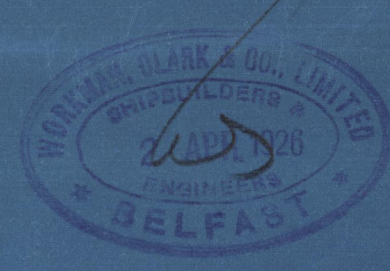
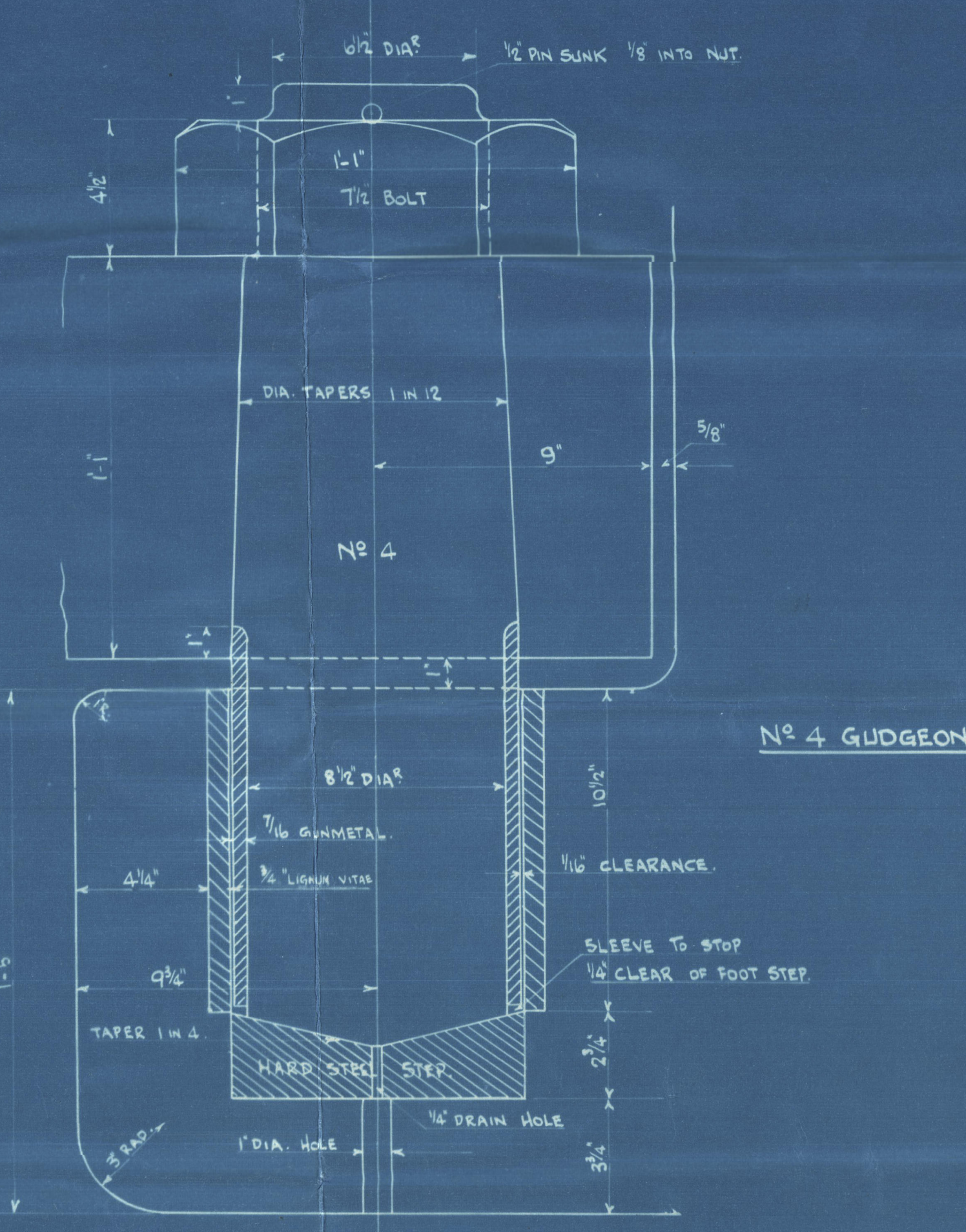
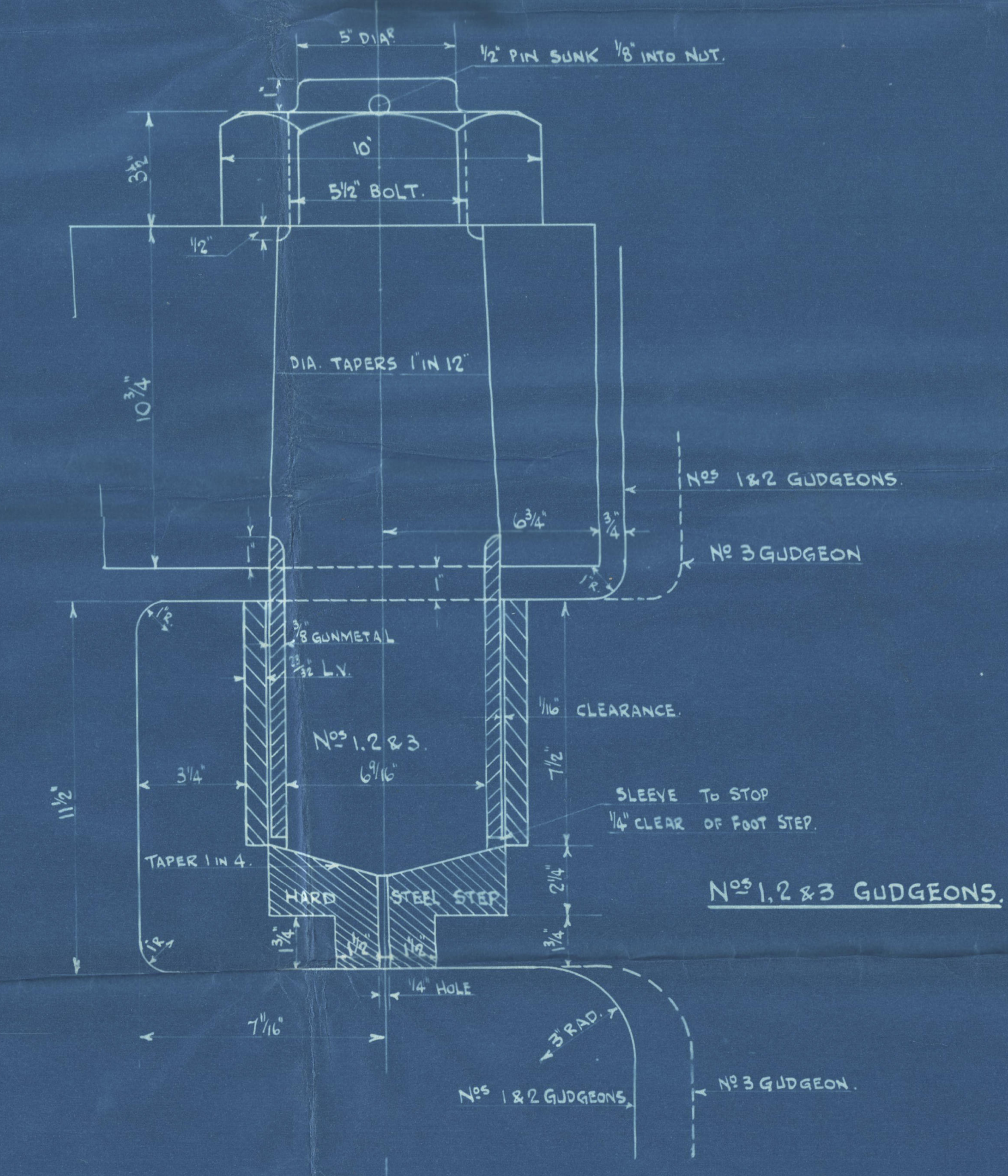
DETAIL OF BOLTS IN COUPLING.



DETAIL OF COLLARS ON STOCK



THESE DIMENSIONS ARE TO SUIT STERN FRAME DRAWING. MODIFICATIONS MAY BE
NECESSARY TO SUIT ACTUAL STERN FRAME. THESE WILL BE SENT LATER.



(19) Rudder

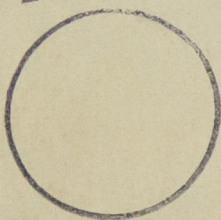
N^o 489

Workman Clark & Co.
Belfast.

M.V. "PORT FREMANTLE"

Rept. N^o

RECORDS DEPT.
LONDON.



© 2020

Lloyd's Register
Foundation

003549-003555-0093 1/2