

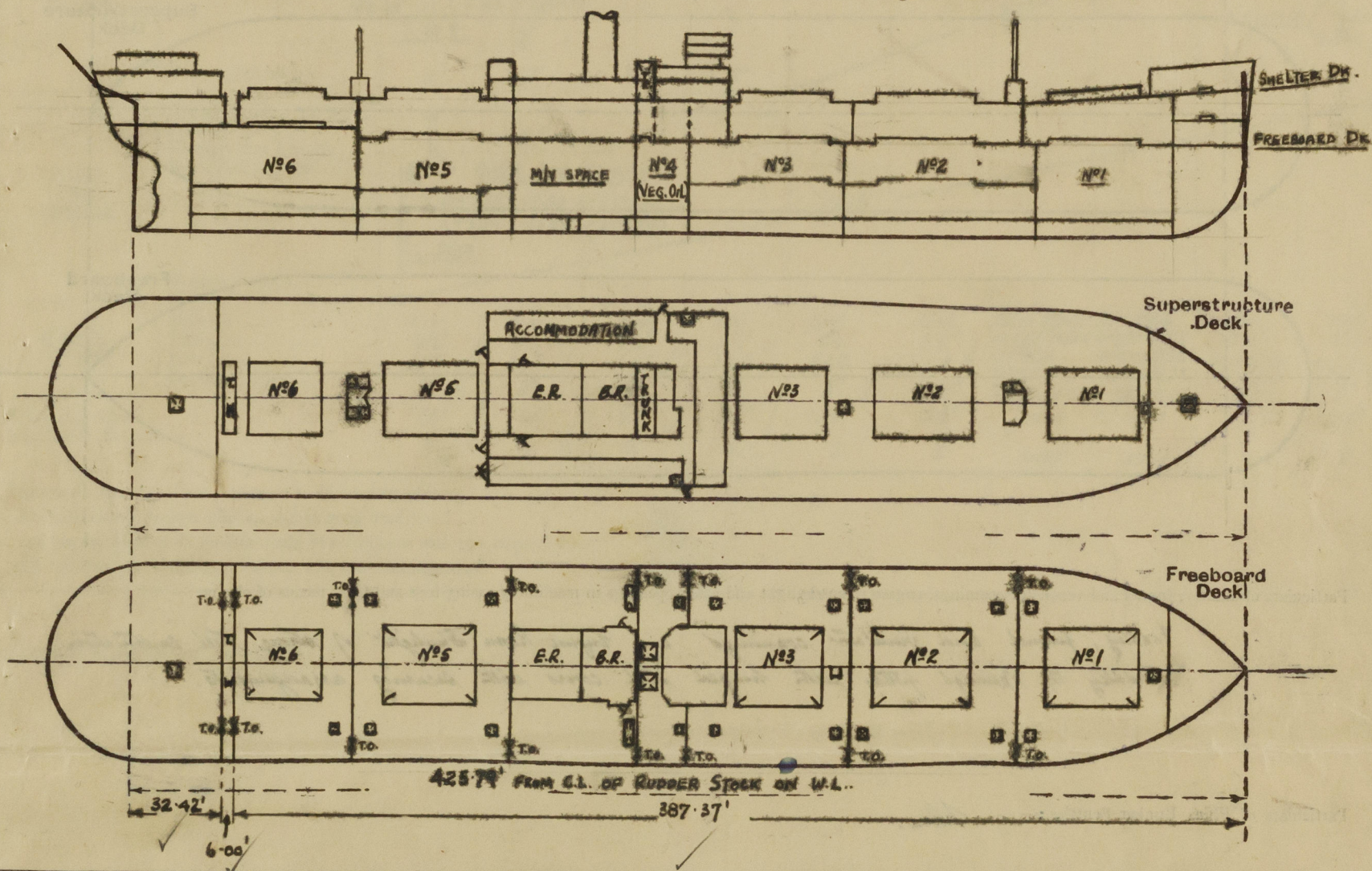
Lloyd's Register of Shipping.

SURVEYS FOR FREEBOARD.

(CONDITIONS OF ASSIGNMENT.)

Ship's Name **S.S. "ARMANTIAN"**Port of Survey **NEWCASTLE-ON-TYNE**Official Number *not yet assigned*Surveyor's Signature *J. McCallum*Nationality and Port of Registry **BRITISH - LIVERPOOL**Date of Survey *During construction.*

Disposition and dimensions of superstructures, trunks, deckhouses and machinery casings to be inserted in the diagrams and tabular statement: -



Particulars of Superstructures, Trunks, Casings, Deckhouses.

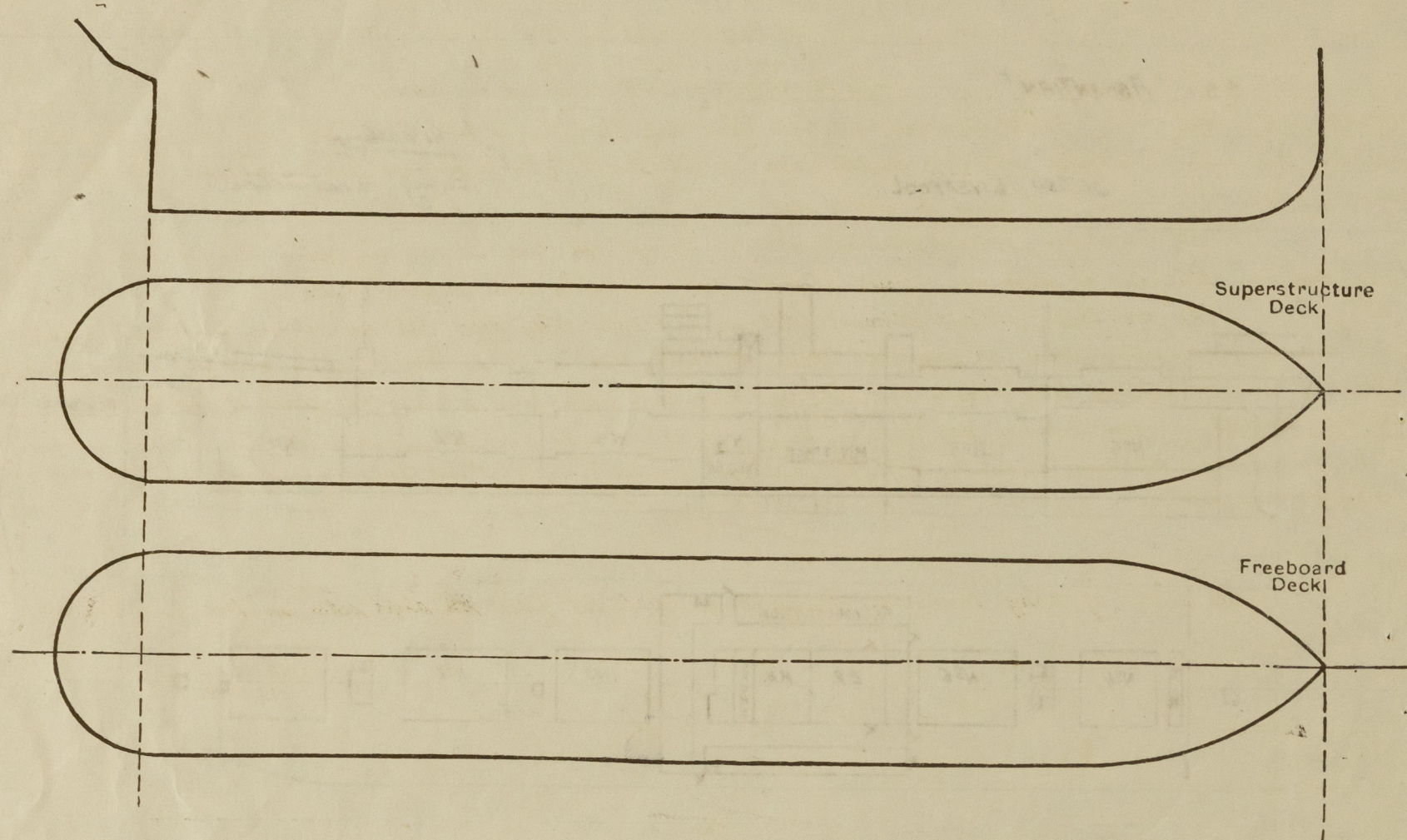
	Coaming	Plating	Stiffeners	Spacing	End Attachments of Stiffeners	Size of Openings	Height of Sills	Height of Casings
Poop Bulkhead ...	26	26	5'3" x 30" O.A.	2'6" - 3'1"	no brackets	2 at 5'1" x 3'1" (to)	18"	8'-9" ✓
Raised Quarter Deck Bulkhead ...	✓							
Bridge, After Bulkhead ...	26	26	5'3" x 30" O.A.	2'5" - 3'1"	no brackets	2 at 5'1" x 3'1" (to)	18"	8'-9" ✓
Bridge, Forward Bulkhead ...	✓							
Forecastle Bulkhead ...	✓	30	4'3" x 32" O.A.	2'6"	no brackets	{ 2 at 5'0" x 3'0" } { 2 at 5'0" x 2'5" }	12"	7'-6" ✓
Trunk, Aft ...	✓							
Trunk, Forward ...	✓							
Exposed Machinery Casings on Freeboard or Raised Quarter Decks ...	✓							
Exposed Machinery Casings on Superstructure Decks ...	✓	✓		✓		2 at 4'9" x 2'1"	✓	✓
Machinery Casings within Superstructures not fitted with Class I Closing Appliances ...	26	26	5'3" x 35" O.A. and 5'3" x 35" O.A.	3'-0"	Bld. at top to Bulk deck.	2 at 3'0" x 2'0"	3'-6"	7'-5" ✓
Deckhouses on Flush Deck Ships ...	✓							

Particulars of Closing Appliances (state if capable of being manipulated from both sides).

Poop Bulkhead <i>(Yonage Well)</i>	2 Yonage openings closed by portable steel plates with hook bolts spaced 12" apart, not passing through the bulkhead. ✓
Raised Quarter Deck Bulkhead ...	✓
Bridge, After Bulkhead <i>(Yonage Well)</i>	2 Yonage openings closed by portable steel plates with hook bolts spaced 12" apart, not passing through the bulkhead. ✓
Bridge, Forward Bulkhead ...	✓
Forecastle Bulkhead <i>(On Shelter Dk.)</i>	2 Yonage openings closed by portable steel plates with hook bolts spaced 15" apart, not passing through the bulkhead. 2 hinged steel doors operated both sides. ✓
Exposed Machinery Casings on Freeboard or Raised Quarter Decks ...	✓
Exposed Machinery Casings on Superstructure Decks ...	2 hinged steel doors operated both sides. ✓
Machinery Casings within Superstructures not fitted with Class I Closing Appliances ...	2 hinged steel doors operated from inside only ✓
Deckhouses on Flush Deck Ships ...	✓

PARTICULARS OF PROTECTION TO OPENINGS, ETC.

The following diagrams should be used to indicate the positions of cargo and coaling hatchways, gangway, cargo and coaling ports, ventilators, companionways, etc., which would affect the seaworthiness of the ship:—



Particulars of fiddle, funnel and ventilator coamings, engine room skylight and other openings in machinery casing tops and their means of closing:—

Fiddle, funnel and ventilator coamings and engine room skylight of strong mild construction. Fiddle top openings fitted with hinged steel covers with securing arrangements.

Particulars of Flush Bunker Scuttles:— *None.*

Particulars of Companionways:— *Access to Shelter tween decks in sides of mainmast - fore (port), main (port and starboard), with door openings 5'-6" x 18", sills 30", and access to tween decks from midship deckhouse on Shelter deck (S.S.), door opening 5'-0" x 2'-1", sills 18" and to Refrig. m/c space (b.s.) from deckhouse, door opening 5'-0" x 2'-1", sills 18". Hinged steel doors operated both sides. Access to poop space in poop deckhouse with hinged wood doors 1 1/4" thick operated both sides, door opening 5'-0" x 2'-1", sills 21". In poop space - funnel escape on Shelter deck, 5'-3" x 2'-0", sills 12", 1 1/4" wood door operated both sides.*

Particulars of Ventilators in exposed positions on freeboard and superstructure decks:—

Height of Ventilator Coamings.

*On Shelter deck - 36" to holds and tween decks in forward 1/4", 30" remainder.
On Forecastle deck - 36" to forecastle space, fore peak store, lamp room and Carpenter's store.
On Poop deck - 30" to poop space.
On Boat deck - 30" to holds, 18"-21" to deckhouse.
On Mainmast top - 27 1/2" to holds and tween decks.*

Coamings of bulkhead scuttles and constructed to Rule requirements, and closed with wood plugs and canvas covers.

Particulars of Air Pipes in exposed positions on freeboard, raised quarter, or superstructure decks:—

*Air pipes on Shelter deck - 18" high.
" " " Poop deck - 18" high.
" " " Forecastle deck - 18" high.*

*Air pipes to F.W. and water ballast tanks fitted with canvas covers.
Air pipes to oil tanks fitted with gauze screen at mouth.*

NEWCASTLE-ON-TYNE, No. 104503.

Asstant.

PARTICULARS OF PROTECTION TO OPENINGS, ETC.

HATCHWAYS ON FREEBOARD AND SUPERSTRUCTURE DECKS.										
SHelter DECK										
Description of Hatchway	Nº1	Nº2,3	Nº5	Nº6	TONNAGE HATCH	HATCH TO FUEL-STORE	HATCH TO Nº1 HOLD T.W. DECK	HATCH TO Nº2 HOLD T.W. DECK	HATCH TO Nº3 HOLD T.W. DECK	LOWER SHIDES
Dimensions of Hatchway	31'-6" x 23'-0"	36'-0" x 23'-0"	36'-0" x 23'-0"	30'-0" x 23'-0"	23'-0" x 4'-6"	34'-0" x 3'-0"	21'-1" x 1'-10"	2'-4" x 2'-5"	3'-0" x 2'-10"	20'-1" x 12'-0"
COAMINGS	Height above Deck	30" ✓	30" ✓	42" ✓	42" ✓	9" ✓	9" ✓	9" ✓	9" ✓	18" ✓
	Thickness	44" ✓	44" ✓	44" ✓	44" ✓	44" ✓	44" ✓	44" ✓	44" ✓	44" ✓
	Stiffeners	See sketch below	3	3	3	NONE	NONE	NONE	NONE	5" x 1/2" 18" 25"
	Brackets, Stays	1 1/4" 18" 25"	1 1/4" 18" 25"	1 1/4" 18" 25"	1 1/4" 18" 25"	NONE	NONE	NONE	NONE	1 1/4" 18" 25"
HATCH BEAMS	Number	6	6	6	6	NONE	NONE	NONE	NONE	2
	Spacing	4'-6" ✓	2'-6" ✓	4'-6" ✓	3'-0" x 4'-6" ✓	NONE	NONE	NONE	NONE	4'-0" ✓
	Scantling and Sketch	18" x 36"	5" x 3" x 46" 0A.	Do.	Do.	NONE	NONE	NONE	NONE	4" x 3" x 44" 0A. 8" x 32"
	Bearing Surface	3"	3"	3"	3"	NONE	NONE	NONE	NONE	3"
FORE AND AFTERS	Number	1	1	1	1	NONE	NONE	NONE	NONE	NONE
	Spacing	12' x 1 1/2" x 46" 0A.	12' x 1 1/2" x 46" 0A.	12' x 1 1/2" x 46" 0A.	12' x 1 1/2" x 46" 0A.	NONE	NONE	NONE	NONE	NONE
	Unsupported Lengths	12' x 1 1/2" x 46" 0A.	12' x 1 1/2" x 46" 0A.	12' x 1 1/2" x 46" 0A.	12' x 1 1/2" x 46" 0A.	NONE	NONE	NONE	NONE	NONE
	Scantling and Sketch	12' x 1 1/2" x 46" 0A.	12' x 1 1/2" x 46" 0A.	12' x 1 1/2" x 46" 0A.	12' x 1 1/2" x 46" 0A.	NONE	NONE	NONE	NONE	NONE
HATCH COVERS	Material	W.W.	W.W.	W.W.	W.W.	W.W.	SOLID STEEL	SOLID STEEL	SOLID STEEL	W.W.
	Thickness	2 1/2"	2 1/2"	2 1/2"	2 1/2"	2 1/2"	2 1/2"	2 1/2"	2 1/2"	2 1/2"
	How fitted	F&A.	F&A.	F&A.	F&A.	F&A.	144" TALK SECURED BY 40 TON TOGLES	144" TALK SECURED BY 40 TON TOGLES	144" TALK SECURED BY 40 TON TOGLES	F&A.
	Bearing Surface	3"	3"	3"	3"	3"	2 1/2"	2 1/2"	2 1/2"	3"
Spacing of Cleats	24"	24"	24"	24"	24"	24"	NONE	NONE	NONE	24"
Number of Tarpaulins	2	2	2	2	2	2	NONE	NONE	NONE	2
<p>*Are wood fore and afters steel shod at all bearing surfaces? ✓</p> <p>Are battens and wedges efficient and in good condition? <i>Yes.</i></p> <p>Are tarpaulins in good condition and in accordance with rule requirements? <i>Yes.</i></p> <p>Are lashings provided in accordance with rule requirements? <i>Yes.</i></p>										

Particulars of any special features:—

Endorsement at first survey and at surveys for renewal of Certificate:—

The fittings and appliances are in accordance with the particulars shown on this form (or as now modified) and are in good condition.

Particulars of Gangway Cargo and Coaling Ports:—

Particulars of Scuppers and Sanitary Discharge Pipes:—

Particulars of Side Scuttles:—

Vertical distance of Sill of lowest Side Scuttle above top of keel

Particulars of Guard Rails:—

Particulars of Gangways, Lifelines, etc.:—

Particulars of Freeing Arrangements.						
	Length of Bulwark	Height of Bulwark	Size of Freeing Ports	Number each side	Area each side	Rule area each side
After Well						
Forward Well						
State position of each freeing port { After Well:— (F. and A. position and height above deck edge) { Forward Well:—						
State whether the freeing ports are fitted with shutters, bars, or rails, and give particulars of such:—						
Additional area where sheer is less than standard.						

Particulars of Gangway Cargo and Coaling Ports:—

Particulars of Scuppers and Sanitary Discharge Pipes:—

Particulars of Side Scuttles:—

Vertical distance of Sill of lowest Side Scuttle above top of keel

Particulars of Guard Rails:—

Particulars of Gangways, Lifelines, etc.:—

Particulars of Freeing Arrangements.						
	Length of Bulwark	Height of Bulwark	Size of Freeing Ports	Number each side	Area each side	Rule area each side
After Well (SHELTER DECK)	359'-3"	8'-6" between frames 28-100 rising to 4'-6" at poop, and 5'-0" at fore-castle.	7 at 12'-0" x 9"	9	77.2 sq. ft.	35.93 ft. ²
Forward Well			1 at 5'-6" x 9" (m. fr. 63 to 5'-6" fr. of 63). 1 at 13'-6" x 9" (fr. 126-132)			
State position of each freeing port { After Well:— Between frs. 18-22, 28-32, 38-42, 63 to 5'-6" fr. of 63, 85-89, 94-98, (F. and A. position and height above deck edge) { Forward Well:— 103-107, 113-118, 126-132. All 9" above deck edge.						
State whether the freeing ports are fitted with shutters, bars, or rails, and give particulars of such:— none fitted.						
Additional area where sheer is less than standard.						

PARTICULARS OF PROTECTION TO OPENINGS, ETC.

HATCHWAYS ON FREEBOARD AND SUPERSTRUCTURE DECKS.											
	FREEBOARD DK.				F/LR FLAT		FREEBOARD DK.				
Description of Hatchway	No 1	No 2, 3, 4, 5	No 4	No 6	COAL HATCH	FORE Pk. STORE	HATCH TO LOWER DECK	ACCESS HATCH	ACCESS HATCH	W.T. ESCAPE HATCH	TRIMMING HATCHES
Dimensions of Hatchway	31'-6" x 27'-0"	36'-0" x 27'-0"	2 AT 7'-9" x 7'-9"	30'-0" x 23'-0"	2 AT 5'-1" x 6'-9"	3'-1" x 3'-1"	2'-0" x 2'-0"	2'-0" x 1'-9"	2'-2" x 2'-2"	2'-6" x 2'-4"	16 AT 2'-6" x 2'-4"
COAMINGS	Height above Deck	9"	12"	9"	9"	9"	9"	9"	6"	9"	9"
	Thickness	44"	44"	44"	44"	44"	44"	44"	44"	44"	44"
	Stiffeners	See sketch below	none	See sketch	none	none	none	none	none	none	none
	Brackets, Stays	none	none	none	none	none	none	none	none	none	none
HATCH BEAMS	Number	6	7	6	6						
	Spacing	4'-6"	4'-6"	3'-0" x 4'-6"							
	Scantling and Sketch	7" x 3 1/2" x 50" B.R.	25" x 40" AS FOR NO 1 HATCH	5" x 5" x 40" 18" x 36"							
	Bearing Surface	3"	3"	3"							2 To NO 1 HOLD 4 To NO 2 HOLD 4 To NO 3 HOLD 4 To NO 5 HOLD 2 To NO 6 HOLD
FORE AND AFTERS	Number										
	Spacing										
	Unsupported Lengths										
	Scantling* and Sketch	9" x 3 1/2" x 44" B.R.									
	Bearing Surface										
HATCH COVERS	Material	W.W.	W.W.	BOLTED STEEL COVERS.	W.W.	W.W.	W.W.	2 1/2" SOLID WOOD COVER	2 1/2" SOLID WOOD COVER	HINGED STEEL N.T. COVER	2 1/2" SOLID WOOD COVER
	Thickness	2 1/2"	2 1/2"	COVERS.	2 1/2"	2 1/2"	2 1/2"	2 1/2"	2 1/2"	2 1/2"	2 1/2"
	How fitted	F.P.A.	F.P.A.	SECURED BY BOLTS 6" APART.	F.P.A.	F.P.A.	F.P.A.			SECURED BY BOLTS 14" APART.	
	Bearing Surface	3"	3"		3"	3"	2 1/2"	2 1/2"	2 1/2"		2 1/2"
Spacing of Cleats	24"	24"	none	24"	24"	24"	12"	12"	none	14"	2
Number of Tarpaulins	2	2	none	2	2	2	2	2	none	2	2
*Are wood fore and afters steel shod at all bearing surfaces?											
Are battens and wedges efficient and in good condition?											
Are tarpaulins in good condition and in accordance with rule requirements?											
Are lashings provided in accordance with rule requirements?											

Particulars of any special features:—

Endorsement at first survey and at surveys for renewal of Certificate:—

The fittings and appliances are in accordance with the particulars shown on this form (or as now modified) and are in good condition.

