

Lloyd's Register of Shipping.

Ship's Name "OMALA"

Official No.

Memorandum of alterations reported since ship was surveyed for assignment of Load Lines in 1938

Particulars of Freeing Arrangements in Fore Well and W.T. Doors in

Forecastle Front.

Forward Well.

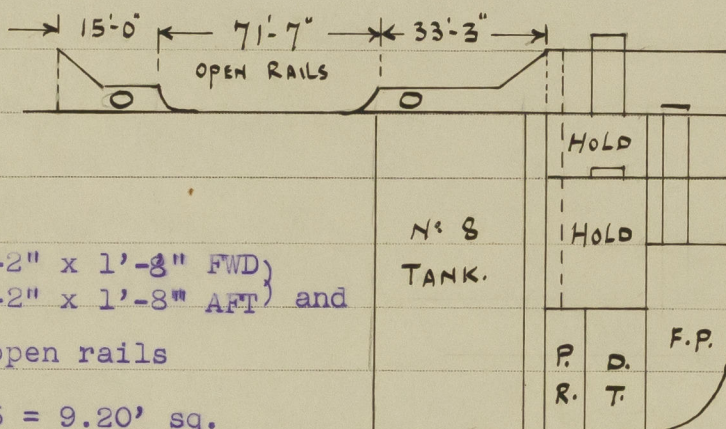
Length 119'-10"

Bulwark 3'-6" high

one a 3'-2" x 1'-8" FWD }
Freeing Ports one a 3'-2" x 1'-8" AFT } and

71'-7" open rails

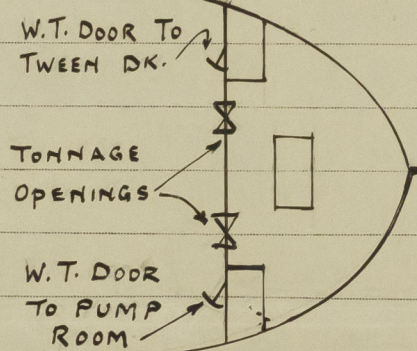
Area each side 2 x 4.6 = 9.20' sq.



Freeboard Deck.

Forecastle Bulkhead.

Access to tween deck (Port) and
to pump room starboard gained
through stairways arranged within
the forecastle and substantially
steel enclosed.



Door openings in Forecastle Bulkhead.

54 1/2" x 30' and 51" x 30' sill 25" closed

by W.T. hinged steel doors secured by clips
manipulated from both sides.

Two tonnage openings 4'-2 x 3'-2" with 25" sill
closed by steel plates with hook bolts.

(copy placed on board)

marked. *[Signature]*

3 JUN 1947

[Signature]



© 2021

Lloyd's Register
Foundation