

CANTIERE MONFALCONE		
Sezione Marina Mercantile Ufficio Tecnico Gruppo Navale		
Scale	Gruppo	Reportage
1:25		
OSSATURE RINFORZ.		Costr. 1136
E SEMPLICI		Dis. 18/72-104

PER COST. RINF.	18/72	18/104
PER COST. SEMP.	18	1136

COSTOLE RINFORZATE N° 80-108-116-118-120 VEDI DIS N°

MODIFICHE

- 6-2-1915: MODIF. LAM. COPERTA E ATACCO BAGLIONE TANK LATI
- 6-7-1935: AGGIUNTA FORI D'ALLEGGERIMENTO

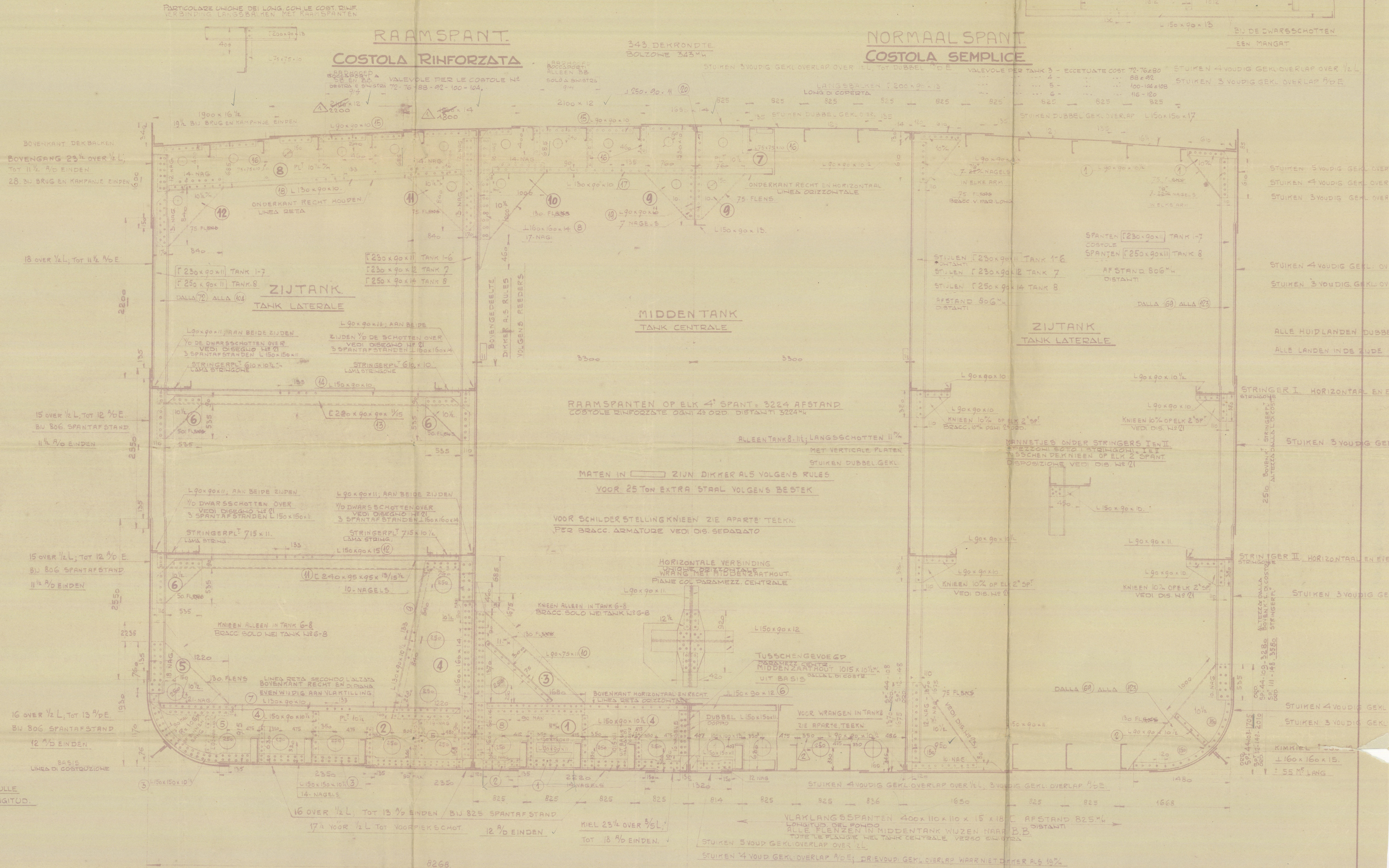
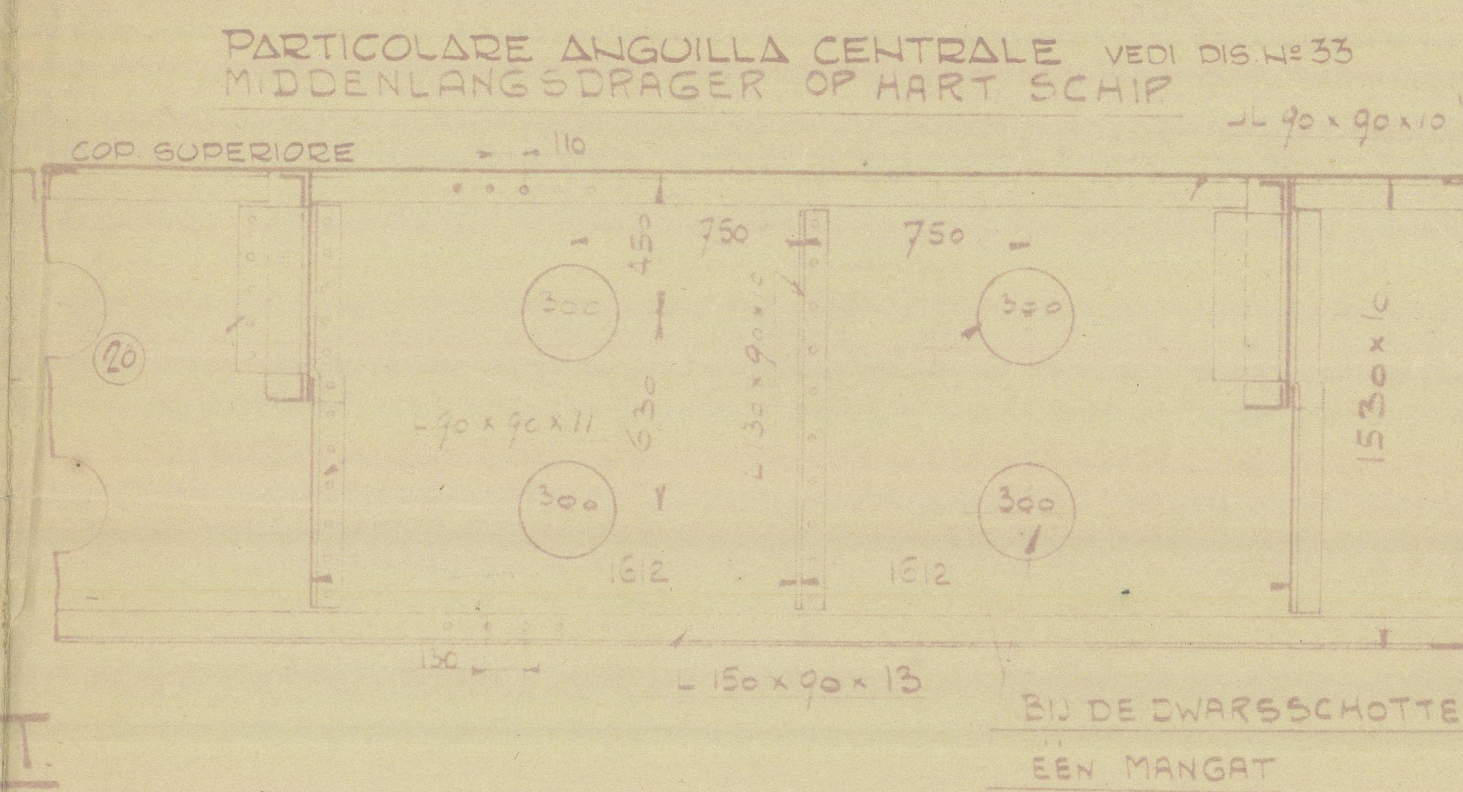
$$L \cdot (B+D) = 425 \cdot (5425 + 3628) = 13175$$

$$L \cdot D = 425 \cdot 31 = 13175$$

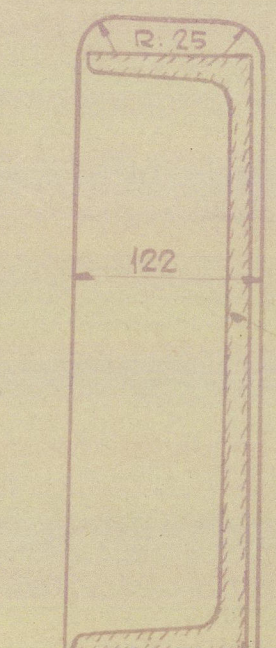
$$L : D = 425 : 31 = 13,7$$

NOTE ALLE PROFIEMI ZIJN NIEUWE DUTSCHE (1927)

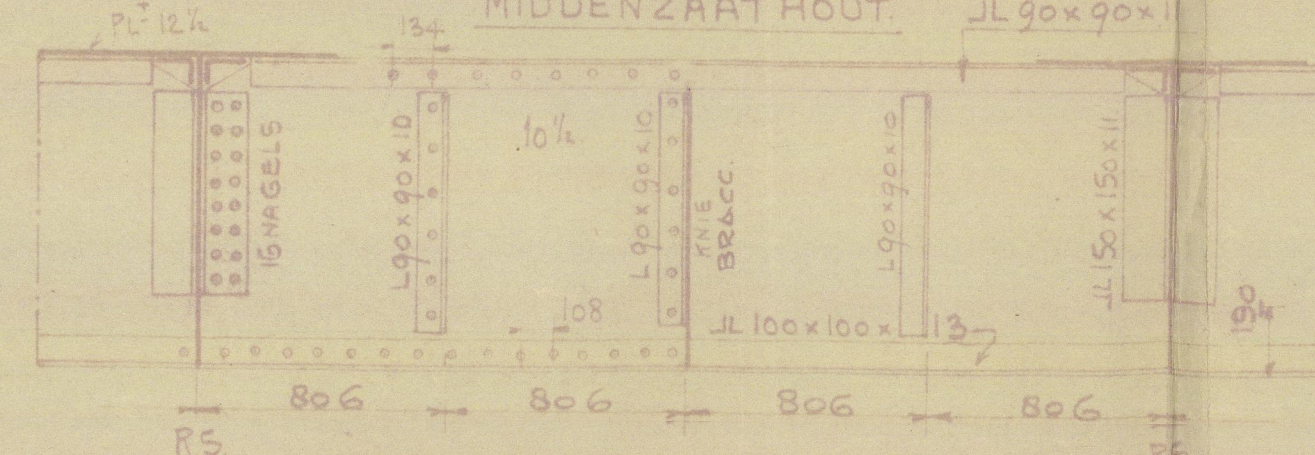
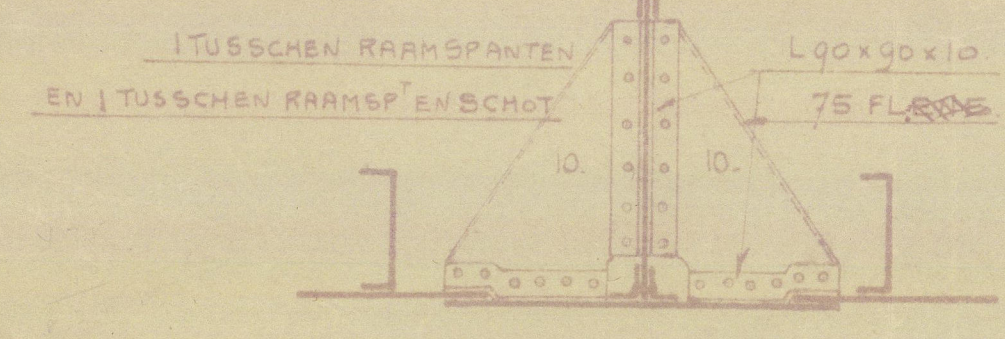
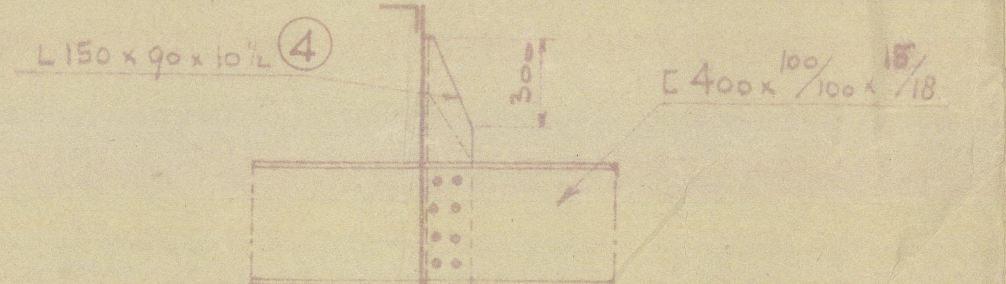
WAAR NIET ANDERS AANGEGEVEN ALLE NAGELS 22% DIAMETER
DOVE NON INDICATO DIVERSAMENTE TUTTO CHIODI 7/8" DIAMETRO
NAGELS = CHIODI



DETAGLIO FORI SULLE
PIGHE PER PASS. LONGITUD.



VERBINDING LANGSPANTEN MET RAAMSPANTEN
PARTICOLARE UNIONE LONGIT. CON LE COST. RINFORZATE



KNIEEN WAAR NOODIG BIJ DE HOEKEN JOGGELIEN
DOVE NECESSARIO I BRACC. VERBANNO GOGOLATI
KNEE FLEZEN SCHUIN AFKNIPPEN
PLANGIEN DEI BRACC. TAGLIARE INCLINATE
ALLE STANDE FLEZEN VAN VERSTERKING SMOET STALEN
TOTE LE PLANGIEN LIBERE DEI ANGOLI DI RINFORZO
SCHUIN AFKNIPPEN OP 2x STANDE FLESHOOGTE
TAGLIARE:

clean 1136
Nieuwje beken
(Nieuwje beken)
Lentice limits's yard
N° 1136

Midship

003534-003540-0181



© 2021

Lloyd's Register
Foundation