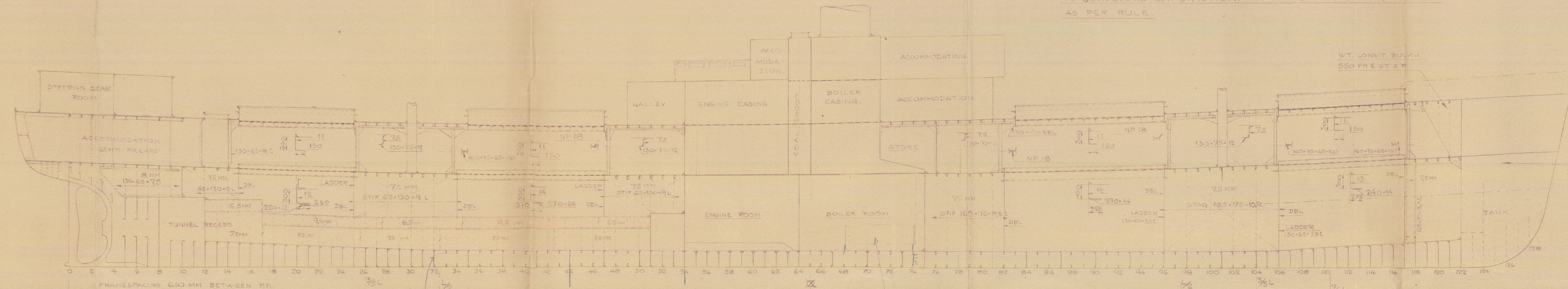
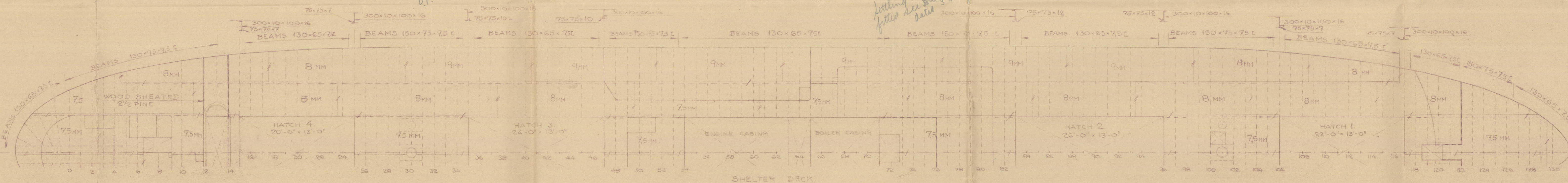


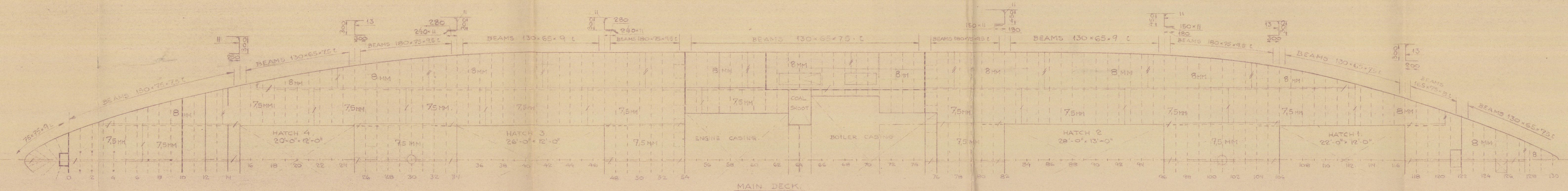
MASTS, WINDLASS, WINCHES AND STEERING GEAR SUPPORTED
TO SURVEYORS SATISFACTION, TRIPPING BRACKETS TO GIRDERS
AS PER RULE.



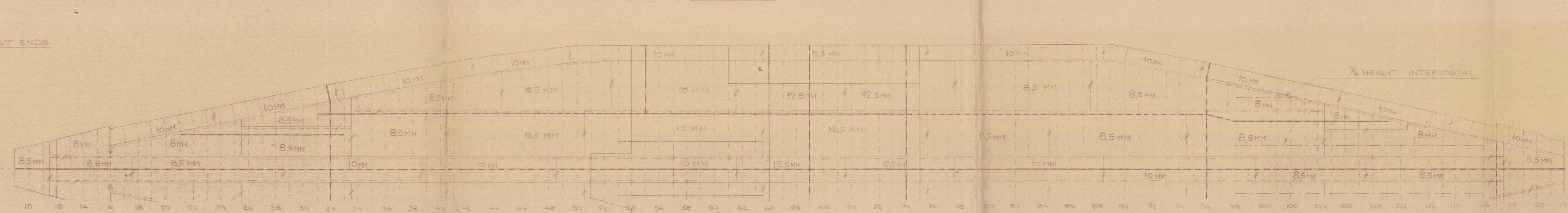
LONGITUDINAL SECTION.



SHELTER DECK.



MAIN DECK.

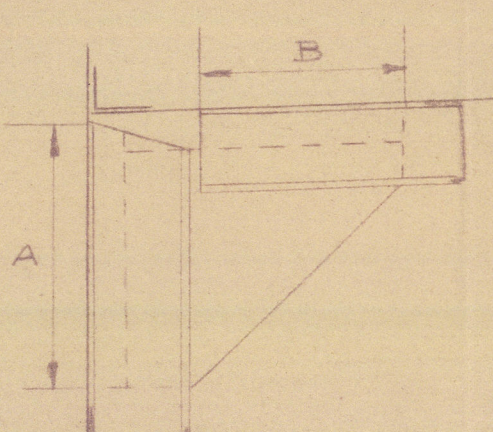


TANKTOP.

RIVETING OF BUTTS:
UPPER DECK: STRINGER PLATE - DOUBLE
DECK PLATES - DBL FOR 1/2 L - SINGLE AT ENDS
SECOND DECK: STRINGER PLATE - DOUBLE
DECK PLATES - SINGLE
CENTRE GIRDER: TREBLE FOR 1/2 L DOUBLE AT ENDS
TANKTOP: CENTRE STRAKE DOUBLE RIV.
TRM STRAKE DBL FOR 1/2 L SINGL. AT ENDS
MARGIN PLATE: DOUBLE RIV.

BEAM KNEES.

DEPTH OF BEAMS	LENGTH OF ARMS		RIVETS
A	B		
130	390	300	4-3/4"
150	450	300	4-3/4"
180	540	380	5-3/4"
*	495	250	5-3/4"
* *	600	430	5-7/8"

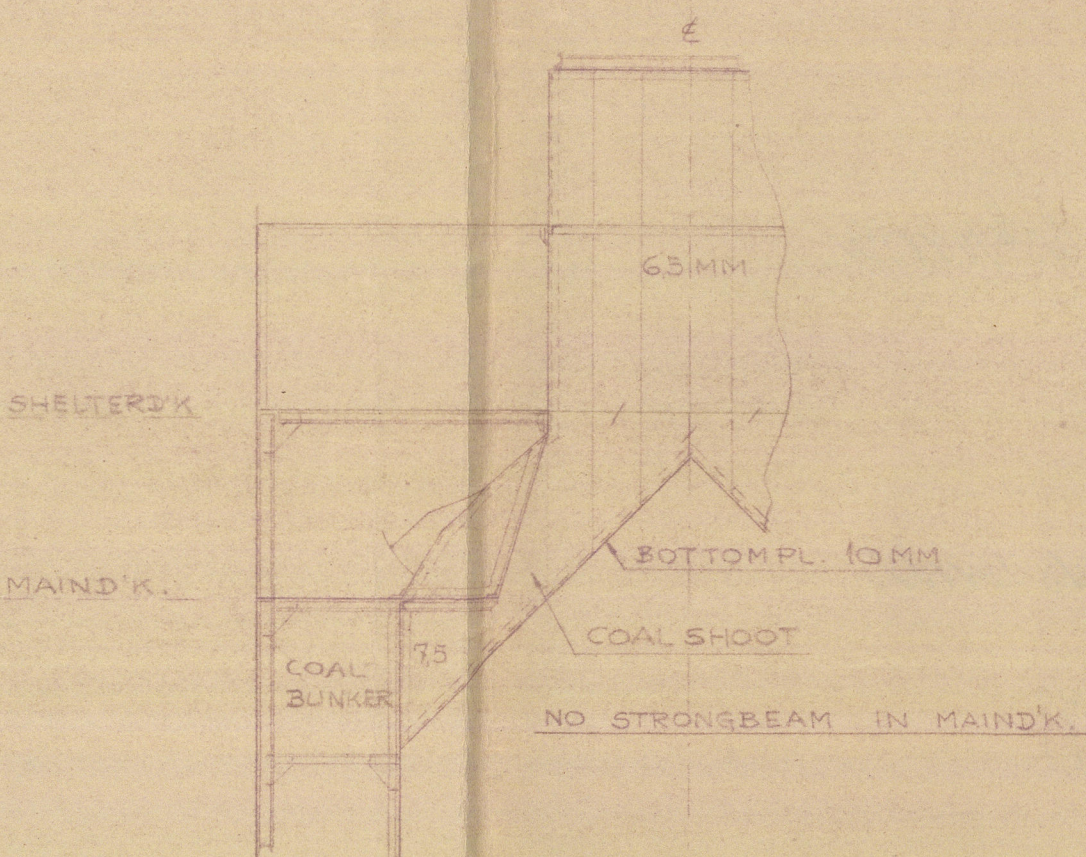


BEAM KNEES AT UPPER DECK: THICKNESS 9 MM WHERE BEAMS ON EV. FR.

BEAM KNEES AT 2ND DECK: THICKNESS 9.5 MM.

* BEAM KNEES AT 2ND DECK IN WAY OF CUT FRAMES, THICKNESS 9.5 MM.

* * BEAM KNEES AT 2ND DECK IN WAY OF PANTING FRAMES THICKNESS 10 MM.



SECTION ON FRAME #63.
SHOWING THE COAL SHOOT.
LOOKING FORWARD
SIMILAR CONSTRUCTION ON FRAME #65.

42-43

DIMENSIONS.

LENGTH PP	260'-0"
BREADTH	37'-9"
DEPTH TO MAINDECK	16'-4"
" " SHELTER D.K.	24'-4"

CLASS: LLOYDS REGISTER #100 A.1. WITH FREEBOARD.
STRENGTHENED FOR NAVIGATION IN ICE.

LONGITUDINAL SECTION AND PLANS.

SKALA 1:100.

ÖRESUNDSVARVET AB LANDSKRONA.
4.12.35.

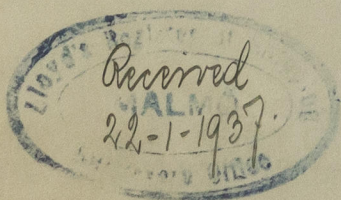
003525-003532-0131

Mahrö.

Öresundsvarvet AB. Landskrona
Yard No. 42, "BELE"

Profile and Plans of vessel as built.

(Mahrö F.E. Rpt. No. 1527)



RETAIN



© 2020

Lloyd's Register
Foundation

003525-003532-0131