

# S.S. TAIPING. COSTA PROPULSION BULB.

SCALE :  $\frac{1}{2}$ " AND 1" = ONE FOOT.

## NOTES.

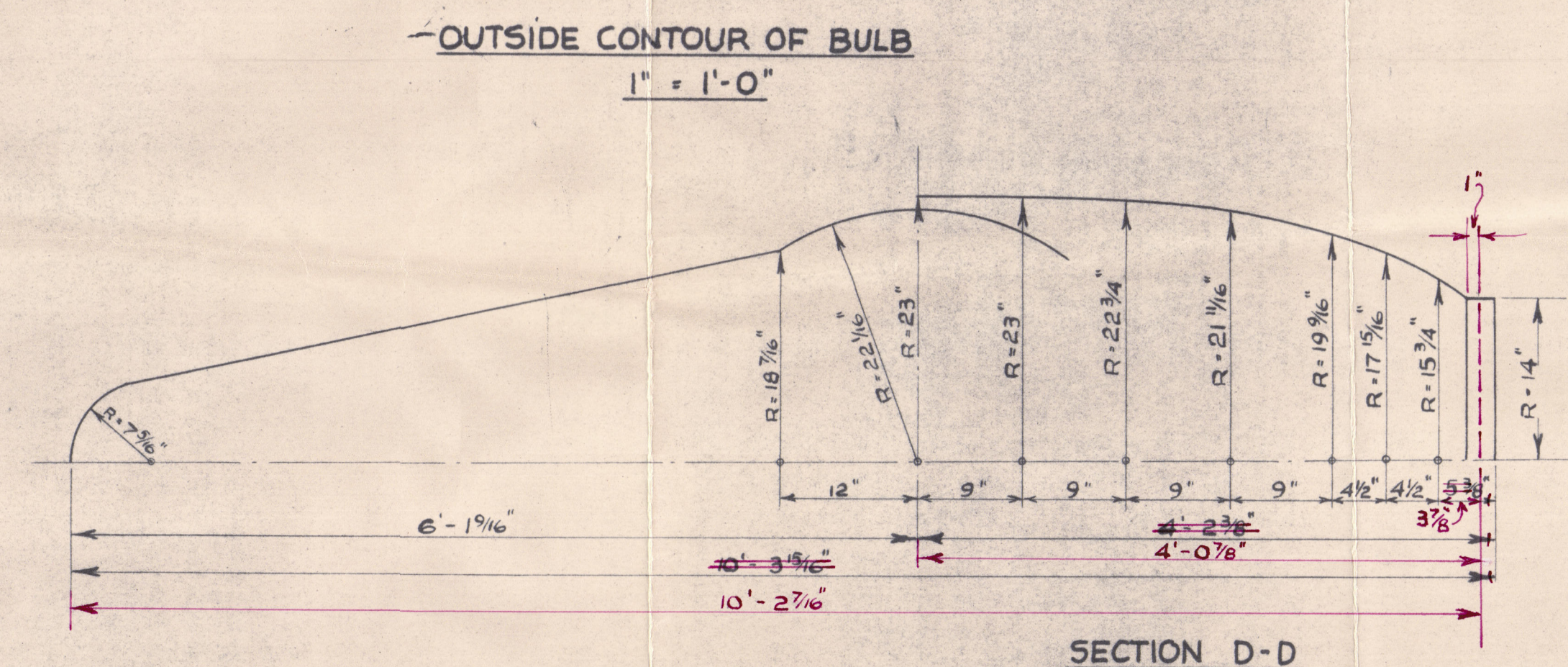
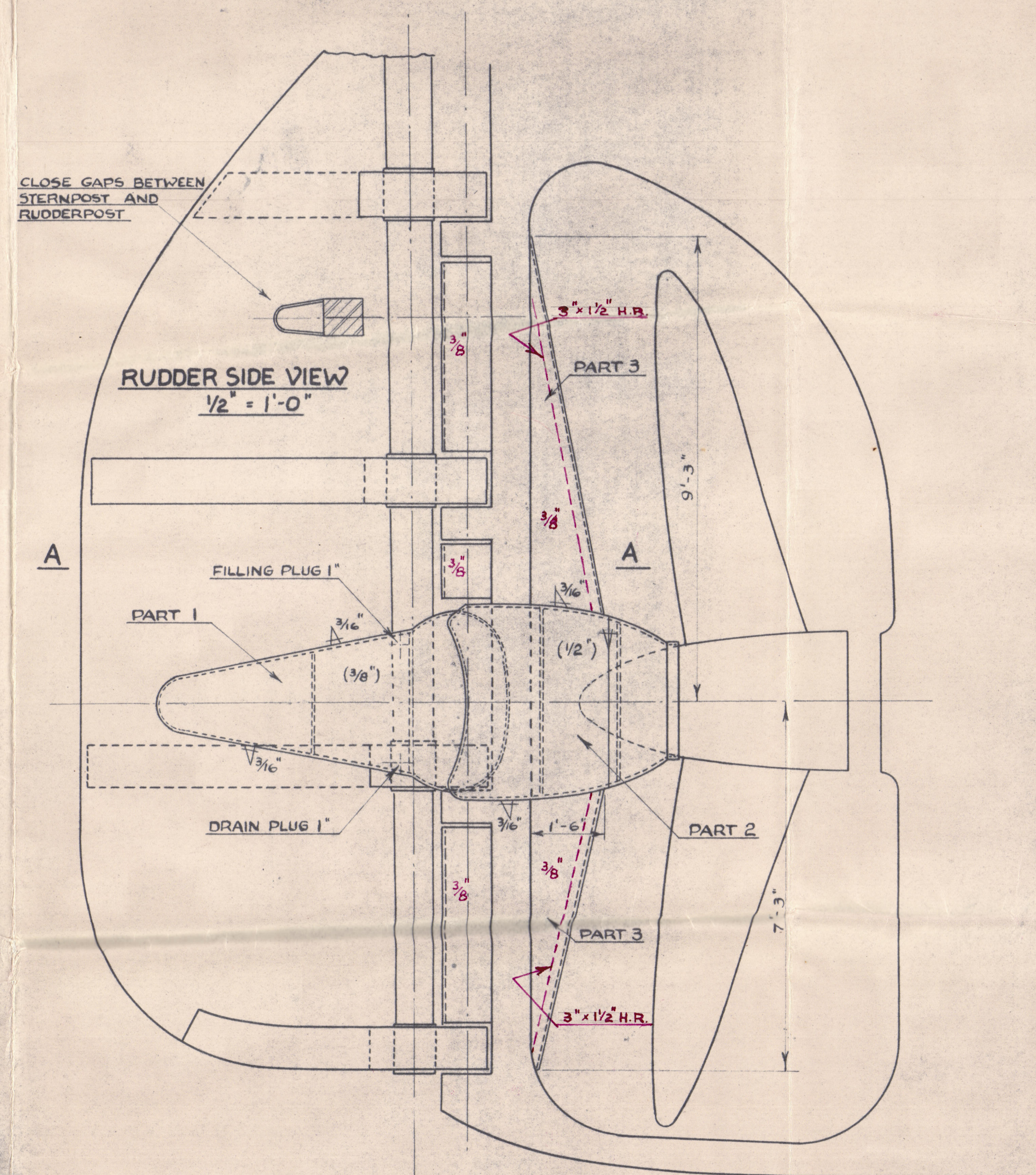
THE OUTER SHELL CAN BE MADE IN SLICES ACCORDING TO SHIPYARD FACILITIES AND ASSEMBLED BY MEANS OF ELECTRIC WELDING. THE WELDS TO BE SMOOTHENED BY GRINDING. FILLING AND DRAIN PLUGS TO BE KEPT FLUSH WITH SHELL.

THE BULB IS TO BE PRESSURE-TESTED BY A HEAD OF WATER OF 300  $\frac{7}{16}$ " (12 INCHES) ABOVE BULKHEAD DECK.

FOR CONSERVATION THE INNER PARTS OF THE BULB ARE TO BE COATED WITH MINERAL OIL OR BITUMINOUS SOLUTION AS GENERALLY DONE FOR THE TREATMENT OF DISPLACEMENT RUDDERS.

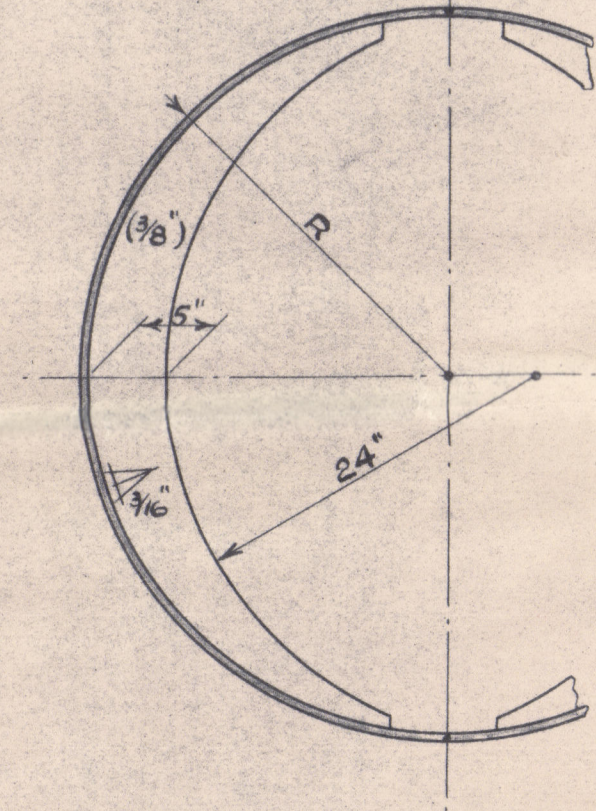
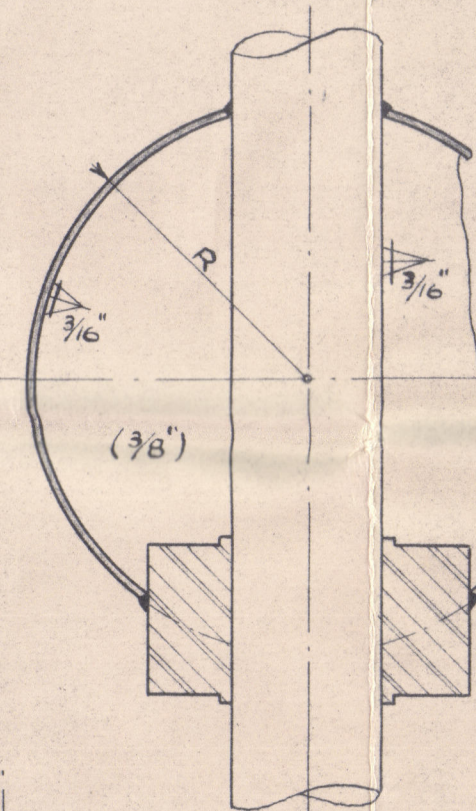
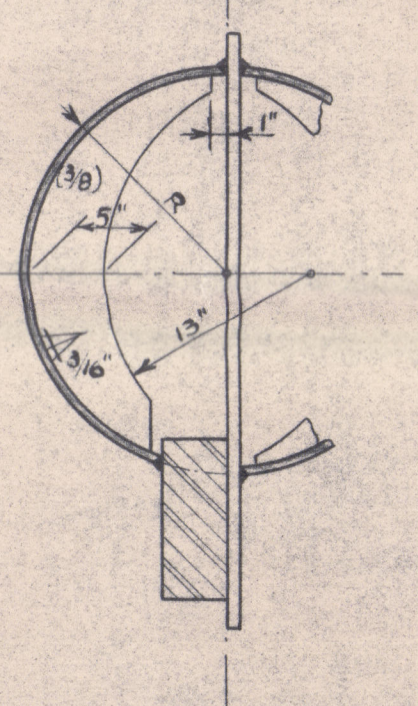
THE INSIDE OF THE NON-WATERTIGHT PARTS IS TO BE PROTECTED BY A SUFFICIENT LAYER OF ANTIRUST-PAINTING.

PARTS OF THE BULB TO BE ASSEMBLED IN SHIP AS MUCH AS POSSIBLE. ERECTION ON SHIP IN THE SAME SEQUENCE AS NUMBER OF PARTS.

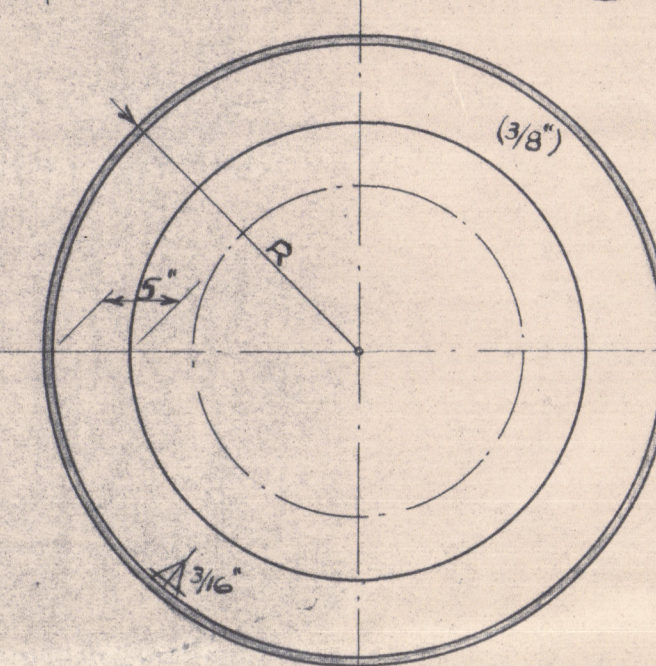
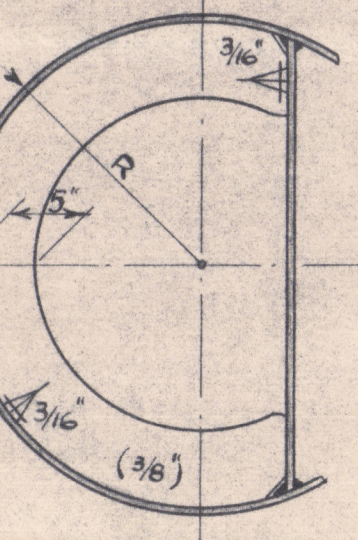


SECTION C-C

SECTION B-B



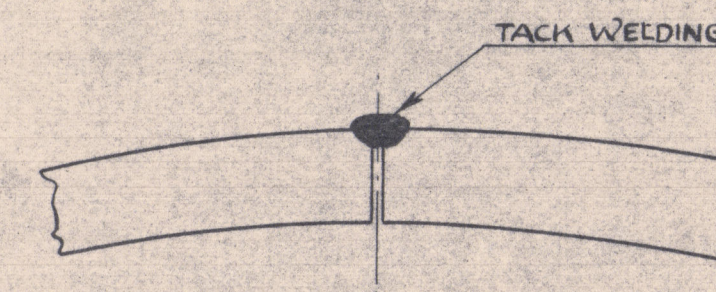
SECTION F-F



SECTION E-E

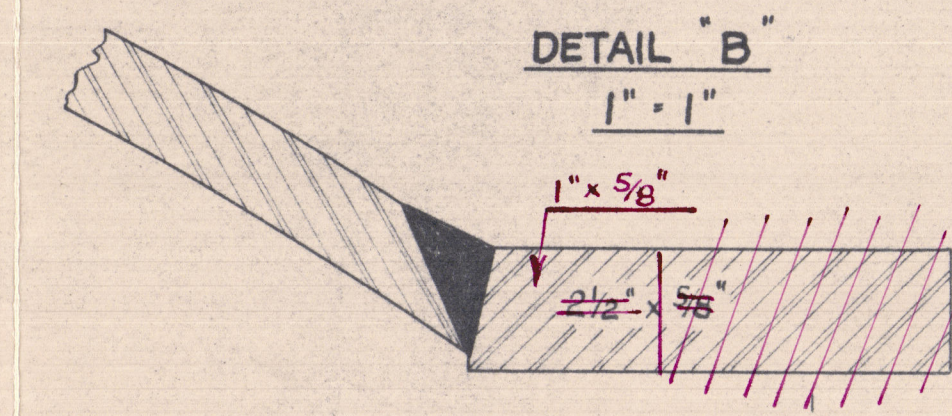
DETAIL "A"

1" = 1"

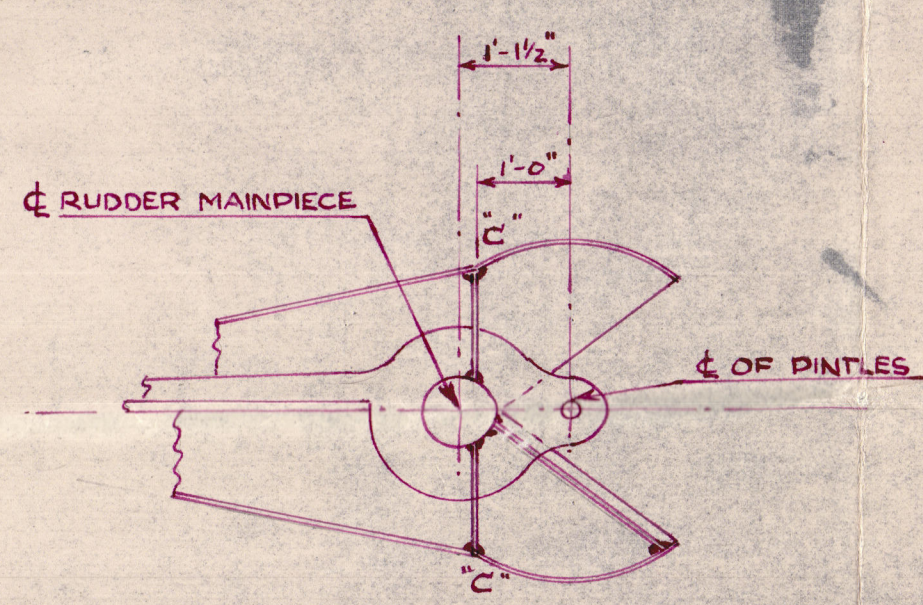


DETAIL "B"

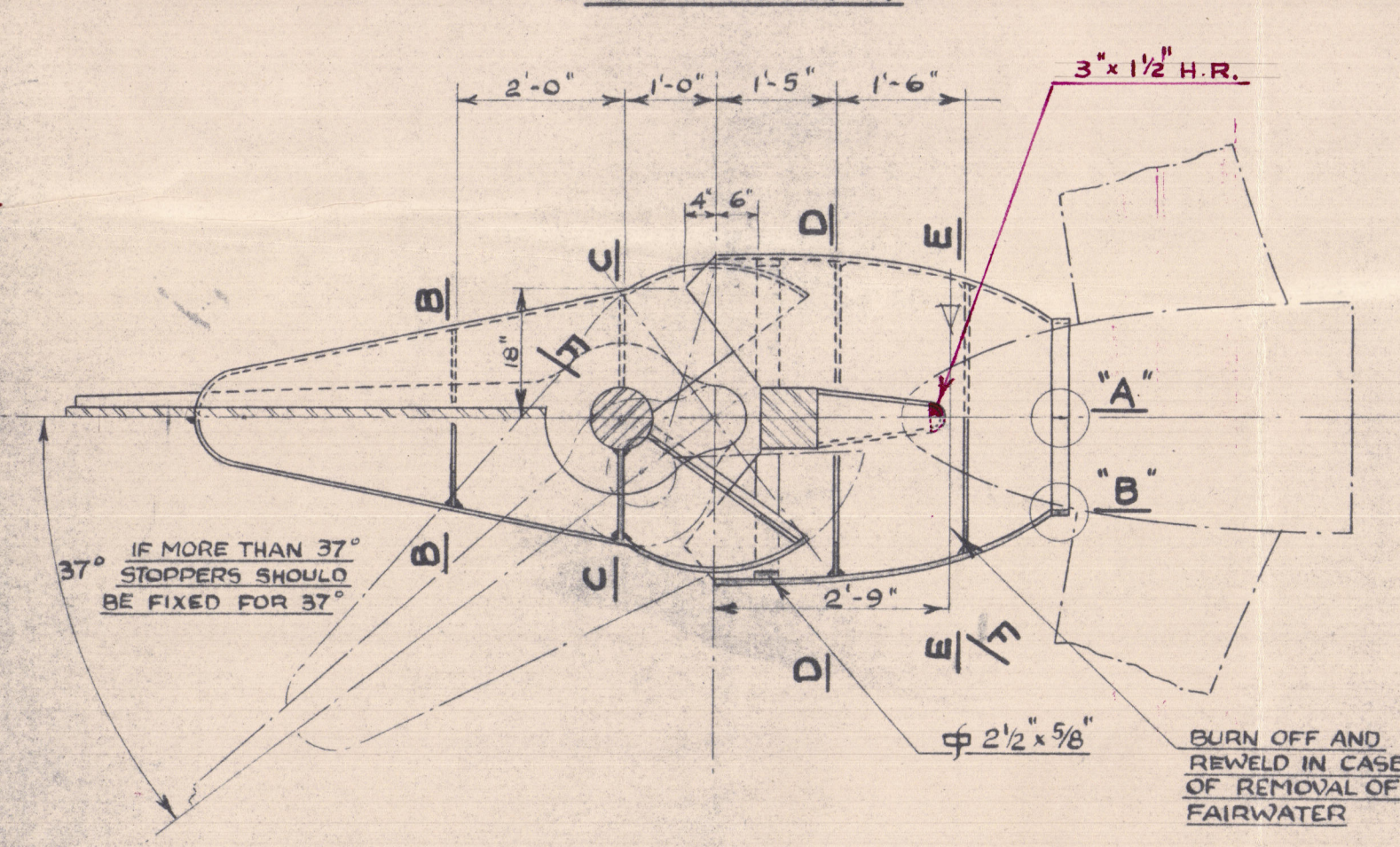
1" = 1"



IN CASE IT IS REQUIRED BY REAL POSITION OF SCREW CUT OFF HERE AS MUCH AS NECESSARY



SECTION A-A



SECTION THROUGH CL OF SHAFT



S.S. TAIPING.

COSTA PROPULSION BULB

SYDNEY RPT. No. 30253

003503-003512-0232

TAIPING.



© 2020

Lloyd's Register  
Foundation

003503-003512-0232