



FABRICATED STERN FRAME

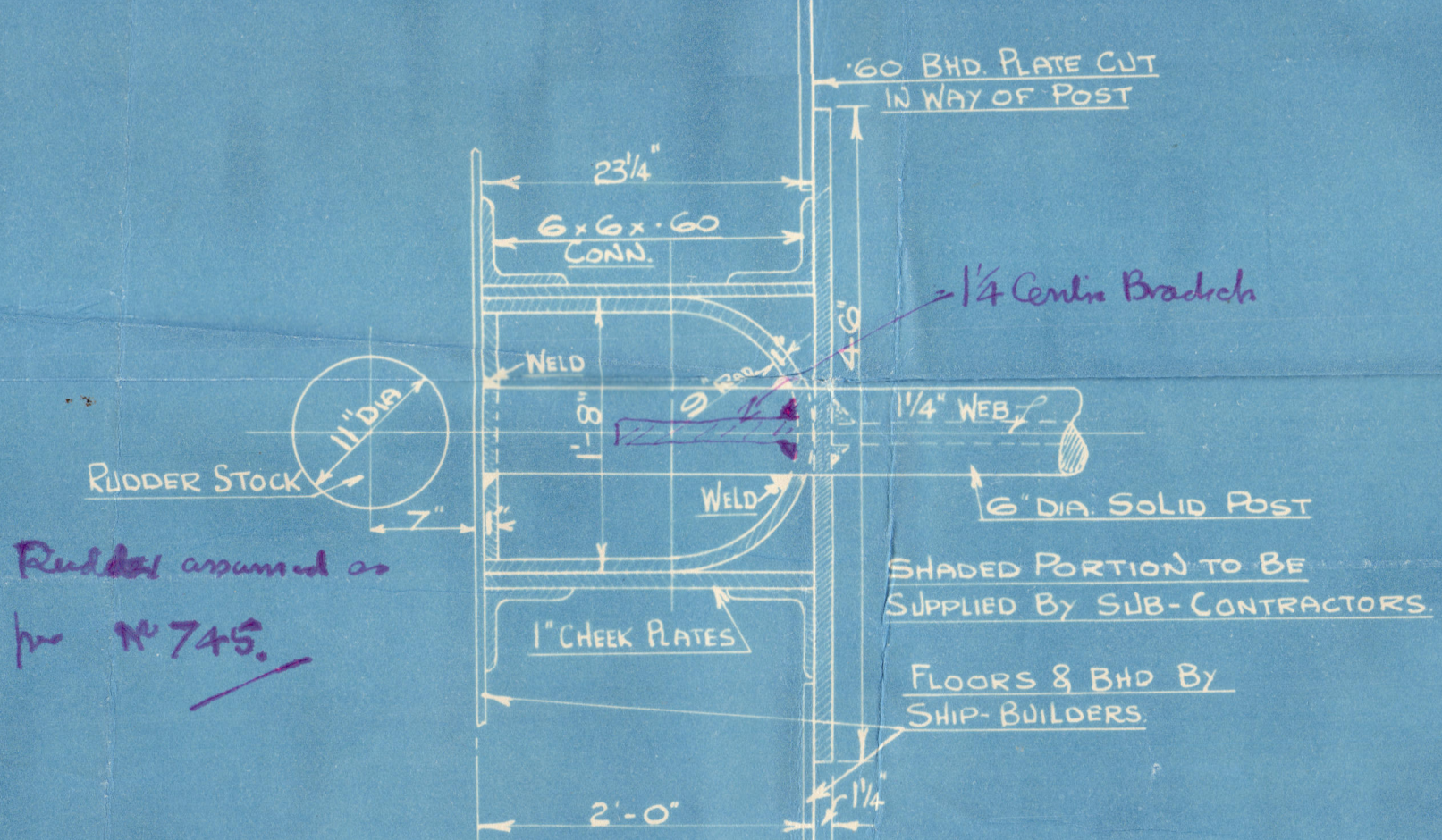
SHIP No 746

SCALE: 1/2" = 1'
DETAILS: 1" = 1'

PRINCIPAL DIMENSIONS
LENGTH B.P. = 477'-0"
BREADTH M.B. = 68'-0"
DEPTH M.B. = 26'-0"
DRAFT = 28'-0"
SPEED = 11 1/2 KNOTS

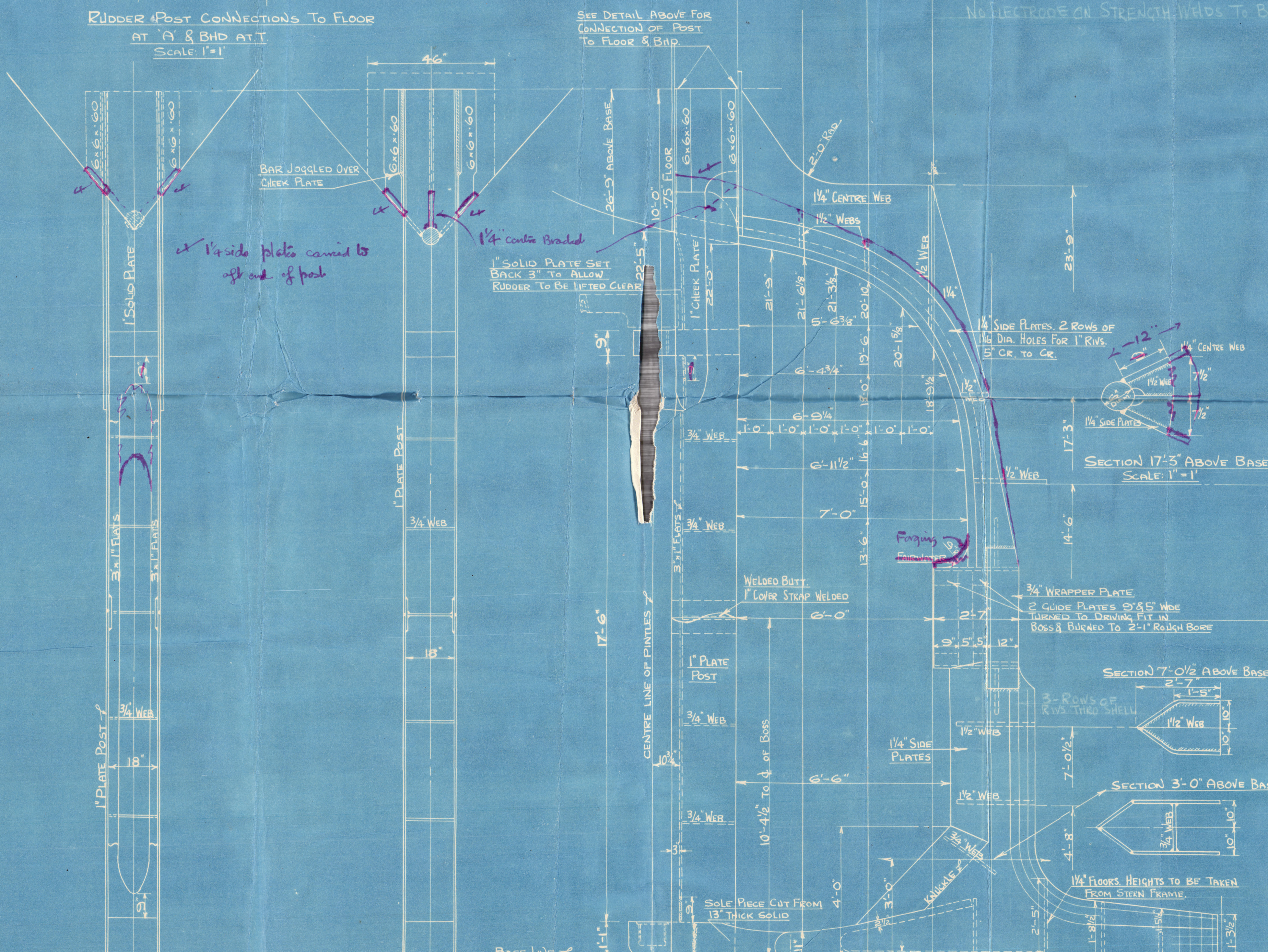
TO LLOYD'S SURVEY & REQUIREMENTS

NO ELECTRODE ON STRENGTH WELDS TO BE LESS THAN 1/4"



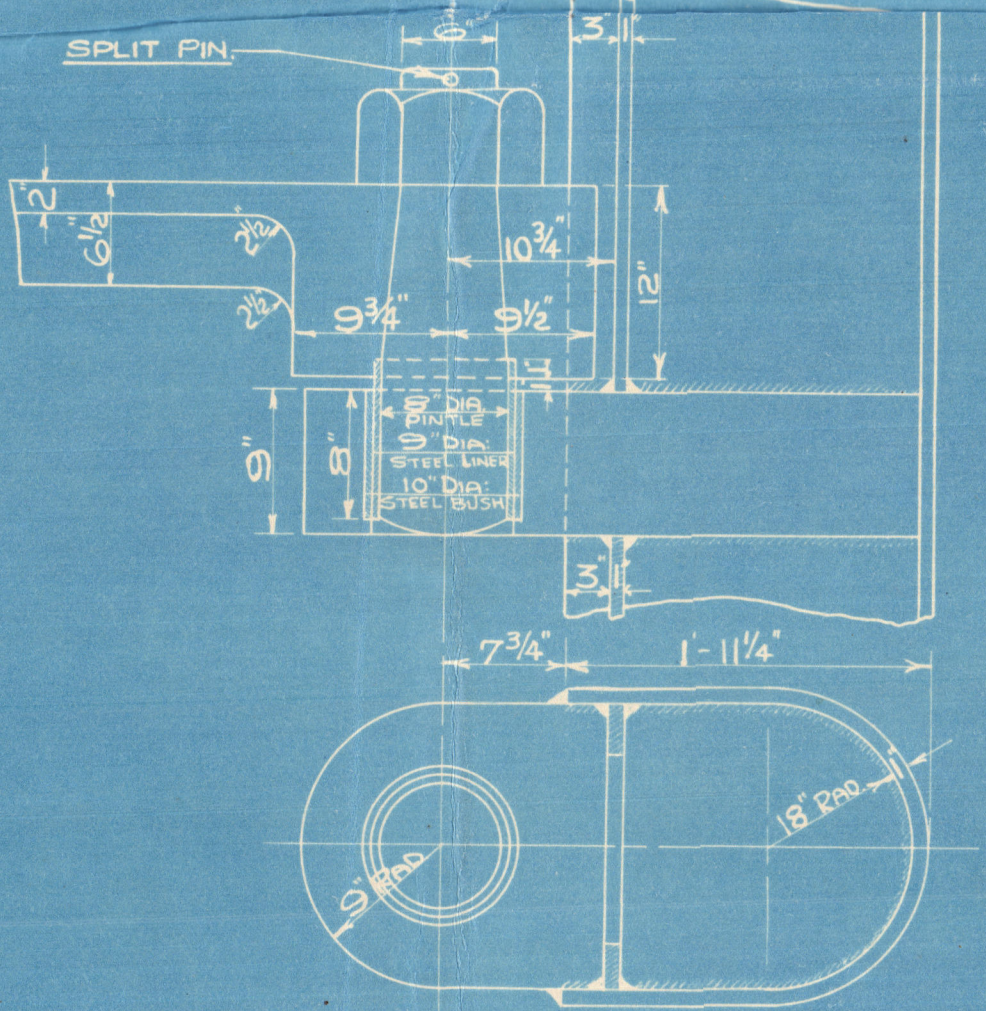
RUDDER POST CONNECTIONS TO FLOOR AT A & BND AT T
SCALE: 1" = 1'

SEE DETAIL ABOVE FOR CONNECTION OF POST TO FLOOR & BND

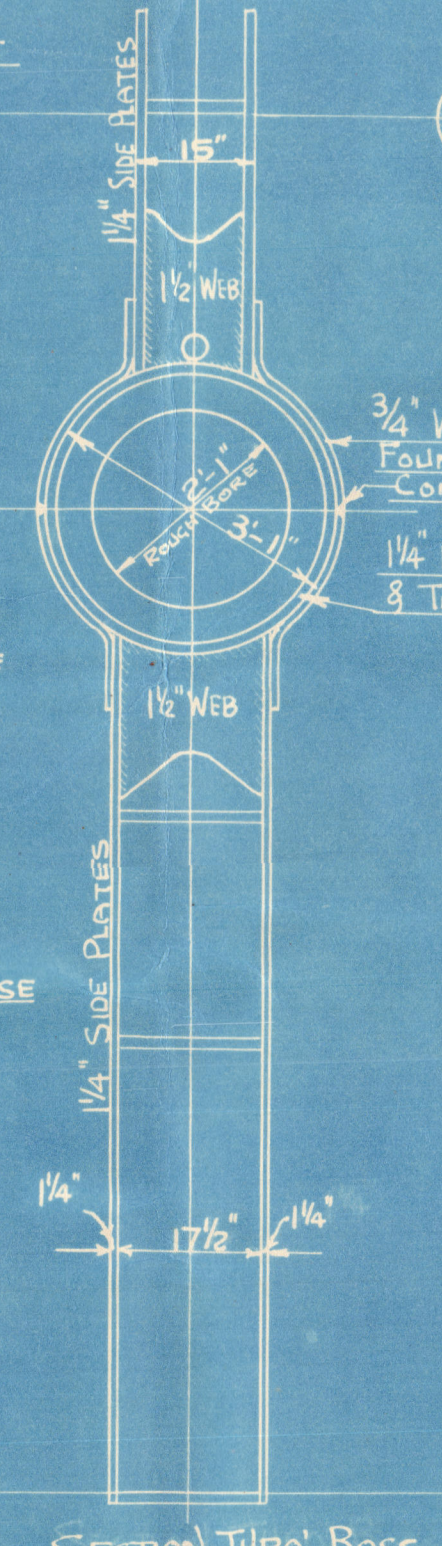


ELEVATION 3/4" FORWARD OF A FRAME

SECTION LOOKING FORWARD



PLAN OF UPPER GUDGEON AND PINTLE
SCALE: 1" = 1'



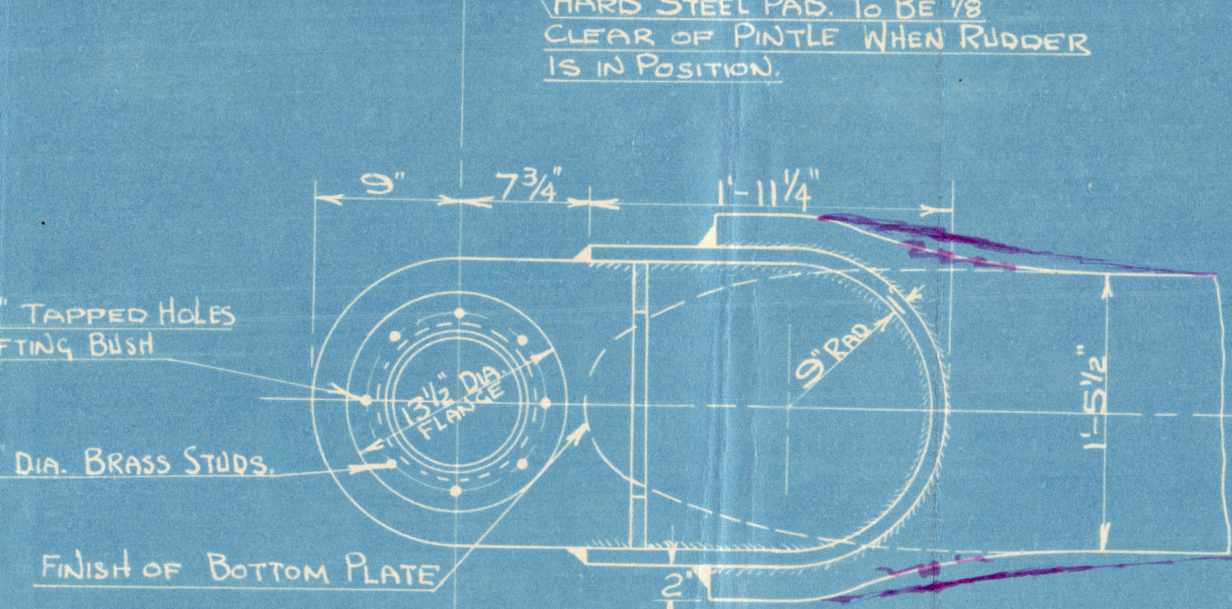
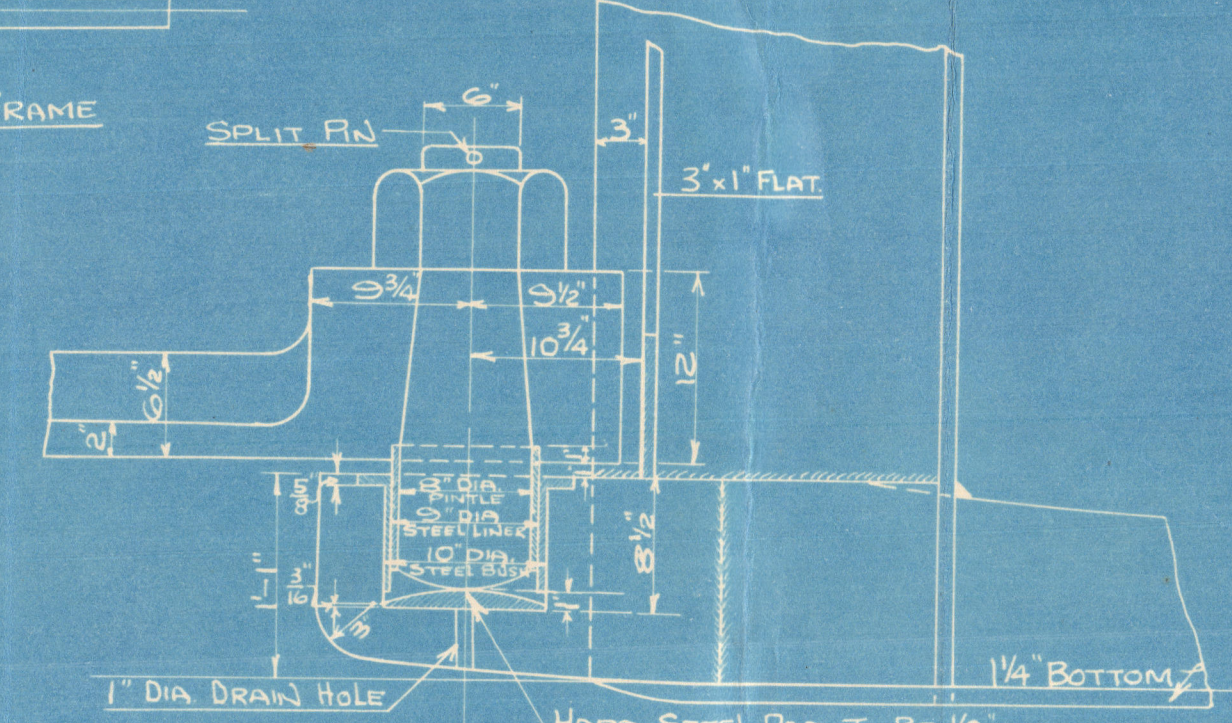
SECTION 17'-3" ABOVE BASE
SCALE: 1" = 1'

SECTION 7'-0 1/2" ABOVE BASE

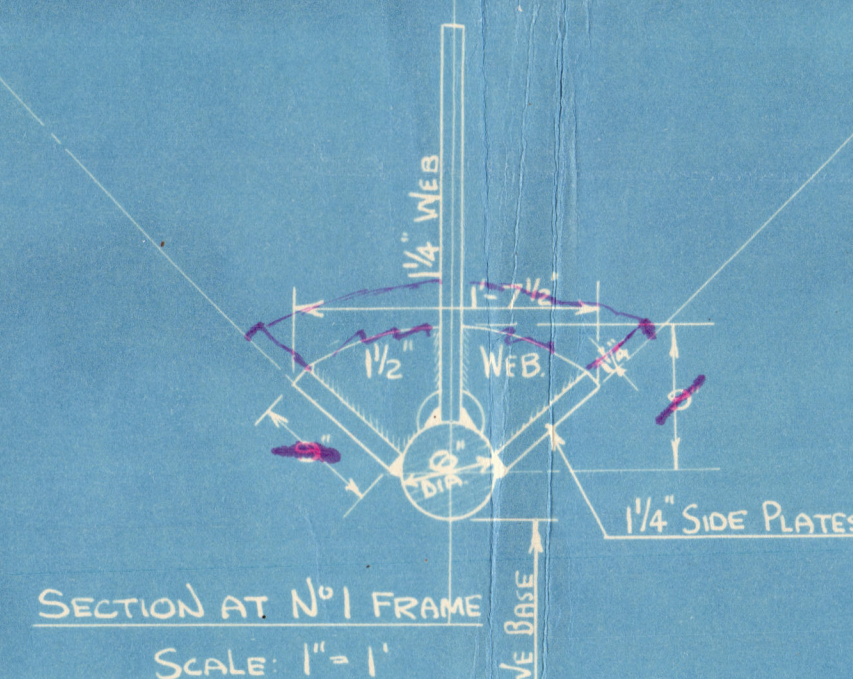
SECTION 3'-0" ABOVE BASE

SECTION THREE BOSS

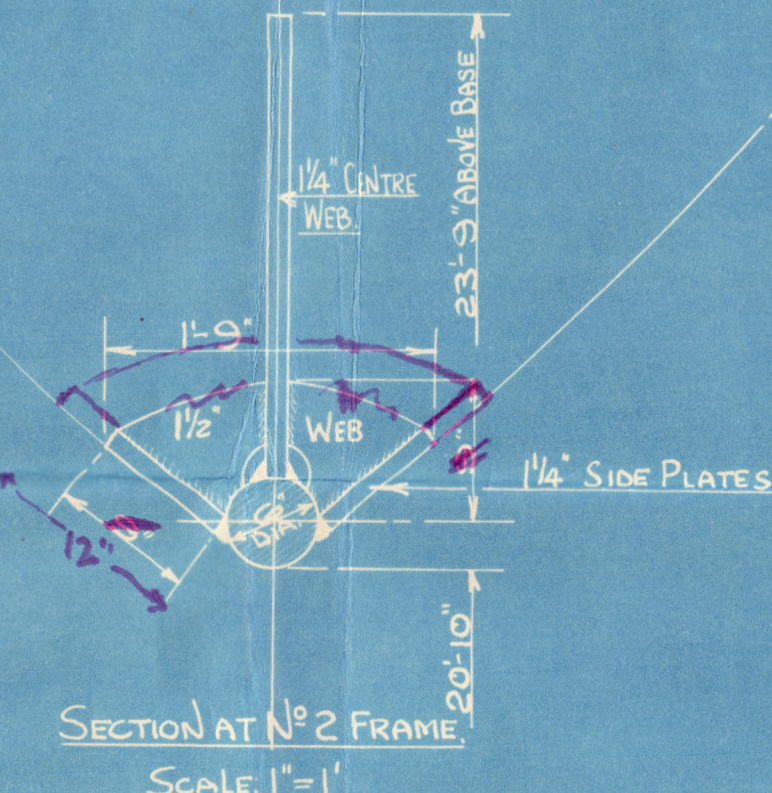
DETAIL OF END OF STERN FRAME
SCALE: 1/2" = 1'



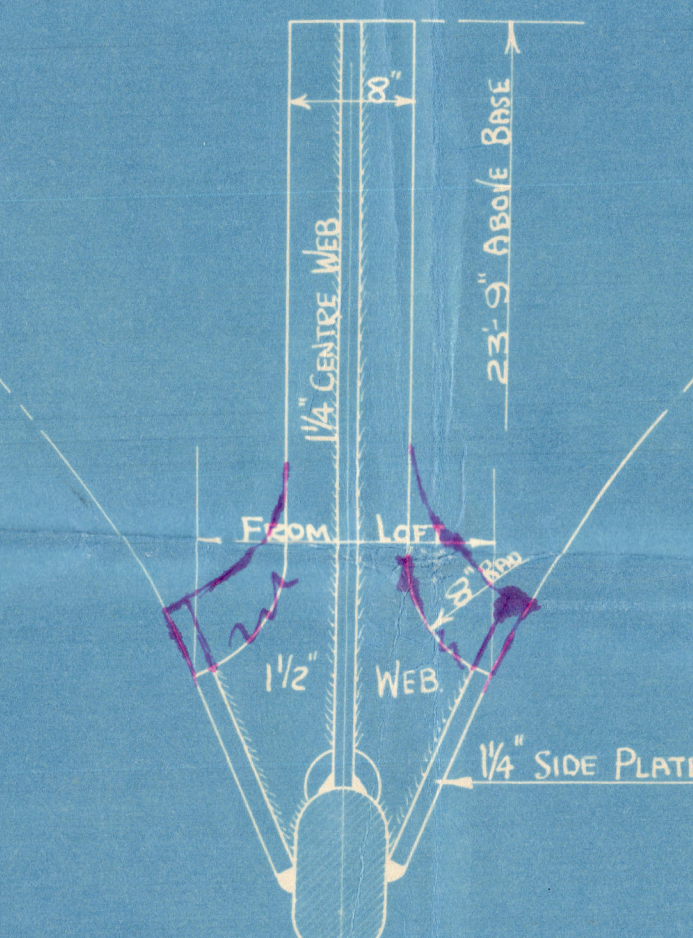
LOWER GUDGEON & PINTLE
SCALE: 1" = 1'



SECTION AT No 1 FRAME
SCALE: 1" = 1'



SECTION AT No 2 FRAME
SCALE: 1" = 1'



SECTION 1/2" AFT OF No 3 FR
SCALE: 1/2" = 1'

SIR. T. LAING & SONS

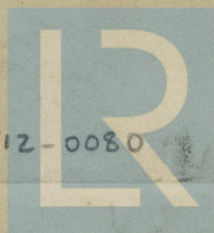
YARD No. 746

STERNFRAME.

"Nearfield"

BUNDERLAND RPT. NO. 33618.

003503-003512-0080



© 2020

Lloyd's Register
Foundation