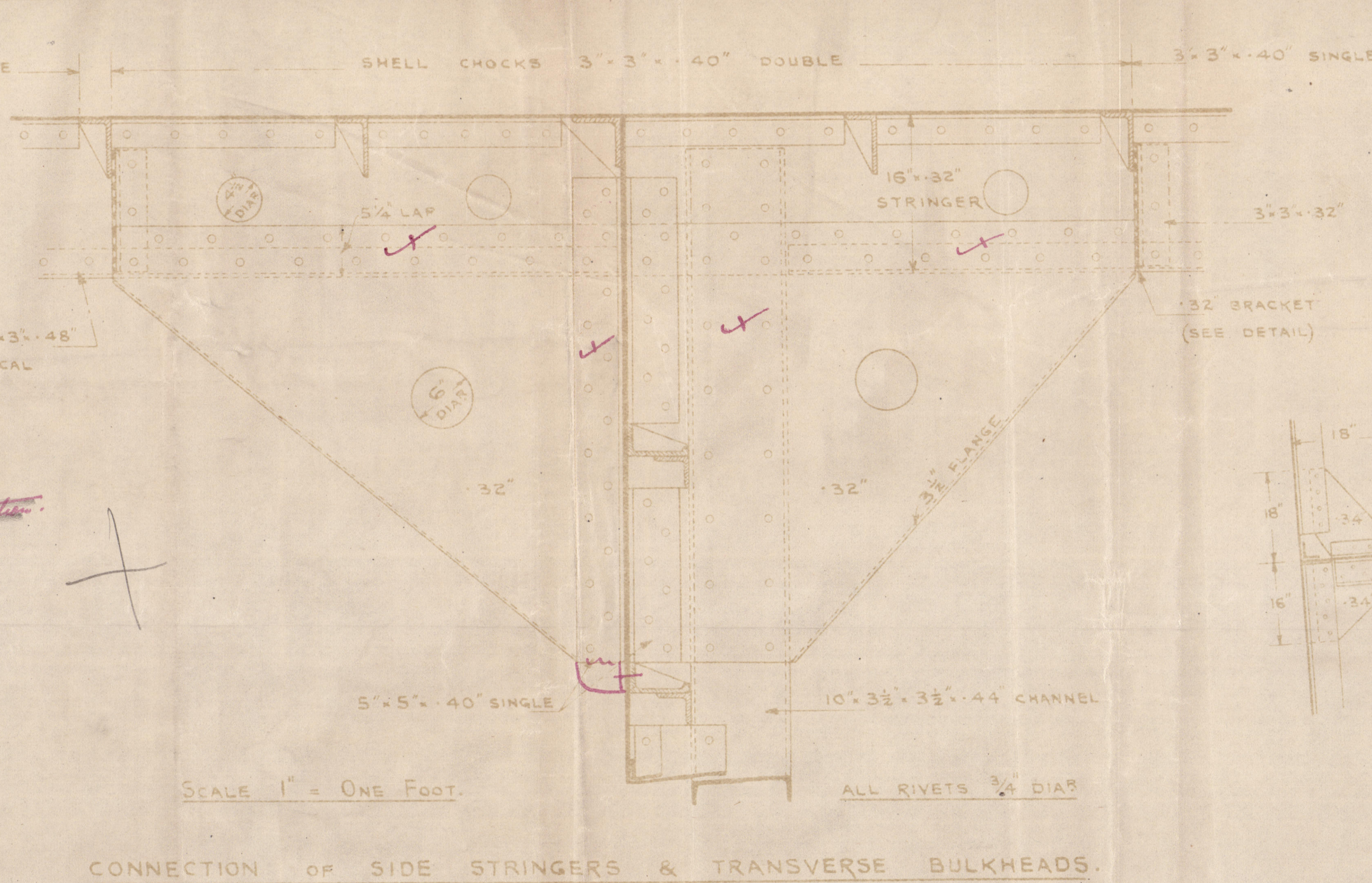
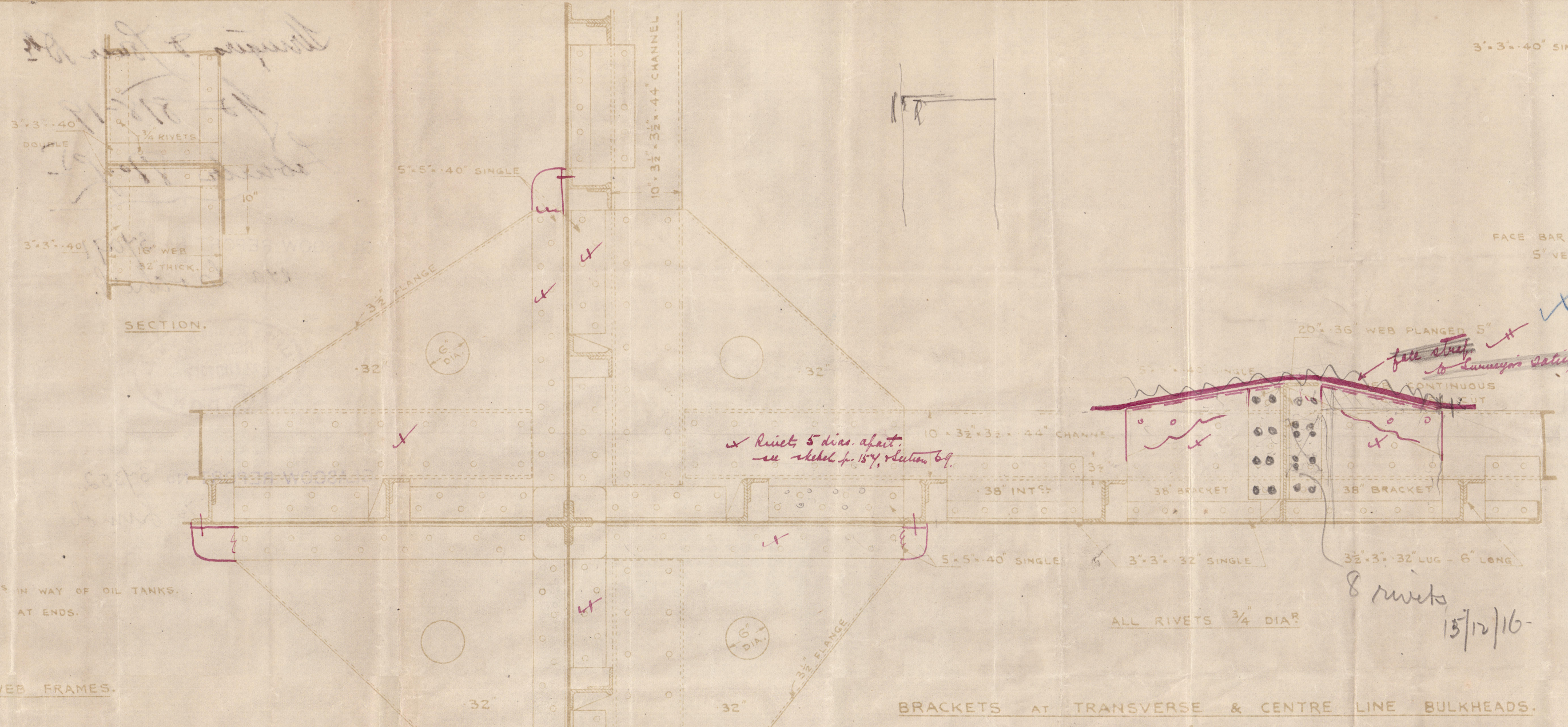
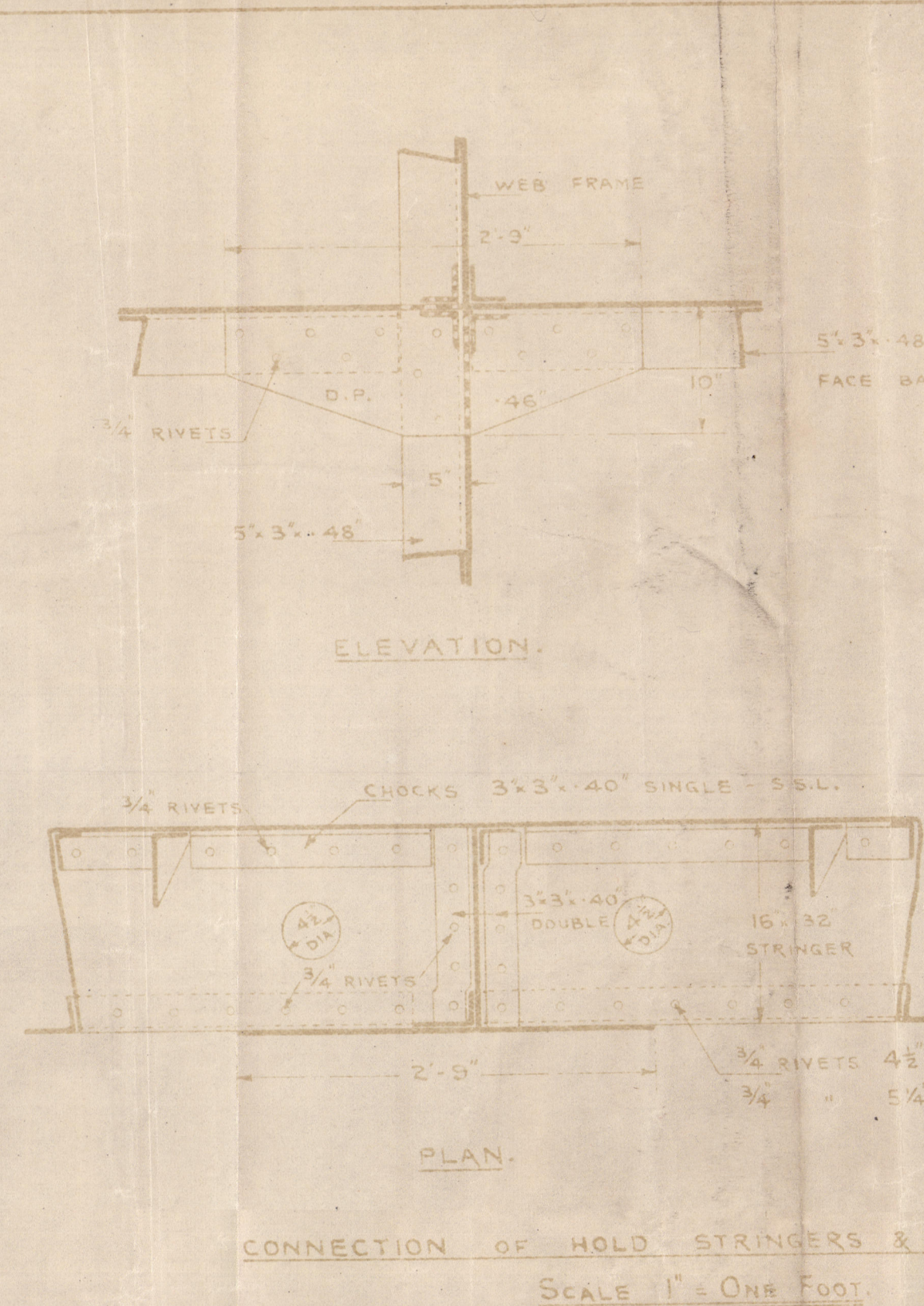
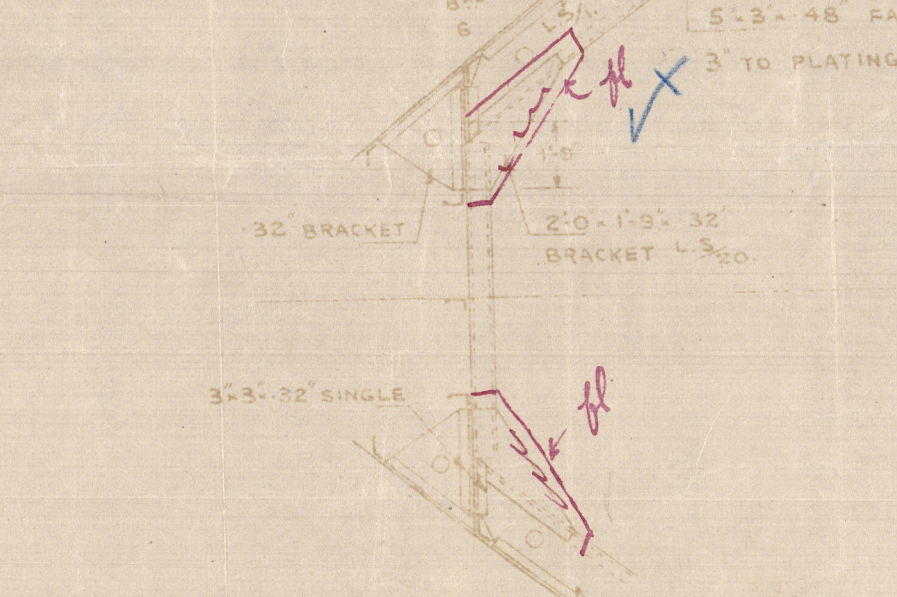
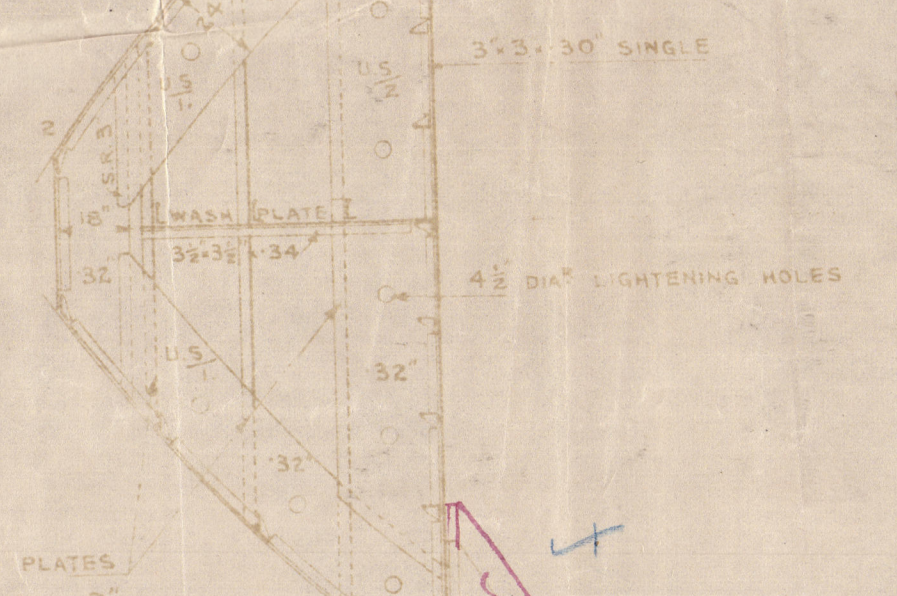
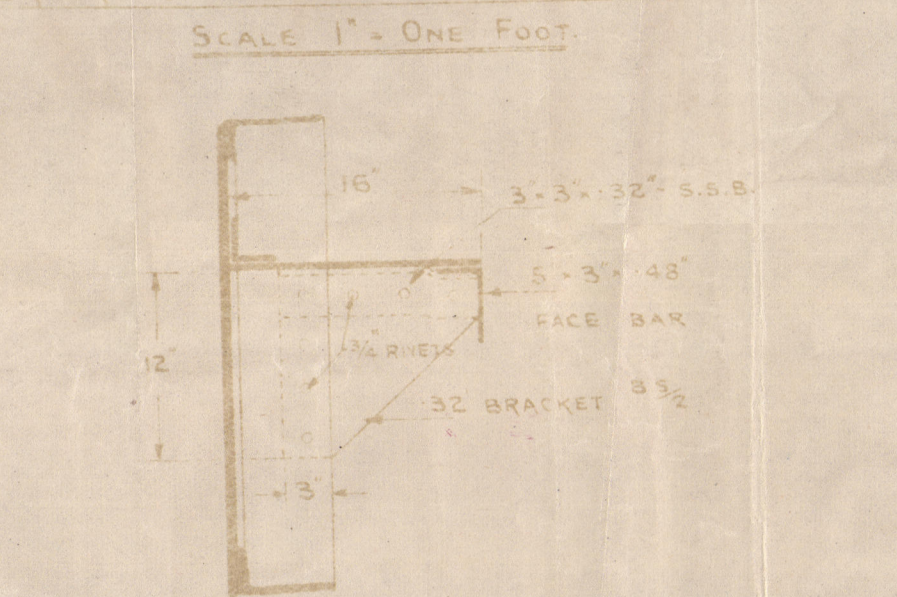
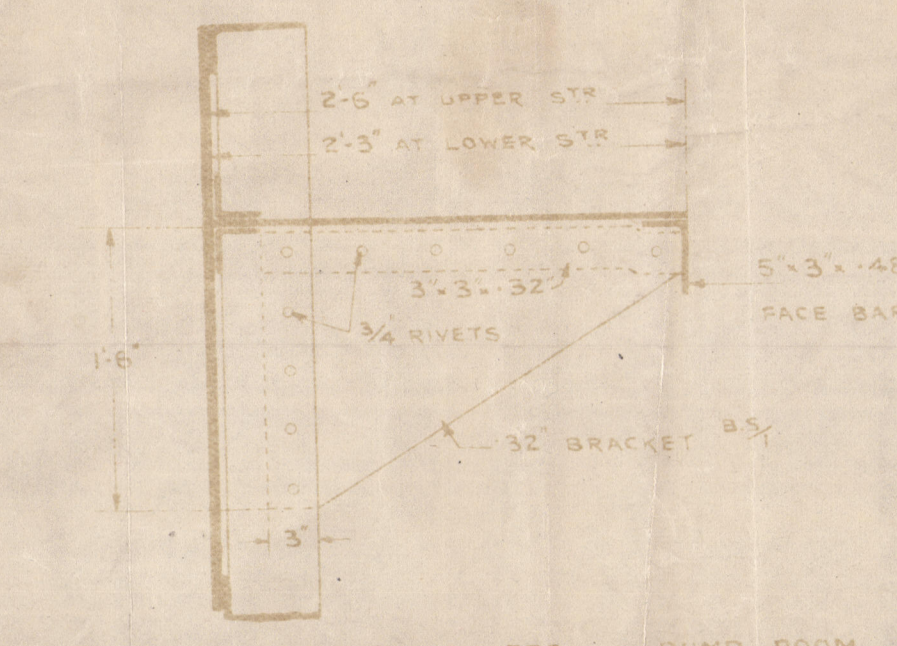
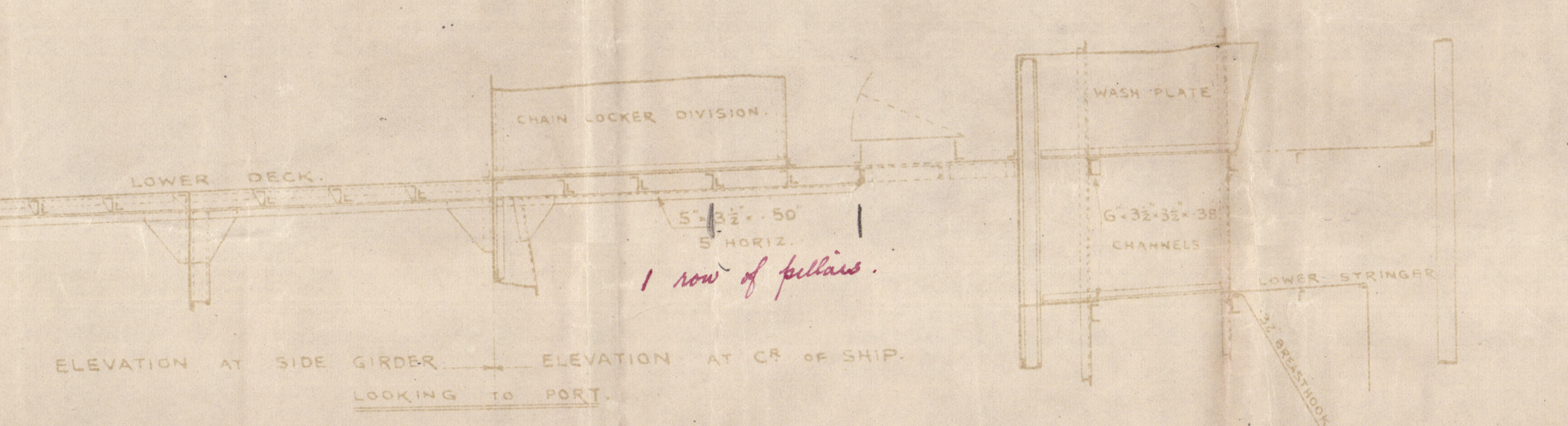
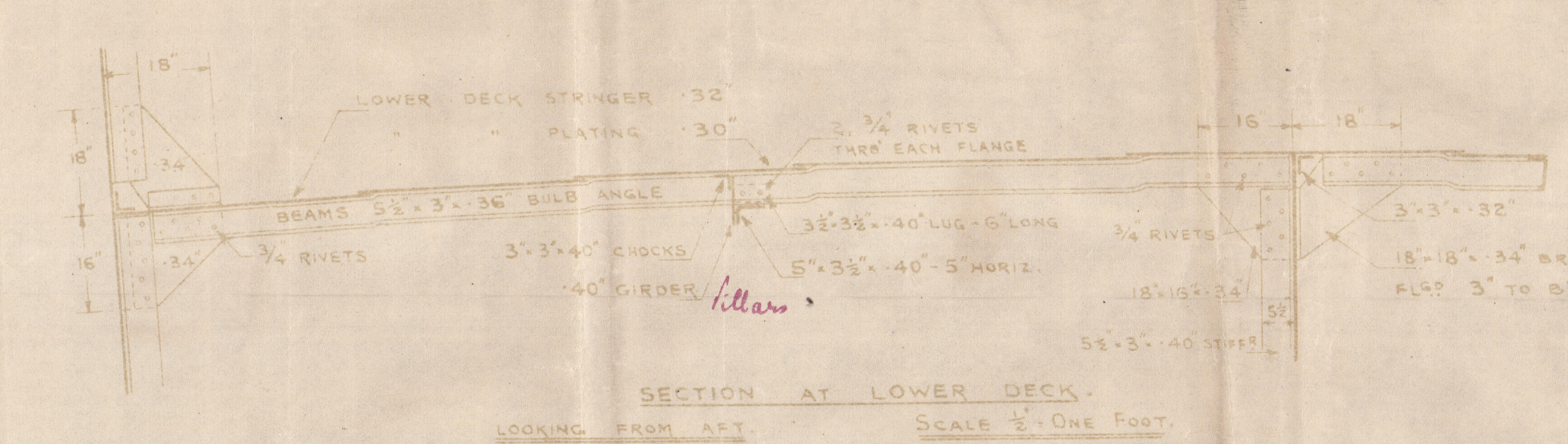


11.12.16 RFA LARCHOL and LIMO
LOBNITZ & CO LTD
 ENGINEERS & SHIPBUILDERS
 RENFREW.



RIVETING.

ITEM.	SEAM OR LAP.	WIDTH.	DIA. OF RIVETS.	SPACING.
LOWER DECK PLATING SEAMS.	S.S.	2 1/2"	5/8"	2 1/2"
BUTTS.	D.S.	4"	5/8"	2 1/2"
TO BEAMS.				3 1/2"
TO STRINGER BAR (SEE SKETCH).				2 1/2"



Compare with inserted plans

drawn after from previous plans 15/12/16

8 rivets 15/12/16

cf. 9.12.16

Strangers & Power Dr
No 818-19
Labrador No. 25

GLASGOW REPORT No. 37091
R. F. A. Larchol.



GLASGOW REPORT No. 37352
R. F. A. Limol



© 2020

Lloyd's Register
Foundation

003503-003512-0003