

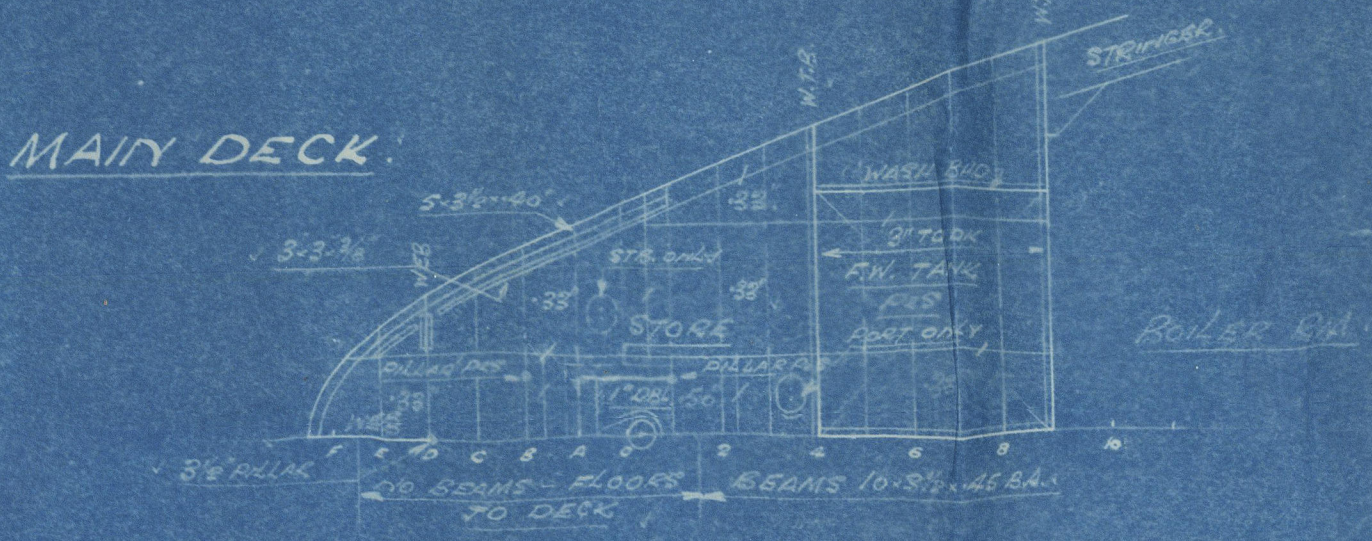
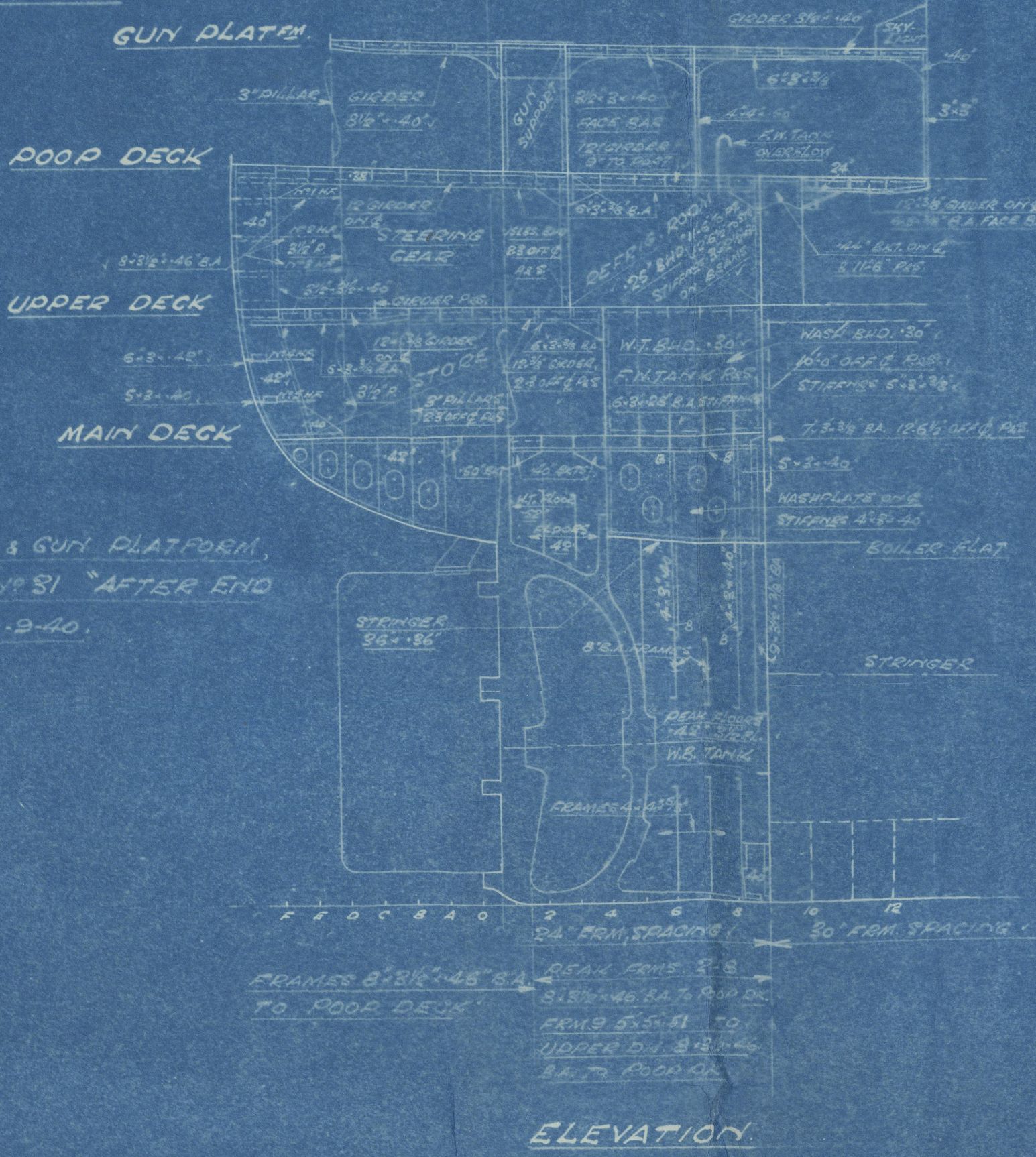
Nos 1067/8.

AFTER END SCANTLINGS.

SCALE:- 1/8" = 1 FOOT.



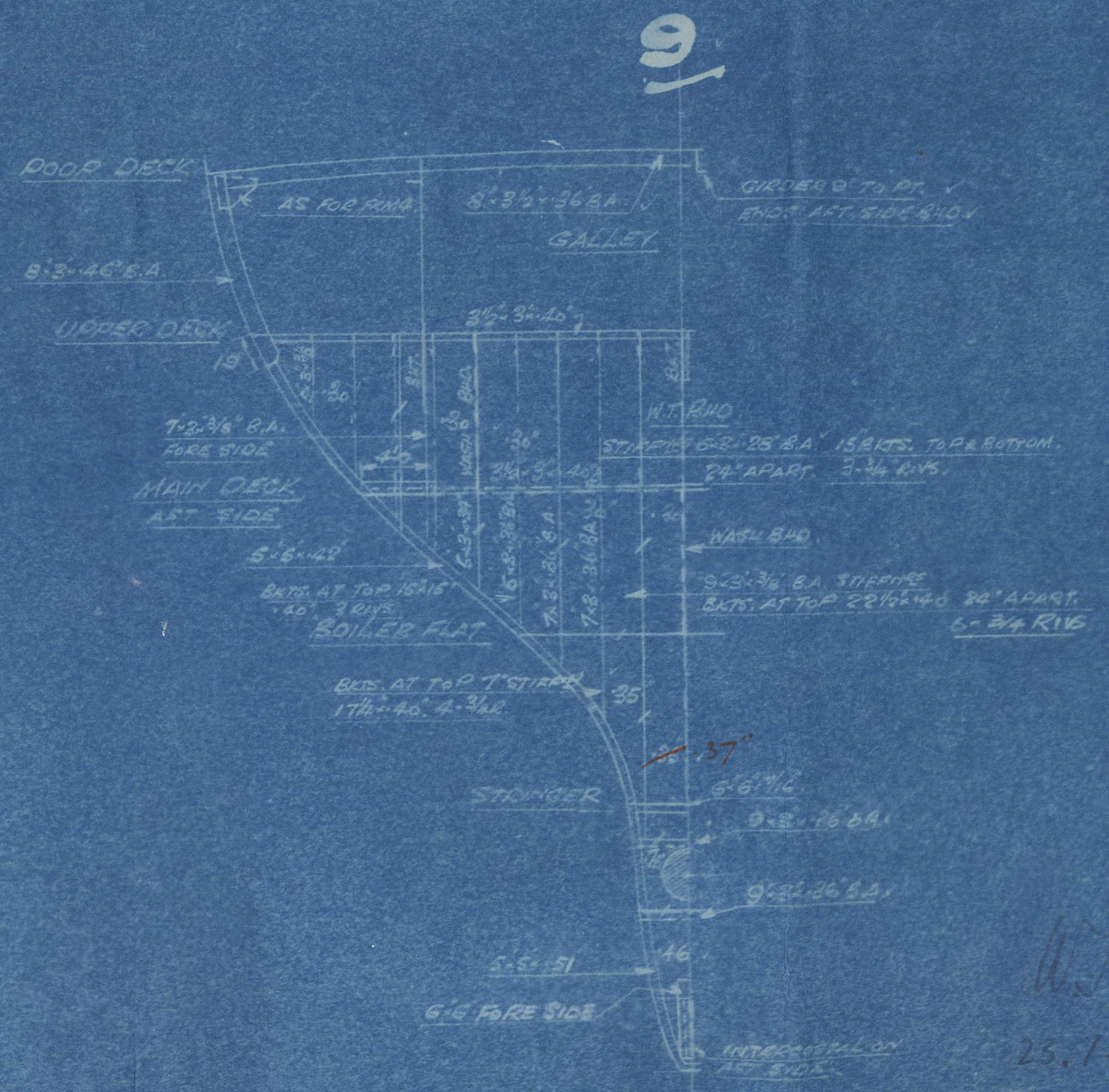
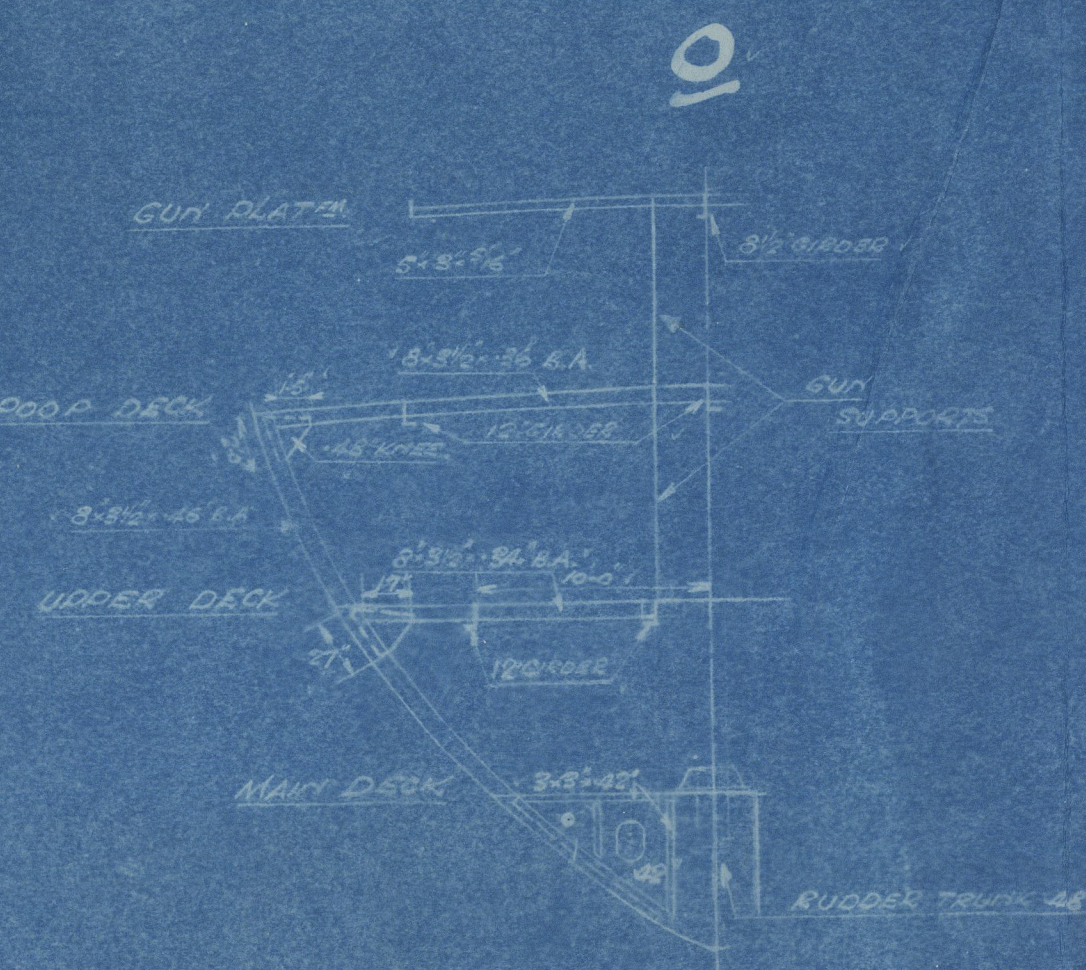
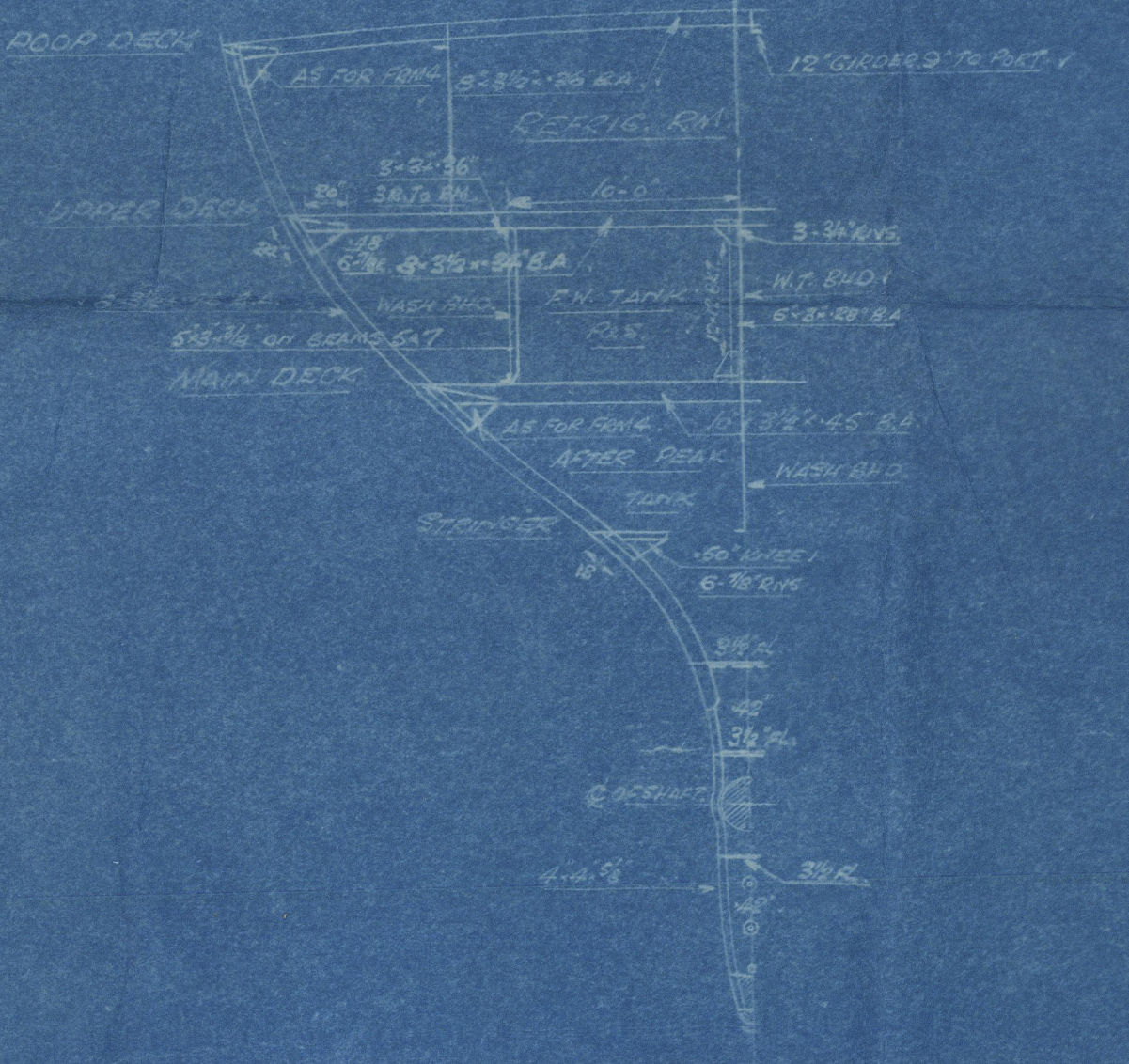
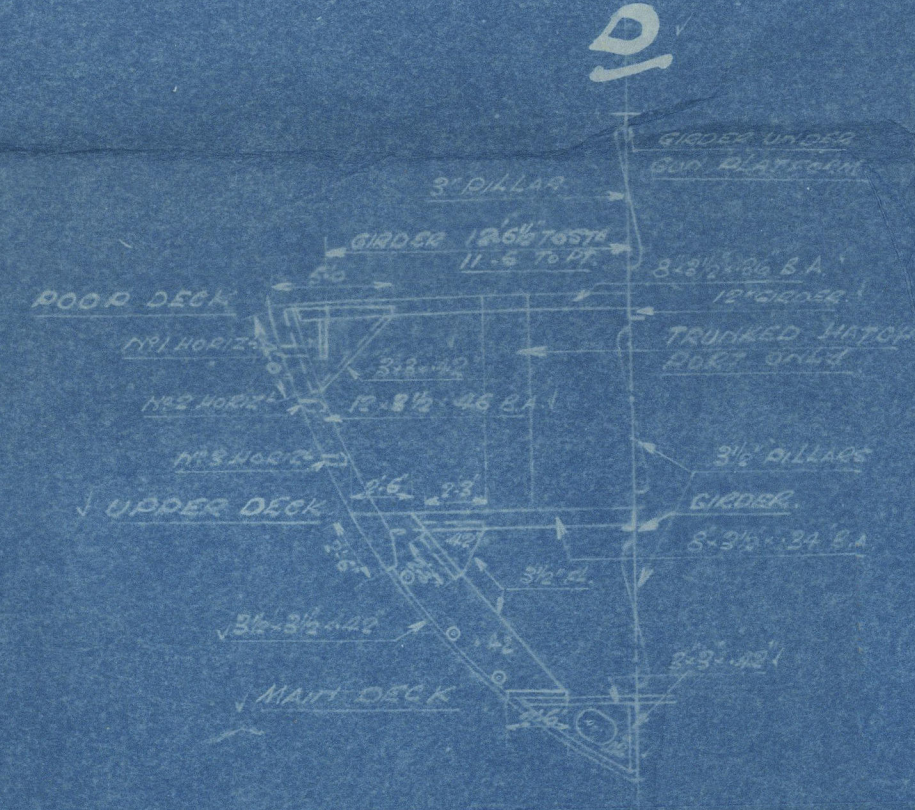
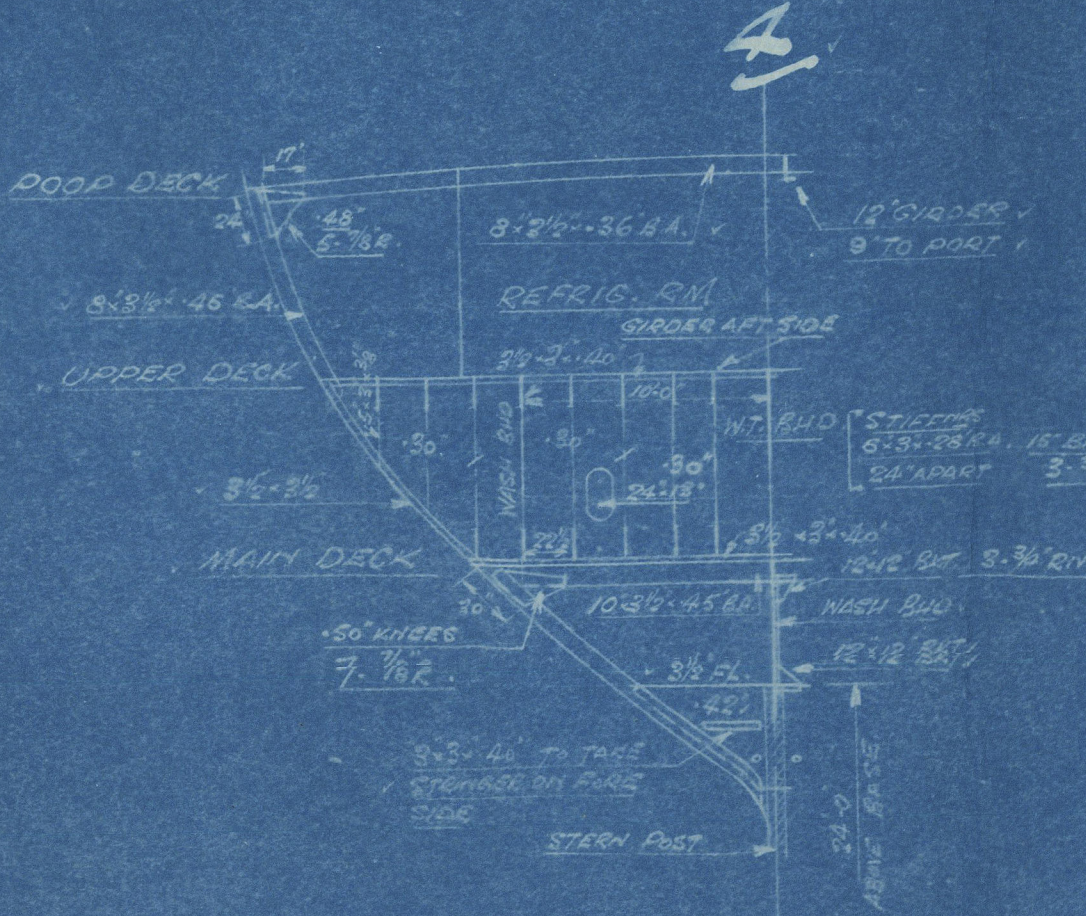
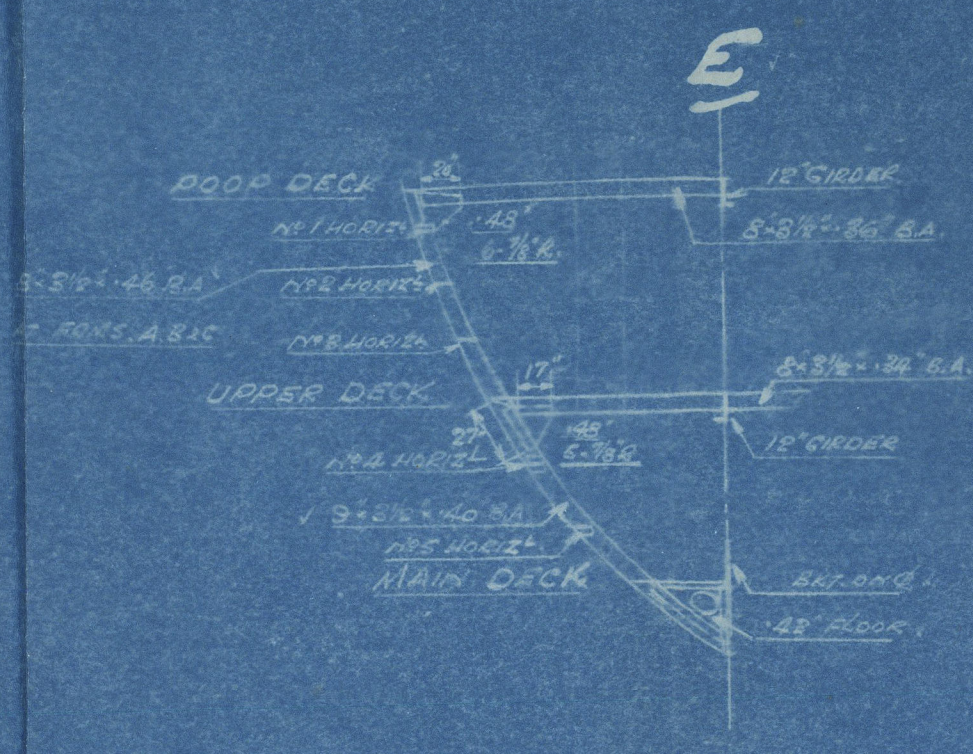
FOR SCANTLINGS OF BOAT DK. & GUN PLATFORM, POOP & UPPER DECKS SEE TMS 51 "AFTER END CONSTRUCTION" APPROVED 30.2.40.



STRINGER IN AFTER PEAK.



TYPICAL SECTIONS -
DRAWN LOOKING AFT.



TMS 140



CL Nos

N^{os} 1067-8

1105-6

After End Scantlings.

RET TO LIV.

G. S. Empire McColl

LIVERPOOL:

Report No. 120372.



© 2020

Lloyd's Register
Foundation

003495-003502-0224