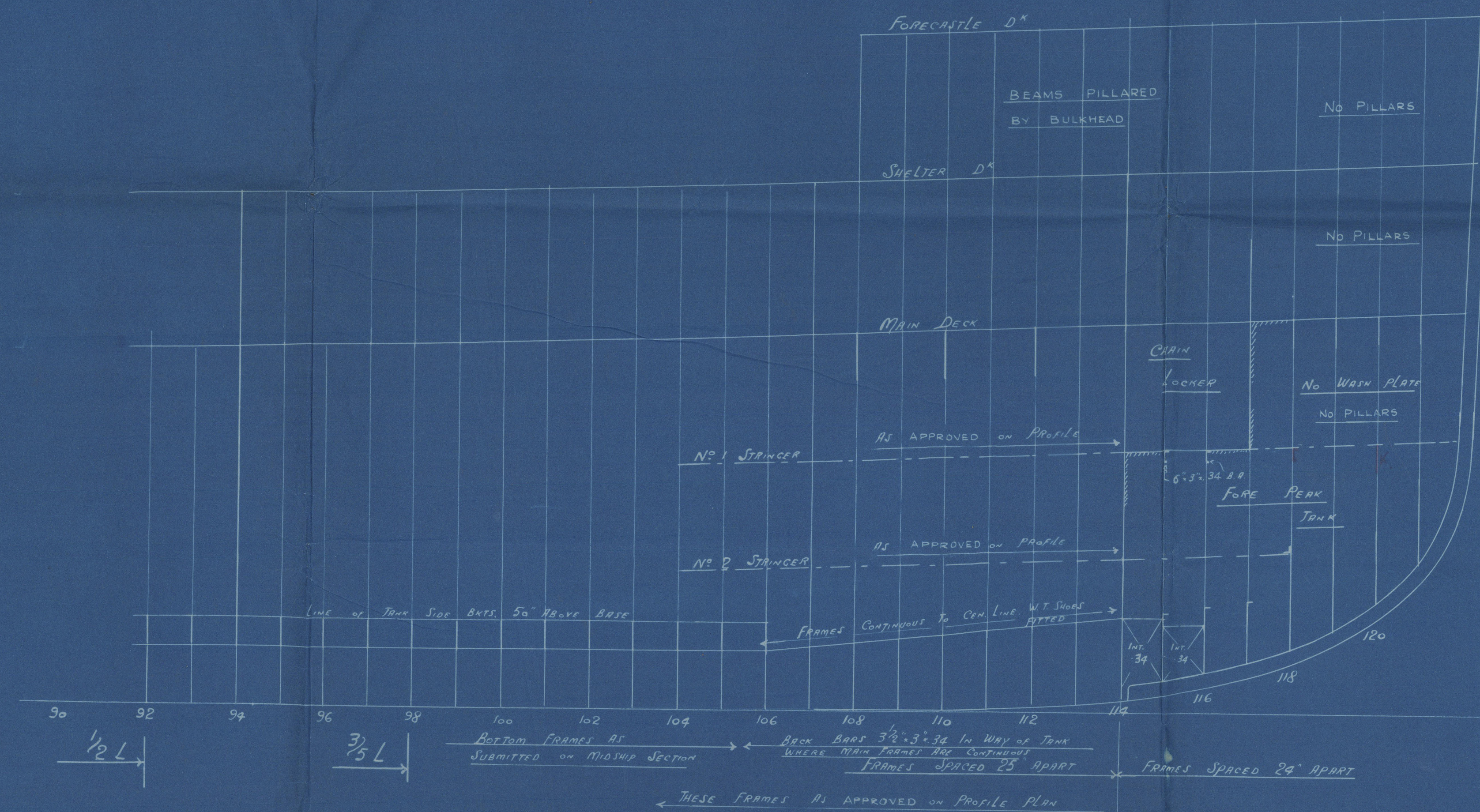


N^o 1268

PLAN of FORE PEAK BULK^h
AND PANTING ARRANGEMENTS

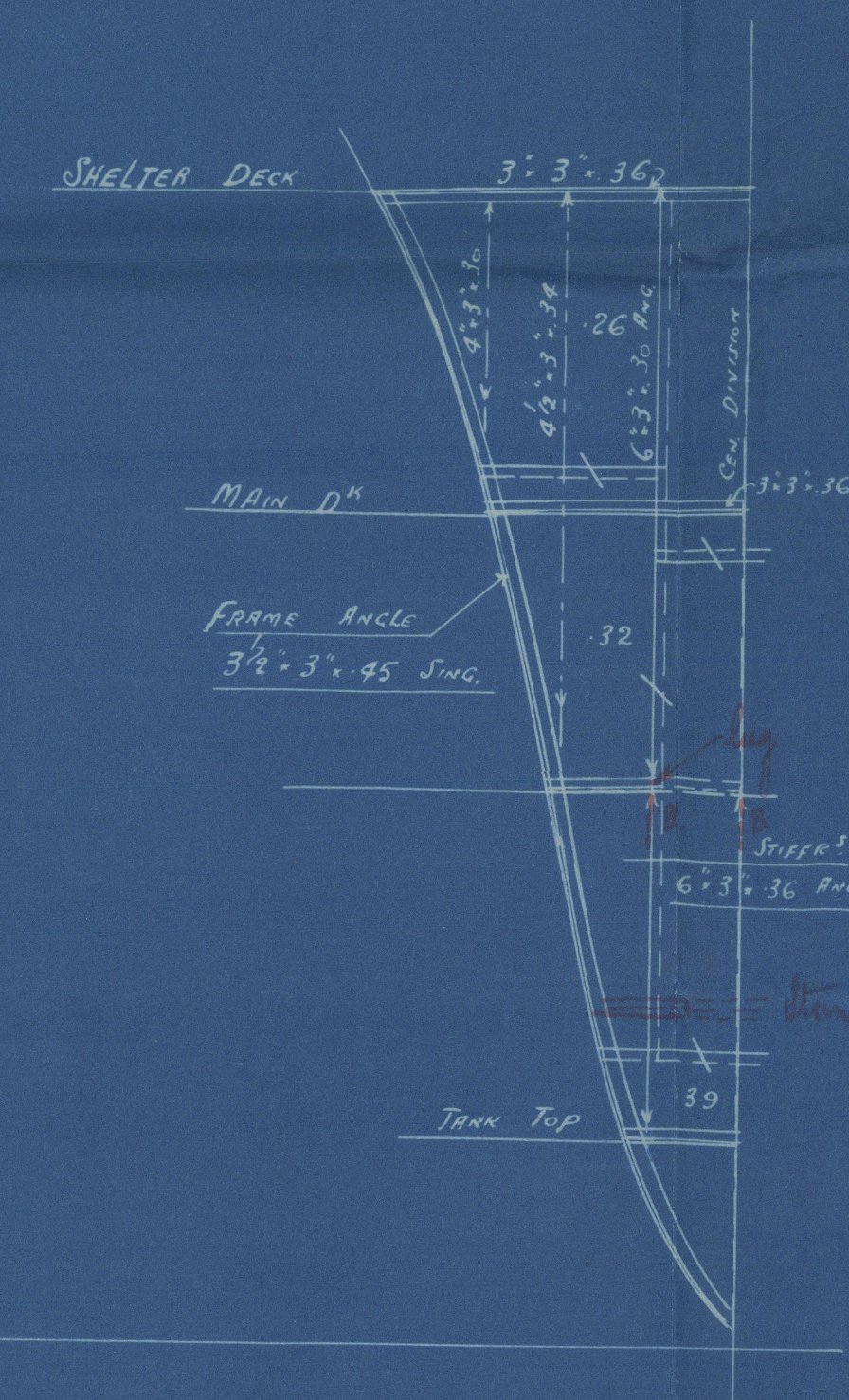
Scale $\frac{1}{4} \times 8 \frac{1}{2}'' = 1 \text{ FOOT}$

ELEVATION

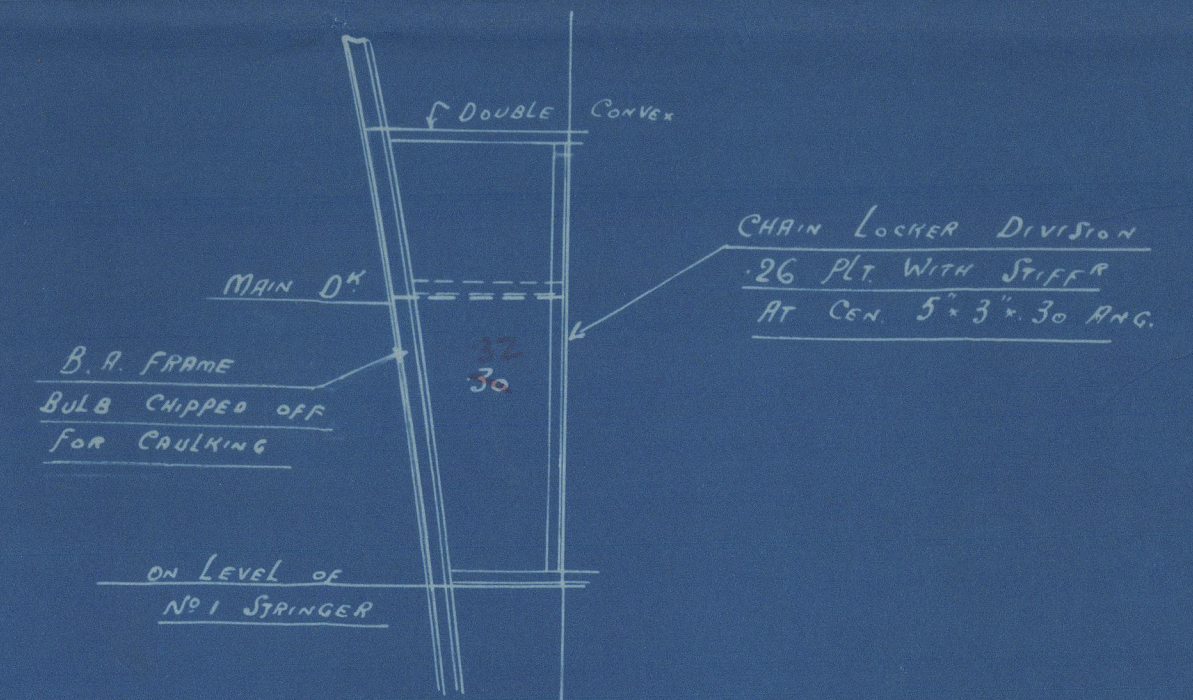


SECTION AT PEAK BUD

N^o 119 FRAME



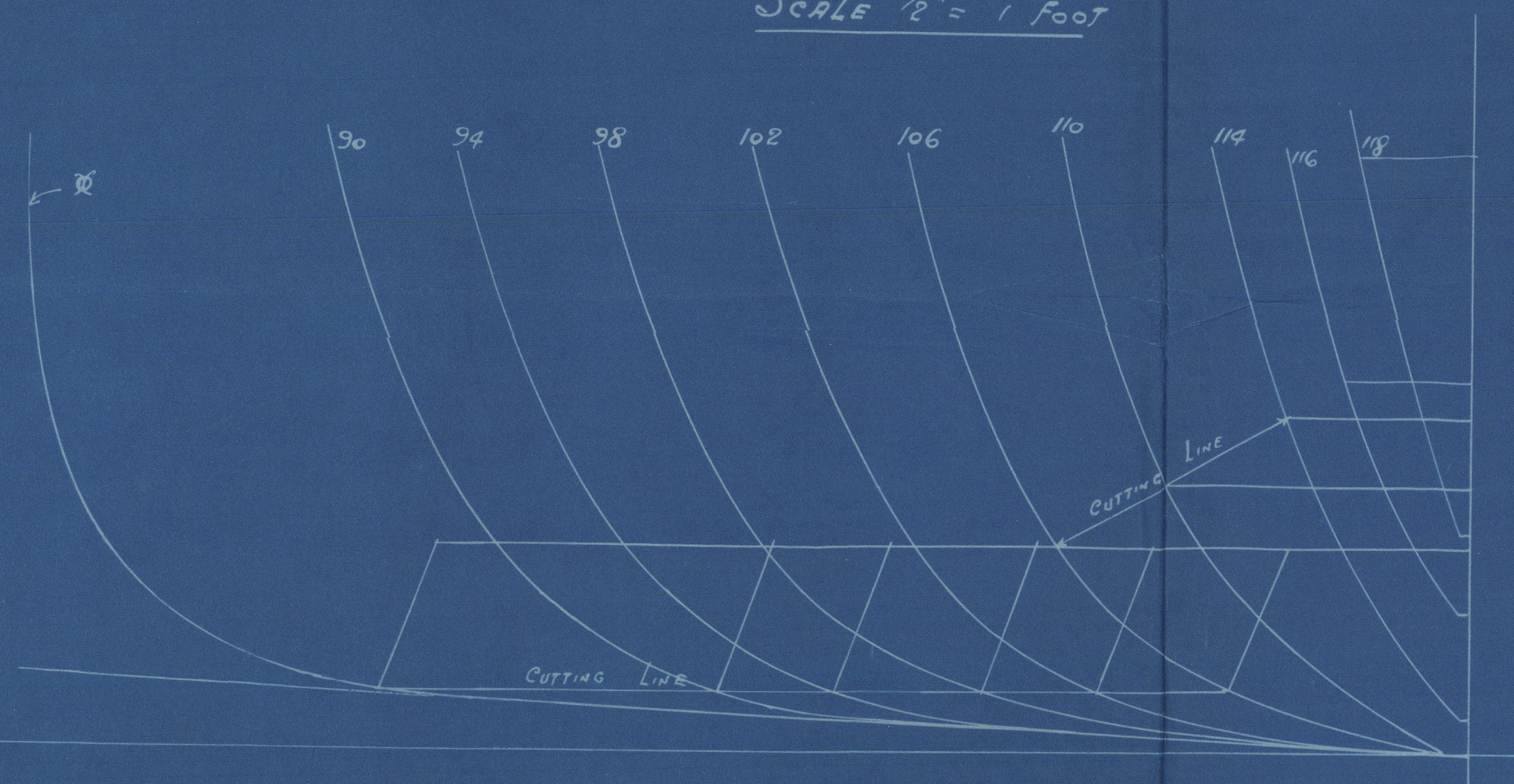
SECTION AT CHAM LOCKER BUD (FR 117)



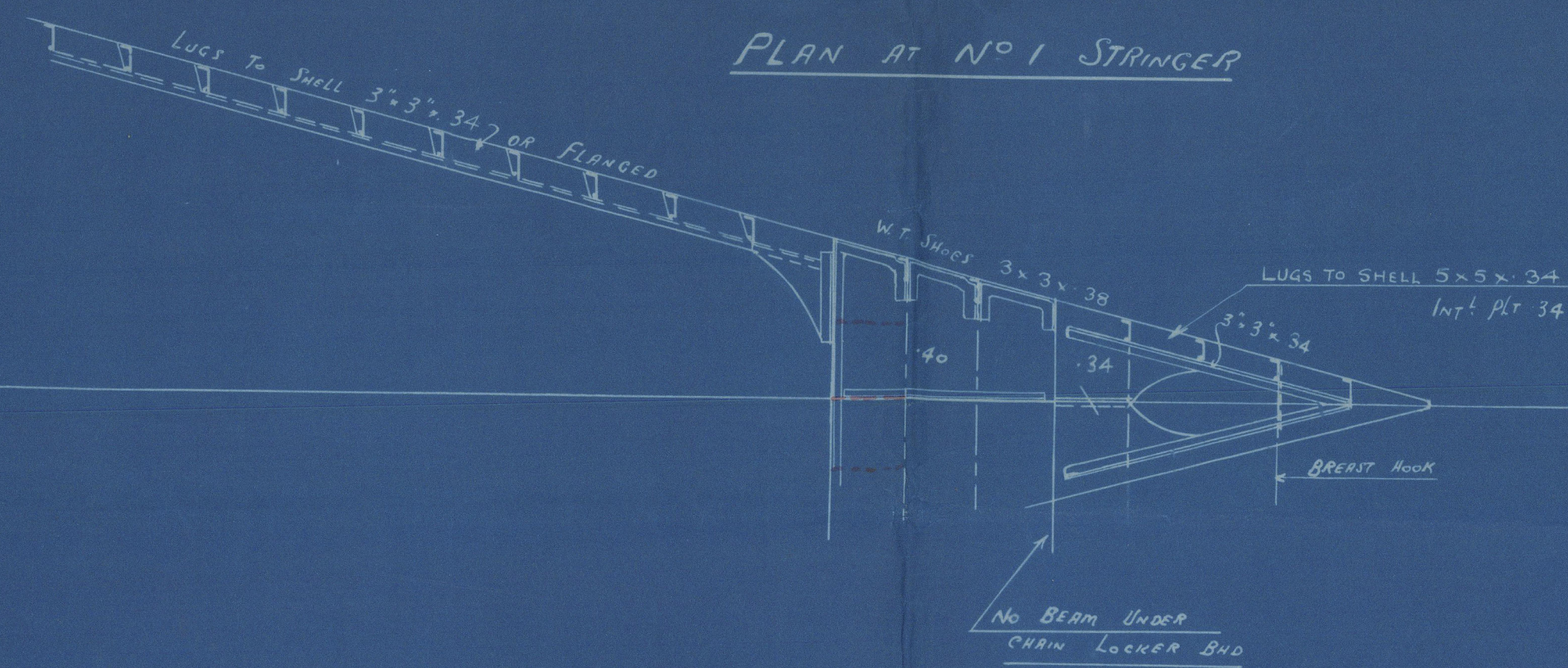
Rivets at end of stiffeners unless in brackets are fitted are to be close spaced

SECTIONS AT FORE END

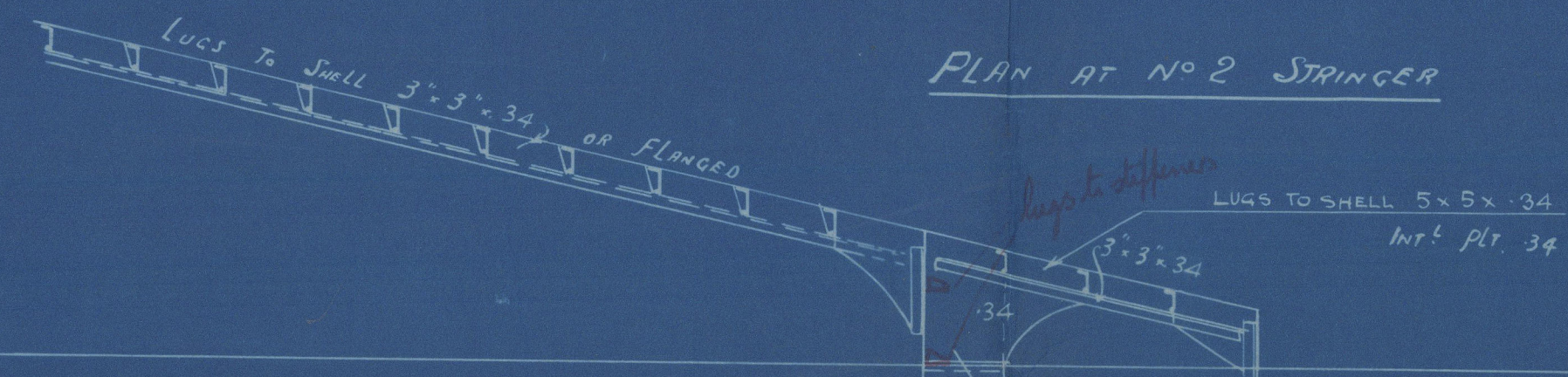
Scale $\frac{1}{2}'' = 1 \text{ FOOT}$



PLAN AT N^o 1 STRINGER

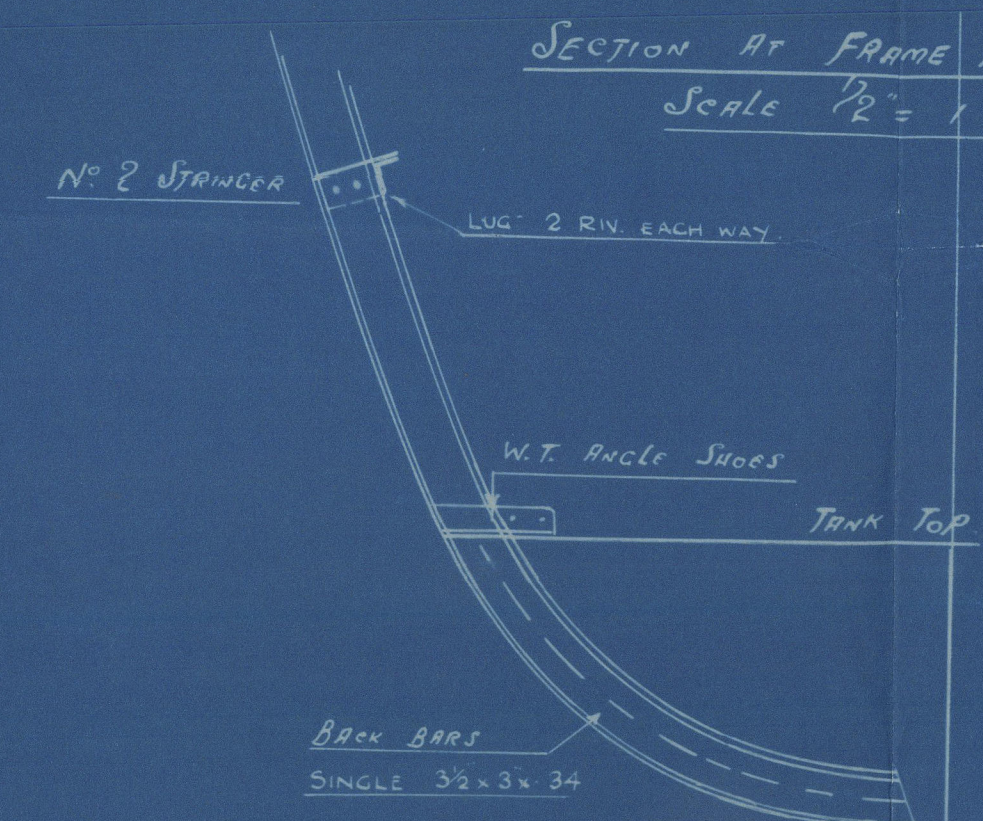


PLAN AT N^o 2 STRINGER

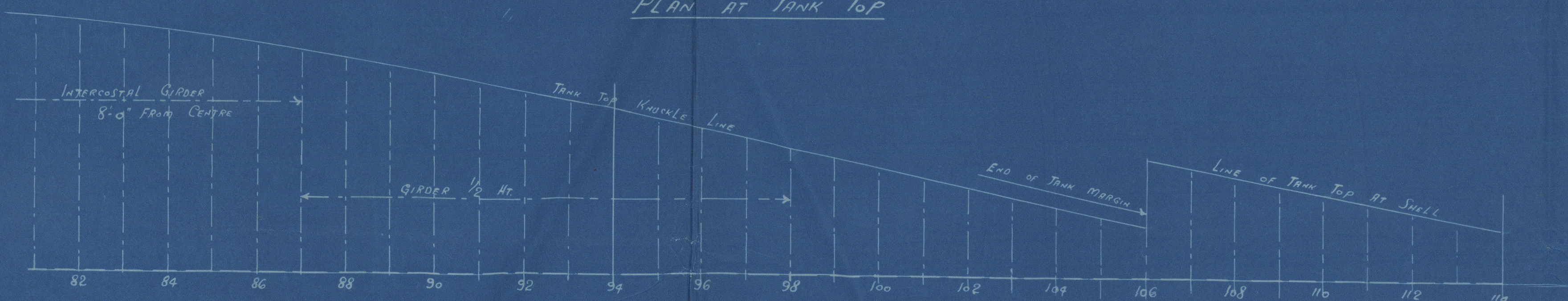


SECTION AT FRAME 102

Scale $\frac{1}{2}'' = 1 \text{ FT}$



PLAN AT TANK TOP



W.S.
29.9.27

Swan Hunter's No 1268

Fore Peak & Landing Aft.

(5)

S.S. "Alnwick"

NEWCASTLE ON TYNE.

Report No. 82605.



© 2020

Lloyd's Register
Foundation

003495-003502-0072