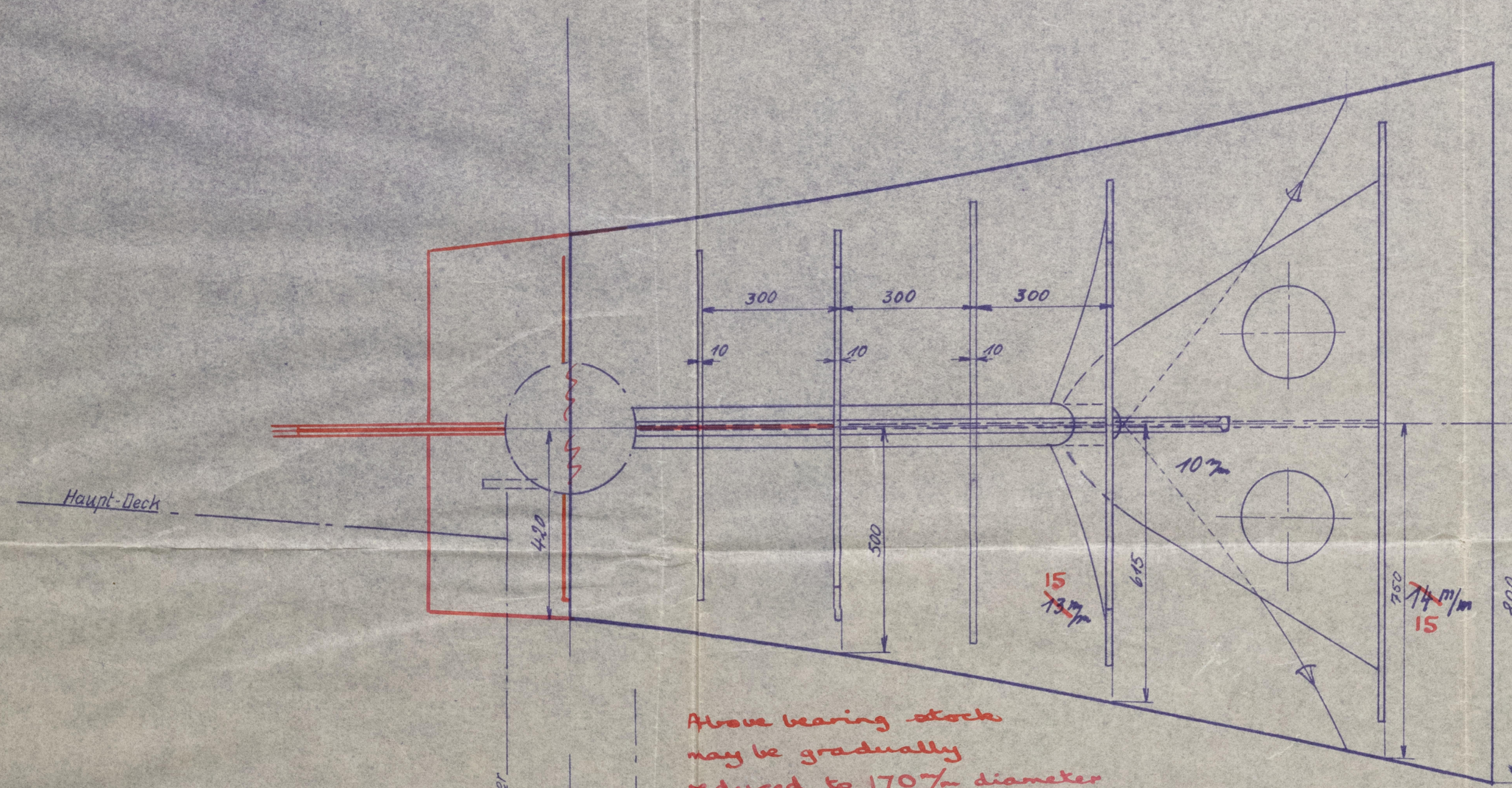
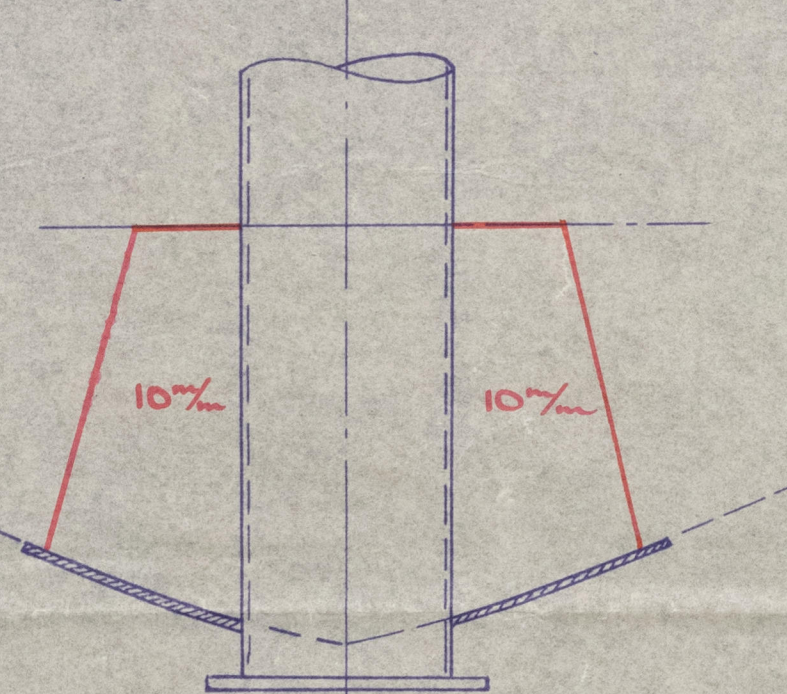


30 APR 1956

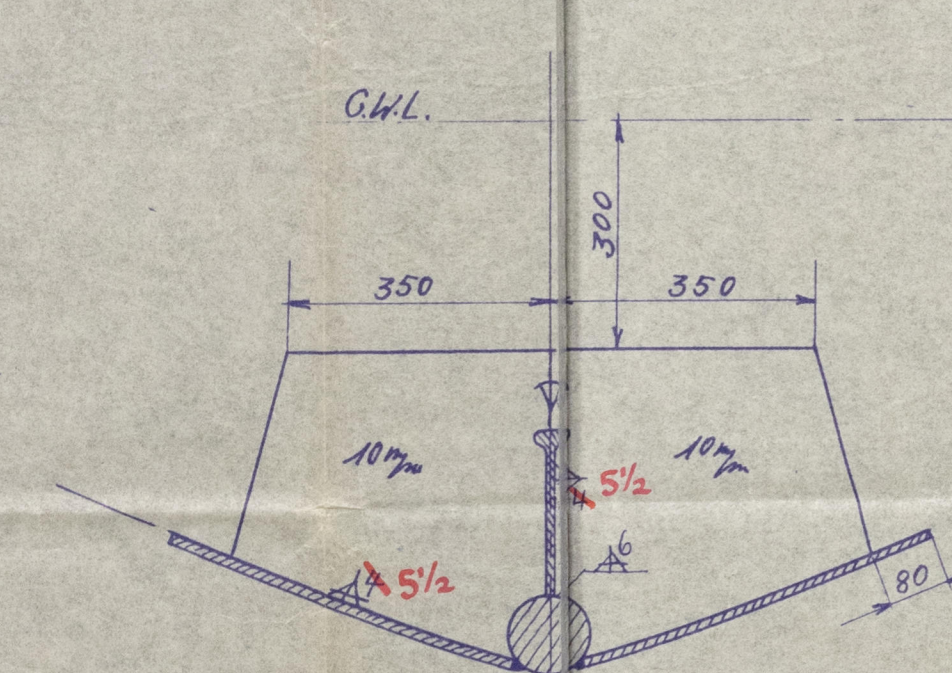
Ansicht von oben



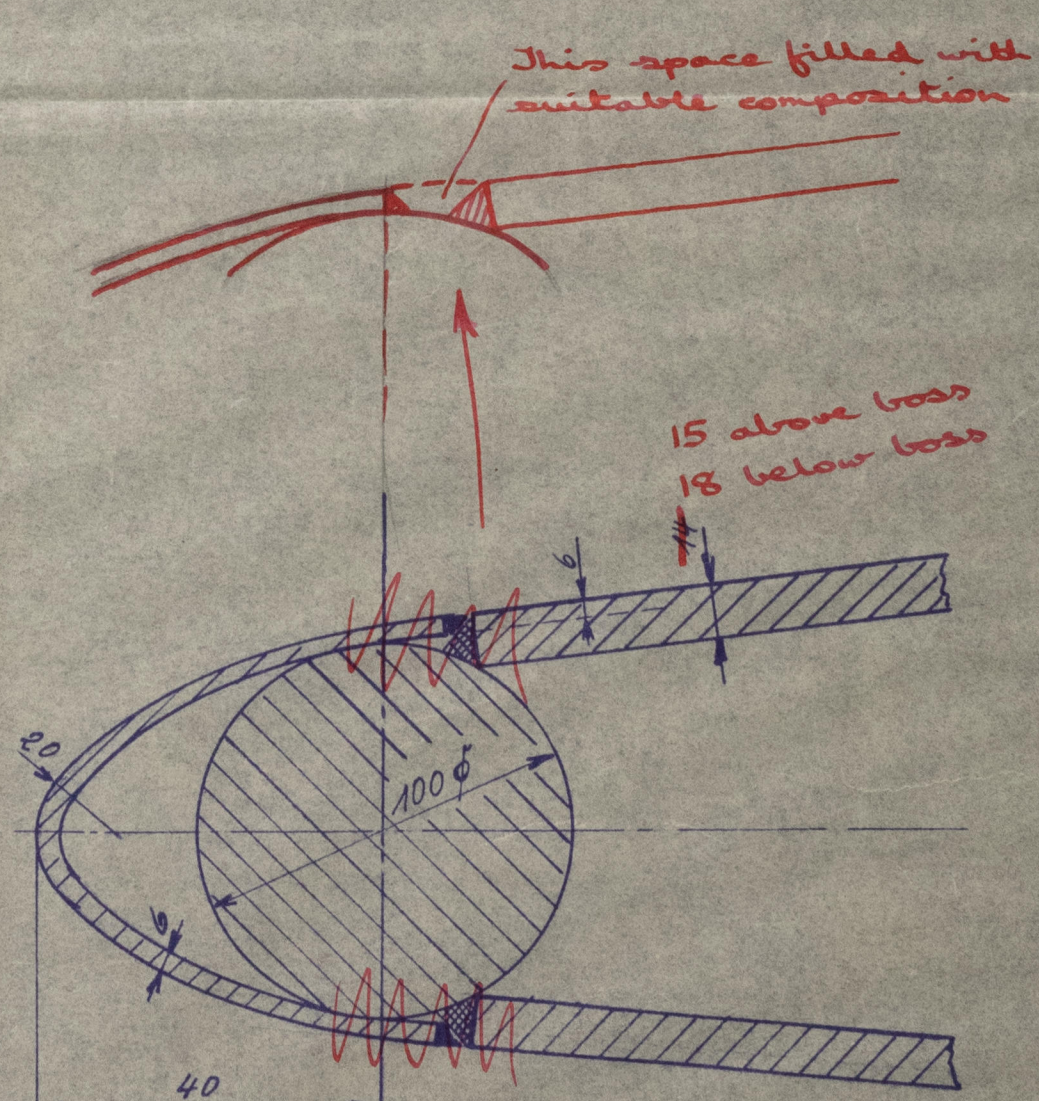
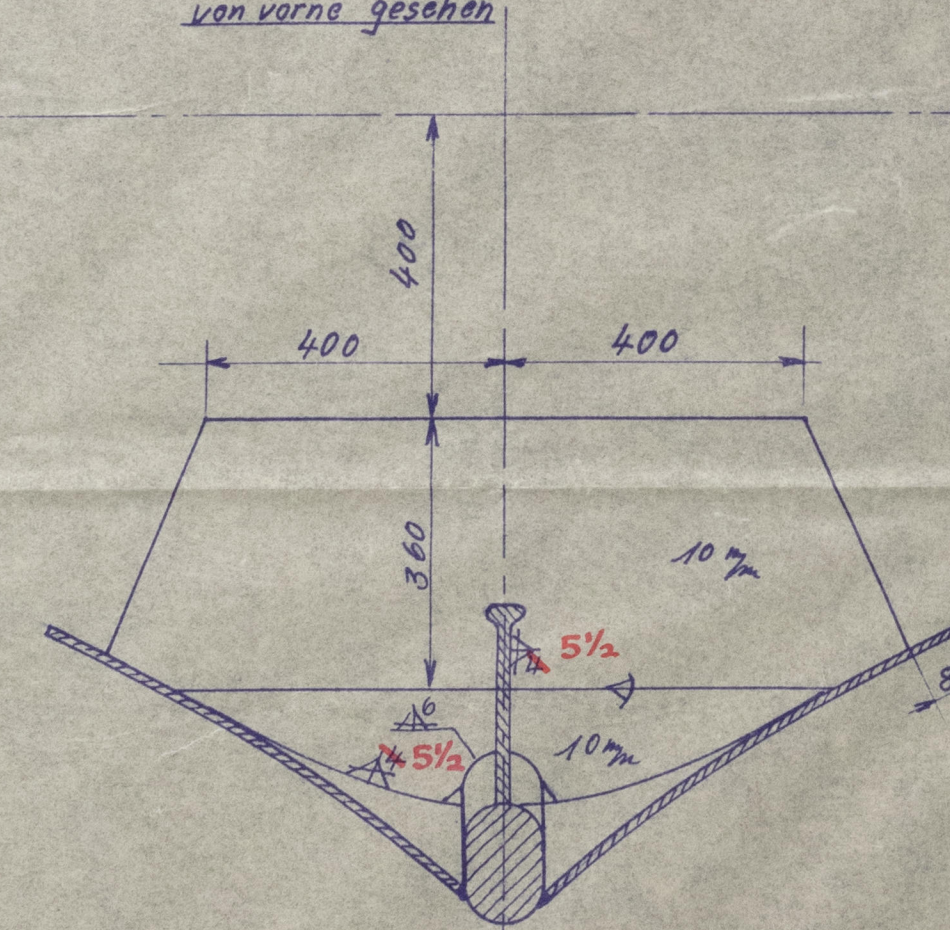
Spt. 0



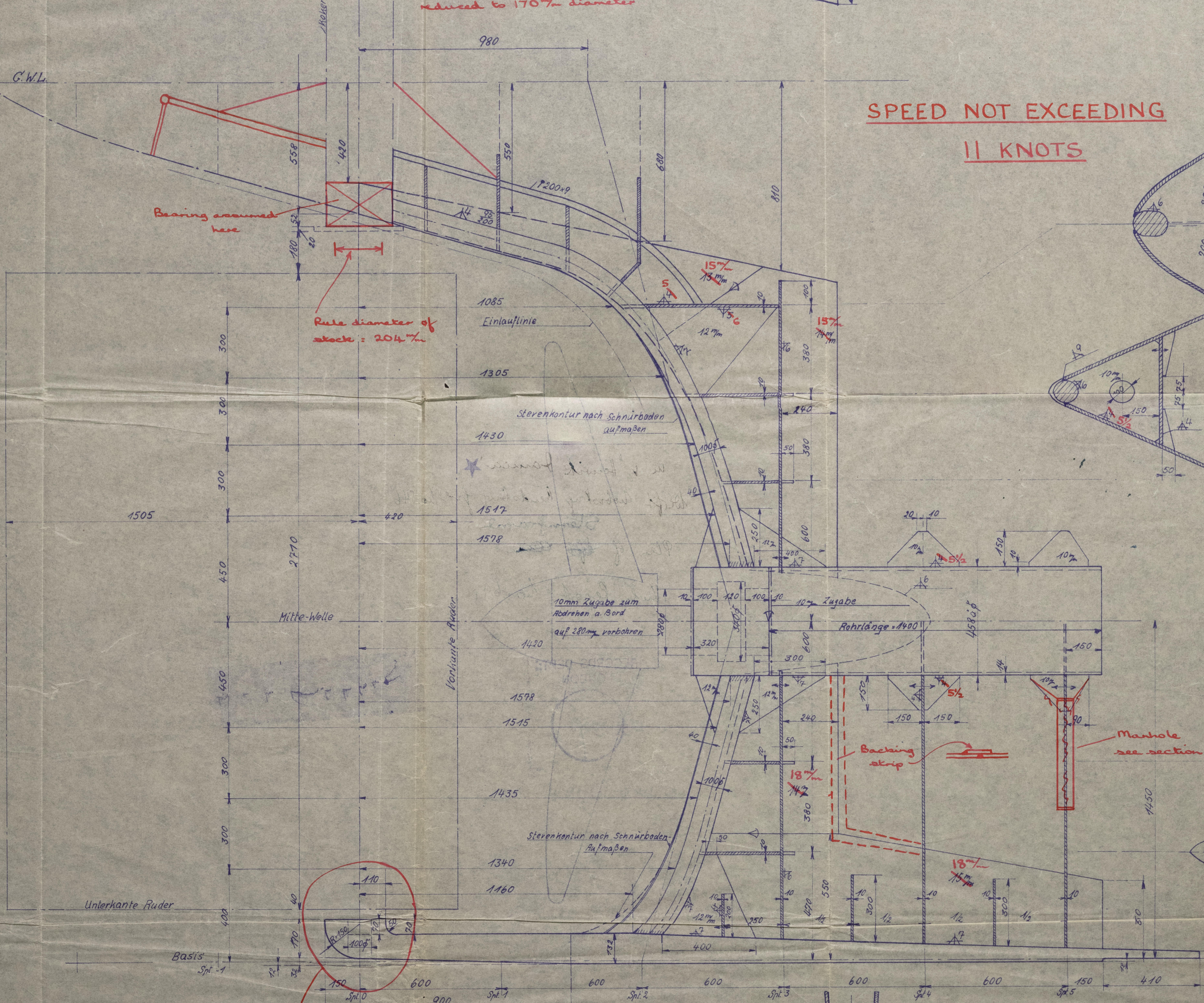
Spt. 1



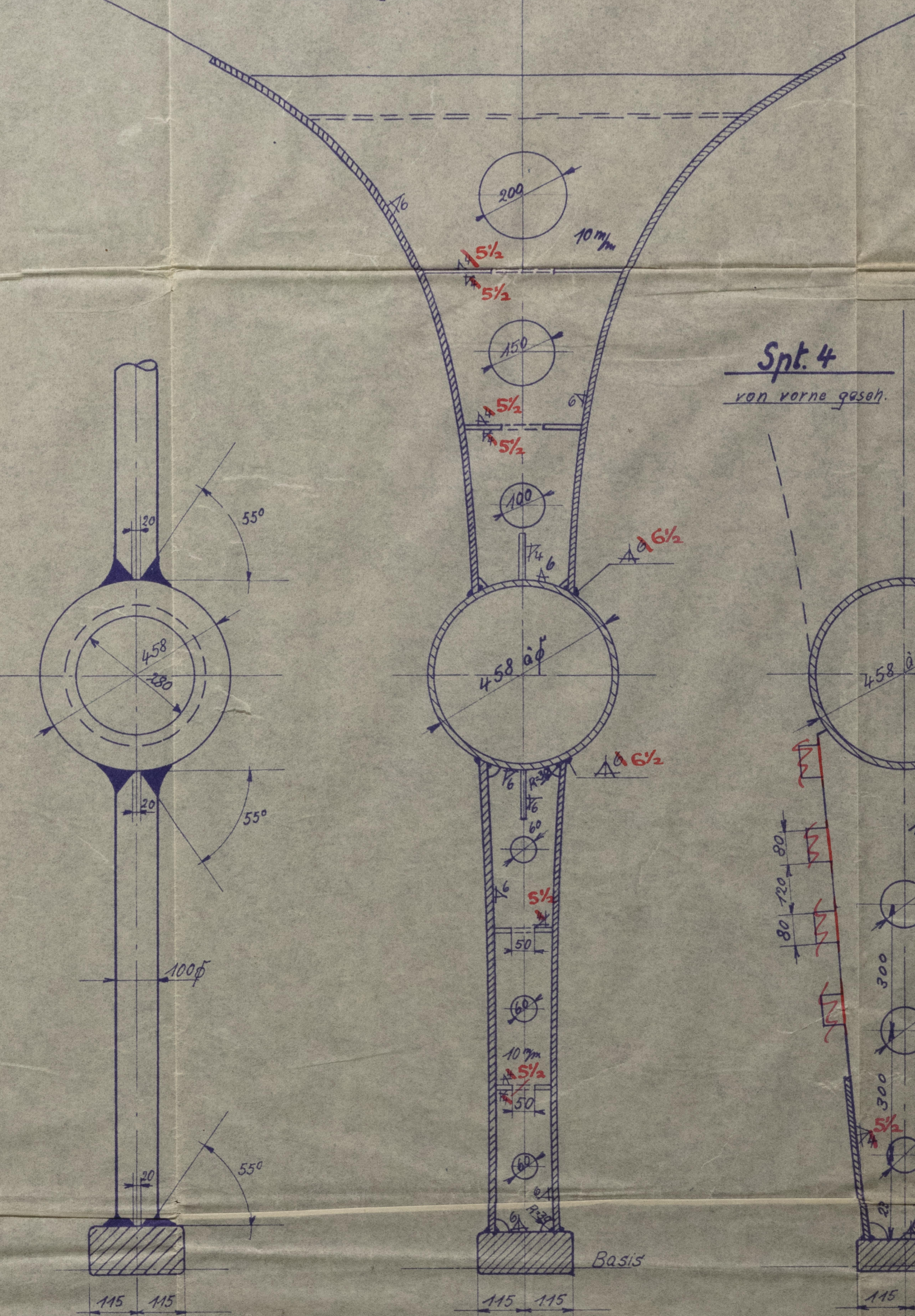
Spt. 2



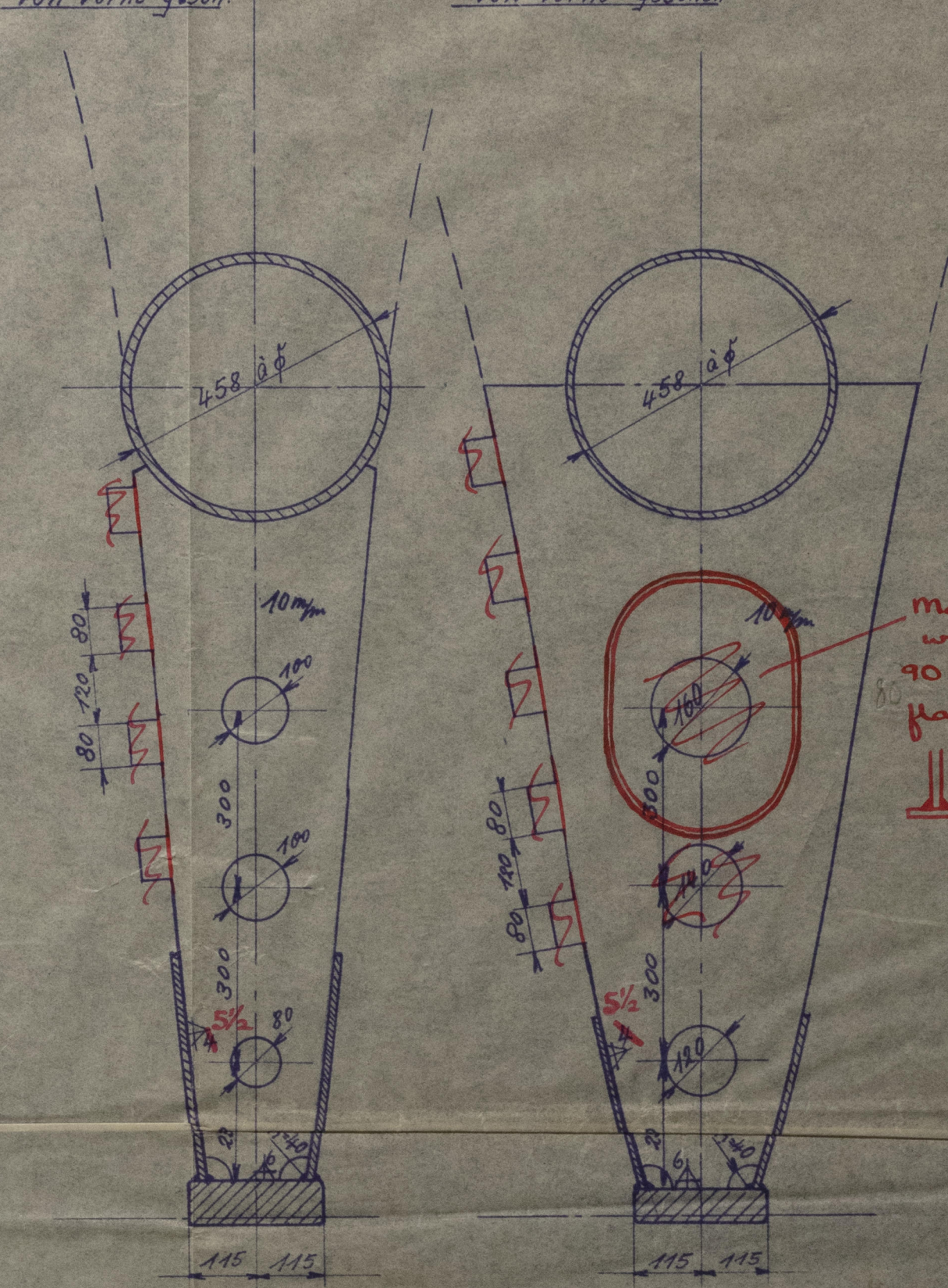
**SPEED NOT EXCEEDING
11 KNOTS**



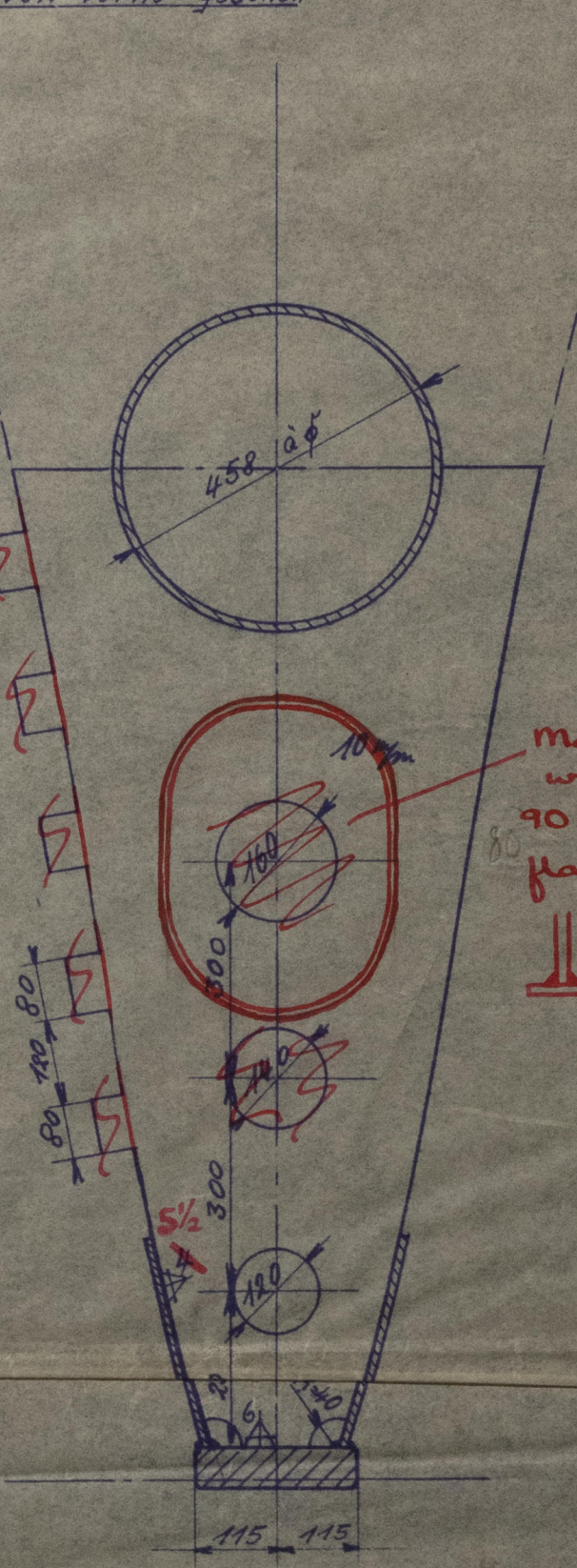
Spt. 3
von vorne gesehen



Spt. 4
von vorne gesehen



Spt. 5
von vorne gesehen



Rule diameter of
pinhole = 140%
outside liner
Bearing length
in gudgeon 140%

Breadth of solepiece
at this point not
less than 230%

genaueres Maß vom Schnittboden

Marke	Stück	Gegenstand	Bemerkung
St. 3	1	4000 x 240 x 330	Stevenssole
	1	1000 x 460 mm	Stevensmaß (Preis 650 mm) ausst. best.
	1	1440 x 200 x 8	
	2	2000 x 500 x 15	vom Lager
	2	650 x 750 x 14	
	2	1600 x 1300 x 14	
	2	2000 x 1000 x 13	
	1	4000 x 1200 x 10	
	1	1200 x 500 x 13	

Baugruppen Nr. 103

22.51 Risch
Werft Nobelskrug G.m.b.H., Rendsburg

1:10
1:3 Hintersteren 546
20401

003481-003494-0224

m. v. "Hewik Janica" ★

Werft Hobisking Rendsburg fad ho

Stemframe

Plan of ~~the~~ ~~stem~~

Kiel Report no. 691

RECORDS DEPT:
LONDON

7

003487-003494-0224



© 2020

Lloyd's Register
Foundation