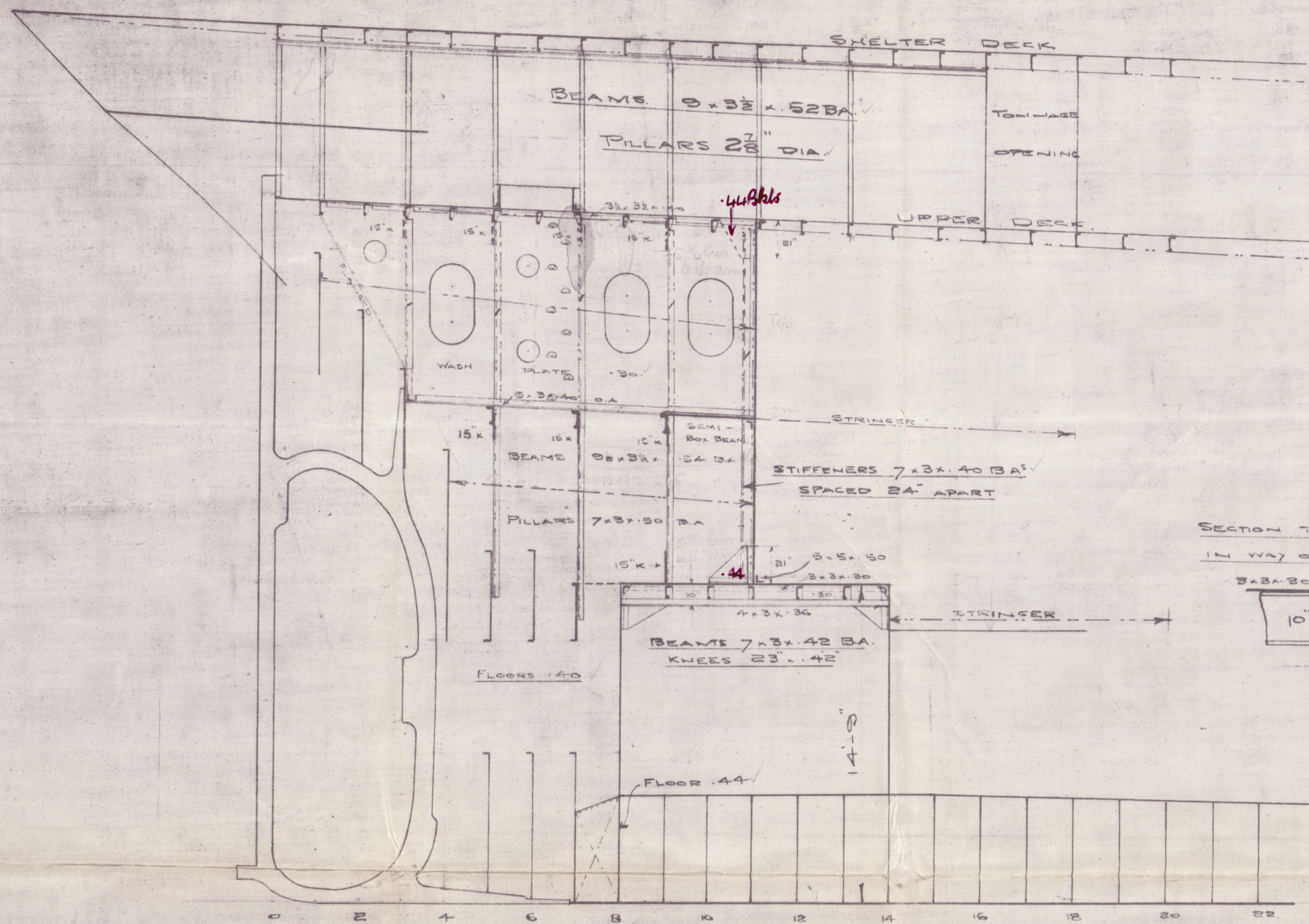
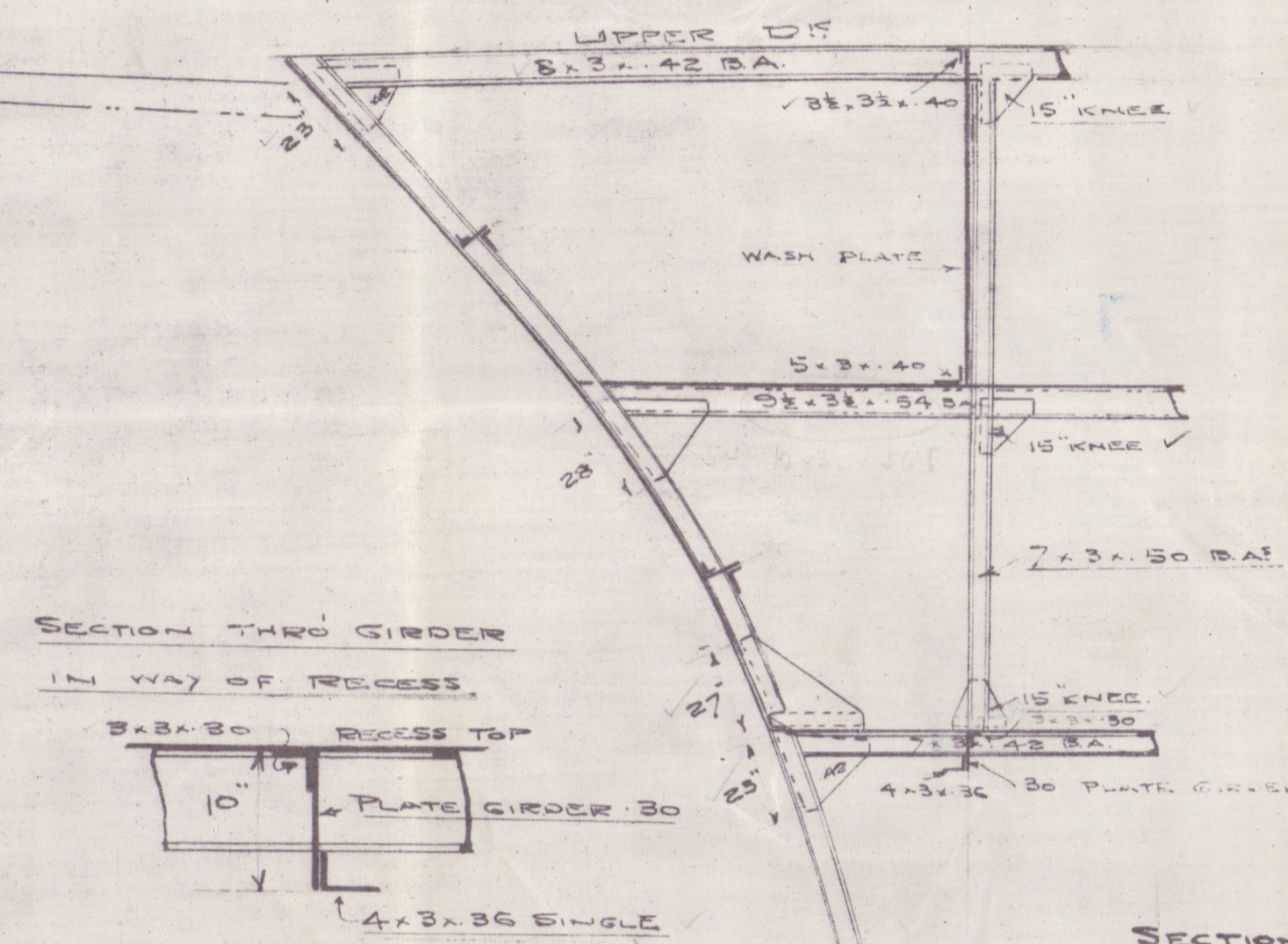


30.819 ELEVATION.

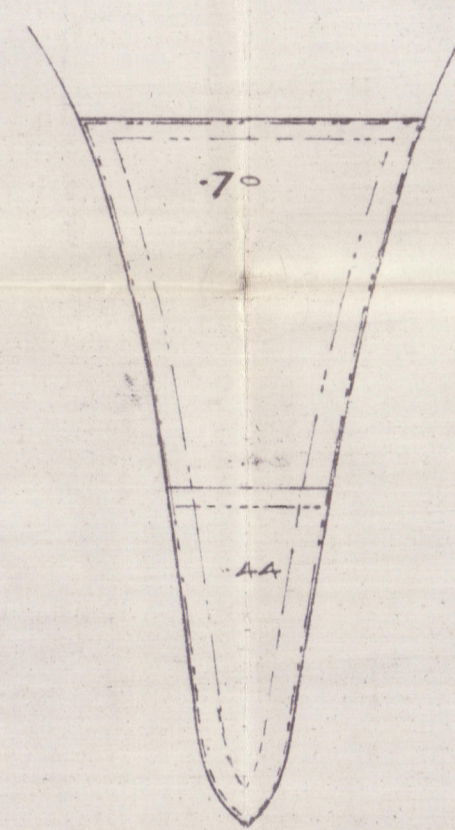
ARRANGEMENT OF AFTER-END STRINGERS, ETC. No 317 5/5



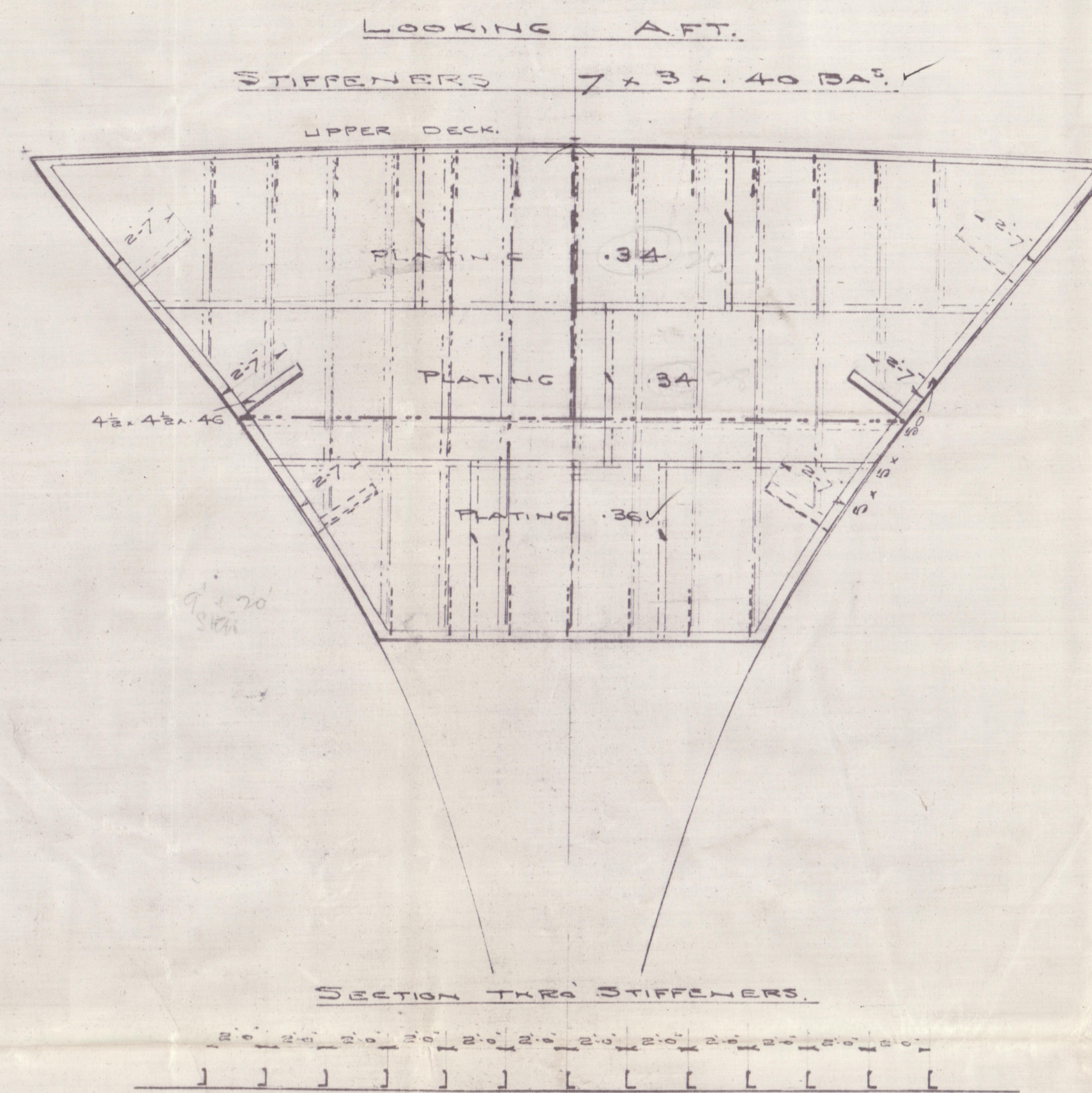
SECTION AT 3 FRAME
LOOKING AFT.



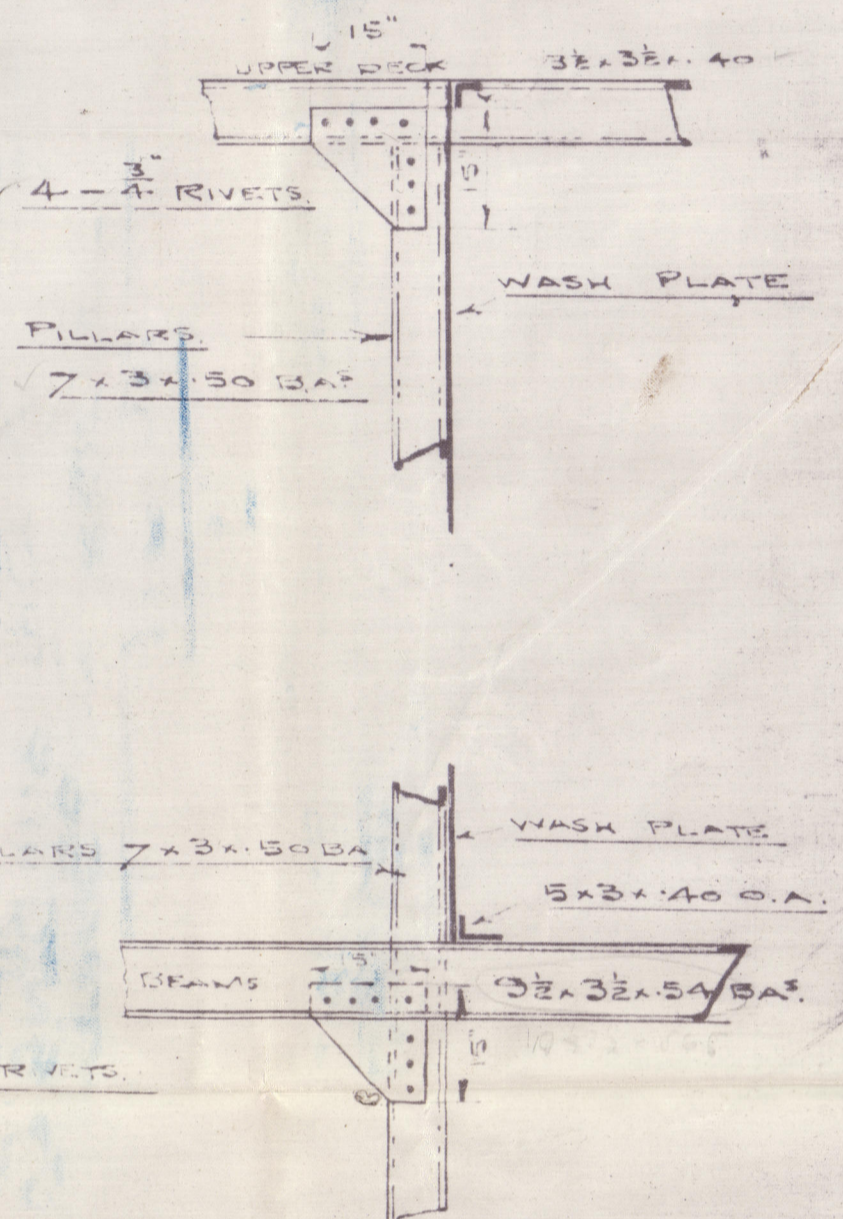
SECTION AT 8 FRAME
LOOKING FOR.



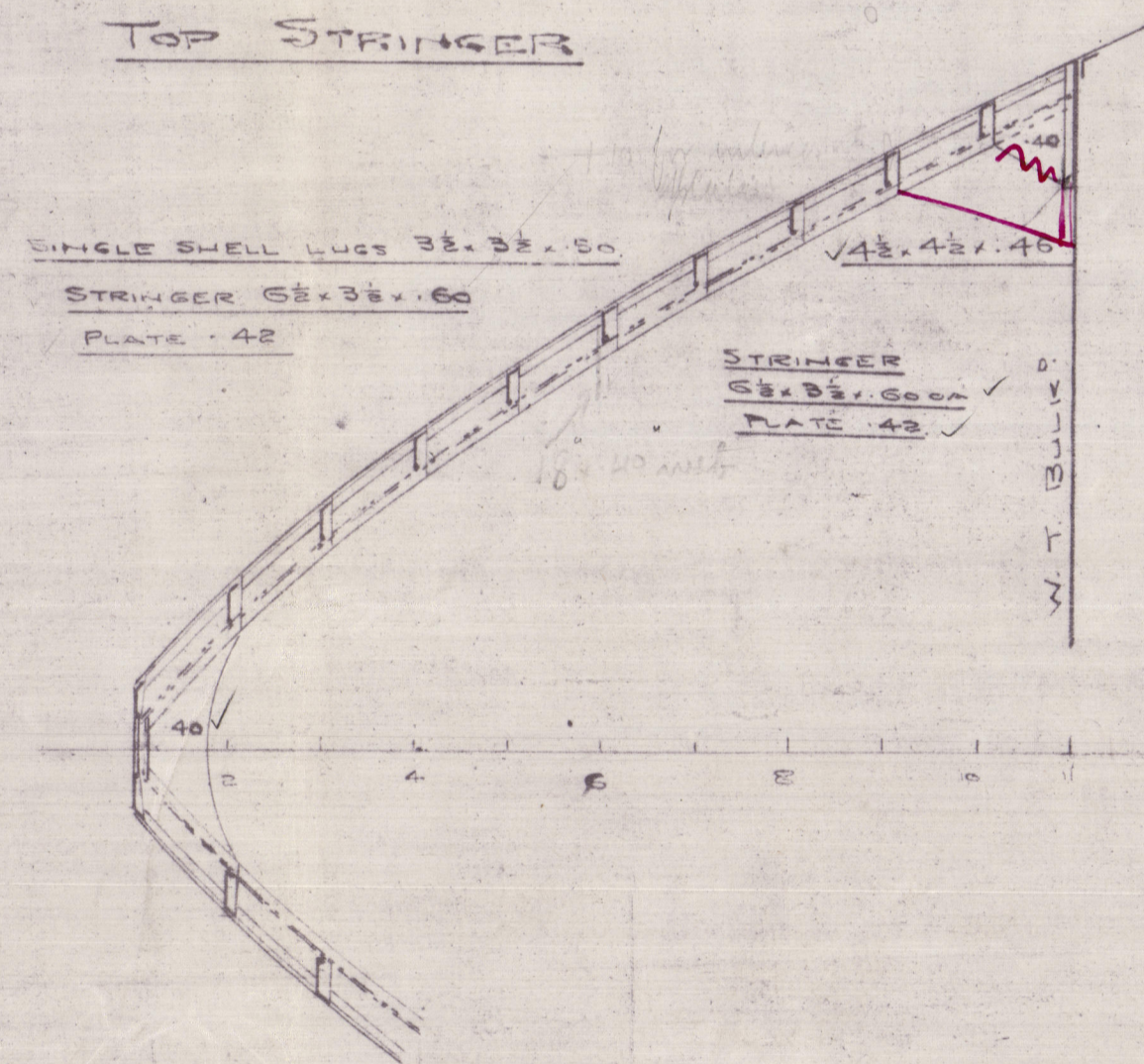
W.T. BULKHEAD ON 11 FRAME



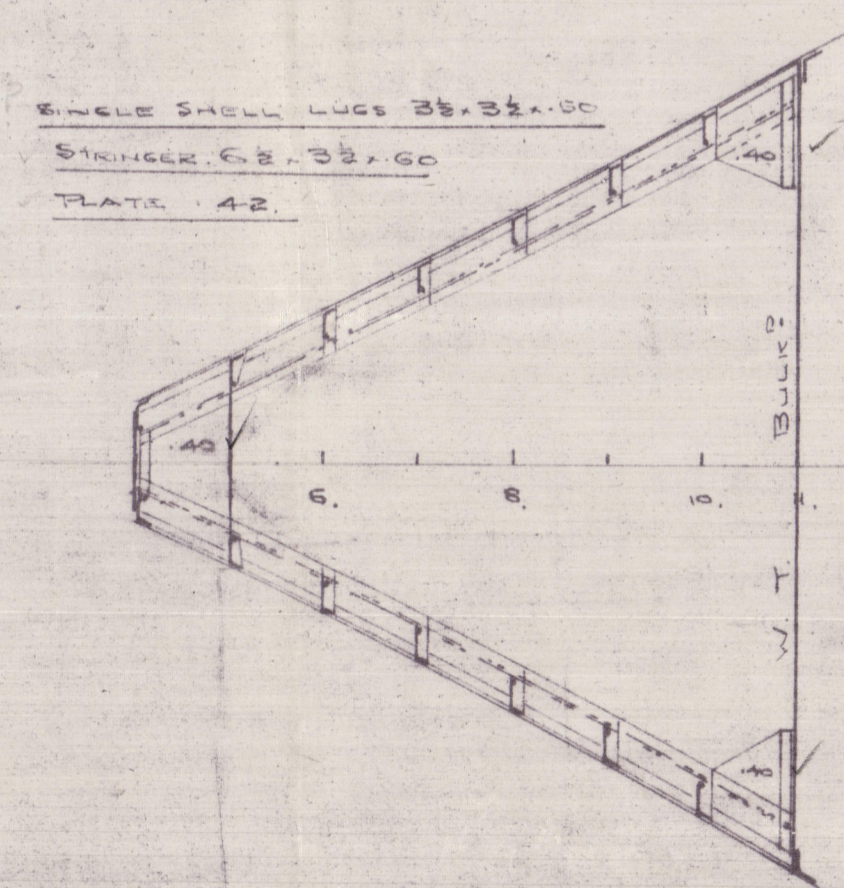
SKETCH SHOWING CONNECTION
OF 15 KNEES TO PILLARS ETC.



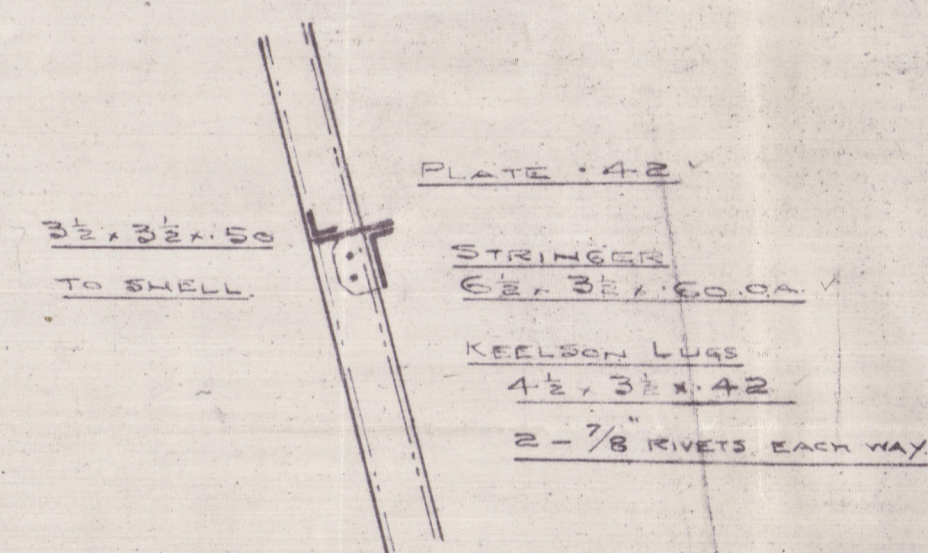
TOP STRINGER



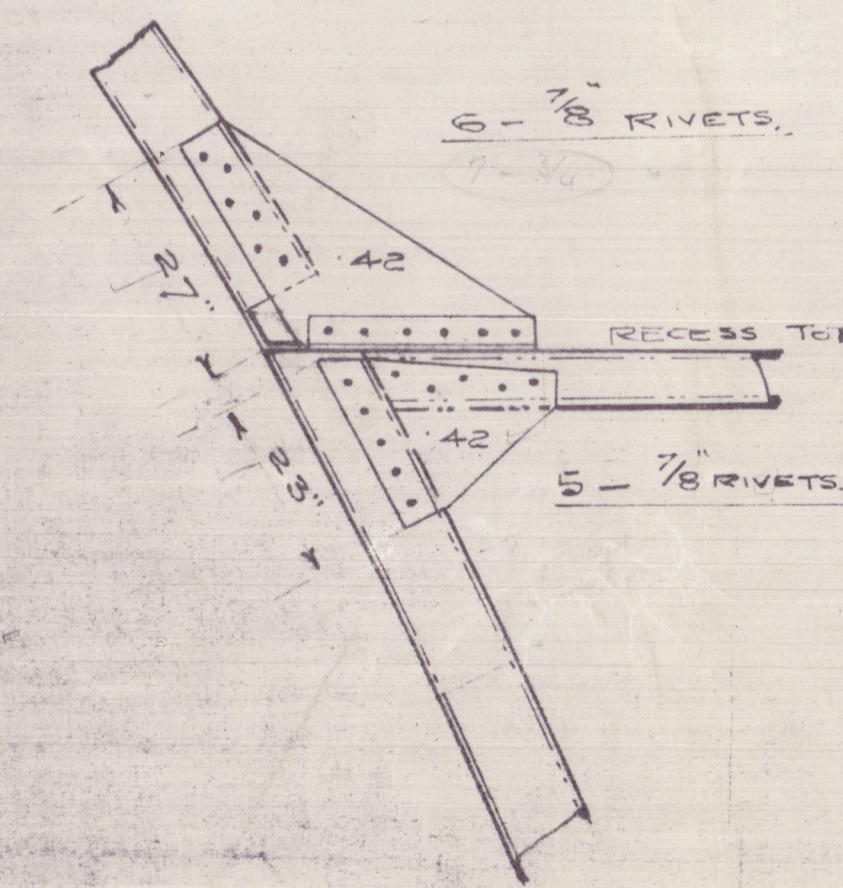
3RD STRINGER



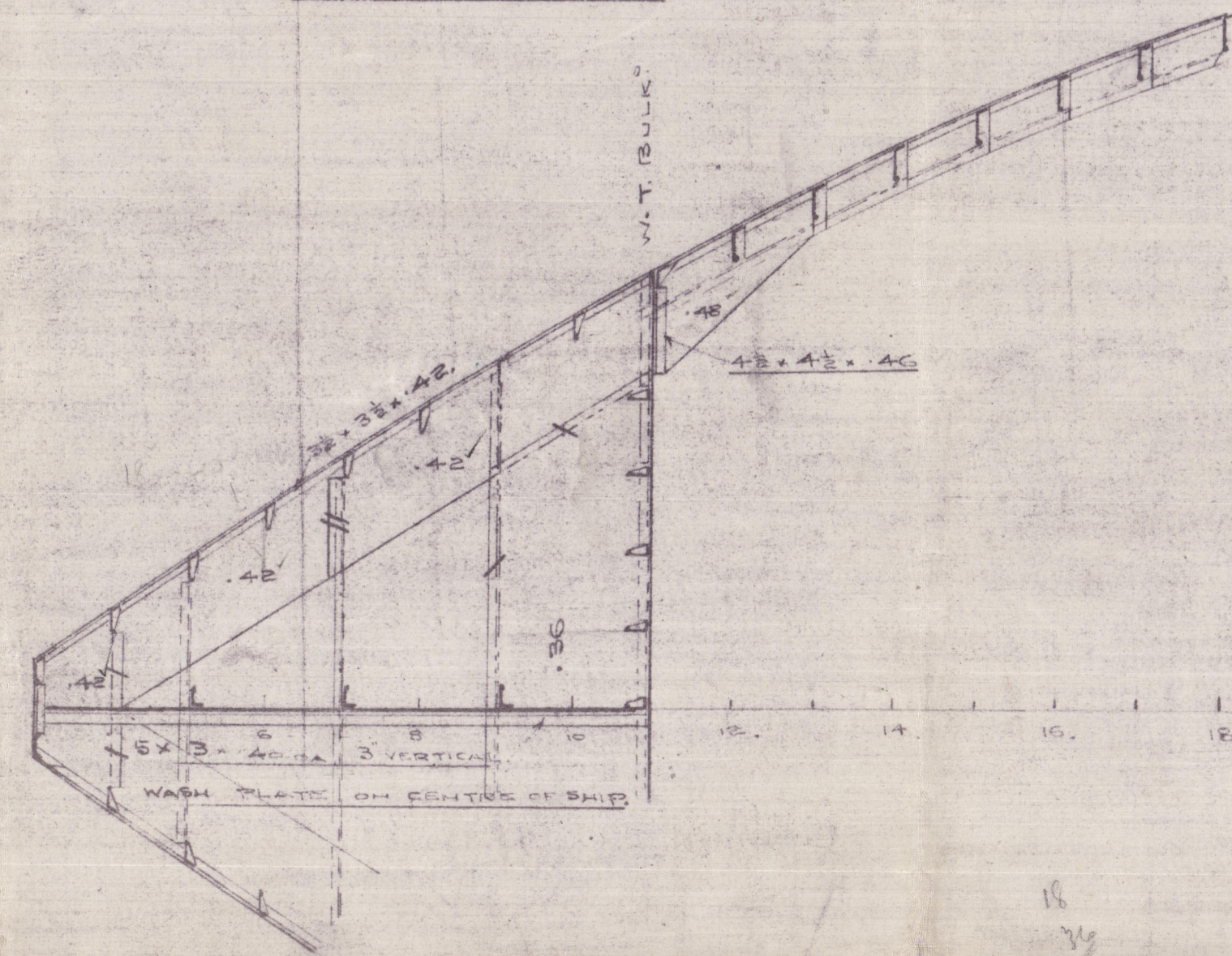
SECTION THRU STRINGERS



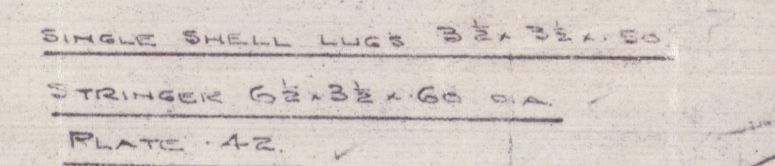
SKETCH OF RECESS TOP KNEES.



2ND STRINGER

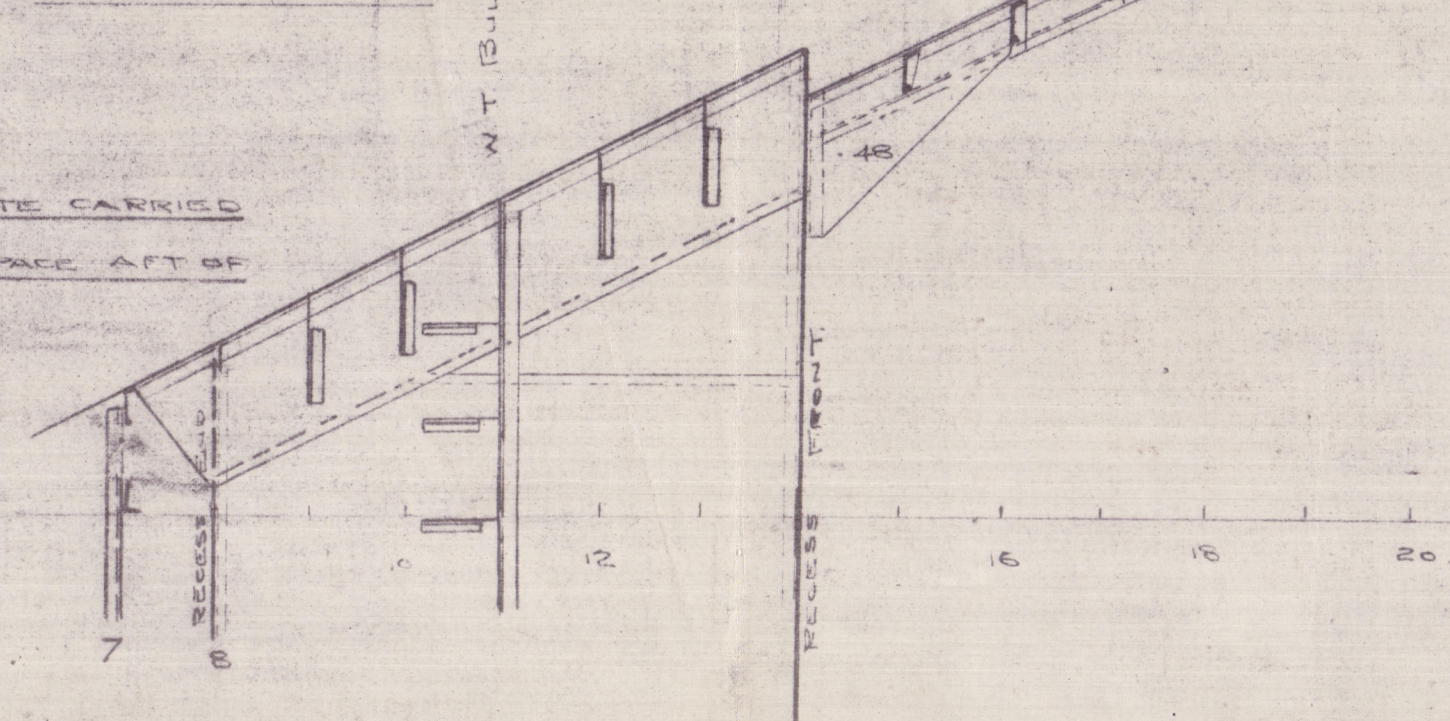


LOWER STRINGER



RECESS TOP

STRINGER PLATE CARRIED
ONE FRAME SPACE AFT OF
RECESS END



RMM
29.8.19.

SUNDERLAND SHIPBUILDING
Co

No 317

ARRANGEMENT OF AFTER
END STRINGERS ETC

Sea. Office Copy

S/S DIADEM

SUNDERLAND RPT. NO. 27940



© 2020

Lloyd's Register
Foundation

003487-003494-0129