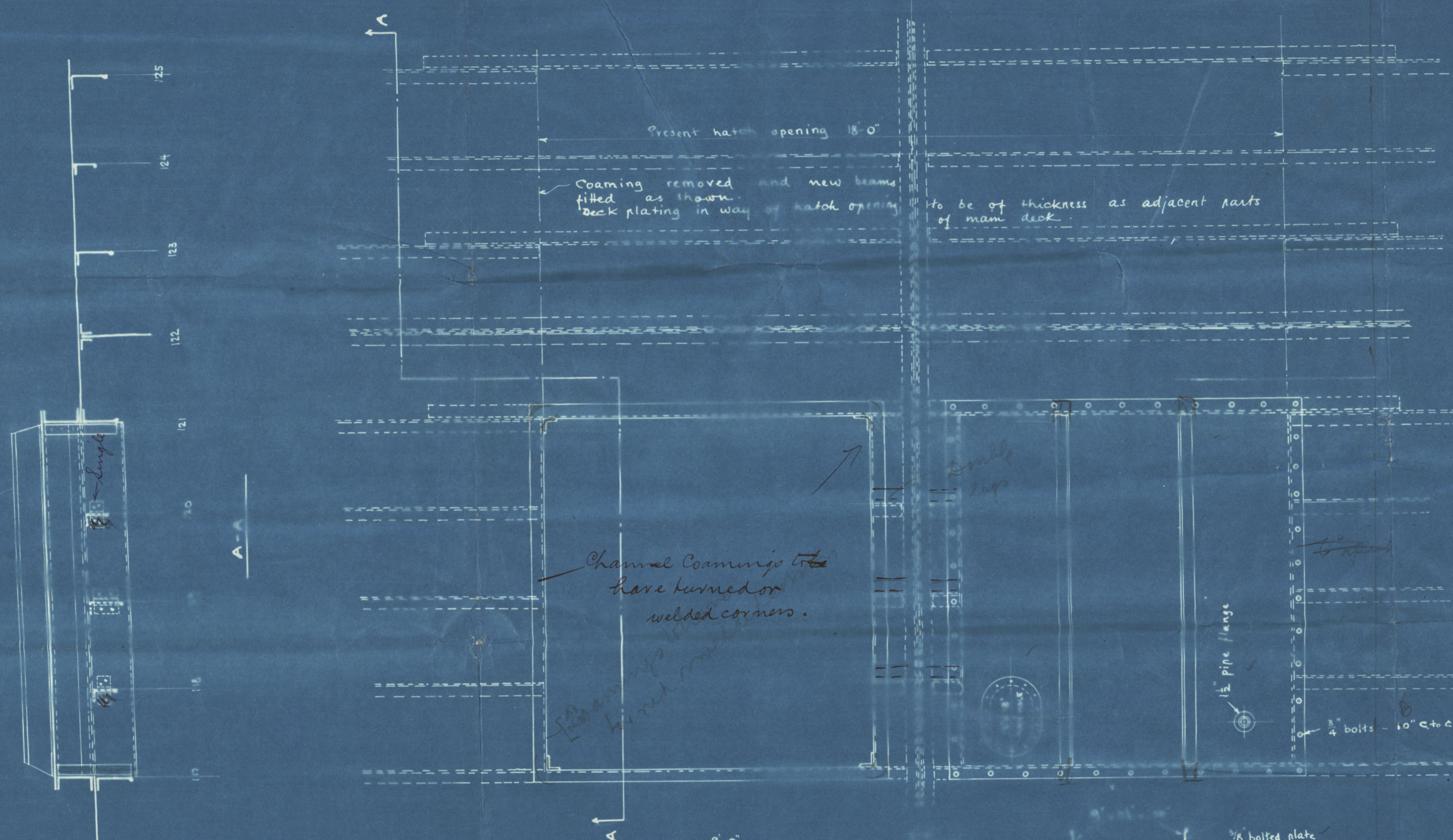
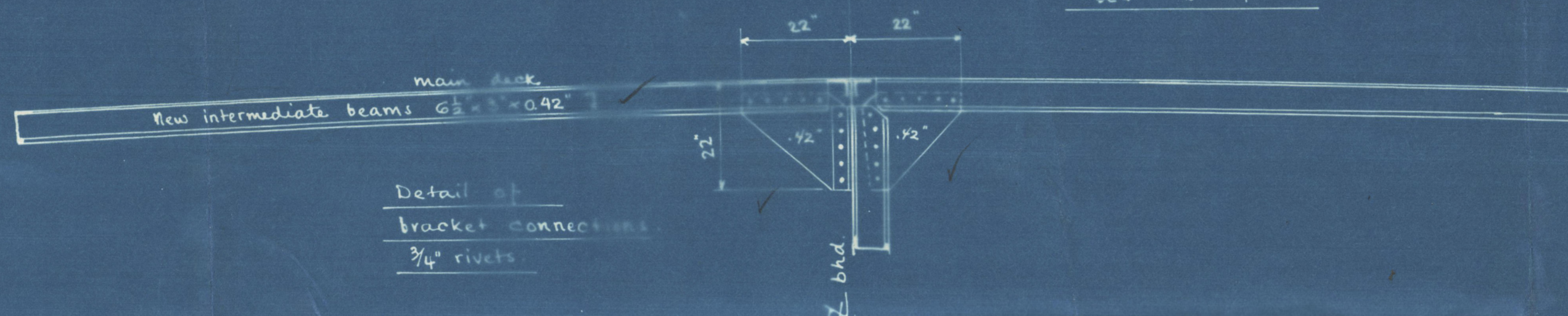
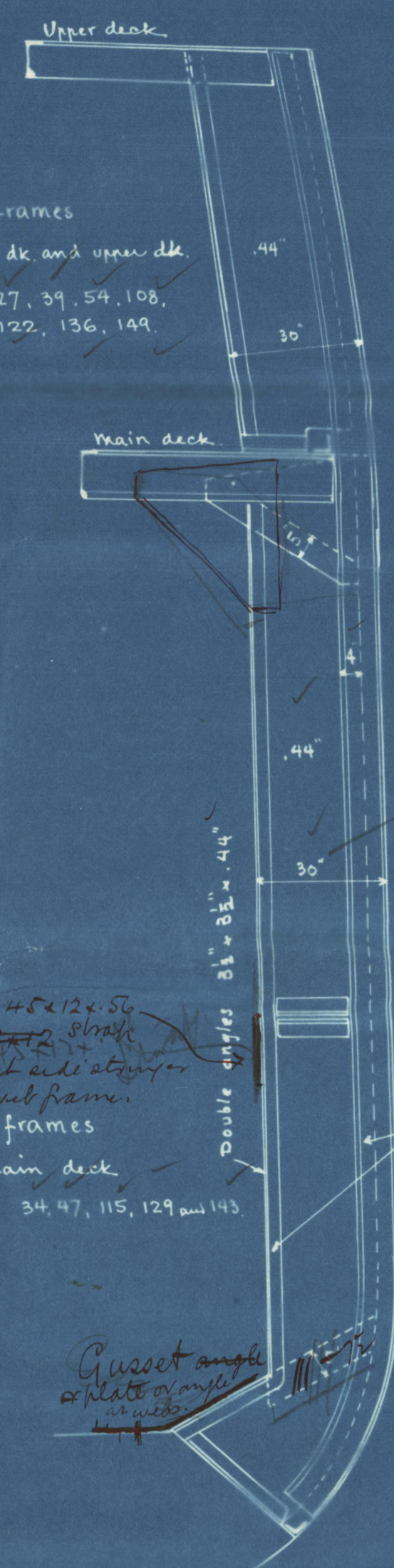


Scale:  $\frac{1}{2}$ " = 1 foot.



Scale:  $\frac{1}{2}$ " = 1 foot.



Web frames

Scale  $\frac{3}{8}$ " = 1 foot.

Web frames between main dk and upper dk. at frames 27, 39, 54, 108, 122, 136, 149.

Double lugs 2 1/2" x 3 1/2" x 4 1/2"  
Web frames below main deck at frames 34, 47, 115, 129 and 143.

Gusset angle plates on web frames

Schaeffer  
O'Neil

S/S MAUDIE

- 8' x 8' W.T. BOLTED HATCHES FOR WHALE OIL TANKS.
- NEW BEAMS IN WAY OF PRESENT HATCH OPENINGS.
- MAIN DECK BEAM CONNECTIONS.
- WEB FRAMES.

Jarvis Verft 16/5-22.



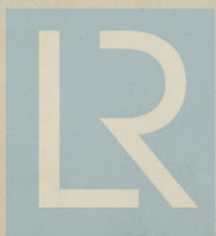
2020 Lloyd's Register

003474-003478-0120 undation

Maudie

Web frames

+ deep tank  
oil covers



© 2020

Lloyd's Register  
Foundation

003474-003478-0120