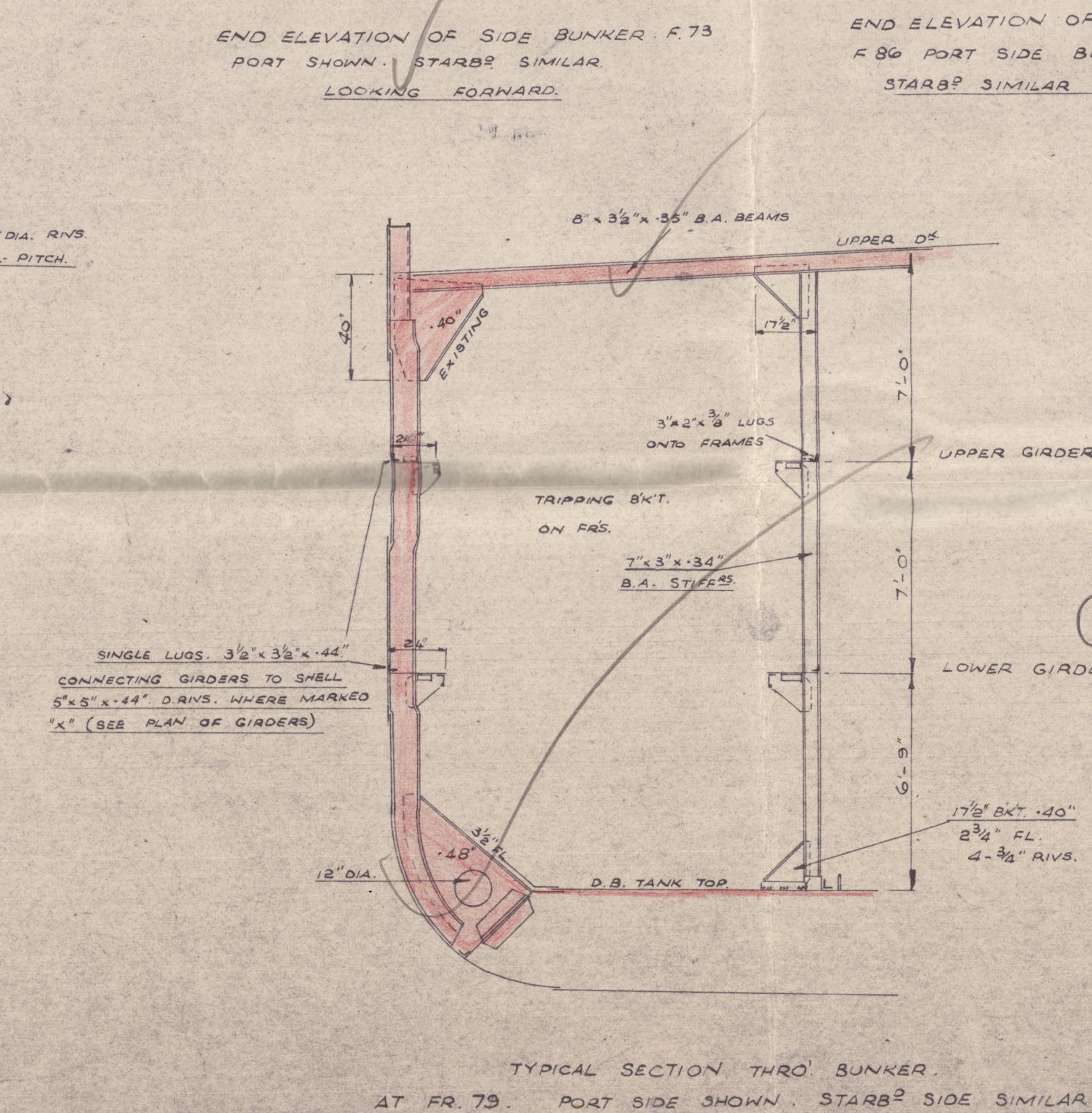
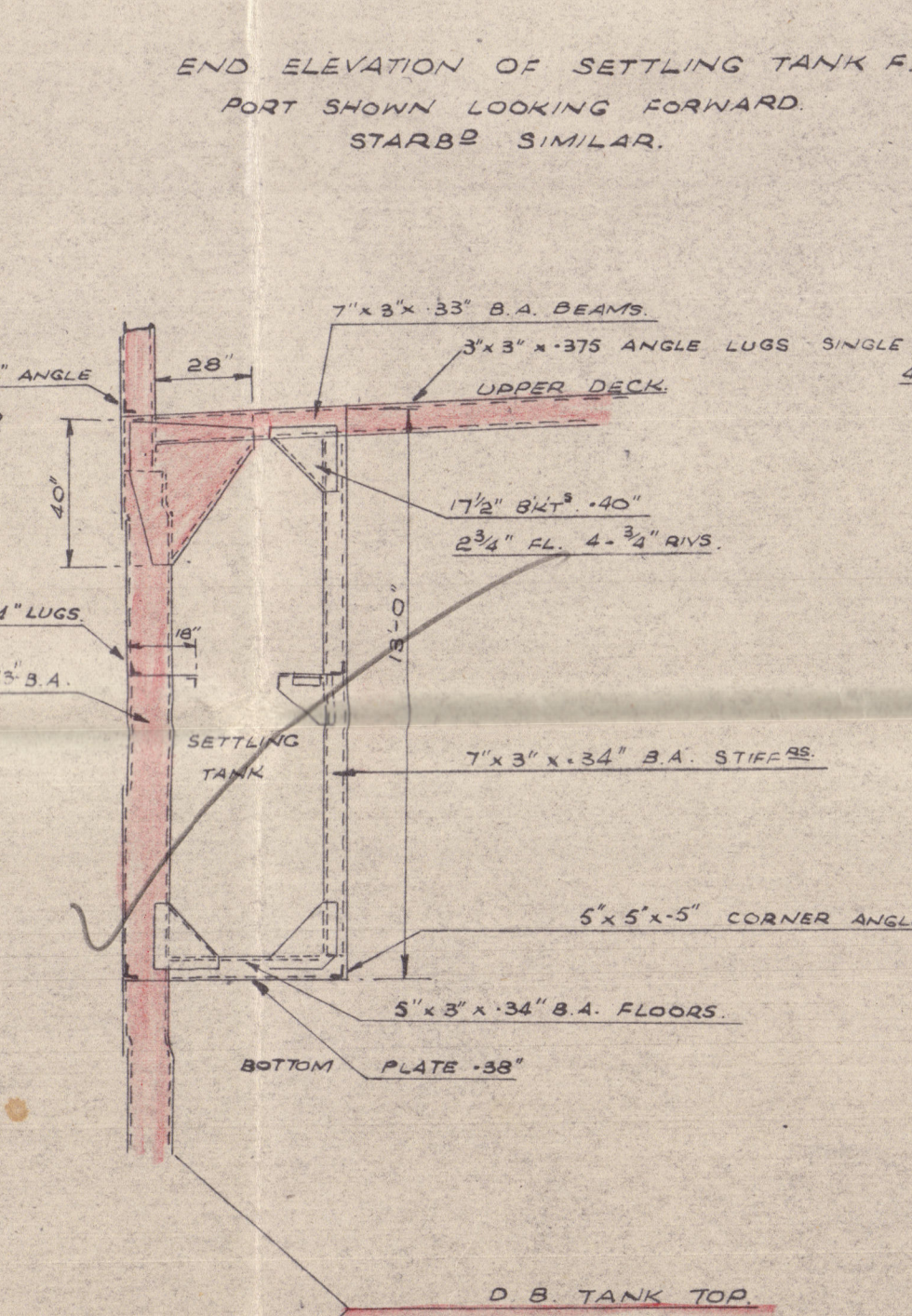
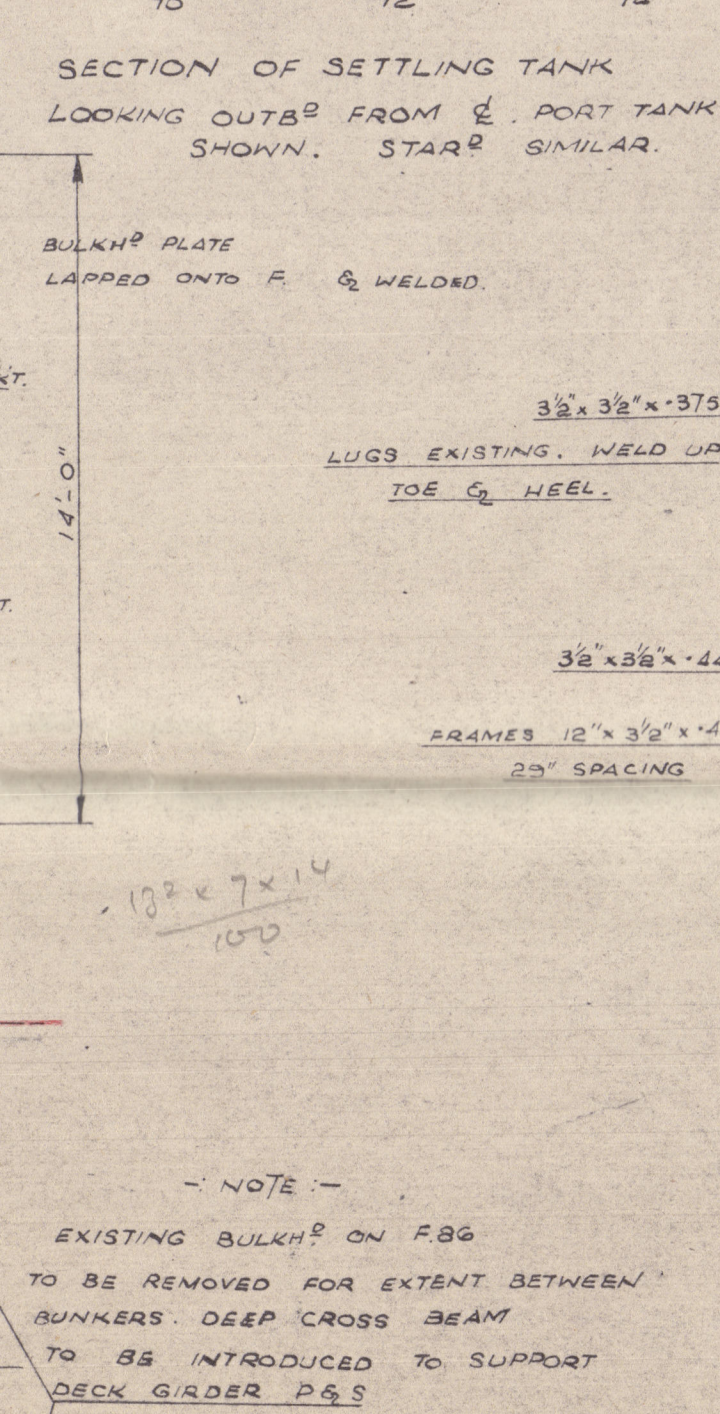
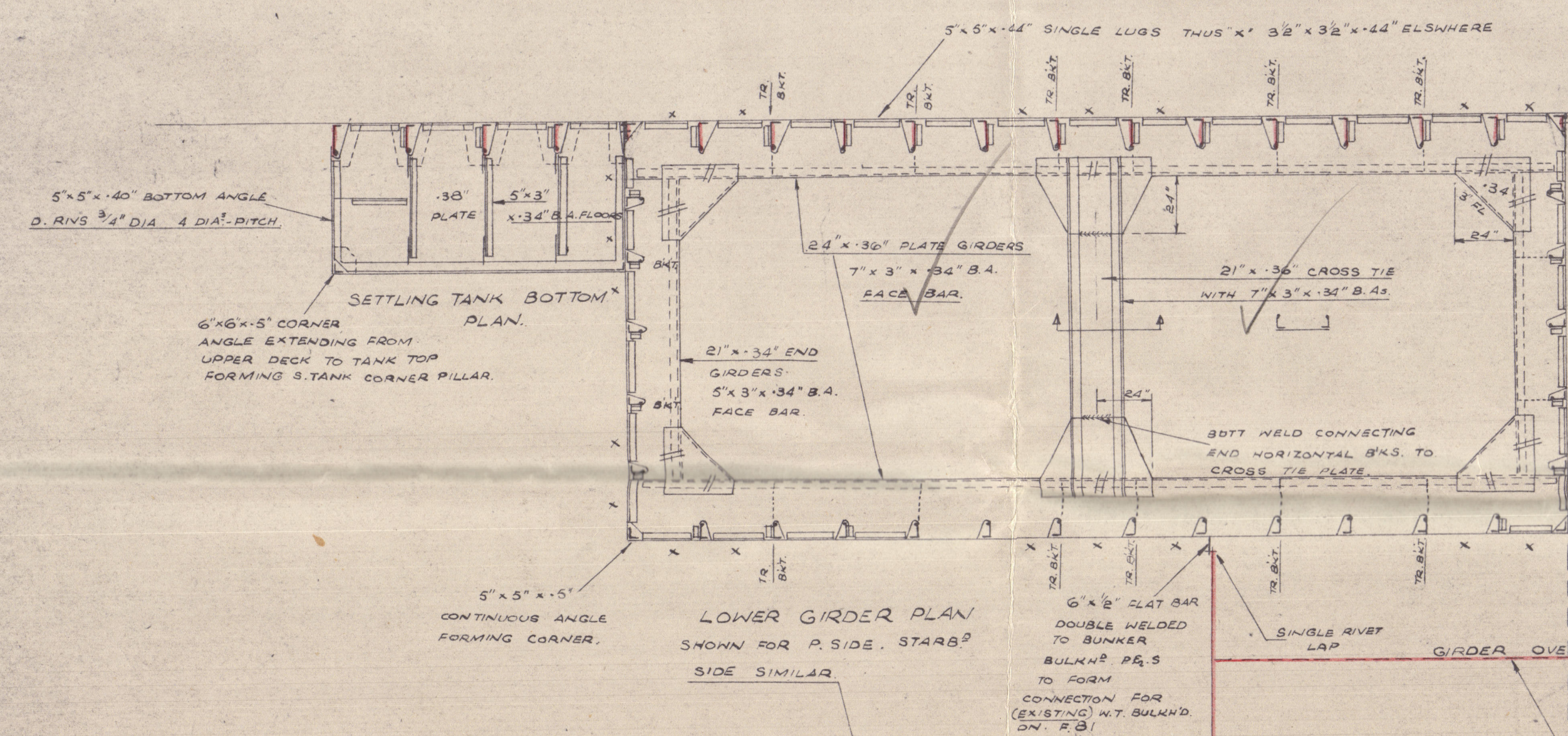
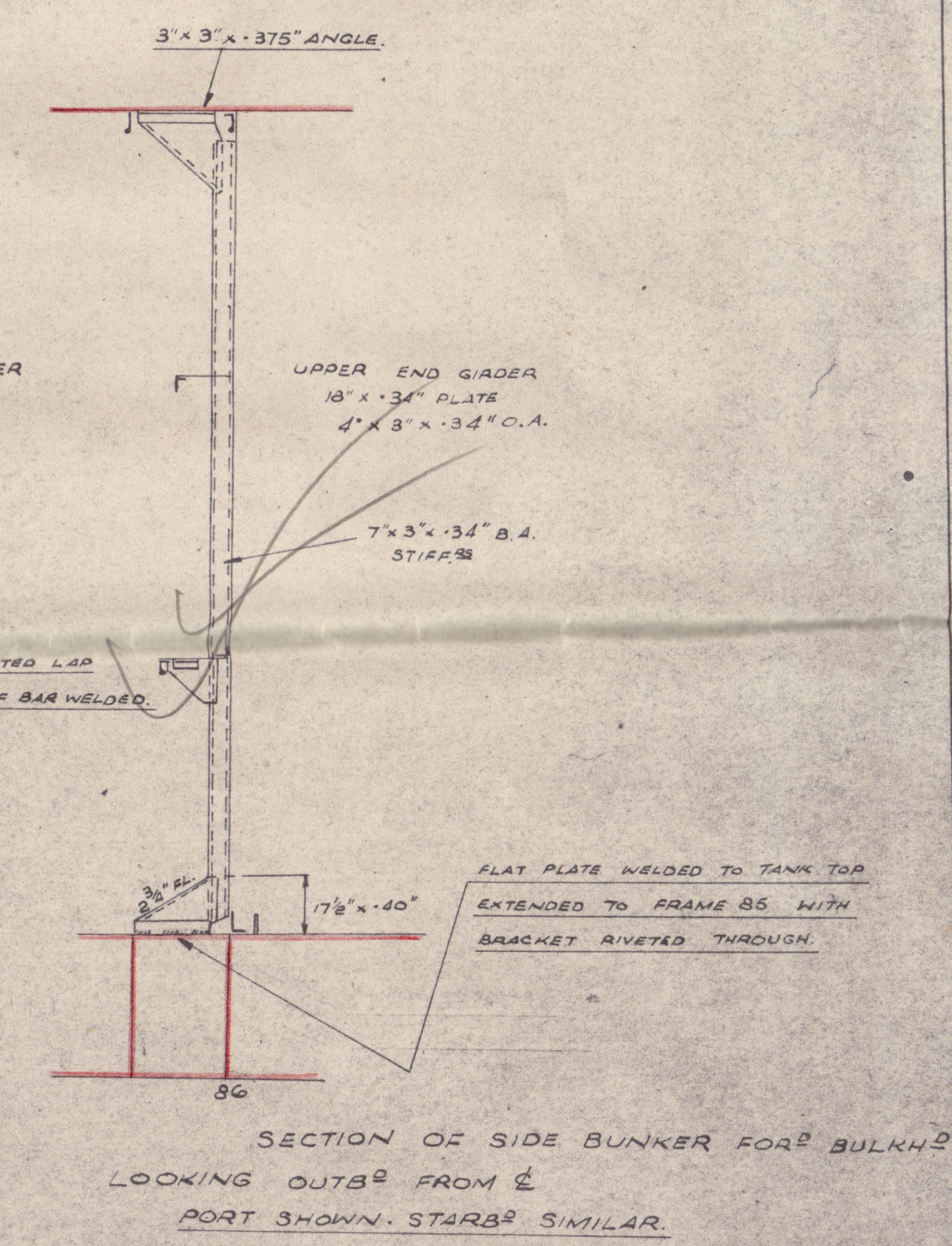
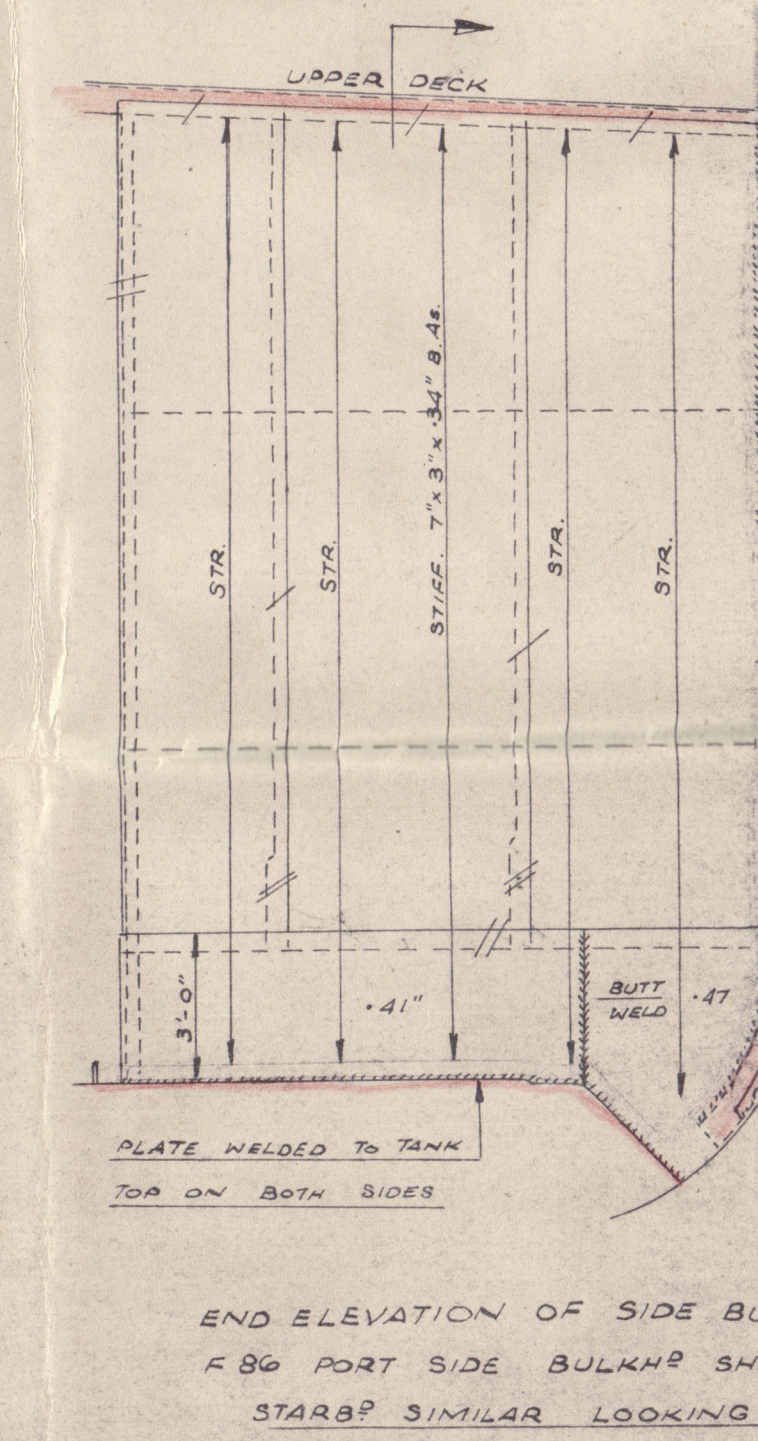
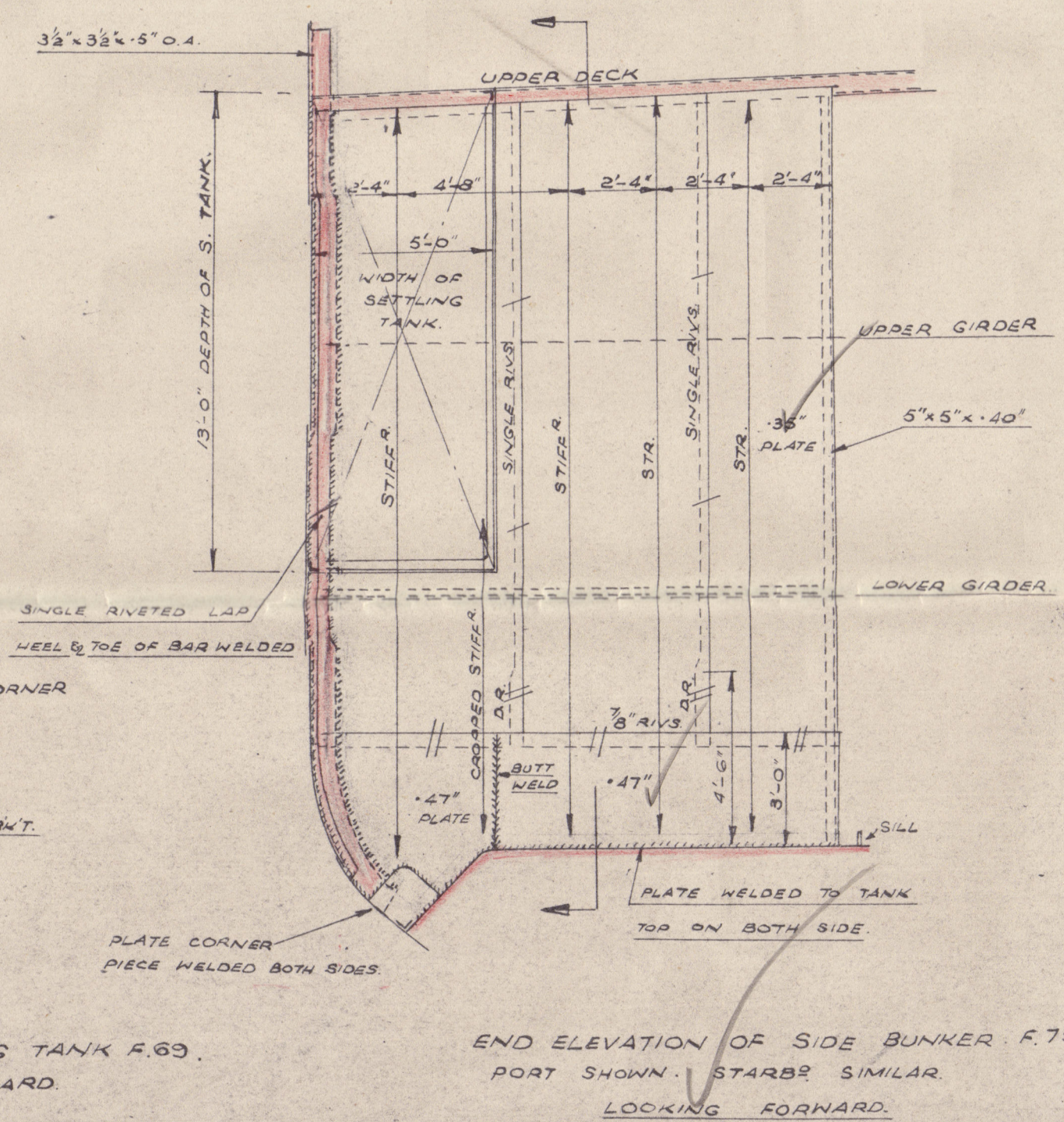
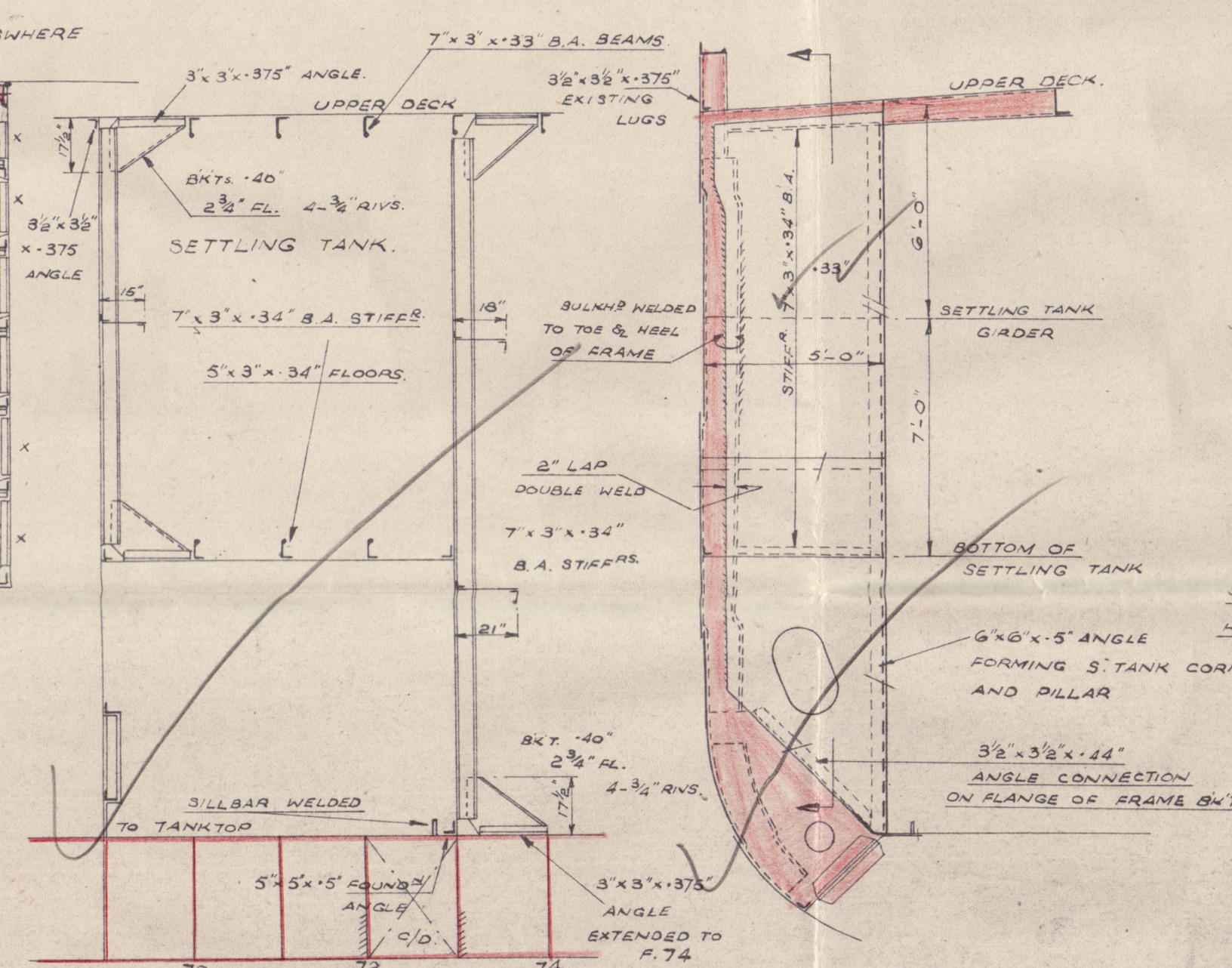
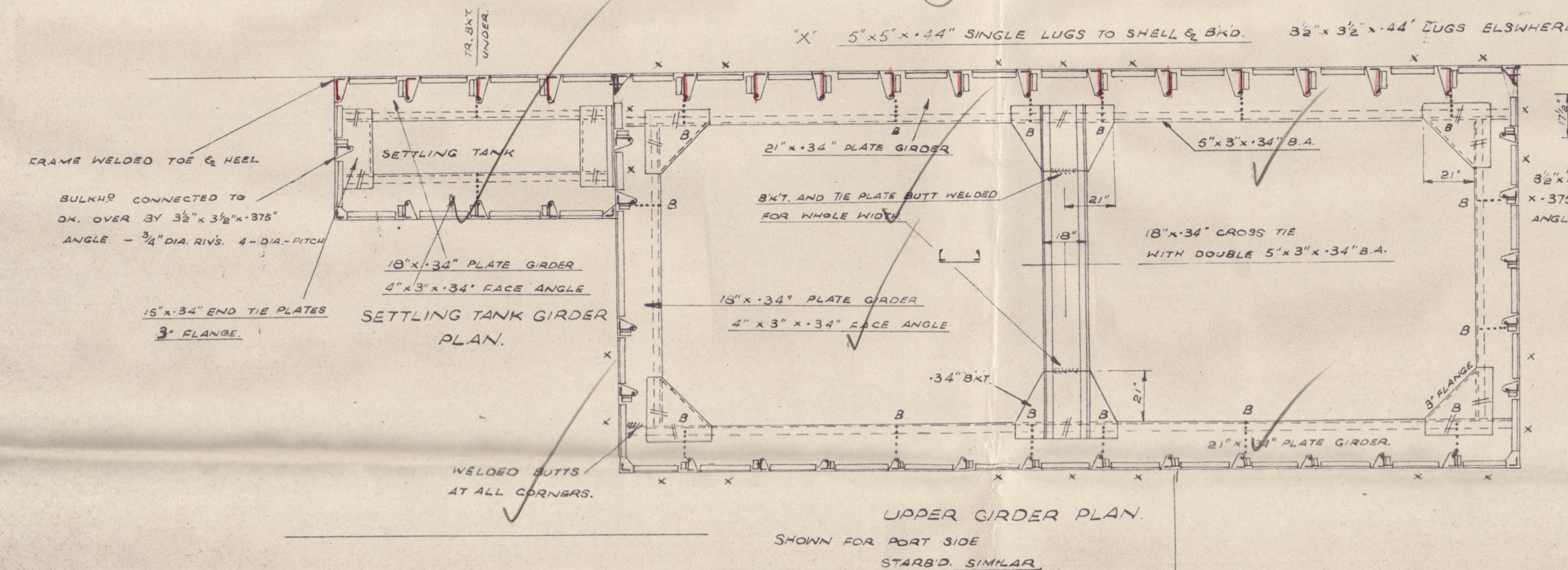
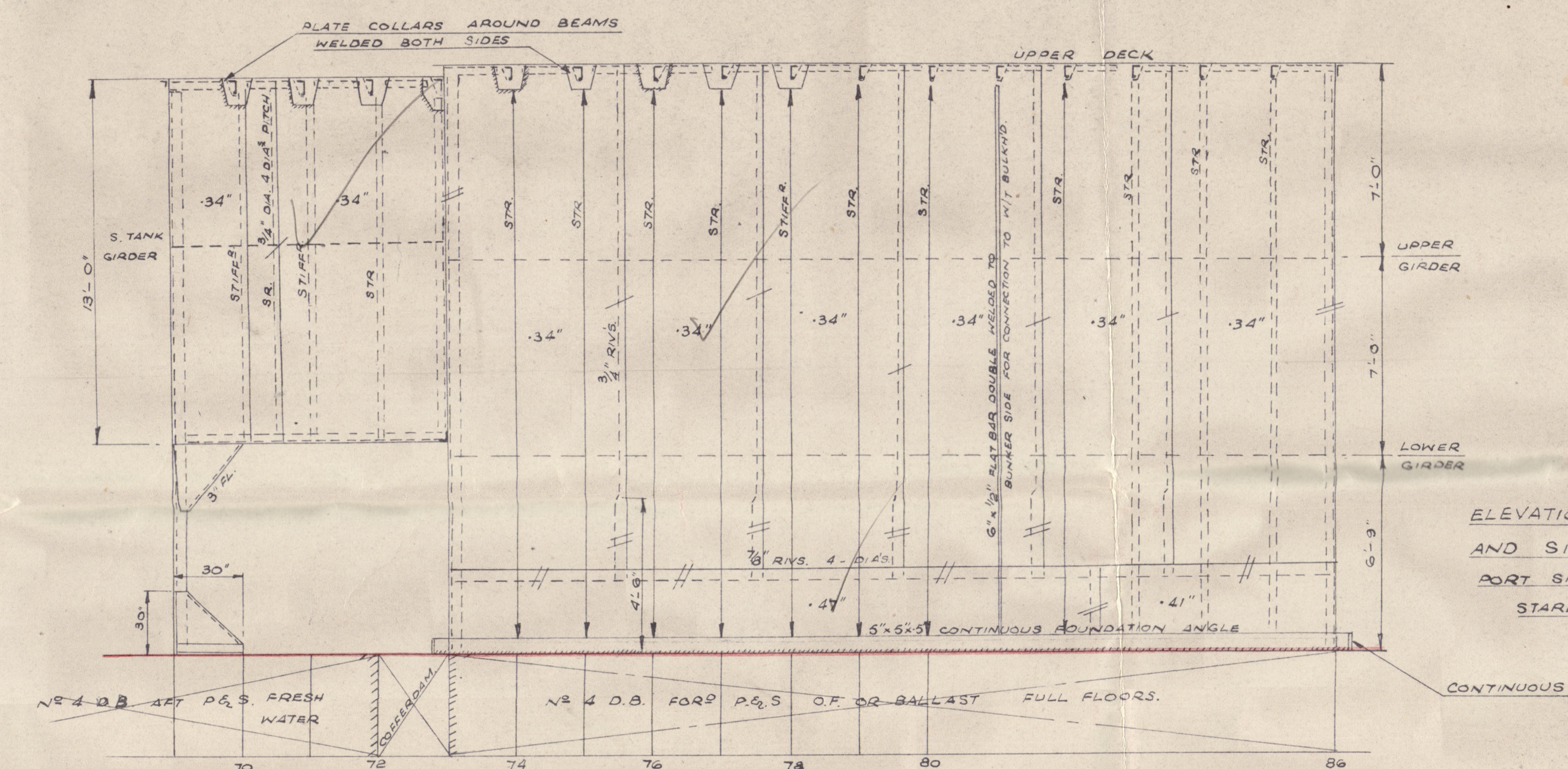
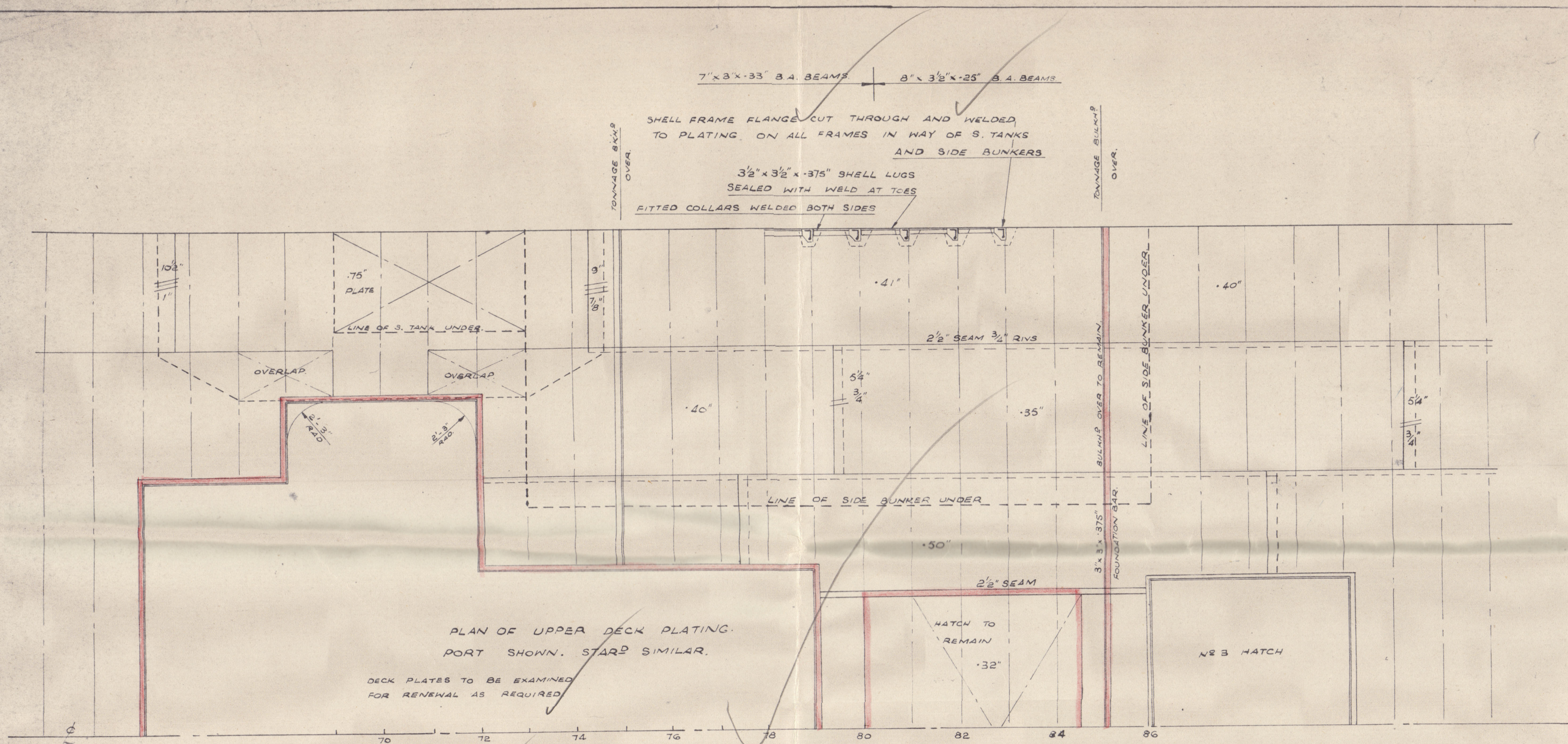


S.S. "CORINTHIAN."

STRUCTURAL DETAILS OF OIL
FUEL BUNKERS AND SETTLING
TANKS.

SCA/E:- $\frac{1}{4}'' = 1 \text{ FOOT}$

NOTE - EXISTING STEELWORK SHOWN IN RED



S.S. "CORINTHIAN."

STRUCTURAL DETAILS OF OIL
FUEL BUNKERS AND SETTLING
TANKS.

SCA/E :- $\frac{1}{4}'' = 1 \text{ FOOT}$

NOTE - EXISTING STEELWORK SHOWN IN RED

This plan has been compared with
a similar plan prepared for a sister
ship the Pandemon. The plan for the latter
ship was approved in Liverpool.

OFFICE



© 2020

Lloyd's Register
Foundation

"CORINTHIAN"

Structural details of Oil fuel bunkers.
& settling tank.

Lon 121241

CORINTHIAN

003467-003473-0338

003467-003473-0338



© 2020

Lloyd's Register
Foundation