

4 OCT 1950

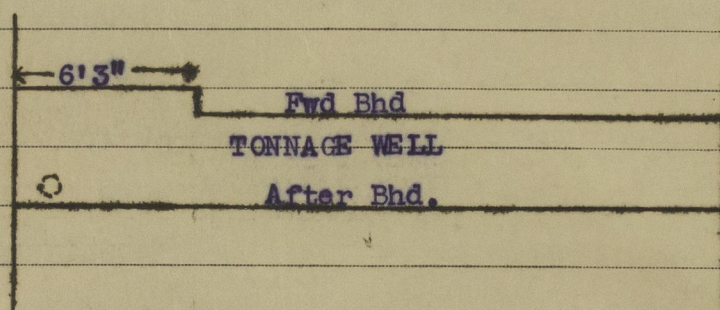
Lloyd's Register of Shipping.

Ship's Name "APPLIEDORE"

Official No. 161611

Memorandum of alterations reported since ship was surveyed for assignment of Load Lines in 7-1-46.

1. The forward tonnage bulkhead has been recessed on port side one frame space forward at wing to accomodate fire pump in tonnage well. One 6" vent has been fitted to tonnage well in way of fire pump. Coaming 30" x .30 - 30" high and closing appliances have been supplied.



2. The 4" air pipes to Nos. 2, 3 and 4 (abaft E.R.) double bottom tanks, now converted to carry oil, have been dispensed with and 6" air pipes have been fitted in lieu.

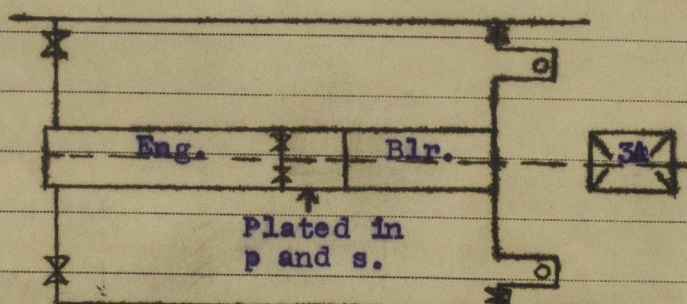
The height of the air pipes are 18" above the shelter deck.

Canvas covers have been supplied in addition to gauze.

3. 1 - 4 $\frac{1}{2}$ " and 1-2 $\frac{1}{2}$ " air pipes, p and s, have been fitted to the new oil fuel deep tanks. 1 - 4 $\frac{1}{2}$ " air pipe, p and s, has been fitted to the new oil fuel settling tanks. The height of the air pipes are 18" above the shelter deck. Canvas covers have been supplied in addition to gauze.

4. Casing top:- The saddle-back coal hatch on casing top has been satisfactorily plated over. A small hatch 2'6" x 2'6" has been fitted in the above plating for access with 8" B.A. coaming complete with 2 $\frac{1}{2}$ " rest bars, cleats 18" apart and batten bars, 3" wood covers have been fitted and two tarpaulins have been supplied. The casing sides have been satisfactorily plated in and stiffened.

5. Freeboard deck:- The small hatches p and s on the freeboard deck giving access to the old wing coal bunkers have been removed and satisfactorily plated over. A manhole with oiltight bolted cover has been satisfactorily fitted giving access to the new settling tanks p and s.



Freeboard assigned not affected by the alteration to the tonnage well bulkhead. Amended comp not made.

Complete