

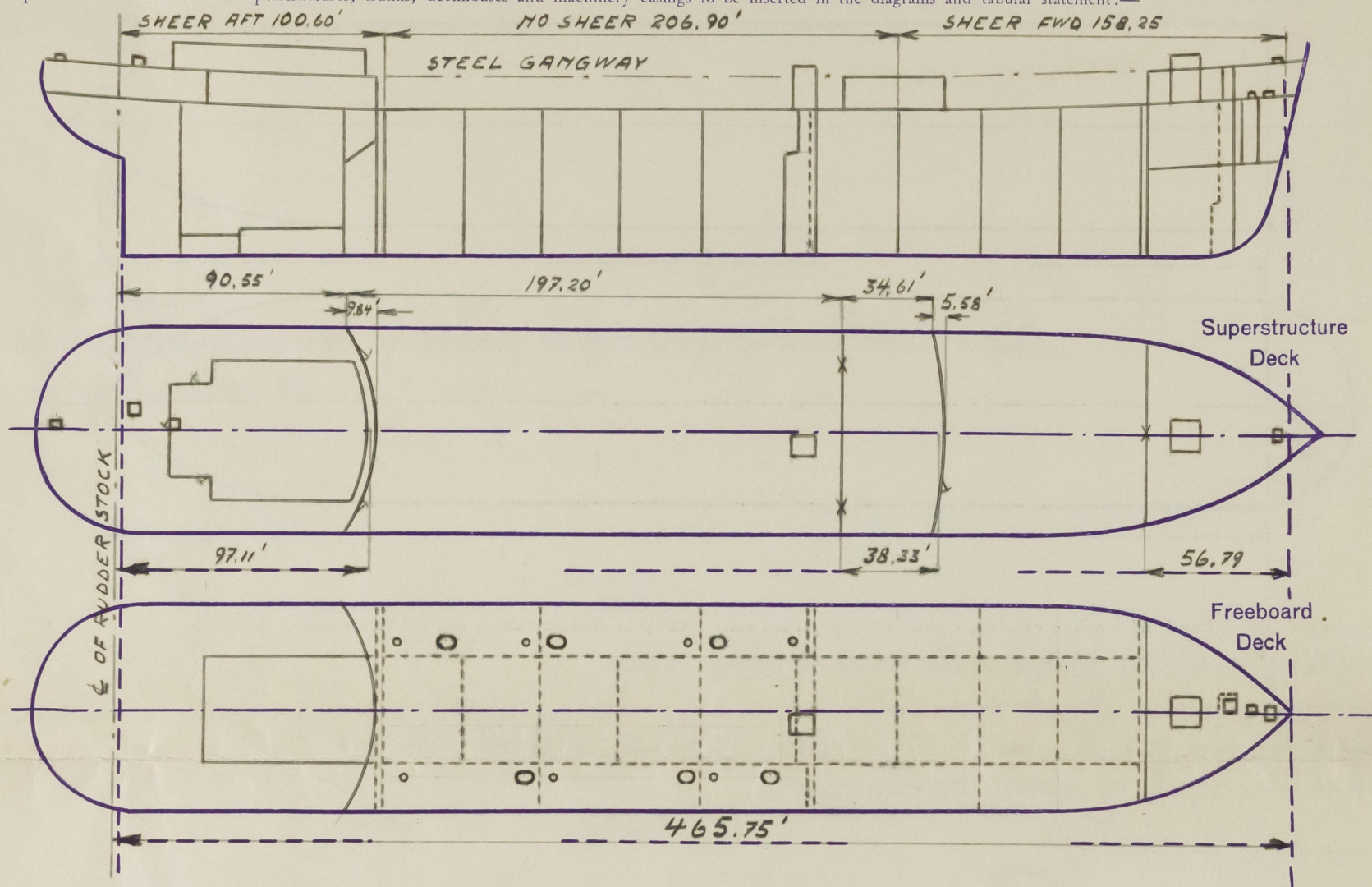
Lloyd's Register of Shipping.

SURVEYS FOR FREEBOARD.

(CONDITIONS OF ASSIGNMENT.)

Ship's Name *M/T "SVEABORG"* Port of Survey *Malmö.*
 Official Number *8644* Surveyor's Signature *Adolfen A. Börning*
 Nationality and Port of Registry *Swedish, Stockholm.* Date of Survey *Whilst building.*

Disposition and dimensions of superstructures, trunks, deckhouses and machinery casings to be inserted in the diagrams and tabular statement:—



Particulars of Superstructures, Trunks, Casings, Deckhouses.

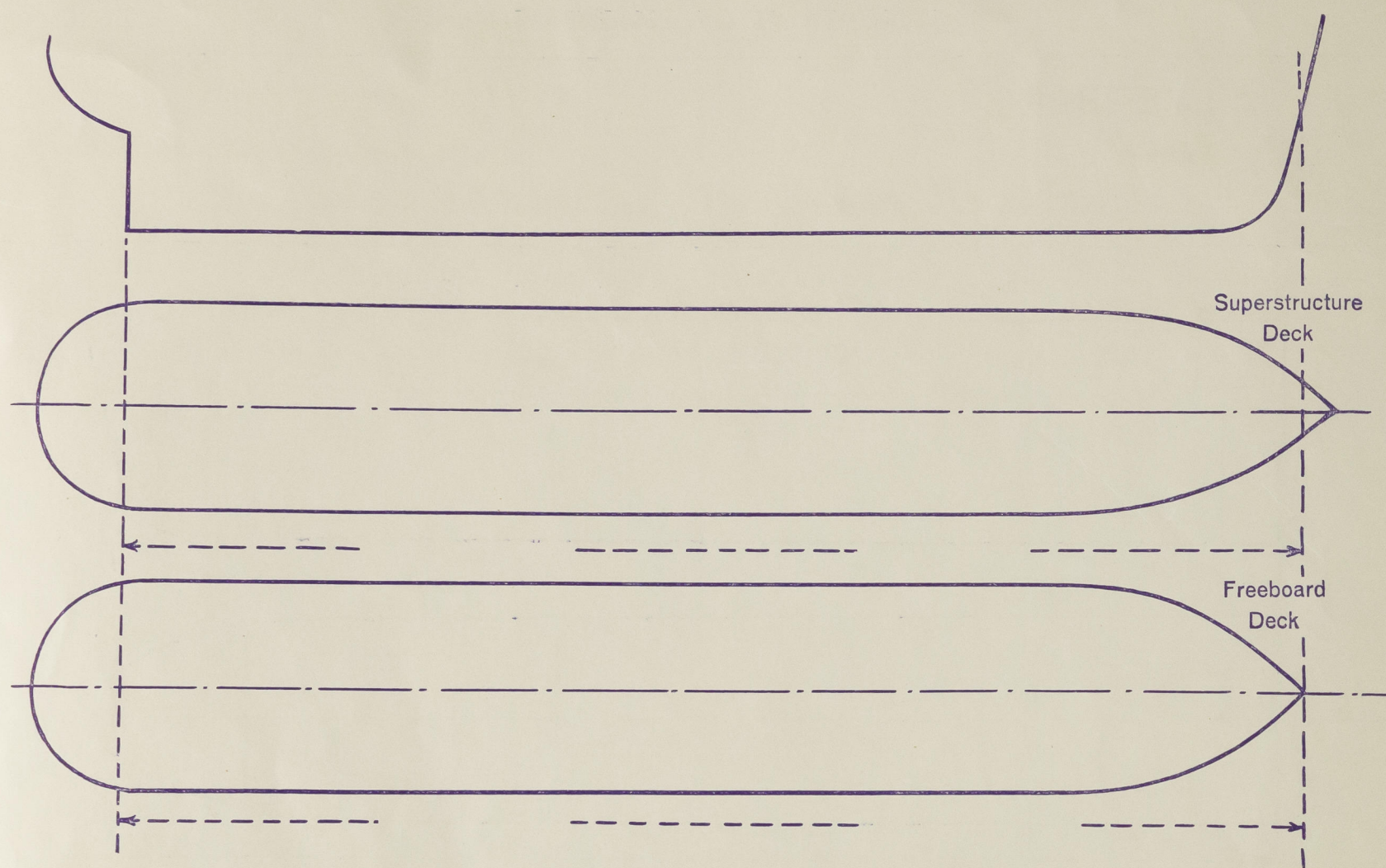
	Coaming	Plating mm.	Stiffeners mm.	Spacing mm.	End Attachments of Stiffeners	Size of Openings mm.	Height of Sills mm.	Height of Casings ft.
Poop Bulkhead <i>Side</i>	<i>to W. to dk.</i>	44	250×90×12 I	690-788	<i>to W. to dk. Side</i>	1520×635	640	7.75
Raised Quarter Deck Bulkhead <i>Centre</i>	" "	48	250×90×13 I	740-760	<i>to W. to dk. Side</i>	None	✓	7.75
Bridge, After Bulkhead	" "	32	75×65×10 I	855	<i>to bridge dk. longitudinal</i>	2200×940	None	7.75
Bridge, Forward Bulkhead	" "	46	250×90×10.5 I	855	<i>to W. to dk. Side</i>	1525×967	460	7.75
Forecastle Bulkhead	" "	32	90×75×9 I	788	<i>to longitudinal Side</i>	1940×1240	None	7.5
<i>Main Pump Room</i> Trunk, Aft	" "	32	90×65×8 I	510-610	<i>to W. Side</i>	1370×840	1220	9.75
Trunk, Forward								
Exposed Machinery Casings on Freeboard or Raised Quarter Deck								
Exposed Machinery Casings on Superstructure Deck <i>Boat deck</i>		28	75×50×8 I	765	<i>to W. Side</i>	None	✓	3.5
Machinery Casings within Superstructures not fitted with Class I Closing Appliances								
Deckhouses on <i>Poep</i> Deck Ship	125×65×8	F. 32 S. 28	100×10 FB. 75×8 "	710 610	✓	1545×635	460	7.5

Particulars of Closing Appliances (state if capable of being manipulated from both sides).

Poop Bulkhead	<i>Hinged W.I. steel doors, manipulated from both sides.</i>
Raised Quarter Deck Bulkhead	
Bridge, After Bulkhead	<i>Portable plates with hook bolts, spaced 12".</i>
Bridge, Forward Bulkhead	<i>Hinged W.I. steel door, manipulated from both sides.</i>
Forecastle Bulkhead	<i>Portable plates with hook bolts, spaced 12".</i>
Exposed Machinery Casings on Freeboard or Raised Quarter Deck	<i>Hinged W.I. steel door, manipulated from both sides.</i>
<i>Main Pump Room</i> Exposed Machinery Casings on Superstructure Decks	
Machinery Casings within Superstructures not fitted with Class I Closing Appliances	
Deckhouses on <i>Poep</i> Deck Ship	<i>2" thick teak doors, manipulated from both sides.</i>

PARTICULARS OF PROTECTION TO OPENINGS, ETC.

The following diagrams should be used to indicate the positions of cargo and coaling hatchways gangway, cargo and coaling ports, ventilators, companionways, etc., which would affect the seaworthiness of the ship:—



Particulars of fiddle, funnel and ventilator coamings, engine room skylight and other openings in machinery casing tops and their means of closing:—

Fiddle opening fitted with hinged steel cover.
 Funnel plating thickness 20".
 Vent. coamings:— Diam. 25"-37". Thickness 20"-26". Height 4.4'-8.4'.
 Steel skylights of strong construction.

Particulars of Flush Bunker Scuttles:—

None.

Particulars of Companionways:—

Poop space entrance at sides of poop deck house:—
 Size of openings 61" x 25 1/4". Height of sills above steel deck 18".
 2" thick solid teak doors, manipulated from both sides.

Particulars of Ventilators in exposed positions on freeboard and superstructure decks:—

Poop deck:— Diam. 6'-9"-12". Thickness 32"-36". Height 30".
 Bridge deck:— " 12" " 36" 30".
 Side deck:— " 12" " 40" 36".

Fore deck:— Service ports of strong construction.

The coamings are electrically welded to the decks and are provided with means for closing.

Particulars of Air Pipes in exposed positions on freeboard, raised quarter, or superstructure decks:

Poop & fore decks:— Gross masts 18" high.
 Fore deck:— " 7'-9" "
 Provided with means for closing.

Particulars of Gangway Cargo and Coaling Ports:— None.

Sveaborg.

Particulars of Scuppers and Sanitary Discharge Pipes:— No scuppers below freeboard deck.

Sanitary discharge pipes from poop deck house and from poop space are led overboard about 12" above 2nd deck. (Accessible in motor space), and those from bridge deck house led overboard above freeboard deck. All discharge pipes are fitted with storm valves and drain pipes from the poop space, also provided with non-detachable cork plugs at their inner ends.

Particulars of Side Scuttles:—

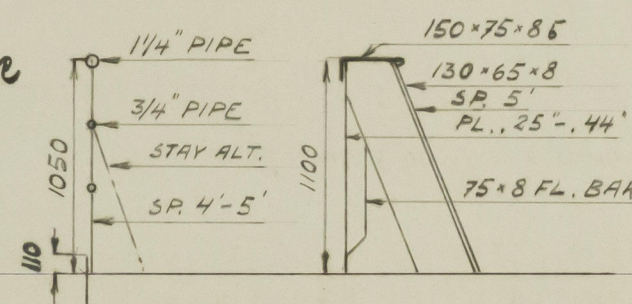
All side scuttles are of strong construction and fitted with hinged deadlights.

Vertical distance of Sill of lowest Scuttle above top of keel

About 39'.

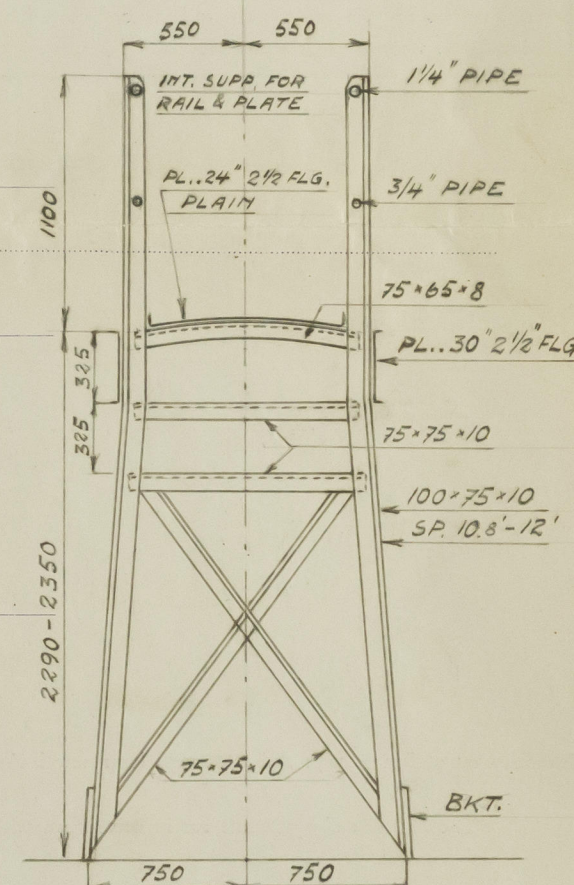
Particulars of Guard Rails:—

Bulwarks at fore part of fore well, on bridge deck and on fore part of poop deck 1100 mm. in height.
 Open rail elsewhere.



Particulars of Gangways, Lifelines, etc.:—

Gangway between poop, bridge and forecabin.



Particulars of Freeing Arrangements.

	Length of Bulwark	Height of Bulwark	Size of Freeing Ports	Number each side	Area each side	Rule area each side
After Well <i>Open rail</i>						
Fore part of Forward Well	35'	43"		2 pairs	6.5 sq'	

State position of each freeing port After Well:—
 (F. and A. position and height above deck edge) Forward Well:— From fore. 15' & 25'. Height above deck edge 4 1/2".

State whether the freeing ports are fitted with shutters, bars, or rails, and give particulars of such:—

Additional area where sheer is less than standard.

PARTICULARS OF PROTECTION TO OPENINGS, ETC.

Hatchways on Freeboard and Superstructure Decks.									
		Freeboard deck		Cargo deck		Superstructure deck			
Description of Hatchway		Cargo & Q.S. Deck	Mantle	Chambers & F.P.	Stairs	Stairs	Cargo	Stairs	Stairs
Dimensions of Hatchway		5' x 3'-6"	2' x 1'	16" x 18"	3' x 2'-3"	4' x 4'	4' x 2'-6"	11'-3" x 11'-2"	3'-10" x 2'-10"
COAMINGS	Height above Deck	32 1/2"	9"	4 1/2"	9"	16"	6"	32"	15"
	Thickness	40"	40"	40"	26"	40"	38"	44"	34"
	Stiffeners	3" x 2" x 40" L						6" x 3" x 44" L	
	Brackets, Stays							1. 2. at fore end.	
HATCH BEAMS	Number								
	Spacing								
	Scantling and Sketch								
	Bearing Surface								
FORE AND AFTERS	Number								
	Spacing								
	Unsupported Lengths								
	Scantling* and Sketch								
HATCH COVERS	Material								
	Thickness	46"	54"	40"	26"	32"	36"	32"	
	How fitted	Stayed	Hinged		Hinged	Stayed	Hinged		
	Bearing Surface								
Spacing of Cleats		14"-16"	17"	4"		17"-20"	12"-17"		
Number of Tarpaulins									
*) Are wood fore and afters steel shod at all bearing surfaces? <input checked="" type="checkbox"/>									
Are tarpaulins in good condition and in accordance with rule requirements? <input checked="" type="checkbox"/>									
Are battens and wedges efficient and in good condition? <input checked="" type="checkbox"/>									
Are lashings provided in accordance with rule requirements? <input checked="" type="checkbox"/>									

Particulars of any special features:— Longitudinal framing. Electrically welded.

Endorsement at first surveys and at surveys for renewal of Certificate:—

The fittings and appliances are in accordance with the particulars shown on this form (or as now modified) and are in good condition.

