

## Lloyd's Register of Shipping.

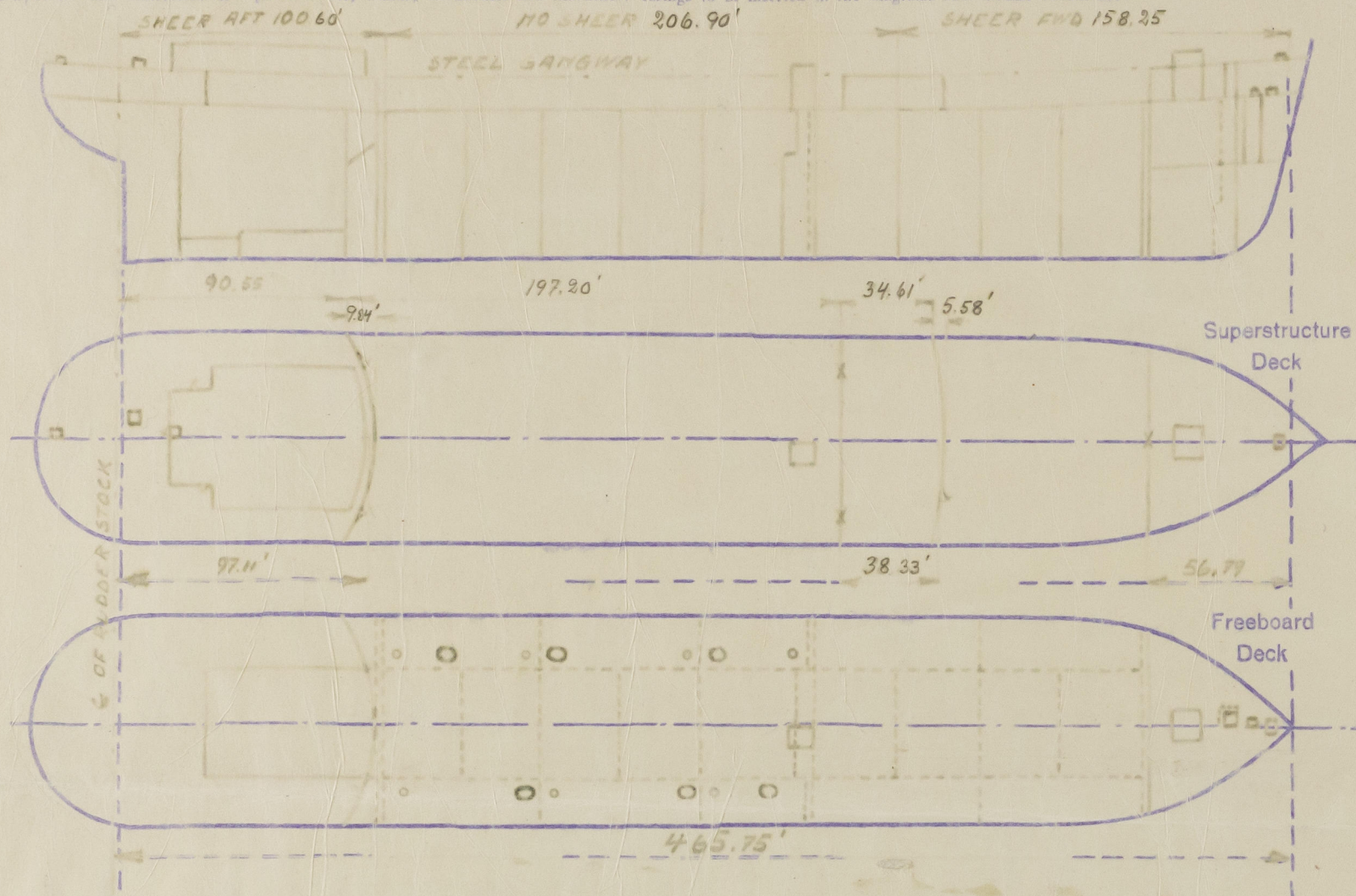
Index No. 37627.  
(For London Office only)

## SURVEYS FOR FREEBOARD.

(CONDITIONS OF ASSIGNMENT.)

Ship Name *M/T 'SVEABORG'*Port of Survey *Malmö.*Official Number *-*Surveyor's Signature *Anders A. Jöring*Nationality and Port of Registry *Swedish, Stockholm.*Date of Survey *Whilst building.*

Disposition and dimensions of superstructures, trunks, deckhouses and machinery casings to be inserted in the diagrams and tabular statement.—



Particulars of Superstructures, Trunks, Casings, Deckhouses.

	Closing	Plating mm.	Stiffeners mm.	Spacing mm.	End Attachments of Stiffeners	Size of Openings mm.	Height of Sills mm.	Height ft.	
Poop Bulkhead	<i>Siders. to W. to dk.</i>	.44	250x90x12 I	690-738	<i>dk. top</i>	590x635	640	7.75	✓
Raised Quarter Deck Bulkhead	<i>Centre "</i>	.48	250x90x13 I	740-760	<i>dk. top &amp; bott.</i>	None	✓	7.75	✓
Bridge, After Bulkhead	" "	.32	75x65x10 I	855	<i>to bridge dk. longitudinal</i>	2200x940	None	7.75	✓
Bridge, Forward Bulkhead	" "	.40	250x90x10.5 I	855	<i>to W. to dk. top</i>	1525x967	460	7.75	✓
Forecastle Bulkhead	" "	.32	90x75x9 I	738	<i>to longitudinal top</i>	1940x1240	None	7.5	✓
Main Pump Room	" "	.32	90x65x8 I	510-610	<i>to W. top</i>	1370x840	1220	9.75	✓
Trunk, Forward									
Exposed Machinery Casings on Freeboard	<i>for centre part of poop bulkhead.</i>								
Exposed Machinery Casings on Deck	<i>Boat deck.</i>	.28	75x50x8 I	765	<i>dk. top</i>	None	✓	2.5	✓
Machinery Casings within Superstructures not fitted with Class I Closing Appliances									
Deckhouse on <i>Poop</i> Deck	<i>125x65x8 F.</i>	.32	100x10 FB	710	✓	1545x635	460	7.5	✓
	<i>S.</i>	.28	75x8 "	610					

Particulars of Closing Appliances (state if capable of being manipulated from both sides).

Poop Bulkhead	<i>Hinged W.S. steel doors, manipulated from both sides.</i>	✓
Raised Quarter Deck Bulkhead		
Bridge, After Bulkhead	<i>Portable plates with hook bolts, spaced 12".</i>	✓
Bridge, Forward Bulkhead	<i>Hinged W.S. steel doors, manipulated from both sides.</i>	✓
Forecastle Bulkhead	<i>Portable plates with hook bolts, spaced 12".</i>	✓
Exposed Machinery Casings on Freeboard	<i>Hinged W.S. steel doors, manipulated from both sides.</i>	✓
Main Pump Room		

Exposed Machinery Casings on Superstructures not fitted with Class I Closing Appliances

*Poop**2" thick teak doors, manipulated from both sides.*

© 2021

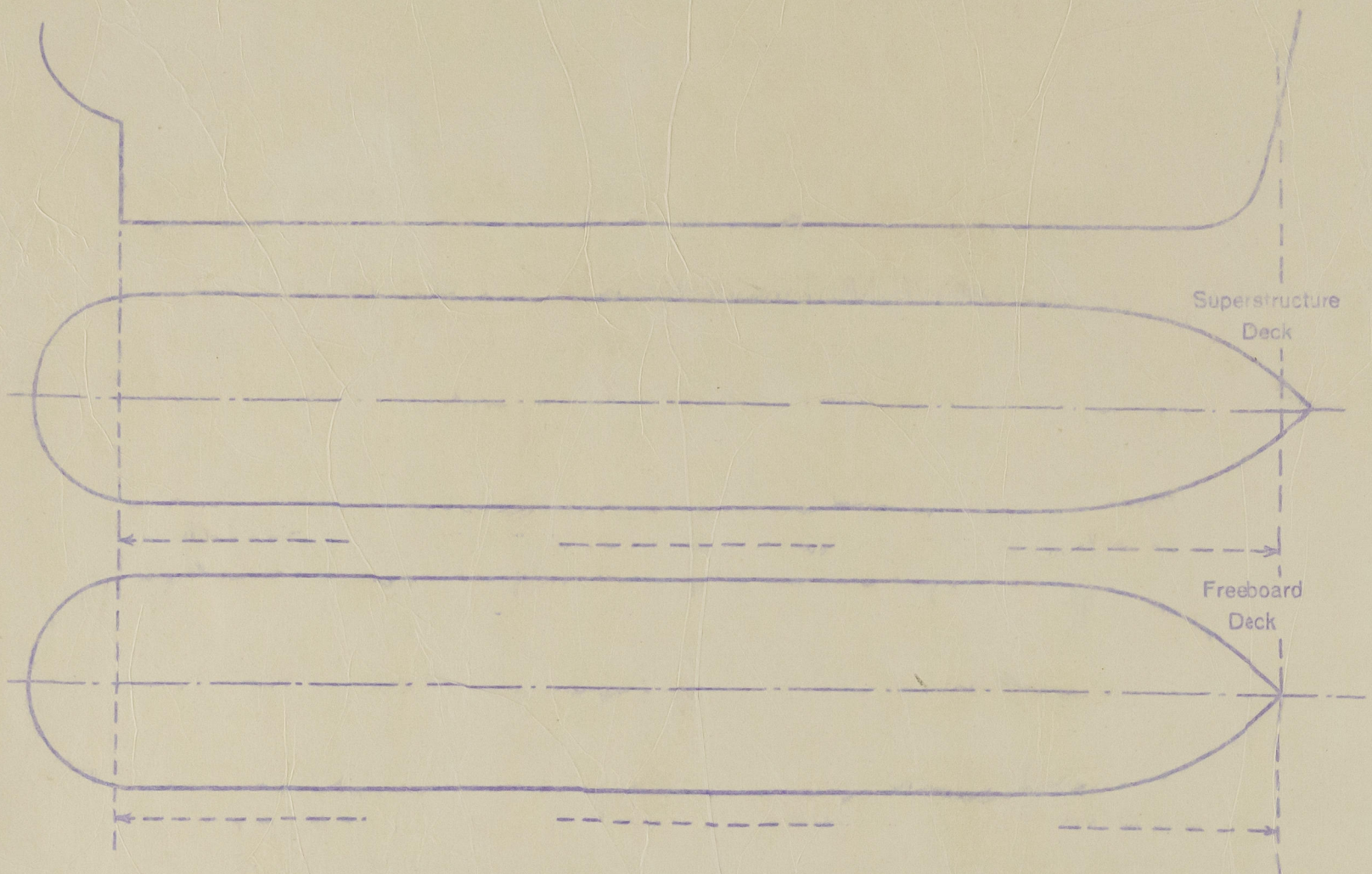
Lloyd's Register  
Foundation

003450-00457-0364-2



## PARTICULARS OF PROTECTION TO OPENINGS, ETC.

The following diagrams should be used to indicate the position of large and small hatchways, cargo and coaling ports, ventilators, companionways, etc., which would affect the seaworthiness of the ship:—



Particulars of fidley, funnel and ventilator coamings, engine room skylight and other openings in machinery casing tops and their means of closing:—

Fidley opening fitted with hinged steel cover.  
 Funnel plating thickness .20"  
 Vent. coamings - Diam. 25'-37' Thickness .20' - .26' Height 4.4' - 8.4'.  
 Steel skylights of strong construction.

Particulars of Flush Bunker Scuttles:—

None.

Particulars of Companionways:—

Protrusion entrance at sides of poop deck house:—  
 Size of openings 61" x 25 1/4" Height of side above steel deck 18'.  
 2" thick solid bulk doors, manouverable from both sides.

Particulars of Ventilators in exposed positions on freeboard and superstructure decks:—

Poop deck - Diam. 6'-9'-12" Thickness .32' - .36" Height 30'.  
 Bridge deck - " 12" " .36" " 30'.  
 Mid. deck - " 12" " .40" " 36'.  
 Fore. deck - Brick posts of strong construction.

The coamings are electrically welded to the decks and are provided with means for closing.

Particulars of Air Pipes in exposed positions on freeboard, raised quarter, or superstructure decks:—

Poop & fore. decks - Coamings 18" high.  
 Mid. deck - " 7'-9" "  
 Provided with means for closing.

4



© 2021

Lloyd's Register  
Foundation



Particulars of Scuppers and Sanitary Discharge Pipes —

*To scuppers below foreboard deck —  
Sanitary discharge pipes from poop deck house and from poop space are led  
overboard about 12" above 2nd deck. (Accessible in motor space), and those from  
bridge deck house led overboard above foreboard deck. All discharge pipes are  
fitted with storm valves and drain pipes from the poop space, also provided  
with non-attachable screw plugs at their lower ends.*

Particulars of Side Scuttles —

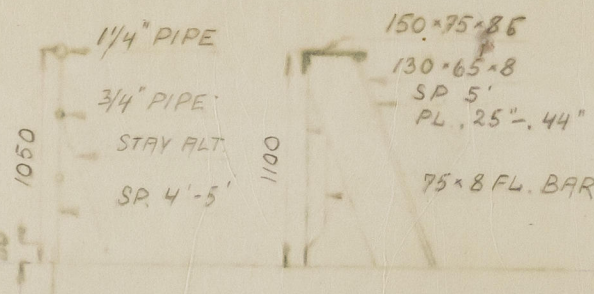
*All side scuttles are of strong construction and fitted with  
hinged deadlights.*

Vertical distance of sill of lowest Scuttle above top of keel

*About 39' ✓*

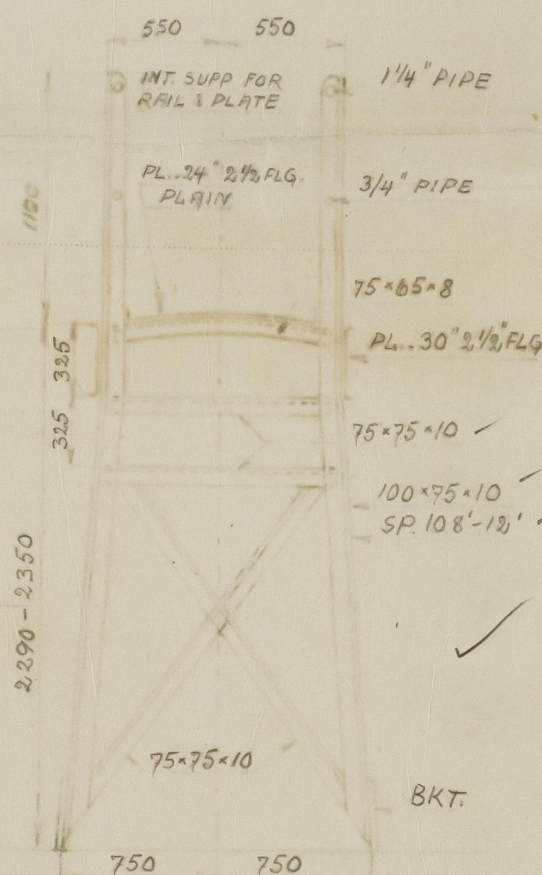
Particulars of Guard Rails —

*Bulwarks at fore part of fore  
well, on bridge deck and on  
fore part of poop deck  
1100 mm. in height.  
Open rail elsewhere.*



Particulars of Gangways, Lifelines, etc. —

*Gangway between poop, bridge and forecabin.*



Particulars of Freeing Arrangements.

	Length of Bulwark	Height of Bulwark	Size of Freeing Ports	Number each side	Area each side	Rule area each side
After Well			28" x 28" x 28"			
Fore part of	35'	43"	9" x 6"	2 pair	6.5 sq'	
Fore Well						
State position of each freeing port	After Well: —					
State position of each freeing port	Forward Well: —					
State position of each freeing port	From fore 15' to 25'. Height above deck edge 4 1/2' —					
State position of each freeing port	State position of each freeing port are fitted with shutters, bars, or rails and give particulars of such —					
Additional notes	Additional notes, where it is less than standard.					



© 2021

Lloyd's Register  
Foundation

003450-003457-036472



# PARTICULARS OF PROTECTION TO OPENINGS, ETC.

		Hatchways on Freeboard and Superstructure Decks.							
		Mainboard deck		Cargo deck		Tarp deck		Tide deck.	
Description of Hatchway		Cargo & O.S. Manhole		FP		Tide		Cargo Tide space.	
Dimensions of Hatchway		5' x 3'-6"	2' x 4'	16' x 18'	3' x 2'-3"	4' x 4'	4' x 2'-6"	11'-3" x 11'-2"	3'-10" x 2'-10"
COAMINGS	Height above Deck	32 1/2"	9"	4 1/2"	9"	16"	6"	32"	15"
	Thickness	40"	40"	40"	26"	40"	38"	44" ✓	34" ✓
	Stiffeners	Vertical	3' x 2" x 40" L					6' x 3" x 44" L	
	Brackets, Stays	✓	✓	✓	✓	✓	✓	1. 2 at fore end.	
MATCH BEAMS	Number								
	Spacing								
FORE	Unsupported Lengths								
	Scantling and Sketch								
HATCH COVERS	Material				Steel				
	Thickness	46" / 54"	40"	26"	32"	36" / 32"			
HATCH COVERS	How fitted	Stayed - Hinged		Hinged	Stayed - Hinged				
	Bearing Surface								
Spacing of Ralls		14" - 16"	17"	4"		17" - 20"	12" - 17"		
Number of Tarpaulins		✓							

\*) Are wood fore and afters steel shod at all bearing surfaces? ✓  
 Are tarpaulins in good condition and in accordance with rule requirements? ✓  
 Are battens and wedges efficient and in good condition? ✓  
 Are lashings provided in accordance with rule requirements? ✓

Particulars of any special features: — Longitudinal framing. Electrically welded ✓

Particulars of any special features: —

The fittings and appliances are in accordance with the particulars shown on this form (or as now modified) and are in good condition.



© 2021

Lloyd's Register Foundation