

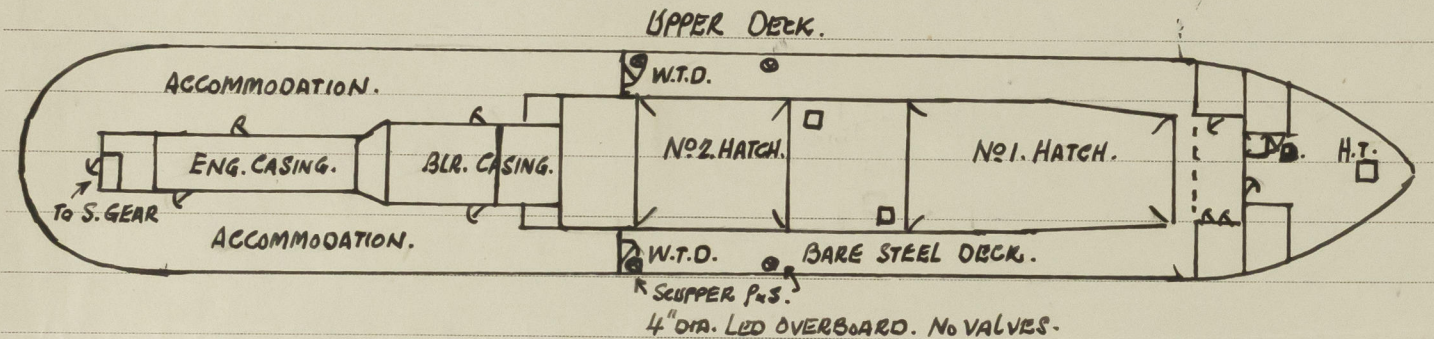
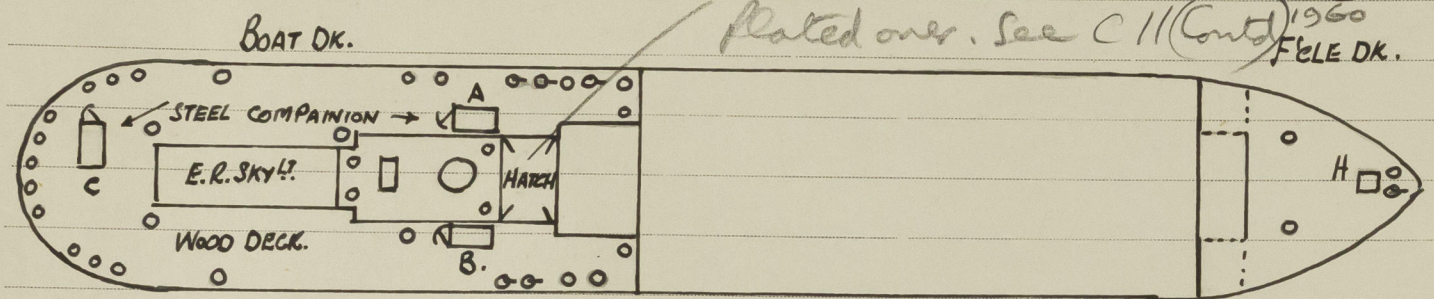
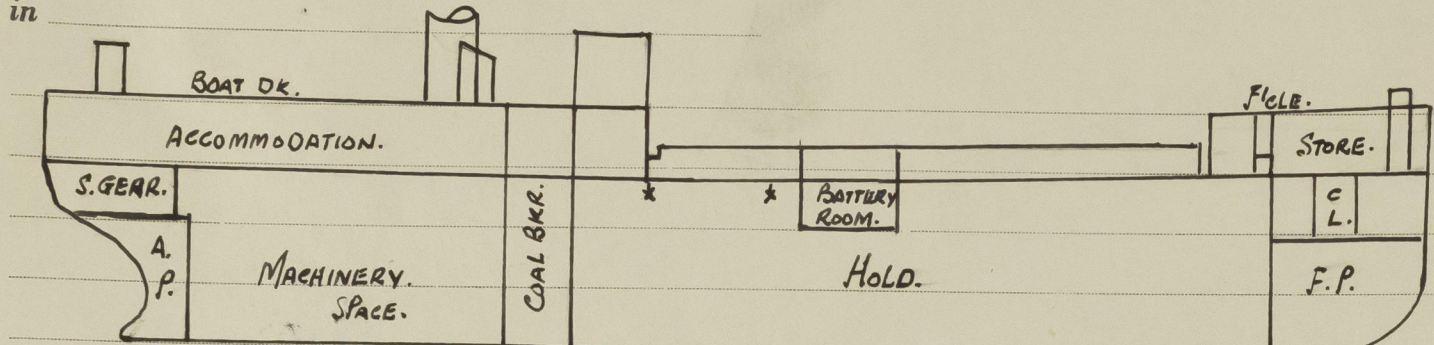
# LLOYD'S REGISTER OF SHIPPING

UNITED WITH THE BRITISH CORPORATION REGISTER

Ship's Name "GUINNESS"

Official No. 162577.

Memorandum of alterations reported since ship was surveyed for assignment of Load Lines in



## HATCHWAYS ON FREEBOARD AND SUPERSTRUCTURE DECKS.

| Description of Hatchway | NO. 1.                       | NO. 2.            | BATTERY ROOM. |
|-------------------------|------------------------------|-------------------|---------------|
| Dimensions of Hatchway  | 42' 6" x 25' 18"             | 26' 25' 18" x 18" | 18" x 18"     |
| COAMINGS                | Height above Deck            | 3' 9"             | 6"            |
|                         | Thickness { Sides } { Ends } | .444              | .516          |
|                         | Stiffeners                   | 9 x 3 x .468      | 9 x 3 x .468  |
|                         | Brackets, Stays              | 5                 | 3             |
| HATCH BEAMS             | Number                       | 8                 | 5             |
|                         | Spacing                      | 4' 9"             | 4' 4"         |
|                         | Scantling and Sketch         | 20 1/2 x .38      | 19 1/2 x .38  |
|                         | Angles                       | 5 x 3 x .50       | 5 x 3 x .50   |
| FORE AND AFTERS         | Number                       |                   |               |
|                         | Spacing                      |                   |               |
|                         | Unsupported Lengths          |                   |               |
|                         | Scantling* and Sketch        |                   |               |
| HATCH COVERS            | Material                     | WOOD              | STEEL         |
|                         | Thickness                    | 3"                | 5/16"         |
|                         | How fitted                   | F x A             | WATER TIGHT   |
|                         | Bearing Surface              | 3                 | 6             |
| Spacing of Cleats       | 24"                          | 24"               | 6             |
| Number of Tarpaulins    | 2                            | 2                 | TOGGLES       |

COVERS. ENDS. \*Are wood fore and afters steel shod at all bearing surfaces? YES. Are battens and wedges efficient and in good condition? YES. Are tarpaulins in good condition and in accordance with rule requirements? YES. Are lashings provided in accordance with rule requirements? YES. STEEL WIRE x SCREWS

