

SS N° 74

MIDSHIP SECTION

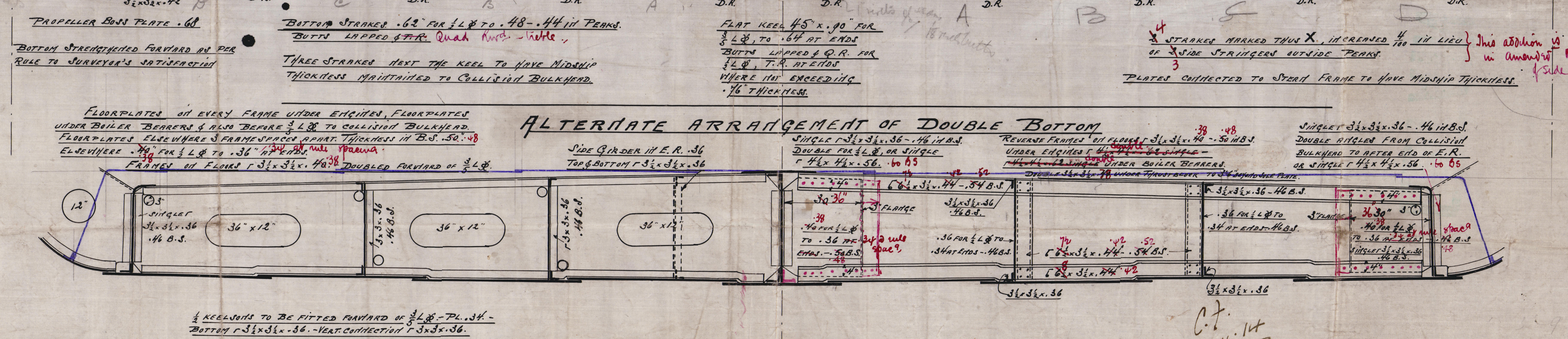
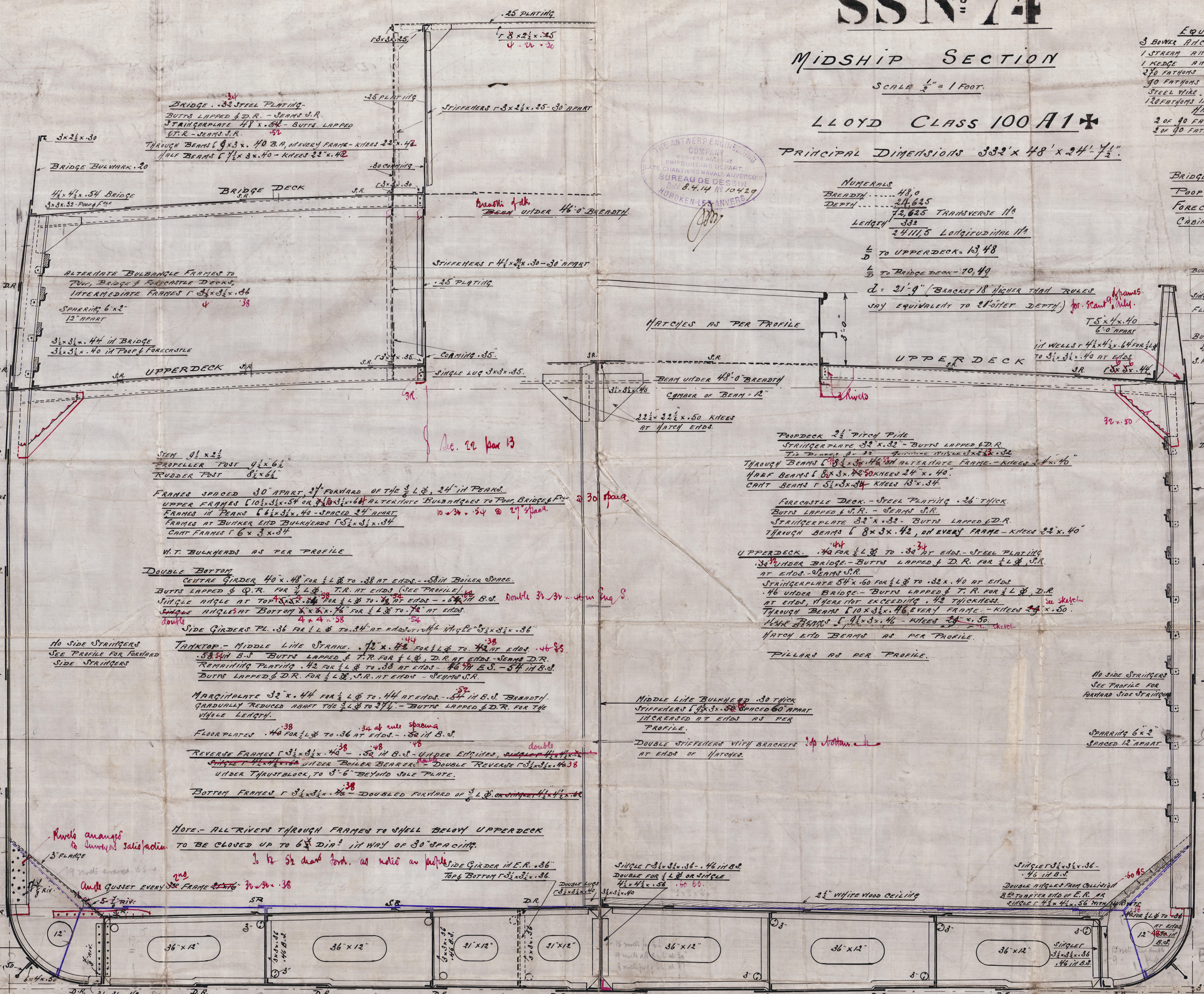
SCALE 1" = 1 FOOT.

LLOYD CLASS 100 A1*

PRINCIPAL DIMENSIONS 332' x 48' x 24' 1/2"

EQUIPMENT
3 BOW RIGGERS 1/2" ENDS, STOCKLESS EACH.
1 STEADY RIGGER 1/2" ENDS, EA. STOCK.
1 KEDGE RIGGER 1/2" ENDS, EA. STOCK.
3/4 FATHOMS 1" STAY CABLE CABLE
30 FATHOMS 1/2" STAY STEEL WIRE OR 3/4 FLEXIBLE
STEEL WIRE
12 FATHOMS 1/2" STAY OR 4" STEEL WIRE OR 3" F.W. TOW LINE.
HANDERS & WHARF
2 OF 10 FATHOMS OF 7" HEMP OR 2 1/2" STEEL WIRE ROPE
3 OF 10 FATHOMS OF 7" HEMP OR 2 1/2" STEEL WIRE ROPE

EQUIPMENT
BRIDGE 87 1/4
POOP 25 83
FORECASTLE 21 30
CABIN 80 x 7 x 0.5 250,00
249 11,50
EQUIPMENT N° 25100 36



23.24.14
7.5.14
23.7.14
17.4.19

BRIDGE SUPERSTRUCTURE
15' x 6' 6\"/>

UPPERDECK SUPERSTRUCTURE
14' x 4' 6\"/>

IN WAY OF BRIDGE
60 FOR 1/2\"/>

60 FOR 1/2\"/>

60 FOR 1/2\"/>

FLOORPLATES ON EVERY FRAME UNDER ENGINES, FLOORPLATES UNDER BULKHEADS & ALSO BEHIND 1/2\"/>

4 KEELJOISTS TO BE FITTED FORWARD OF 1/2\"/>

UPPERDECK SUPERSTRUCTURE, OUTSIDE
BRIDGE 45' x 8' 6\"/>

OUTSIDE BRIDGE 45' x 6' 6\"/>

NO SIDE STRIPPERS
SEE PROFILE FOR FORWARD SIDE STRIPPERS

SPACING 6' x 2'
SPACED 12' APART

25' WHITE WOOD CEILING

DOUBLE RIVETED FROM COLLISION
BULKHEAD TO AFTER END OF E.R.

33.22.14
22.10.14
3.7.14
23.4.14

Messrs The Anchor & Co

No. 7A

Midship Section.

30" Shacing (alternative)

S. W. N. H. "DIETRICH
S. W. N. H. "OLDENDORFF"

Ant. 11502



© 2021

Lloyd's Register
Foundation

003450 - 003457 - 0126