

N.T. BULHEADS No 524. 40. - 32 PLATES (VARTY)
STIFFENERS L 4 x 3 x 50 - 30 PART
SINGLE GALE TO SHELL & TIGATOR L 5 x 5 x 46.
" " TO DECK L 3 1/2 x 3 1/2 x 34.

SS N^o 74

PROFILE & DECK PLAN. (30" diameter.)

PRINCIPAL DIMENSIONS 332'-0" x 48'-0" x 24'-7 1/2"

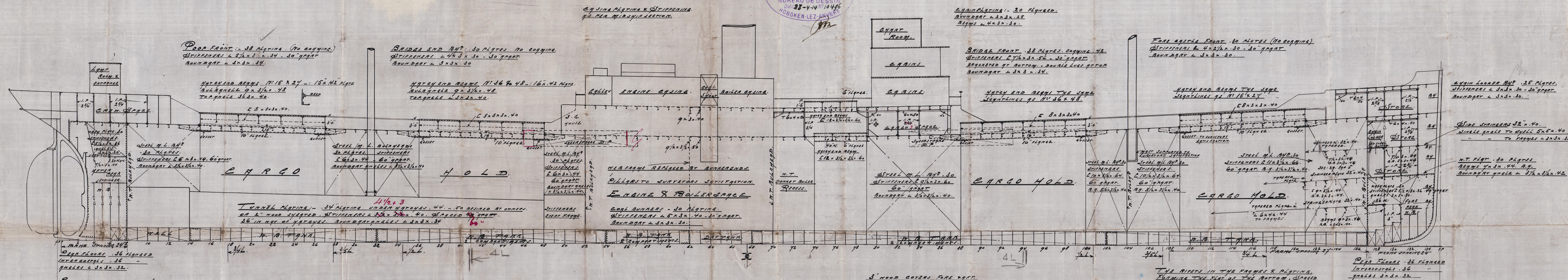
— Scale 1/100 of full size.

THE ANTWERP ENGINEERING
COMPANY
SOCIÉTÉ ANONYME
SHIPBUILDING DEPARTMENT
LATE CHANTIERS NAVALS ANVERS-OS
BUREAU DE DESSIN
Date: 28-4-14 N° 10496
HOBOKEN-LEZ-ANVERS

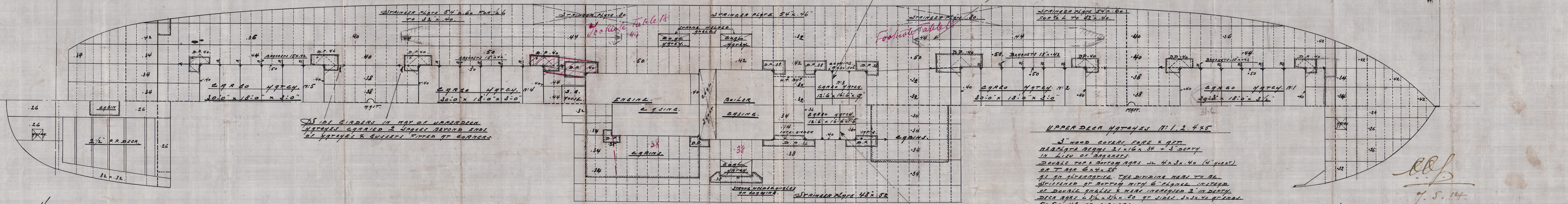
M.T. BULNHED N. 104 - 32 PLATES PART
DIFFERENCE L 10x 3 1/2 x .54 - 30 PART
SINGLE GALE TO SHELL & RYNN TOP L 5 x 5 x .48
" " TO DECK L 3 1/2 x 5 1/2 x .34

} UNDER 25 FT

W.T. BULAND 7/24: .36 Mag. in bag of 29. 28 empty (part)
STRECHERS (part) 2 8.5x4.50 - 24 part in bag of W.A. ARPERS in W.T. bag
Single shell to shell in bag of 2 8.5x.50.
" " " 2 8.5x4.36.
No horizontal STRECHERS nor BAGS. BAGS FITTED in bag of STRECHERS.
2 8.5x4.36 - 24 part (no ARPERS)
ARPERS on lower T.D.



HALF PLAN OF UPPER DEK.



1/2 PLAN OF POOP DECK.

— 1/2 PLAN OF BRIDGE DECK. —

1/2 PLAN OF FORE CASTLE DECK.

3" HOOD COVER FOR 45T
WEARPLATE BEAMS 18x14x.34
+3" DEPTH IN LIEU OF BRAGHETS
1L 4x3x.40 TOP & BOTTOM
OR T 6x4x.58
FOR DIVIDING HEAD SEE NOTE
FOR UPPER DECK HATCHES.

Messrs The Antwerp Eng Co.

No 74

Profile & Deck Plans
alternative 30" chacing

n/n "DIETRICH OWENDORFF"

S. "Winn"

Ant. 11502



© 2021

Lloyd's Register
Foundation