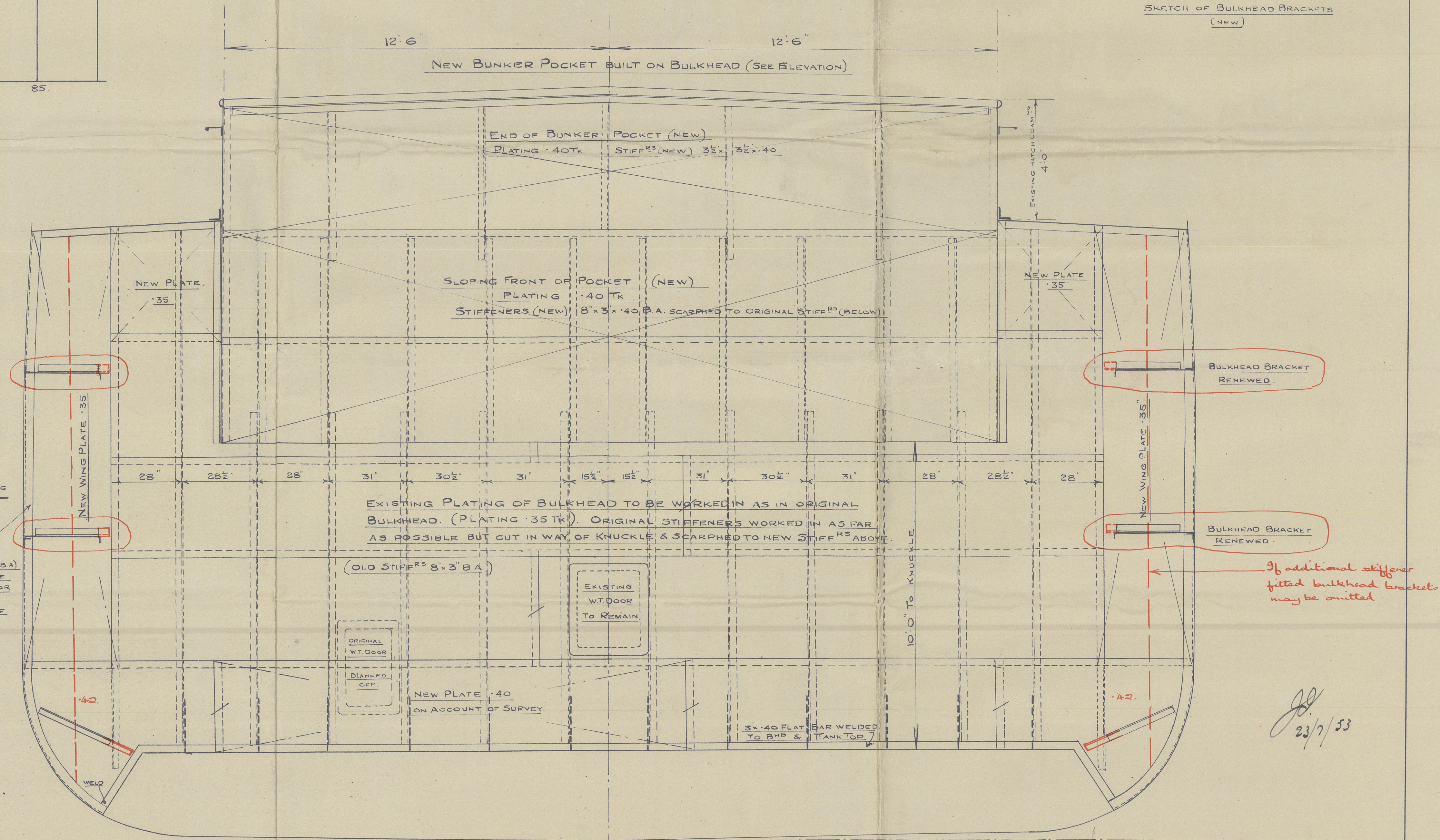
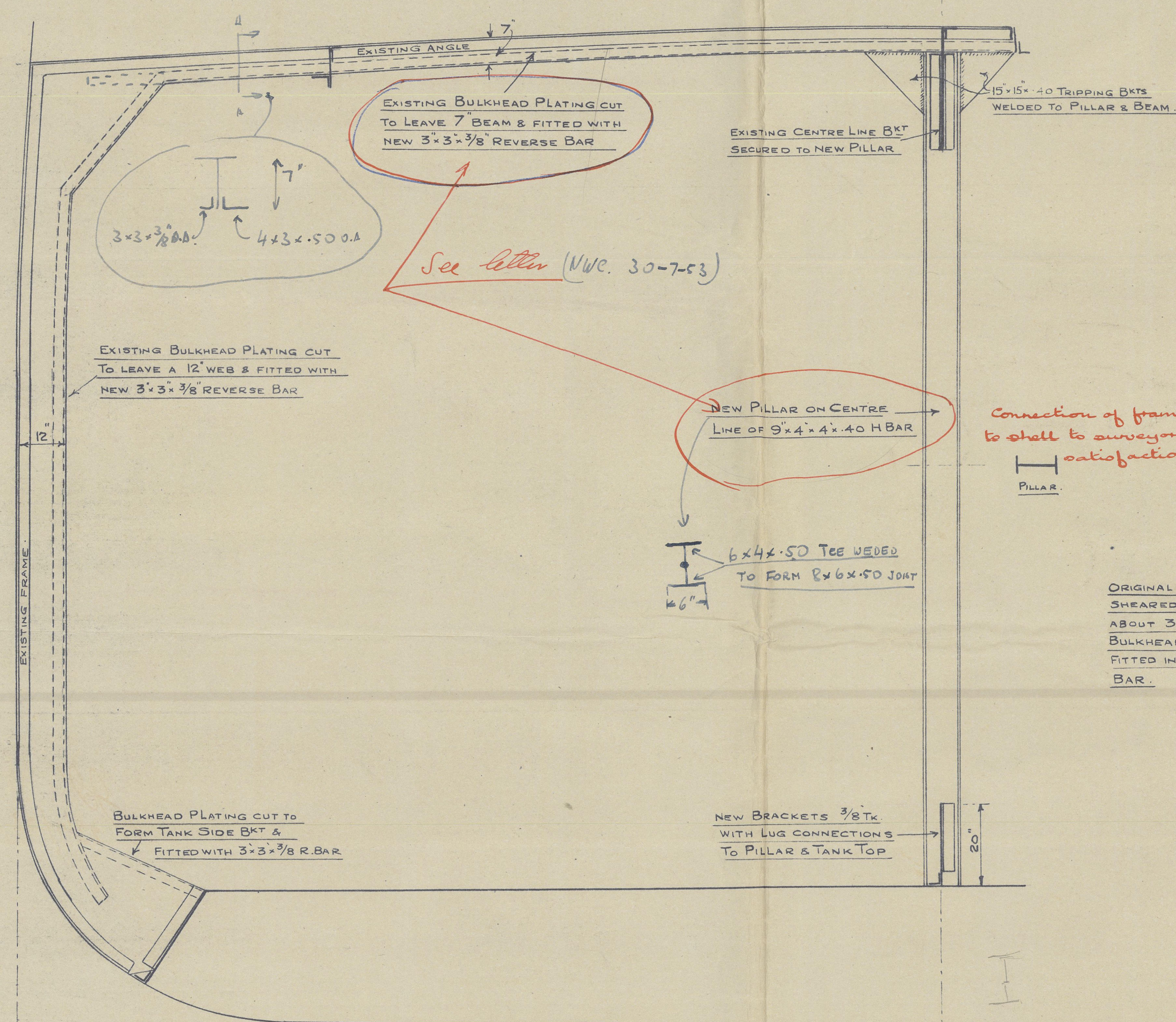
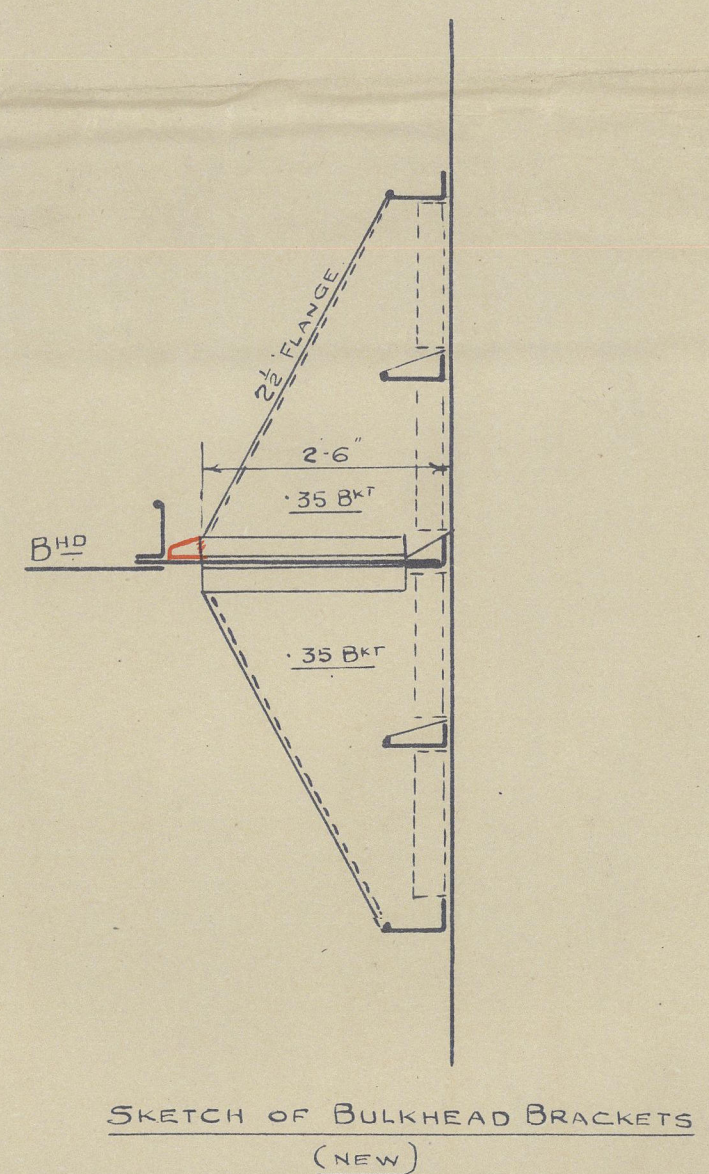
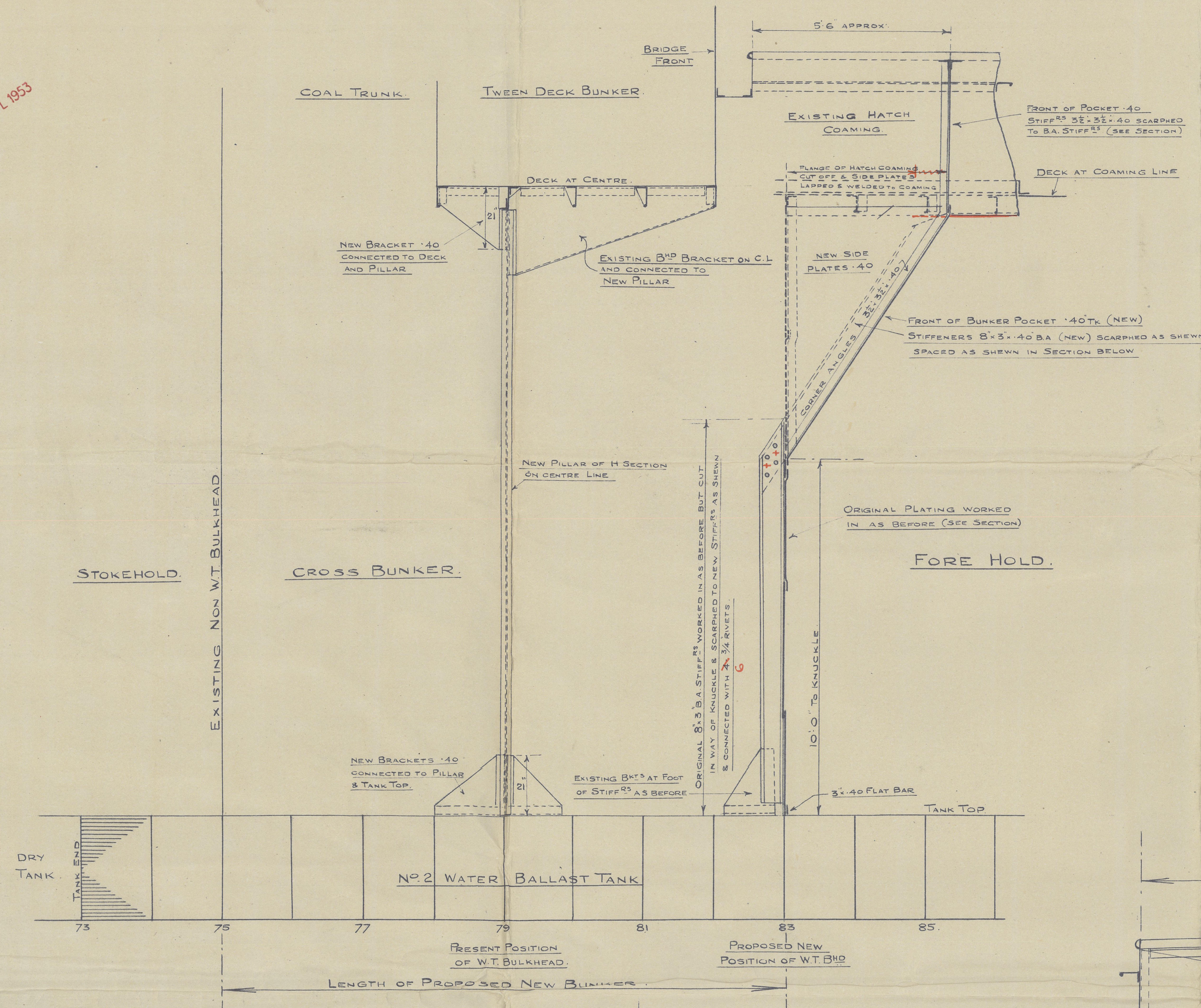


24 JUL 1953

—  $\frac{5}{8}$  "LIGHTFOOT"—

PROPOSED EXTENSION OF BUNKER.  
WT. BULKHEAD ON 79 FRAME MOVED  
FORWARD TO 83 FRAME

SCALE  $\frac{1}{2}$ " = ONE FOOT





"KYLE Q4E<sup>E</sup>N" Ex. "LIGHTFOOT"

NWC RPT. N<sup>o</sup>

NEWCASTLE-ON-TYNE, No. 110465.

003434-003443-0290



© 2020

Lloyd's Register  
Foundation