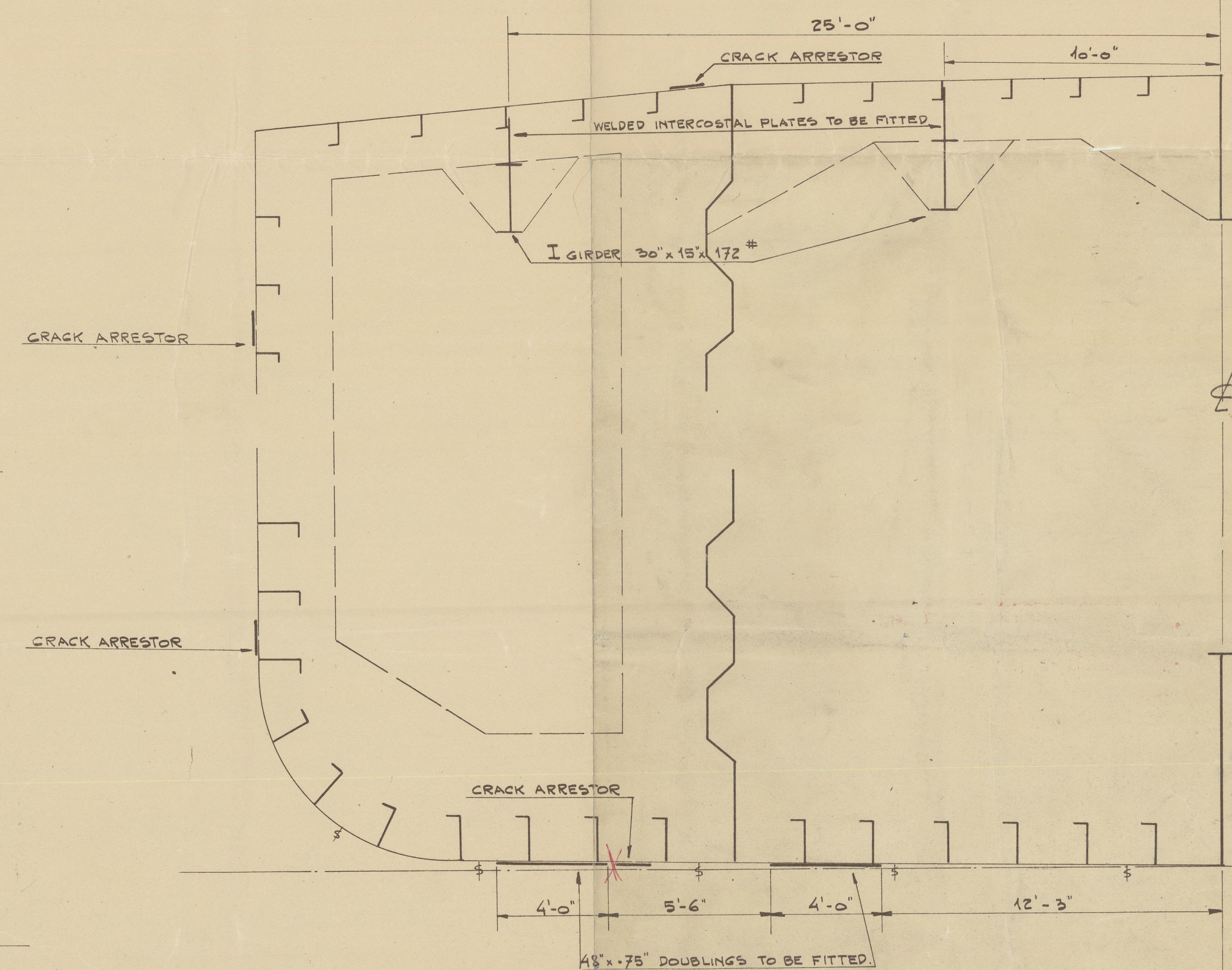
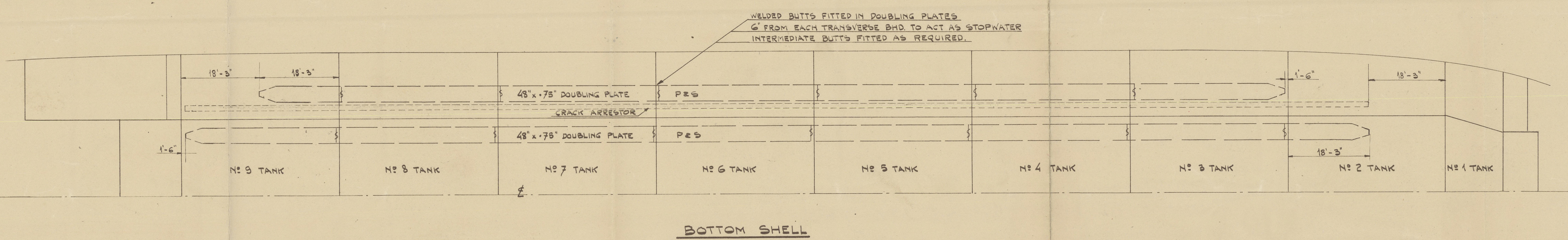
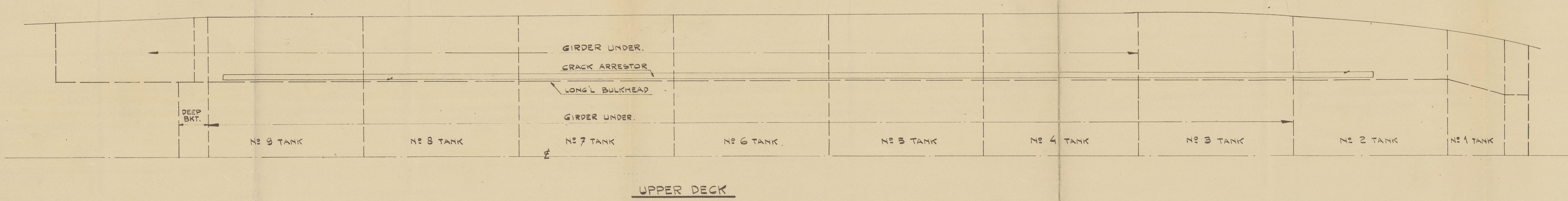
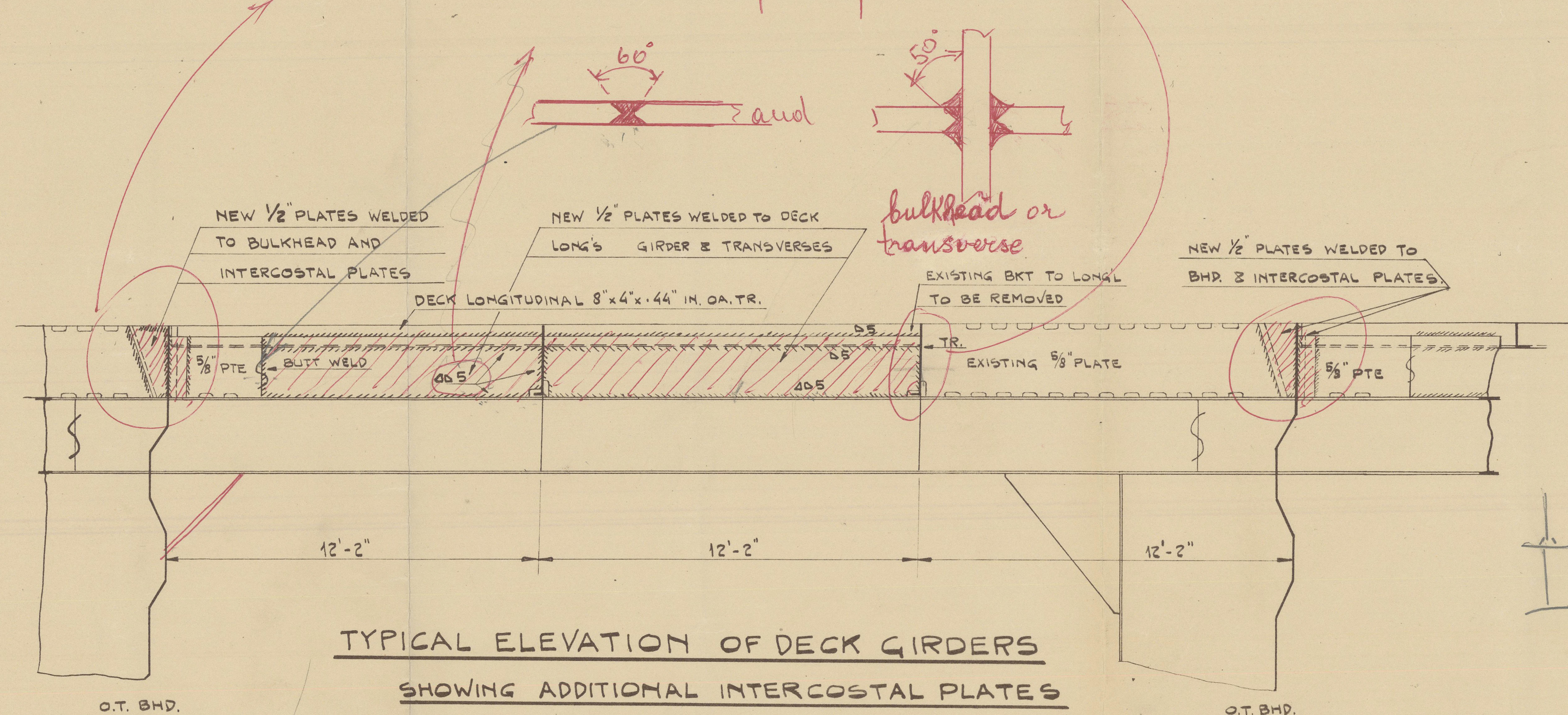
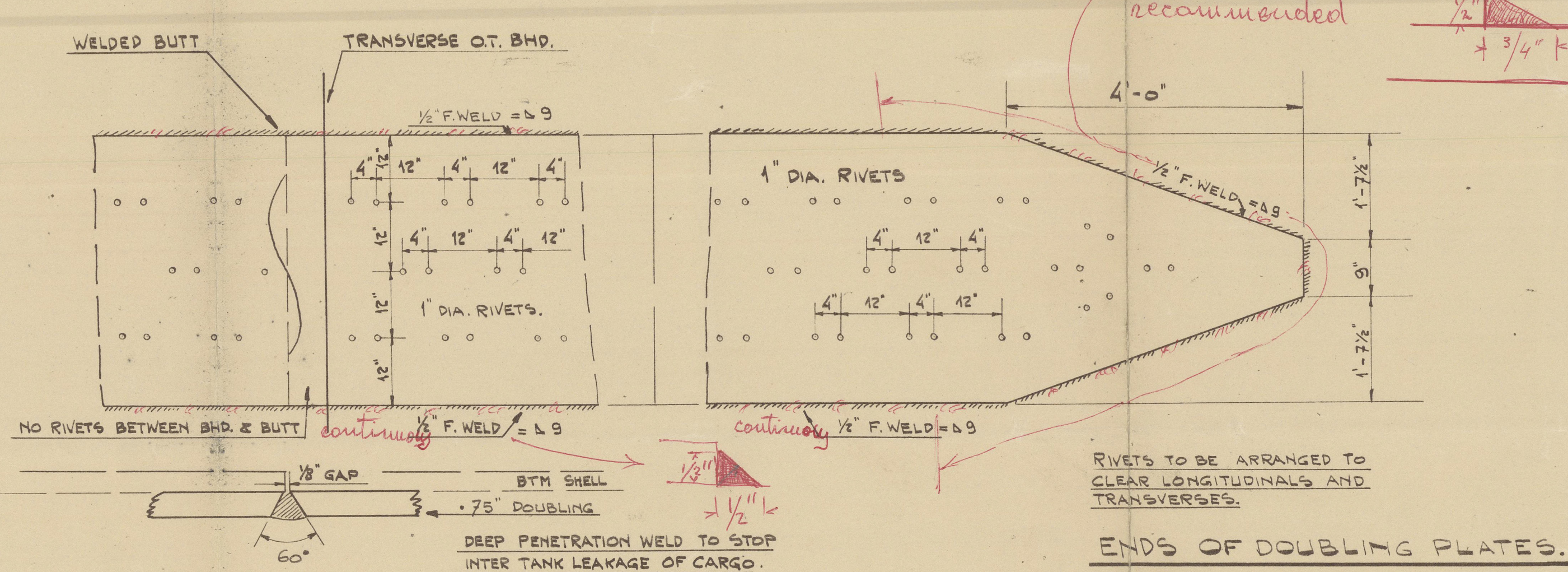


No lapped joints but all joints are to be with complete penetration



Material according to American Bureau Rules Class B steel.



SI APPROVA
(con le correzioni segnate in rosso)
No di approv. 21296
REGISTRO ITALIANO NAVALE
DIREZIONE GENERALE
Gabinetto 4316/163
L'approvazione è limitata a quanto convenientemente rappresentato e indicato. Ogni altro punto o particolare dovrà essere approvato separatamente dal Funzionario del Registro incaricato della sorveglianza.

WILTON-FUENOORD SCHIEDAM										REPARATIE		TOTAL GEWICHT	
AUTORENTOEGT VOORBEHOUDEN VOLGENS DE WET										AUFZUGEN		IN kg	
SCHAAL:		TOEGELAATTE VOLGENS I.S.A.		MAATAFWIJKEN BIJ BEWERKTE PLAKKEN		ZONDER TOEGELAATTE TOLERINGEN		VOLGENS DE WET		AUFZUGEN		IN kg	
NOT TO SCALE		VOLGENS I.S.A.		TOEGELAATTE TOLERINGEN		ZONDER TOEGELAATTE TOLERINGEN		VOLGENS DE WET		AUFZUGEN		IN kg	
MACH. BOUW OF ORDEER NO		GROEP		TEK. NO		AANVAL BLADEN		MAAL		MATERIAAL		LUST NO	
2023													
BELONGS TO										T2 TANKERS			
ROTTERDAM REPORT NO. 52854													
ADDITIONAL STIFFENING													
ON DECK GIRDERS AND													
BOTTOM SHELL.													
GET.		GEC.		GEZ.		GEZ.		GEZ.		GEZ.		GEZ.	
A		B		C		D		E		F		G	
231353													