

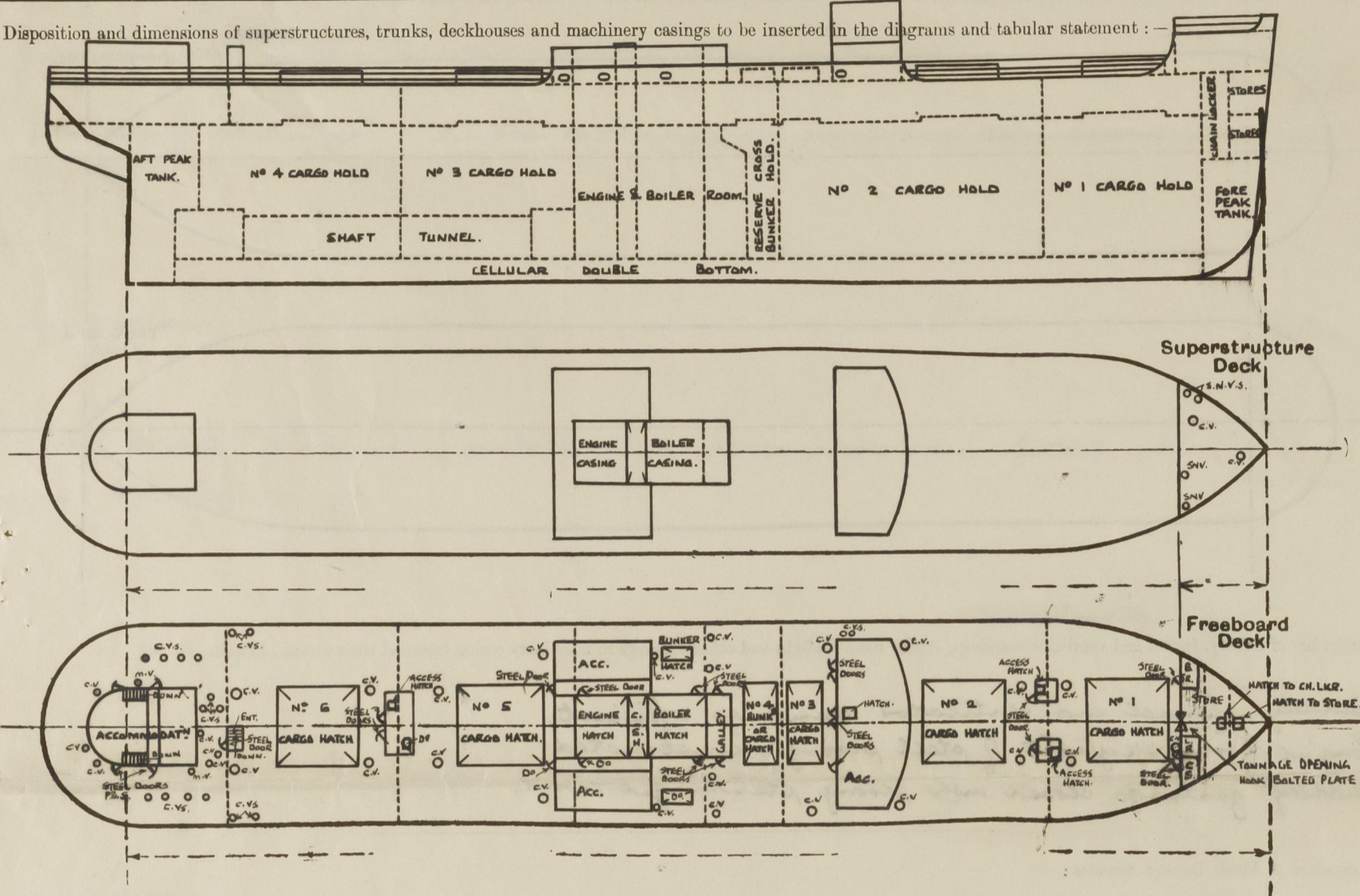
Lloyd's Register of Shipping.  
SURVEYS FOR FREEBOARD.  
(CONDITIONS OF ASSIGNMENT.)

Index No. \_\_\_\_\_  
(For London Office only).

JB. 123.

Ship's Name "EMPIRE BAXTER." Port of Survey BARROW  
Official Number 167740 / Surveyor's Signature S. Bowman.  
Nationality and Port of Registry BRITISH - BARROW. Date of Survey WHILE BUILDING.

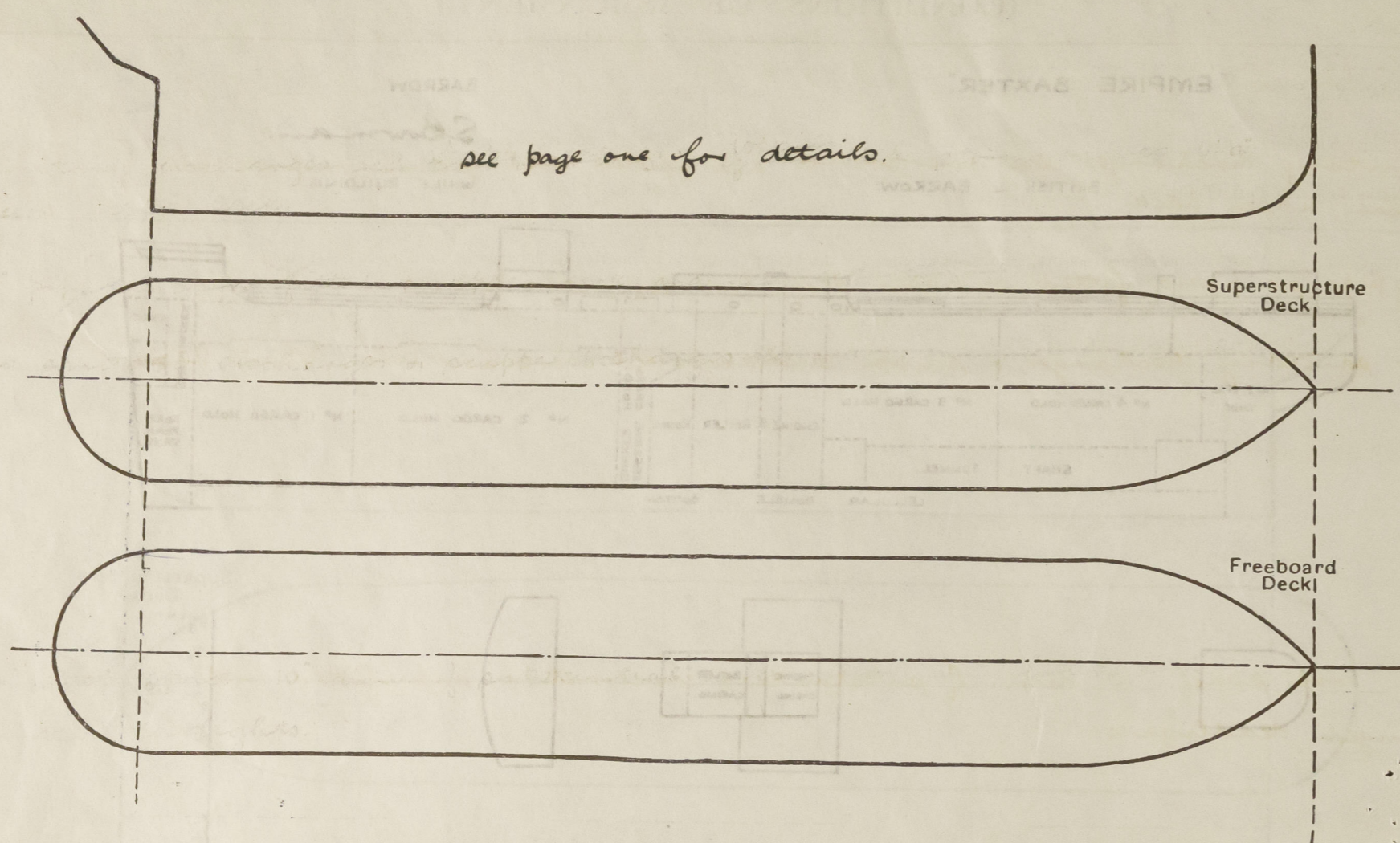
Disposition and dimensions of superstructures, trunks, deckhouses and machinery casings to be inserted in the diagrams and tabular statement: -



Particulars of Superstructures, Trunks, Casings, Deckhouses.								
	Coaming	Plating	Stiffeners	Spacing	End Attachments of Stiffeners	Size of Openings	Height of Sills	Height of Casings
Poop Bulkhead ... ..	✓							
Raised Quarter Deck Bulkhead ...	✓							
Bridge, After Bulkhead ... ..	✓							
Bridge, Forward Bulkhead ... ..	✓							
Forecastle Bulkhead ... ..	30"	30"	3' x 3' x .35"	30'	1 R. T. & BTM. THRO' STRINGER BAR	1 @ 5'-0" x 4'-1" 3 @ 5'-0" x 2'-3"	18"	7'-6" ✓
Trunk, Aft ... ..	✓							
Trunk, Forward ... ..	✓							
Exposed Machinery Casings on Freeboard or Raised Quarter Decks ...	34"	30"	3½" x 3' x .40"	31"	BKTS. AT TOP, CONT. AT BOTTOM.	2 @ 5'-0" x 2'-1"	18"	7'-6" ✓
Exposed Machinery Casings on Superstructure Decks ...	✓							
Machinery Casings within DECKHOUSE not fitted with Class I Closing Appliances ... ..	34"	26"	3' x 3' x .30"	27"	BKTS. AT TOP	2 @ 5'-0" x 2'-3"	18"	7'-6" ✓
Deckhouses on Flush Deck Ships ...	✓							
Particulars of Closing Appliances (state if capable of being manipulated from both sides).								
Poop Bulkhead ... ..	✓							
Raised Quarter Deck Bulkhead ...	✓							
Bridge, After Bulkhead ... ..	✓							
Bridge, Forward Bulkhead ... ..	✓							
Forecastle Bulkhead ... ..	✓							
Exposed Machinery Casings on Freeboard or Raised Quarter Decks ...	✓							
Exposed Machinery Casings on Superstructure Decks ...	✓							
Machinery Casings within DECKHOUSE not fitted with Class I Closing Appliances ... ..	✓							
Deckhouses on Flush Deck Ships ...	✓							

### PARTICULARS OF PROTECTION TO OPENINGS, ETC.

The following diagrams should be used to indicate the positions of cargo and coaling hatchways, gangway, cargo and coaling ports, ventilators, companionways, etc., which would affect the seaworthiness of the ship:—



Particulars of fiddle, funnel and ventilator coamings, engine room skylight and other openings in machinery casing tops and their means of closing :

Sidley, funnel and ventilator coverings efficient.  
Engine room skylight of steel strongly constructed.  
Sidley gratings closed with strong steel hinged covers.

Particulars of Flush Bunker Scuttles:—

none.

Particulars of Companionways :—

Entrance to accommodation aft, from deckhouse fitted with steel doors 5'-0" x 2'-0" with coaming 23" above steel deck, doors manipulated both sides. ✓  
Hatch to store amidships inside saloon house having steel doors with 18" coaming. m.B. Sides ✓  
Companion to defensive crew accomdn aft of strong construction with steel doors 4'-6" x 2'-0" - coaming 23" doors manipulated both sides. ✓

Particulars of Ventilators in exposed positions on freeboard and superstructure decks :—

No.	Dim.	Position	Spaced	Criming
2	18"	on Deck Deck	to Hold	36"x40"
4	"	between nos. 1 and 2 Hatchco	" "	" "
2	"	forward of Palow House.	" "	" "
2	"	amidships	" "	" "
2	"	aboard nos. 3 Hatch	" "	" "
4	"	between nos. 5 & 6 Hatchco	" "	" "
1	"	aft of no. 6 Hatch. p.	" "	" "
1	"	aft of no. 6 Hatch p.	" "	" "
12	8"	Deck Deck.	Steel aft	36"x32"
1	10"	" " "	to main aft	36 1/2"x35"
2	6"	" " "	to Transverse bulk	" "
2	6"	" " "	to Steering Gear	36"x30"
1	6"	" " "	to Gun. Hoist Spad	" "
2	6"	amidships.	Bulkhead clearing	" "
1	10"	Deck Deck.	to Stern Deck	36"x32"
2	10"	aboard casing	to Twin Deck	36"x32"
1	6"	at Palow House	Cabin door	36"x30"
2	12"	at 1st "	Relief Spad	36"x38"
2	12"	aboard casing	at Bulkhead	36"x34"
5	4"	aft end of Deck	(H) Bulkhead	38 1/2"x32"
1	6"	" " "	" "	" "

Forecastle Deck.

4 - 6" diam. S.N. Vents to stores.

Blackboard desk

2 - 6" diam m. Vents aft to spaces below. ✓

All ventilators built in accordance with the Society's Rules and provided with wood plugs and canvas covers.

Particulars of Air Pipes in exposed positions on freeboard, raised quarter, or superstructure decks:—

Forecastle Deck.

1 - 3" diam. screwplate top air pipe to Fuel Peak Tank - 18" high.  
1 - 4" " " " " " " Double Bottom - 18" "

upper Deck.

8 - 3" diam. screwplate top air pipe to Double Bottom - 30" high.

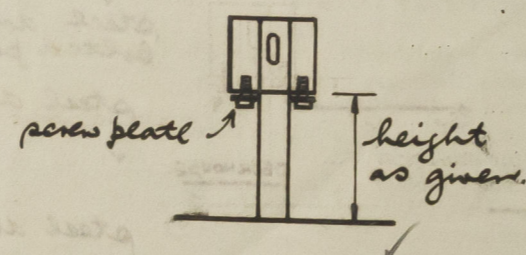
4-25 - - - - - 30"

2-35 - - - - - 30 -

6-4-	-	-	-	-	-	-	-
7-25"	-	-	-	-	-	-	-

2-22	-	-	-	-	Cofferdam	30	-
2-3	-	-	-	-	at back	2	-

• afr plate bark - 30 -



Particulars of Gangway Cargo and Coaling Ports :—

none.

Particulars of Scuppers and Sanitary Discharge Pipes :—

sanitary discharges led overboard and fitted with storm valves 6'-0" below upper deck. ✓

3" pipe scuppers fitted on upper deck and led overboard.

no sanitary discharges or scupper discharges led overboard below second Deck.

Particulars of Side Scuttles :—

In Poop Space. 10" diam. of substantial construction and fitted with hinged deadlights. ✓

Vertical distance of Sill of lowest Side Scuttle above top of keel 36'-0"

Particulars of Guard Rails :—

2" x 6" Deck. 2 rails and stanchions 3'-3" high - stanchions about 5'-0" apart. ✓  
Upper Deck. 3 rails and stanchions 3'-6" high - stanchions about 5'-0" apart except in way of  
deckhouses amidships where steel bulwark (3'-6" high) substantially supported, is fitted. ✓  
4 freeing ports 3'-0" x 1'-6" (fitted with steel rod) are cut in each side of vessel. ✓

Particulars of Gangways, Lifelines, etc. :—

Provision has been made for the fitting of lifelines to all requirements.

Particulars of Freeing Arrangements.						
	Length of Bulwark	Height of Bulwark	Size of Freeing Ports	Number each side	Area each side	Rule area each side
After Well ... ..	✓					
Forward Well ... ..	✓					


State position of each freeing port	...	...	( After Well :—	✓
-------------------------------------	-----	-----	-----------------	---

(F. and A. position and height above deck edge) } Forward Well :— ✓

State whether the freeing ports are fitted with shutters, bars, or rails, and give particulars of such:— ✓

Additional area where sheer is less than standard. ✓

# PARTICULARS OF PROTECTION TO OPENINGS, ETC.

HATCHWAYS ON FREEBOARD AND SUPERSTRUCTURE DECKS.											
Description of Hatchway	...	...	no. 1	no. 2, 5 + 6	no 3	no 4	Small Hatches.				
Dimensions of Hatchway	...	...	31'-6" x 20'	31' x 20'	12'-11" x 20'	10'-4" x 20'					
COAMINGS	{	Height above Deck	...	30"	30"	30"	30"	<i>under Forecastle.</i> <i>To chain locker. 2'-0" x 2'-6" (9' x 3' x .40 S.A. Coaming.</i> <i>To store 4'-0" x 3'-0" cleats 24" apart</i> <i>2 1/2" wood covers</i> <i>one tarpaulin</i>			
		Thickness	{ Sides	...	.44"	.44"	.44"				.44"
		Ends	...	.44"	.44"	.44"	.44"				
		Stiffeners	...	7 x 3 x 3/8 BA	8 x 3 1/2 x 7/16 BA	at sides	8 x 3 x 3/8 BA				at ends
		Brackets, Stays	...	3	3	1	1				
HATCH BEAMS	{	Number	...	5	5	1	1	<i>Coal Hatch (p. &amp; s.) 15'-6" x 5'-0" on freeboard</i> <i>Coaming 30" x .44", stiffened by 3" x 3" x .40"</i> <i>angles attached to beams.</i> <i>2 1/2 wood covers</i> <i>cleats - 24" apart</i> <i>2 tarpaulins.</i>			
		Spacing	...	5'-3"	5'-2"	6'-5 1/2"	5'-2"				
		Scantling and Sketch	...	18 1/2" x .36"	16 3/4" x .36"	19 1/2" x .38"	16 3/4" x .36"				
			Double top and bottom angles	...	5" x 3" x .38"	...	...				
			Bearing Surface	...	3"	3"	3"				3"
FORE AND AFTERS	{	Number	...					<i>Coal shoot Hatch on Casing Top.</i> <i>15'-2" x 18'-0"</i> <i>Coaming 15" x .40"</i> <i>2 1/2 wood covers</i> <i>cleats - 24" apart</i> <i>2 tarpaulins.</i>			
		Spacing	...								
		Unsupported Lengths	...								
		Scantling* and Sketch	...	← none →							
		Bearing Surface	...								
HATCH COVERS	{	Material	...	W.P.	W.P.	W.P.	W.P.				
		Thickness	...	2 1/2"	2 1/2"	3"	2 1/2"				
		How fitted	...	F. + A.	F. + A.	F. + A.	F. + A.				
		Bearing Surface	...	3"	3"	3"	3"				
Spacing of Cleats	...	(maximum)	24"	24"	24"	24"					
Number of Tarpaulins	...	2	2	2	2						
<p>*Are wood fore and afters steel shod at all bearing surfaces? <i>yes</i></p> <p>Are battens and wedges efficient and in good condition? <i>yes</i></p> <p>Are tarpaulins in good condition and in accordance with rule requirements? <i>yes</i></p> <p>Are lashings provided in accordance with rule requirements? <i>yes.</i></p>											

Particulars of any special features:—

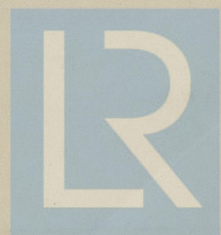
*six small skylights (to after accommodation etc.) on weather deck, strongly constructed of steel with hinged steel flaps efficiently secured.*

*main mast house of steel, strongly constructed, with 2 steel doors (m.b.s.) size 4'-6" x 2'-0" coaming 24" enclosing 2 escape hatches to holds size 2'-6" x 2'-0" coaming 9" x 3" x .40 S.A. with hinged steel covers with 1 toggle.*

*one small house (p. & s. of forward mast) of steel, strongly constructed with steel door (m.b.s.) 4'-6" x 2'-0" coaming 24" enclosing escape hatches to holds size 2'-6" x 2'-0" coaming 8" x 3/8" (welded) with steel hinged covers with 2 toggles.*

Endorsement at first survey and at surveys for renewal of Certificate:—

The fittings and appliances are in accordance with the particulars shown on this form (or as now modified) and are in good condition.



© 2021

Lloyd's Register Foundation