



Lloyd's Register of Shipping.

SURVEYS FOR FREEBOARD.

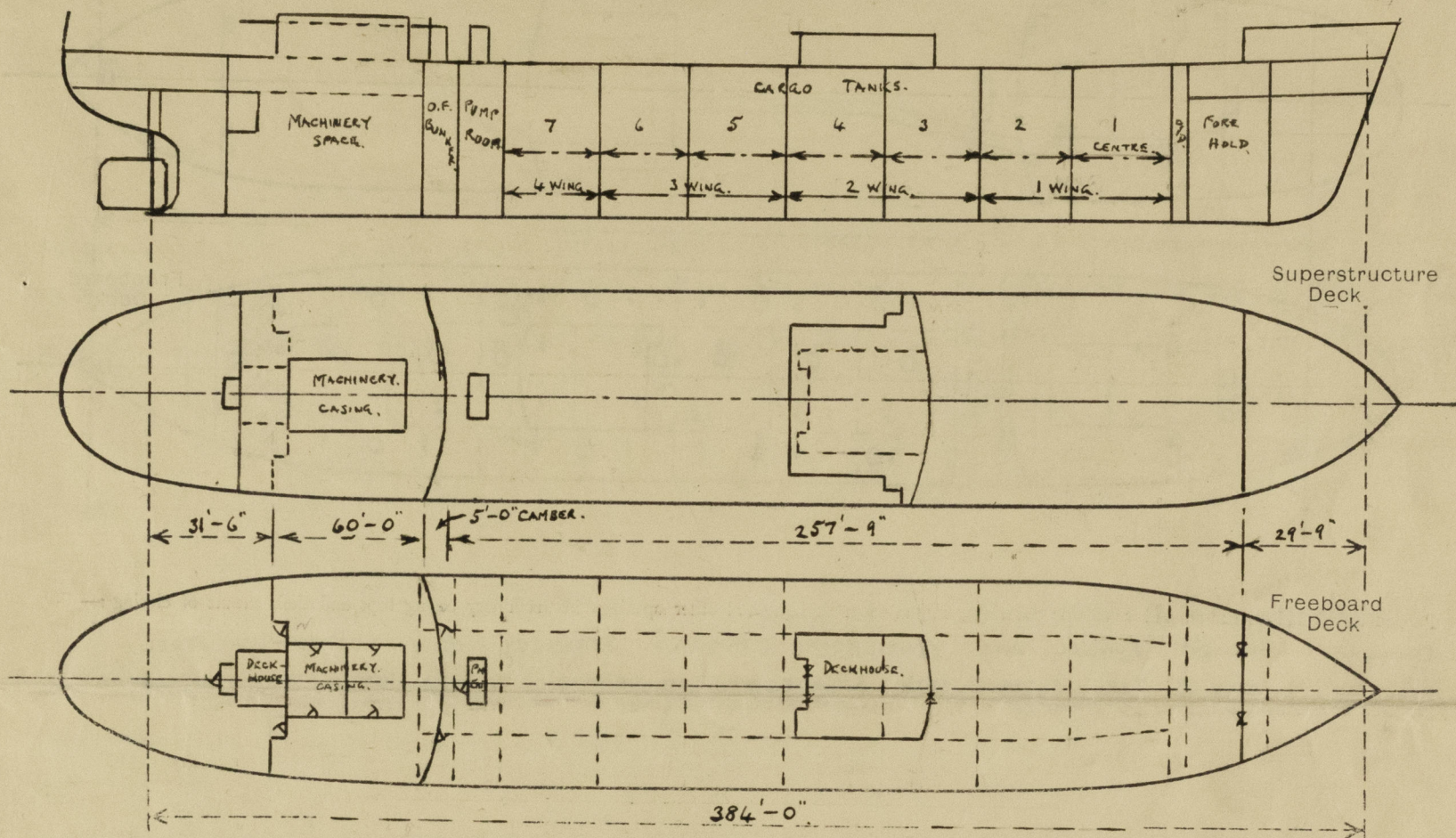
(CONDITIONS OF ASSIGNMENT.)

12 DEC 1952

441840

Index No.
(For London Office only.)Ship's Name M.V. GLESSULAPort of Survey NEWCASTLE - ON - TYNEOfficial Number -Surveyor's Signature James. W. N. KeayNationality and Port of Registry DUTCH WILLEMSTADDate of Survey December 1952

Disposition and dimensions of superstructures, trunks, deckhouses and machinery casings to be inserted in the diagrams and tabular statement :-



Particulars of Superstructures, Trunks, Casings, Deckhouses.

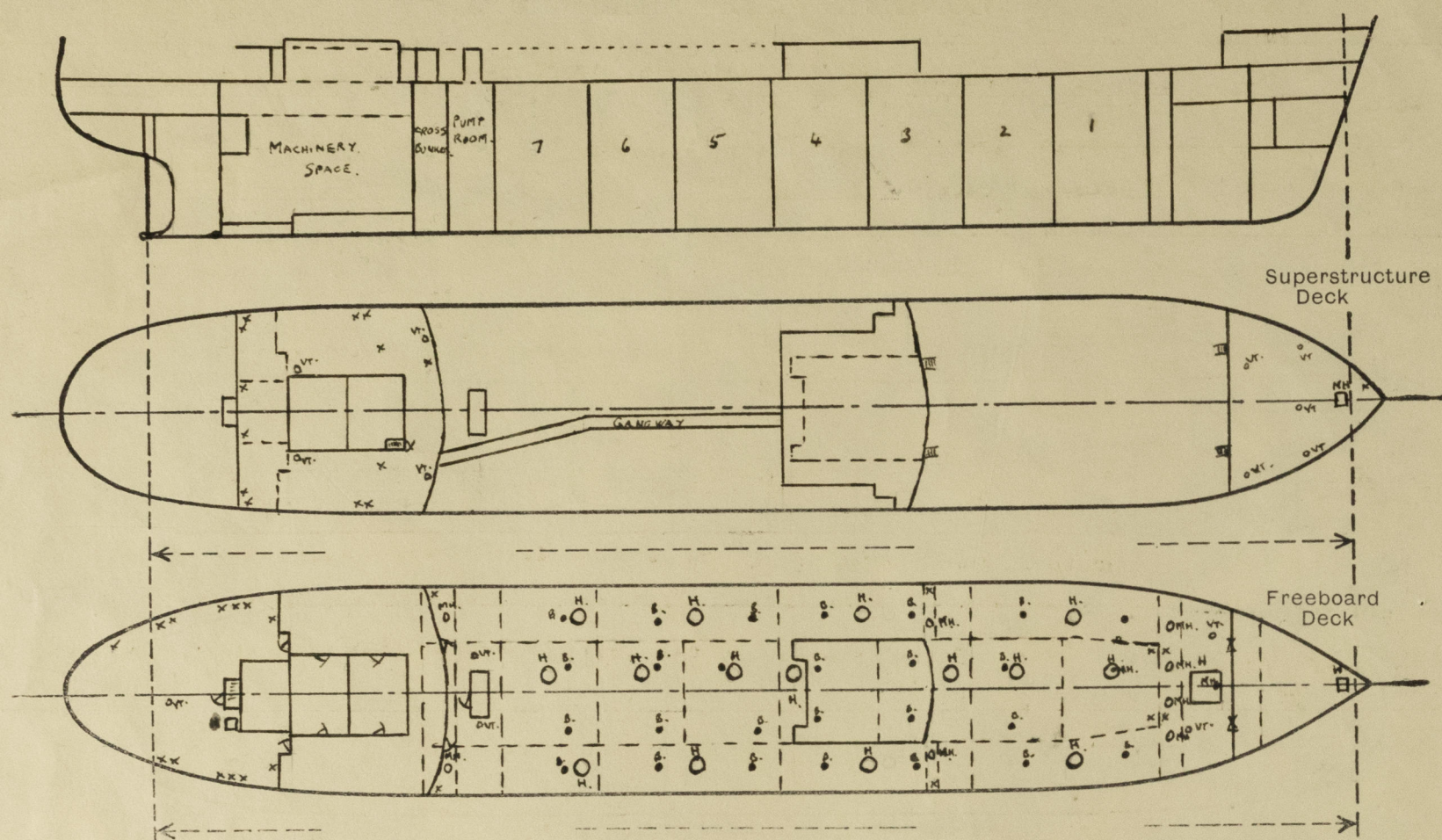
	Coaming	Plating	Stiffeners	Spacing	End Attachments of Stiffeners	Size of Openings	Height of Sills	Height of Casings
Poop Bulkhead ...	-	-	-	-	-	-	-	-
Raised Quarter Deck Bulkhead ...	-	-	-	-	-	-	-	-
Bridge, After Bulkhead35" ✓	.35" ✓	6" x 3" x .40 BA.	2'-9" ✓	WELDED AT TOP AND BOTTOM.	2 @ 4'-10" x 2'-0"	25" ✓	8'-0" ✓
Bridge, Forward Bulkhead44" ✓	.44" ✓	9" x 3 1/2" x .45 BA.	2'-7 1/2" ✓	WELDED AT TOP AND BOTTOM.	2 @ 4'-6" x 2'-3"	24" ✓	8'-0" ✓
Forecastle Bulkhead30" ✓	.30" ✓	6" x 3" x .35 BA.	2'-6" ✓	WELDED AT TOP AND BOTTOM. SKT AT DK. GIRDER.	2 @ 4'-0" x 3'-0"	24" ✓	7'-6" ✓
Trunk, Aft ...	-	-	-	-	-	-	-	-
Trunk, Forward ...	-	-	-	-	-	-	-	-
Exposed Machinery Casings on Freeboard or Raised Quarter Decks ...	-	-	-	-	-	-	-	-
Exposed Machinery Casings on Superstructure Decks ...	-	.30" ✓	3 1/2" x 3" x .28 BA.	3'-4" ✓	SKTS. AT TOP STIFFS. EXTENDED BELOW.	-	-	1'-9" ✓
Machinery Casings within Superstructures not fitted with Class I Closing Appliances35" ✓	.28" ✓	DITTO.	DITTO.	-	4 @ 4'-11" x 2'-0"	12" ✓	8'-0" ✓
Deckhouses on Flush Deck Ships ...	-	-	-	-	-	-	-	-

Particulars of Closing Appliances (state if capable of being manipulated from both sides).

Poop Bulkhead ...	-
Raised Quarter Deck Bulkhead ...	-
Bridge, After Bulkhead ...	HINGED WOOD DOORS, OPERATED FROM BOTH SIDES. ✓
Bridge, Forward Bulkhead ...	HINGED W.T. DOORS, OPERATED FROM BOTH SIDES. ✓
Forecastle Bulkhead ...	PORTABLE STEEL PLATES, SECURED BY HOOK BOLTS. ✓
Exposed Machinery Casings on Freeboard or Raised Quarter Decks ...	-
Exposed Machinery Casings on Superstructure Decks ...	NO OPENINGS. ✓
Machinery Casings within Superstructures not fitted with Class I Closing Appliances ...	HINGED STEEL DOORS, OPERATED FROM BOTH SIDES. ✓
Deckhouses on Flush Deck Ships ...	-

PARTICULARS OF PROTECTION TO OPENINGS, ETC.

The following diagrams should be used to indicate the positions of cargo and coaling hatchways, gangway, cargo and coaling ports, ventilators, companionways, etc., which would affect the seaworthiness of the ship :-



Particulars of fiddle, funnel and ventilator coamings, engine room skylight and other openings in machinery casing tops and their means of closing :-
ENGINE ROOM SKYLIGHT, FUNNEL AND VENTILATOR COAMINGS STRONGLY CONSTRUCTED OF STEEL.
OPENINGS IN CASING TOP FITTED WITH STRONGLY CONSTRUCTED HINGED STEEL STORM COVERS.

Particulars of Flush Bunker Scuttles :- NONE.

Particulars of Companionways :- PUMP ROOM ENTRANCE PLATING .35" STIFFS. 4" x 3" x .38" FRONT & SIDES 3' x 3' x .40" AFT. ENDS WELDED OR BRACKETED. DOOR OPENING 4'-8" x 3'-0", 24" SILL. FITTED WITH W.T. DOOR OPERATED FROM BOTH SIDES. 2 STRONGLY CONSTRUCTED STEEL SKYLIGHTS, FITTED ON TOP. COMPANIONWAY AFT (FREEBOARD) STRONGLY CONSTRUCTED OF STEEL. DOOR OPENING 5'-0" x 2'-2", 20" SILL. FITTED WITH WOOD DOOR, OPERATED FROM BOTH SIDES. COMPANIONWAY (BRIDGE DECK) STRONGLY CONSTRUCTED OF STEEL. DOOR OPENING 5'-0" x 2'-0", 18" SILL. FITTED WITH WOOD DOOR, OPERATED FROM BOTH SIDES.

Particulars of Ventilators in exposed positions on freeboard and superstructure decks :-

FREEBOARD DK.	2	VENTS.	10" DIAM.	36" x 32"	HOLD.
	2	"	21" DIAM.	10'-6" x 40"	PUMP ROOM (EFFICIENTLY STAYED)
	1	"	8" DIAM.	36" x 30"	STEERING GEAR.
FO'CLE DK.	2	"	10" DIAM.	36" x 32"	HOLD
	1	"	10" DIAM.	36" x 32"	FORE PEAK.
	2	"	8" DIAM.	36" x 30"	FO'CLE.
BRIDGE DK.	2	"	12" DIAM.	30" x 32"	ACCOMMODATION. (MOSH ROOM).
	2	"	13" DIAM.	30" x 36"	"

VENTILATORS CLOSED BY WOOD OR STEEL PLUGS AND CANVAS COVERS.

Particulars of Air Pipes in exposed positions on freeboard, raised quarter, or superstructure decks :-

FREEBOARD DECK	2	AIR PIPES	8" DIAM.	6-5", 2-4", 2-3", 7-2 1/2", 2-2"	SWAN NECK 36" HIGH.
FO'CLE DECK	1	"	6" DIAM.	"	SWAN NECK 36" HIGH.
BRIDGE DECK	7	"	5" DIAM.	"	20"
	2	"	4 1/2" DIAM.	"	23"
	4	"	2 1/2" DIAM.	"	18"

AIR PIPES CLOSED BY WOOD PLUGS OR CANVAS COVERS WHERE TO OIL FUEL TANKS OR COFFERDAMS AND GAUZE FITTED.

Particulars of Gangway Cargo and Coaling Ports :- NONE.

Glossula.

Particulars of Scuppers and Sanitary Discharge Pipes :- SCUPPERS AND SANITARY DISCHARGES FROM SPACES ABOVE FREEBOARD DECK FITTED WITH N.R. VALVES AT SHIPS SIDE.

2 1/2" DIAM. SCUPPERS FROM STEERING GEAR AND ALLEYWAYS ART LED TO MACHINERY SPACE AND FITTED WITH SELF CLOSING COCKS.

6 SLOTS 4" x 2" CUT IN STRINGER ANGLE PORT AND STARBD. FREEBOARD DECK.

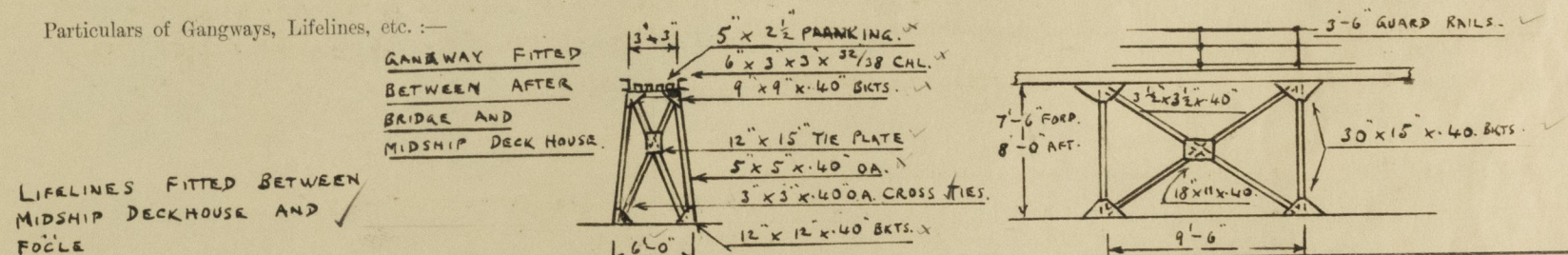
Particulars of Side Scuttles :- 10" DIAM. BELOW UPPER DECK, TO STEERING GEAR SPACE, ALLEYWAYS AND ENGINEERS WORKSHOP. BRASS FRAMES WITH STEEL DEADLIGHTS PERMANENTLY ATTACHED.

12" DIAM. ABOVE UPPER DECK, BRASS FRAMES WITH STEEL DEADLIGHTS PERMANENTLY ATTACHED.

Vertical distance of Sill of lowest Side Scuttle above top of keel 25'-9" AT 20'-0" FORD OF A.P.

Particulars of Guard Rails :- STRONGLY CONSTRUCTED STEEL BULWARKS, EFFICIENTLY STAYED, FITTED OF FREEBOARD DECK 16'-0" ABAFT FO'CLE AND 7'-0" FORD OF AFTER BRIDGE. ELSEWHERE ON FREEBOARD AND SUPERSTRUCTURE DECKS, FITTED WITH OPEN RAILS AND STANCHIONS. 3'-6" HIGH STANCHIONS, 3 RAILS AND EFFICIENTLY STAYED.

Particulars of Gangways, Lifelines, etc. :-



LIFELINES FITTED BETWEEN MIDSHIP DECKHOUSE AND FO'CLE

Particulars of Freeing Arrangements.

	Length of Bulwark	Height of Bulwark	Size of Freeing Ports	Number each side	Area each side	Rule area each side
After Well ...						
Forward Well ...						

State position of each freeing port ... { After Well :-
(P. and A. position and height above deck edge) { Forward Well :-

State whether the freeing ports are fitted with shutters, bars, or rails, and give particulars of such :-

Additional area where sheer is less than standard.

PARTICULARS OF PROTECTION TO OPENINGS, ETC.

HATCHWAYS ON FREEBOARD AND SUPERSTRUCTURE DECKS.										WITHIN	FO'CLE
FREEBOARD DECK EXPOSED.										FO'CLE	DECK.
Description of Hatchway			CARGO TANKS NOT CENTRE	DRY.	FORWARD	SAN. DISCHARGE	OIL FUEL	STEERING	FORE PEAK	FO'CLE	
			14 OFF.	CARGO TANK. 1 OFF.	COFFER DAM. 4 OFF.	COFFER DAMS 2 OFF.	BUNKERS 2 OFF.	GEAR 1 OFF.	STORE 1 OFF.	SPACE. 1 OFF.	
Dimensions of Hatchway			4'-0" DIAM.	4'-0" DIAM.	8'-0" X 8'-0"	2'-0" X 1'-7"	1'-7" X 1'-1"	2'-0" X 1'-7"	2'-3" X 2'-3"	2'-0" X 1'-10"	1'-9" X 1'-3"
COAMINGS	Height above Deck	...	12"	12"	2'-6"	6" X 3" X 38" O.A.	9" X 3 1/2" X 55" O.A.	6" X 3 1/2" X 38" O.A.	6" X 3 1/2" X 38" O.A.	6" X 40" FLAT WELDED	6" X 4" X 38" O.A.
	Thickness	{ Sides	.44" SIDE TANKS	.44"	.44"	INVERTED	INVERTED	INVERTED	INVERTED	INVERTED	INVERTED
		{ Ends			.44"						
	Stiffeners76" CENTRE TANKS.	-	2" X 6" FLAT AT UPPER EDGE. SIDES 2" X 4" FLANGED 2 1/2"	-	-	-	-	-	-
	Brackets	...		-		-	-	-	-	-	-
HATCH BEAMS	Number	...	-	-	-	-	-	-	-	-	-
	Spacing	...	-	-	-	-	-	-	-	-	-
	Scantling and Sketch	...	-	-	-	-	-	-	-	-	-
FORE AND AFTERS	Number	...	-	-	-	-	-	-	-	-	-
	Spacing	...	-	-	-	-	-	-	-	-	-
	Unsupported Lengths	...	-	-	-	-	-	-	-	-	-
HATCH COVERS	Scantling* and Sketch	...	-	-	-	-	-	-	-	-	-
	Bearing Surface	...	-	-	-	-	-	-	-	-	-
HATCH COVERS	Material	...	STEEL O.T.	STEEL W.T.	HINGED STEEL W.T.	STEEL O.T.	STEEL O.T.	STEEL O.T.	STEEL W.T.	STEEL W.T.	STEEL W.T.
	Thickness40"	.40"	.47" WITH 2 RIVETS TOP	.40"	.50"	.38"	.40"	.40"	.40"
	How fitted	...	HINGED.	RIVETED TOP	7" X 3" X 35" BA STIFFS.	PORTABLE	PORTABLE	PORTABLE	HINGED.	HINGED.	PORTABLE
	Bearing Surface	...	-	COVER SECURED 10 TACKLES. BY 5/8 BOLTS	COVER SECURED 10 TACKLES. BY 5/8 BOLTS	SECURED BY	SECURED BY	SECURED BY	-	-	SECURED BY.
Spacing of Cleats			8 TACKLES.	COVER SECURED 10 TACKLES. BY 5/8 BOLTS	3 1/4" BOLTS 3 1/2" APART.	3 1/4" BOLTS 3" APART.	5/8 BOLTS 3 1/2" APART.	6 TACKLES.	8 TACKLES.	3 1/4" BOLTS 3 1/2" APART.	
Number of Tarpaulins			-	SPACED 3" APART.	2 1/2" X 15" HINGED COVER 40" X 4" TACKLES.						
*Are wood fore and afters steel shod at all bearing surfaces?											
Are battens and wedges efficient and in good condition?											
Are tarpaulins in good condition and in accordance with rule requirements?											
Are lashings provided in accordance with rule requirements?											

Particulars of any special features:—

BUTTER WORTH OPENINGS 12" DIAM. CUT IN FREEBOARD DECK IN WAY OF CARGO TANKS,

1 @ No. 4 WING TANK (P. & S).

2 @ Nos. 2 - 7 CENTRE TANKS

Nos. 1 - 3 WING TANKS (P. & S.)

CLOSED BY STEEL PLATES ATTACHED BY STUDS.

POSITION OF OPENINGS SHOWN IN SKETCH / THUS

8



© 2020

Lloyd's Register Foundation