

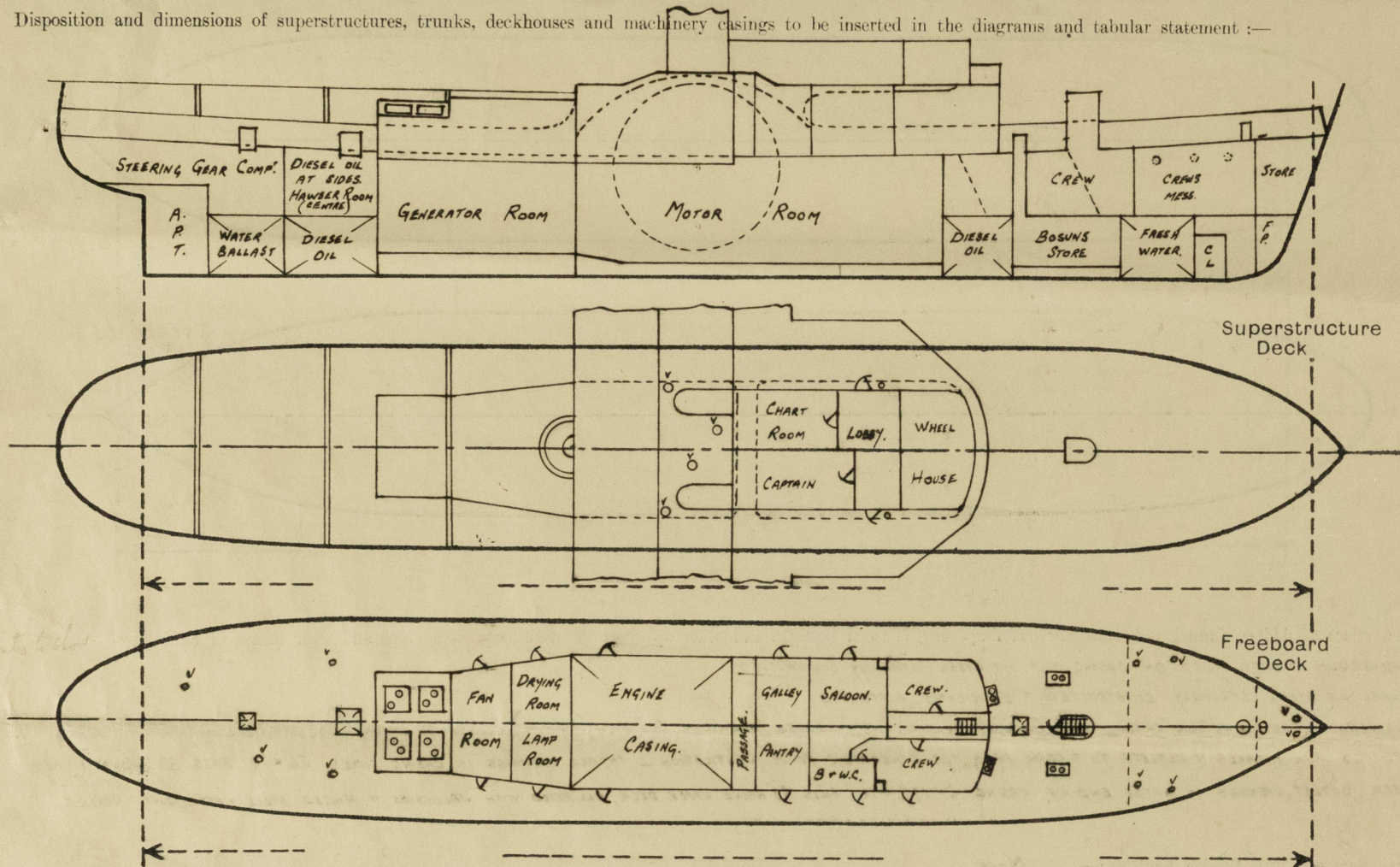
Lloyd's Register of Shipping.

Index No. _____
(For London Office only.)

SURVEYS FOR FREEBOARD. (CONDITIONS OF ASSIGNMENT.)

Ship's Name DEXTEROUS Port of Survey GLASGOW
Official Number _____ Surveyor's Signature Geo. Cockburn
Nationality and Port of Registry BRITISH Date of Survey WHILE BUILDING

Disposition and dimensions of superstructures, trunks, deckhouses and machinery casings to be inserted in the diagrams and tabular statement:—



Particulars of Superstructures, Trunks, Casings, Deckhouses.

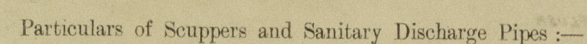
	Coaming	Plating	Stiffeners	Spacing	End Attachments of Stiffeners	Size of Openings	Height of Sills	Height of Casings
Poop Bulkhead ...	-	-	-	-	-	-	-	-
Raised Quarter Deck Bulkhead ...	-	-	-	-	-	-	-	-
Bridge, After Bulkhead ...	-	-	-	-	-	-	-	-
Bridge, Forward Bulkhead ...	-	-	-	-	-	-	-	-
Forecastle Bulkhead ...	-	-	-	-	-	-	-	-
Trunk, Aft ...	-	-	-	-	-	-	-	-
Trunk, Forward ...	-	-	-	-	-	-	-	-
Exposed Machinery Casings on Freeboard or Raised Quarter Decks ...	3 x 32	29	4 x 2 1/2 x 32 O.A.	21"	BRAKETS AT TOP	20 4/3 x 3' 0"	24"	5' 6"
Exposed Machinery Casings on Superstructure Decks ...	-	-	-	-	-	40 3' 0" x 2' 2"	-	7' 6"
Machinery Casings within Superstructures not fitted with Class I Closing Appliances ...	-	-	-	-	-	-	-	-
Deckhouses on Flush Deck Ships ...	6 x 31	24	4 x 2 1/2 x 32 O.A.	21"	BRAKETS AT TOP	10 4/3 x 1' 9"	24"	7' 6"
						40 4/3 x 2' 2"		

Particulars of Closing Appliances (state if capable of being manipulated from both sides).

Poop Bulkhead ...	
Raised Quarter Deck Bulkhead ...	
Bridge, After Bulkhead ...	
Bridge, Forward Bulkhead ...	
Forecastle Bulkhead ...	
Exposed Machinery Casings on Freeboard or Raised Quarter Decks ...	HINGED STEEL WATERTIGHT DOORS, OPERATED FROM BOTH SIDES.
Exposed Machinery Casings on Superstructure Decks ...	
Machinery Casings within Superstructures not fitted with Class I Closing Appliances ...	
Deckhouses on Flush Deck Ships ...	HINGED STEEL WATERTIGHT DOORS, OPERATED FROM BOTH SIDES.

Lexterous

Particulars of Gangway Cargo and Coaling Ports :— *NONE*



SANITARY DISCHARGES FROM SPACES ON & ABOVE UPPER DECK 2" TO 4" DIA., LED OVERBOARD THROUGH SHIP'S SIDES WITH STRONG BRASS STORM VALVES ON SHELL

IN SHIPS SIDES IN WAY OF CREW'S MESSROOM FORWARD, 6 IN NUMBER, 10" DIA., NON-OPENING SIDE SCUTTLES TO B.S.S. N° 3024-1947 TABLE 3, STRONGLY CONSTRUCTED OF BRASS, & FITTED WITH STRONG HINGED BRASS DEADLIGHTS.

ENGINE ROOM VENTILATORS ON CASING TOP OF STEEL STRONGLY CONSTRUCTED.

FUNNEL OF STEEL STRONGLY CONSTRUCTED & EFFICIENTLY SUPPORTED.

ENGINEER ROOM SKYLIGHT ON CASING TOP, STRONGLY CONSTRUCTED OF STEEL, COARINGS 24" HIGH (MINIMUM), CLOSED BY STRONG RINGED STEEL WATERTIGHT FLAPS. OPENINGS FOR INTAKES & OUTLETS TO & FROM FANS FOR GENERATOR ROOM VENTILATION - INTAKE OPENINGS IN CASING SIDES 26" x 19", SILLS 33" ABOVE UPPER DECK, OUTLET OPENINGS IN AFTER END OF CASING 20 1/2" x 14", SILLS 31" ABOVE UPPER DECK, ALL FITTED WITH JALOUSIES, & HINGED STEEL WATERTIGHT COVERS.

Particulars of Flush Bunker Scuttles:— *NONE.*

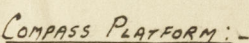
Particulars of Companionways :—

ONE ON UPPER DECK FORWARD, GIVING ACCESS TO CREWS' QUARTERS, STRONGLY BUILT OF STEEL, OPENING 4'-0" X 2'-0", SILL 2", CLOSED BY A STRONG HINGED STEEL WATERTIGHT DOOR, OPERATED FROM BOTH SIDES.

Particulars of Ventilators in exposed positions on freeboard and superstructure decks :—

UPPER DECK:-

2-9" DIA. PATENT GASTIGHT VENTILATORS TO STEERING GEAR SPACE	2-9" HIGH x .30
2-5" " " " " HAWSER ROOM.	2-9" " x .25
2-9" " " " " CREWS MESSROOM	2-9" " x .30
2-8" " " " " " "	2-9" " x .30
2-4" DIA. SCREW-DOWN MUSHROOM " " FORWARD STORE.	2-6" " x .25



1-11" DIA. PATENT GASTIGHT VENTILATOR TO SUPPLY FAN CASING. 2'-0" HIGH x 30"

TRUNK VENTILATION:- A NUMBER OF SMALL VENTILATOR OPENINGS FITTED IN UPPER PART OF DECKHOUSE SIDES, TRUNKED TO CREW SPACES, ETC., FITTED WITH HINGED STEEL W.T. COVERS FOR CLOSING.

Particulars of Air Pipes in exposed positions on freeboard, raised quarter, or superstructure decks :—

UPPER DECK:-

2 - 2 1/2"	DIA. TO AFTER PEAK TANK.	2' 6" HIGH.
2 - 2 1/2"	" " BALLAST "	2' 6" "
4 - 2"	" " DIESEL OIL DEEP TANKS (WINGS)	2' 6" "
1 - 3"	" " " (CENTRE)	2' 6" "
8 - 2"	" " OIL FUEL D.B. TANKS.	2' 6" "
4 - 2"	" " FORWARD DIESEL OIL DEEP TANKS.	2' 6" "
2 - 2"	" " " FRESH WATER "	2' 6" "
1 - 2 1/2"	" " FORE PEAK TANK	2' 6" "

NOTE:- AIR PIPES FITTED
UNDER BULWARKS.
SNIFFING HOLES DRILL
AT TOP OF BEND.

AIR PIPES TO OIL TANKS FITTED WITH SAFETY BANNETS (WIRE GAUZE) & CANVAS COVERS PROVIDED FOR CLOSING. OTHER AIR PIPES FITTED WITH WOOD PLUGS FOR CLOSING.

Particulars of Guard Rails :—

STEEL BULWARKS FITTED FORWARD & AFT OF PADDLE BOXES 3'-0" HIGH, STRONGLY CONSTRUCTED & EFFICIENTLY STAYED.

GUARD STANCHIONS & RAILS FITTED AT AFTER END OF BRIDGE DECK & AT SIDES OF PADDLE BOXES, 2 OR 3 RODS, STANCHIONS SPACED ABOUT 5'-0" APART.

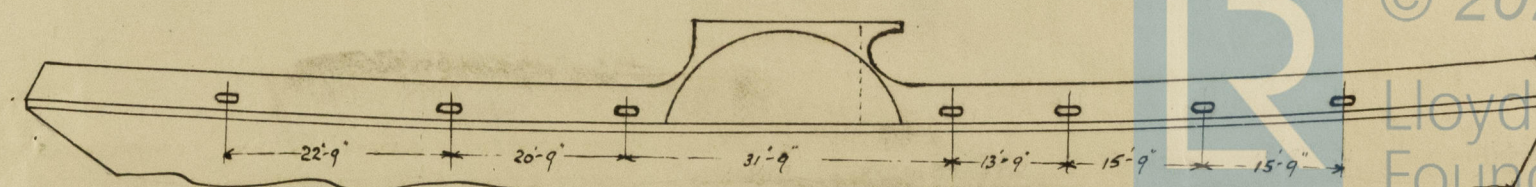
STRONG STEEL BULWARKS FITTED AT FRONT & FORWARD PART OF SIDES OF BRIDGE DECK, 3'-0" HIGH, EFFICIENTLY STAYED.

Particulars of Gangways, Lifelines, etc. :— *PROVISION MADE FOR RIGGING LIFELINES FORWARD & AFT.*

State position of each freeing port { After Well :— }
(F. and A. position and height above deck edge) { Forward Well :— } SEE SKETCH. 3" ABOVE DECK EDGE. ✓

State whether the freeing ports are fitted with shutters, bars, or rails, and give particulars of such:—BALANCED SHUTTERS & 1-3/4" DIA. ROD.

Additional area where sheer is less than standard.



PARTICULARS OF PROTECTION TO OPENINGS, ETC.

HATCHWAYS ON FREEBOARD AND SUPERSTRUCTURE DECKS.									
FREEBOARD DECK									
Description of Hatchway		To STEERING GEAR COMP.	To HAWSER ROOM	To BOSUNS STORE	To CREW SPACE FORWARD.	FREEBOARD DECK.			
Dimensions of Hatchway		2'-3" x 2'-3"	3'-0" x 3'-0"	2'-3" x 2'-3"	2'-0" DIAM.	MANHOLE TO UPPER FORE PEAK			
COAMINGS	Height above Deck	24" ✓	24" ✓	24" ✓	24" ✓	FLUSH.			
	Thickness { Sides	.40 ✓	.40 ✓	.40 ✓	.40 ✓	-			
	{ Ends	.40	.40	.40	.40	-			
	Stiffeners	-	-	-	-	-			
HATCH BEAMS	Number								
	Spacing								
	Scantling and Sketch								
	Bearing Surface		NONE						
FORE AND AFTERS	Number								
	Spacing								
	Unsupported Lengths								
	Scantling* and Sketch								
HATCH COVERS	Material	STEEL ✓	STEEL ✓	STEEL ✓	STEEL ✓	STEEL ✓			
	Thickness	.25	.25	.25	.25	.25			
	How fitted	HINGED W.T.	HINGED W.T.	HINGED W.T.	HINGED W.T.	STUDDED W.T. ✓			
	Bearing Surface	6 TOGGLES ✓	8 TOGGLES	6 TOGGLES	4 TOGGLES	1/2" STUDS SPACED 2" APT. ✓			
Spacing of Cleats		-	-	-	-	-			
Number of Tarpaulins		-	-	-	-	-			

*Are wood fore and afters steel shod at all bearing surfaces? -

Are battens and wedges efficient and in good condition? -

Are tarpaulins in good condition and in accordance with rule requirements? -

Are lashings provided in accordance with rule requirements? -

Particulars of any special features:—

SKYLIGHTS: - To CREW SPACES FORWARD, 4 IN NUMBER ON UPPER DECK, STRONGLY CONSTRUCTED OF STEEL, COAMINGS 24" HIGH, (MINIMUM), CLOSED BY STRONG HINGED STEEL WEATHERTIGHT FLAPS, GLASSES 10" DIA., PROTECTED BY PORTABLE STEEL COVERS.



© 2020

Lloyd's Register Foundation