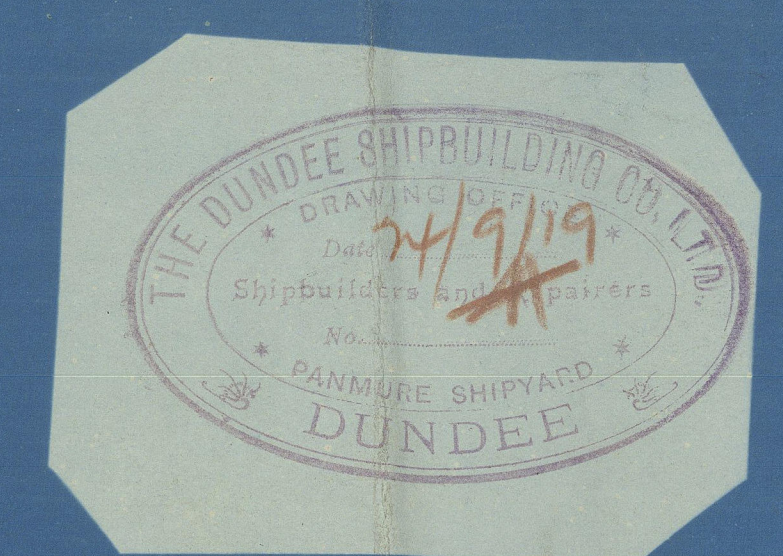


SEP 1919



Approved J.H.M.  
See Spec. 6.10.19

# YARD No 311. MIDSHIP SECTION.

SCALE 1/2"=1 FOOT.

**DIMENSIONS.**

LENGTH B.P.	257'-0"
BREADTH EXT.	37'-0"
DEPTH MID	19'-6"

## TO CLASS BS \*

L	256.75 FEET.
B	36.92
D	19.5
T	17.5
660	12.85

## EQUIPMENT NUMBER

HULL	1854 25
POOP TWEEN DECK	281 25
POXLE	19 68
SALON HOUSE	24 45
SIDEHOUSE CASING	42 33
AFT HOUSE	6 3
CAPTAIN'S CHART HOUSE	8 5
EQUIPMENT NUMBER	2207 56

## OUTFIT

2 COVER ANCHORS	36 1/4 CWTs (STOCKLESS)	36 1/4 CWTs
1 SARE	3 1/4	3 1/4
1 STEAM	11 1/2	EX STOCK
1 KRG	4 3/4	4 3/4
240 FATHOMS 1 3/8 STUD CHAIN CABLE		
75	3 3/4 STEEL WIRE ROPE (STEAM)	3 3/4
10 S	3 3/4	3 3/4
2 GPO	6 2 HANSE	6 2
2 GPO	5 2 WARPS	5 2

THE FOLLOWING PARTS TO BE JOGGLED -  
FRAME BOTTOMS, REV FRAMES, FRAME LEGS, TWEEN D° FRAMES,  
CASING, DECKHOUSE, BUNKER, & TUNNEL STIFFENERS, MAIN  
DECK THROUGHOUT & POOP, FOXLE & LOWER DECKS WHERE  
NECESSARY

1539

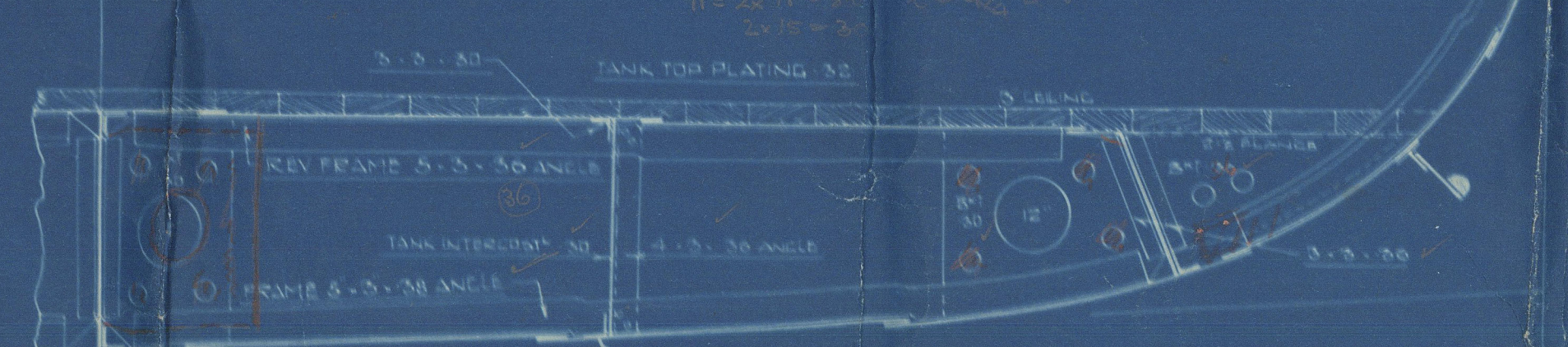
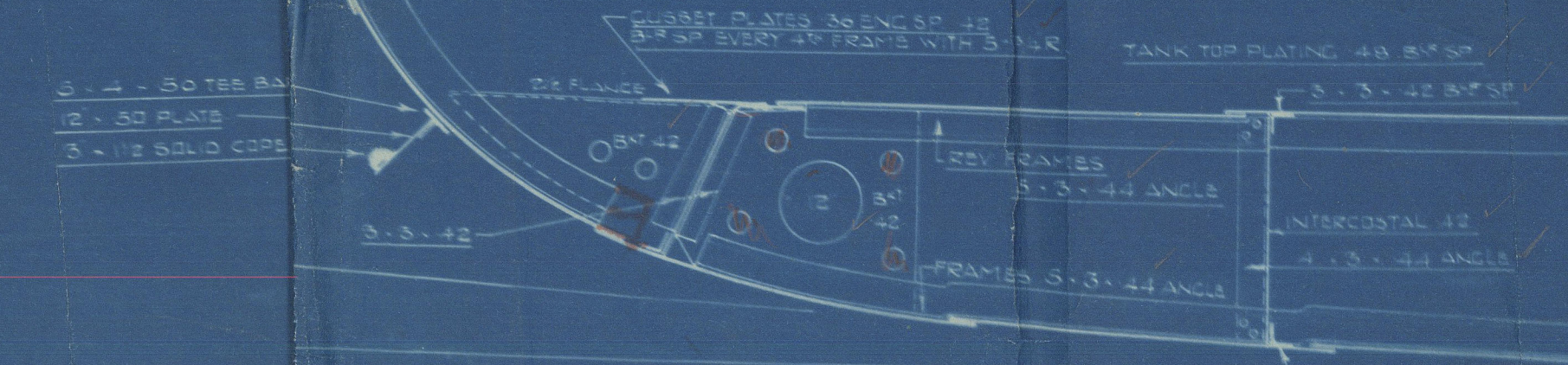
D.F.

20/9/19



**DUNDEE REQUIREMENTS**

EXPOSED WEATHER DECKS INCREASED 100% THICKER THAN RULE	
MAIN D° IN WAY OF E.B.B. CASING	05
SIDE SHELL PLATING IN WAY OF	05
CROSS BUNKERS & SHOOT	05
WHOLE OF STRUCTURE UNDER POOP	10
INCLUDING INTERCOSTAL & BULKHEADS	
SEE BULKHEADS & INTERCOSTALS	



26/9/19

1

Dundee

311

Midship Section

25' + 37' + 19' 6"

Bag

TRANSFERRED TO  
L. R. SYSTEM

TC 19. 11. 19

Dundee Shipbuilding Co

Nº 311

Midship Section

25' + 37' + 19' 6"

SS

SPERO

7-10-19

Lloyd's Register  
Foundation