

# Lloyd's Register of Shipping.

## SURVEYS FOR FREEBOARD.

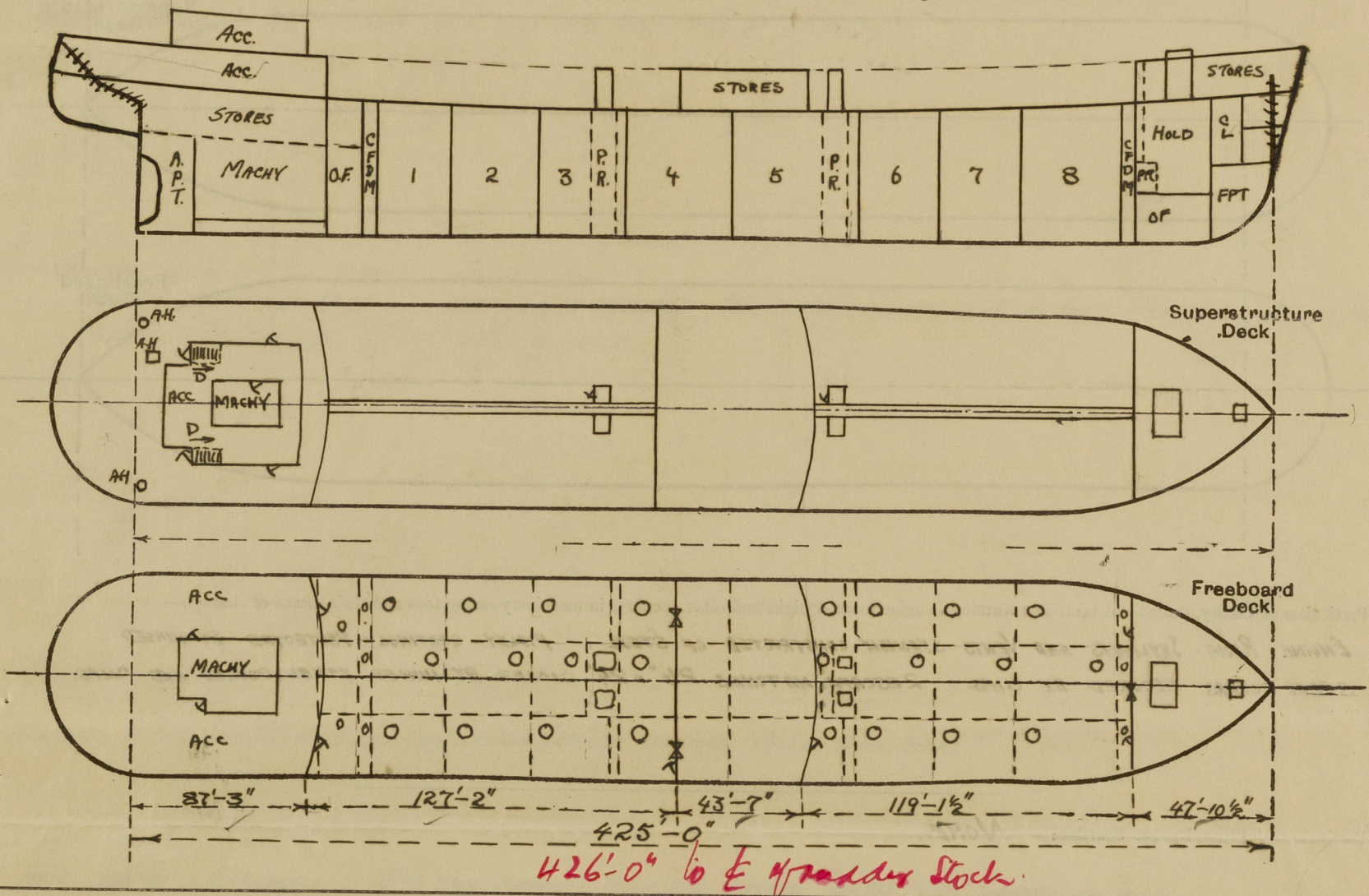
### (CONDITIONS OF ASSIGNMENT.)

Ship's Name LAMPANIA.Port of Survey NEWCASTLE-ON-TYNE

Official Number

Surveyor's Signature Al. HunterNationality and Port of Registry BRITISH LONDON.Date of Survey DURING CONSTRUCTION

Disposition and dimensions of superstructures, trunks, deckhouses and machinery casings to be inserted in the diagrams and tabular statement:—



Particulars of Superstructures, Trunks, Casings, Deckhouses.

	Coaming	Plating	Stiffeners	Spacing	End Attachments of Stiffeners	Size of Openings	Height of Sills	Height of Casings
Poop Bulkhead ...	NONE.	.44	9x3 1/2 x 44 B.A.	30/33	TOP - LUGS BTM - WELDED TO DK.	2 @ 5'0" x 2'-6"	19"	8'-0"
Raised Quarter Deck Bulkhead ...	-							
Bridge, After Bulkhead ...	NONE.	.30	4x3 x 32 O.A.	30/33	TOP } RIVETED TO BTM } DECK ANGLE	2 @ 5'4" x 3'-1" 1 @ 5'0" x 2'-0"	19"	7'-6"
Bridge, Forward Bulkhead ...	"	.44	9x3 1/2 x 44 B.A.	30/34	TOP - LUGS BTM - WELDED TO DK.	1 @ 5'0" x 2'-6" 1 @ 5'0" x 2'-6"	19"	7'-6"
Forecastle Bulkhead ...	"	.32	4x3 x 32 O.A.	28/31	TOP - FREE BTM - RIVETED TO DK. ANGLE	1 @ 5'0" x 4'-0" 1 @ 4'6" x 2'-0"	20 18	7'-6"
Trunk, Aft ...	-							
Trunk, Forward ...	-							
Exposed Machinery Casings on Freeboard or Raised Quarter Decks ...	-							
Exposed Machinery Casings on Superstructure Decks ...	.34	.30	3 x 3 x 30	30	TOP - BRACKETS BTM - FREE BELOW SUPERSTRUCTURE DK.	4 @ 5'0" x 2'-0"	18	7'-6"
Machinery Casings within Superstructures not fitted with Class I Closing Appliances ...	-							
PUMP ROOM ENTRANCES Deckhouses on Flush Deck Ships ...	NONE	.40 FWD & SIDES .30 ENDS	FWD 6x3 x 36 B.A. 4x3 x 32 O.A.	30	TOP - BRACKETS BTM - WELDED TO DK.	4'6" x 2'-3"	23	7'-6"

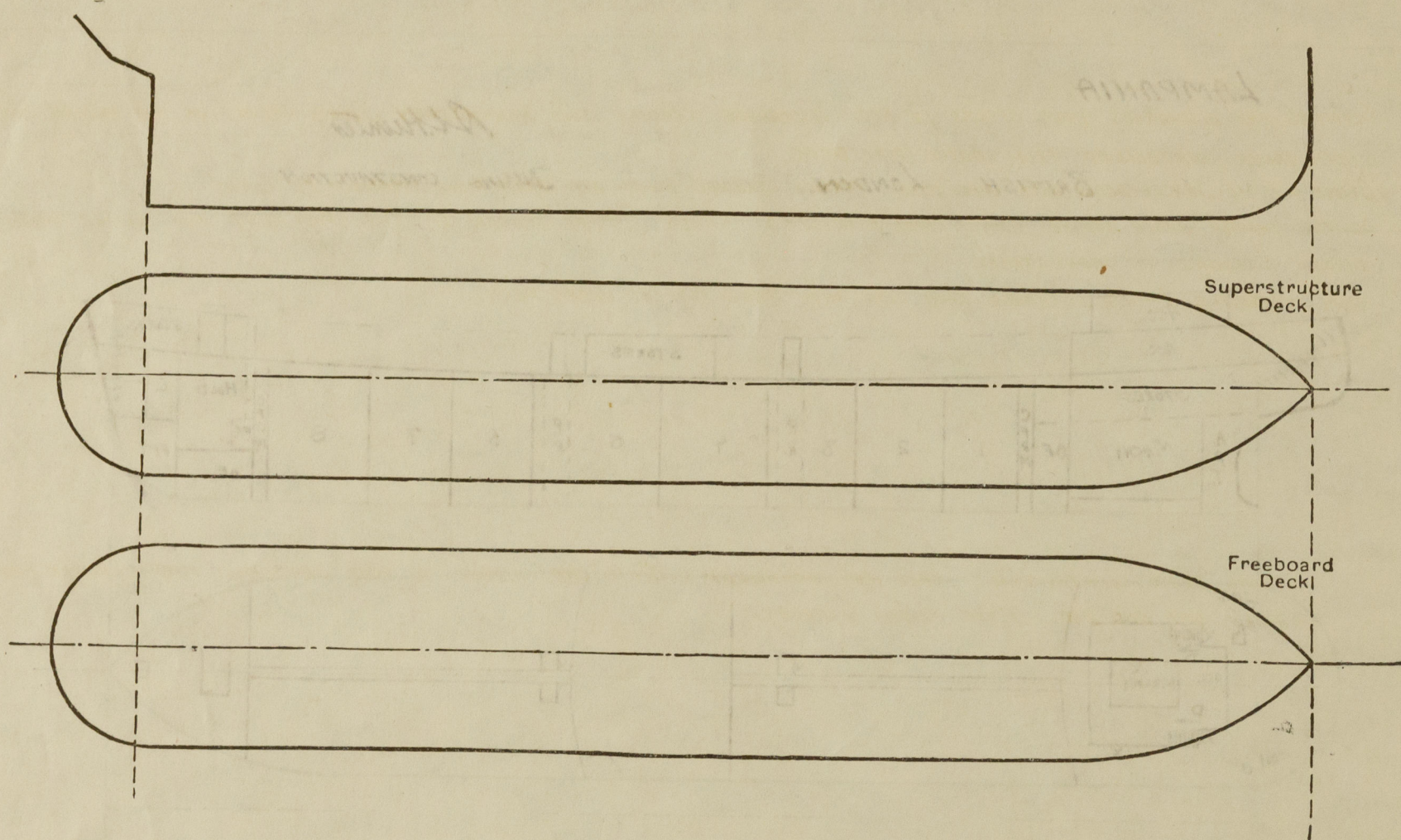
Particulars of Closing Appliances (state if capable of being manipulated from both sides).

Poop Bulkhead ...	2 HINGED STEEL W.T. DOORS CLOSED BY CLIPS MANIPULATED BOTH SIDES.
Raised Quarter Deck Bulkhead ...	1 HINGED STEEL W.T. DOOR CLOSED BY CLIPS MANIPULATED BOTH SIDES.
Bridge, After Bulkhead ...	2 PORTABLE STEEL PLATES SECURED BY HOOK BOLTS SPACED 18"
Bridge, Forward Bulkhead ...	1 HINGED STEEL W.T. DOOR CLOSED BY CLIPS MANIPULATED BOTH SIDES.
Forecastle Bulkhead ...	1 PORTABLE STEEL PLATE SECURED BY HOOK BOLTS SPACED 18"
Exposed Machinery Casings on Freeboard or Raised Quarter Decks ...	1 HINGED STEEL W.T. DOOR TO FUE CLOSED BY CLIPS MANIPULATED BOTH SIDES
Exposed Machinery Casings on Superstructure Decks ...	" " " " " PUMP ROOM " " " "
Machinery Casings within Superstructures not fitted with Class I Closing Appliances ...	HINGED WOOD DOORS LOCKS AND HANDLES BOTH SIDES
PUMP ROOM ENTRANCES Deckhouses on Flush Deck Ships ...	HINGED STEEL W.T. DOORS CLOSED BY CLIPS MANIPULATED BOTH SIDES.



## PARTICULARS OF PROTECTION TO OPENINGS, ETC.

The following diagrams should be used to indicate the positions of cargo and coaling hatchways, gangway, cargo and coaling ports, ventilators, companionways, etc., which would affect the seaworthiness of the ship:—



Particulars of fiddley, funnel and ventilator coamings, engine room skylight and other openings in machinery casing tops and their means of closing:—

ENGINE ROOM SKYLIGHTS AND VENTS STRONGLY CONSTRUCTED OF STEEL. / FIDLEY GRATINGS PROTECTED BY HINGED STEEL COVERS SECURED BY CLIPS. / RESCAPE HATCHES 24" x 24" CLOSED BY HINGED STEEL COVERS AND CLIPS.

Particulars of Flush Bunker Scuttles:— *NONE.*

Particulars of Companionways :—

(S. S/E)

ON UPPER DECK. AT AFT END OF FORECASTLE, TO AUXILIARY PUMP ROOM. OPENING IN TRUNK 4'-6" x 2'-0" SILL 24". DOOR: STEEL  
W.T. HINGED SECURED BY CLIPS MANIPULATED BOTH SIDES. ✓

ON POOP DECK. TO POOP SPACE AND MACHINERY SPACE. OPENINGS 5'-0" x 2'-0" HINGED WOOD DOORS 2" TH. OPERATED FROM BOTH SIDES, 18" STAIRS.

Particulars of Ventilators in exposed positions on freeboard and superstructure decks :—

ON UPPER DECK 4 DERRICK POST VENTS SUPPORTED BY PUMP ROOM ENTRANCES.

PoOP	v	R-10° COW VENTS COMPANIES	36' HIGH .3R TH.	6-6" COW VENTS	36' HIGH .36° TH.	10-4½" CL DOOR NECK VENTS OPENING 30° ABOVE DECK
F/CLE	x	1-12" " "	" 36" ".34"	5-10" " "	36" " .3R " 1-4½" "	" " " " 24" "
B'DGE	.	7-6" " "	" 30" " .36"			

VENTILATOR COAMINGS FITTED WITH WOOD PLUGS, CANVAS COVERS YC TO CONVENTION REQUIREMENTS.

Particulars of Air Pipes in exposed positions on freeboard, raised quarter, or superstructure decks :—

ON UPPER DECK FORD OF POOP 4-3" DIA MUSHROOM HEADS HEIGHT OF POOP AND SUPPORTED THEREBY

AFT OF FOLE 2-3" GOOSENECKS HEIGHT OF FOLE AND SUPPORTED THEREBY.

POOP DECK  
FILE " 2-3" DIA MUSHROOM HEADS 24" ABOVE DECK. 4-3" DIA 4 1/2" DIA GOOSENECKS OPENING 30" ABOVE DECK

AIR PIPES FITTED WITH CLOSING ARRANGEMENTS TO CONVENTION REQUIREMENTS

Particulars of Gangway Cargo and Coaling Ports:— *NONE*

Lampania.

Particulars of Scuppers and Sanitary Discharge Pipes :—

SCUPPERS AND DISCHARGES FROM SPACES IN POOP DISCHARGE THROUGH TWO NON-RETURN STORM-VALVES OR ONE NON-RETURN STORM VALVE CONTROLLED FROM ABOVE POOP DECK. —

BRIDGE & FOLE SPACES DRAIN ONTO UPPER DECK THROUGH SCREWED HOLES WITH BRASS PLUGS ATTACHED BY CHAINS

SCUPPERS THROUGH SHEER STRAKE ABOVE UPPER DECK 8" x 3" 6P 6S. 4 PIPE SCUPPERS (2P, 2S) AT POOP FRONT AND BRIDGE FRONT THROUGH STRINGER & SHEER STRAKE.

FROM FORECASTLE 1-2 1/2" DISCHARGE EACH SIDE WITH SCREW PLUG AT UPPER DECK.

Particulars of Side Scuttles:—

STRONG BRASS CONSTRUCTION. ~~EAST SIDE.~~  
~~EAST END DEADLIGHTS~~ 8" x 10" DIA FITTED TO POOP SIDES AND FRONT, RAIBBE FRONT  
SIDES & AFT END. BHD. FILE SIDES & FRONT.

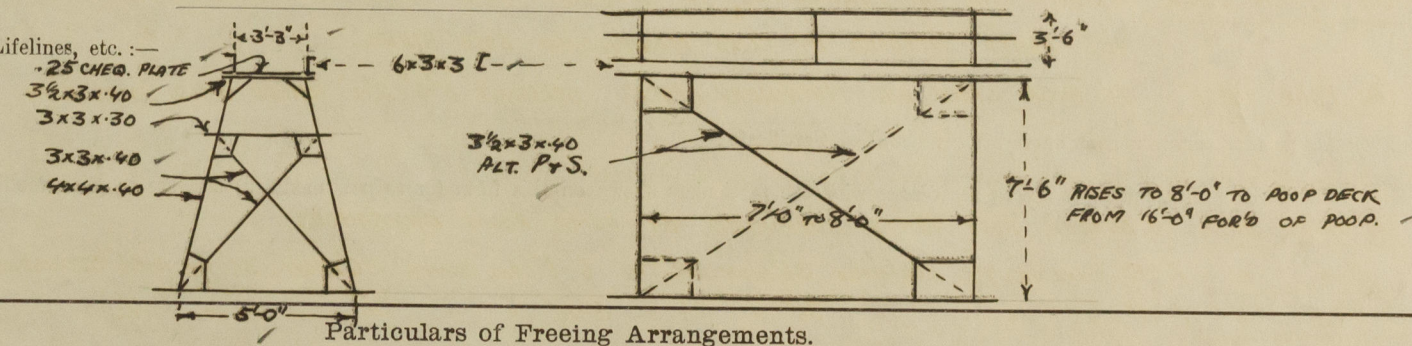
Vertical distance of Sill of lowest Side Scuttle above top of keel — (NO SIDE SCUTTLES BELOW UPPER DECK)

Particulars of Guard Rails :—

POOP, BRIDGE & FORECASTLE: 3'-6" HIGH STAINLESS STEEL STANCHIONS SPACED APPROX 4'-9" WELDED TO DECK.

UPPER DECK: 3'-6" " 3" " " " " 4'-9" " " "  
" " BULKHEADS. 3'-6" " 30" TH. 7" B.A. RAIL. 6" B.A. STANCHIONS SPACED 6'-0" EXTRA STIFFENING AT ERECTIONS.

Particulars of Gangways, Lifelines, etc. :—



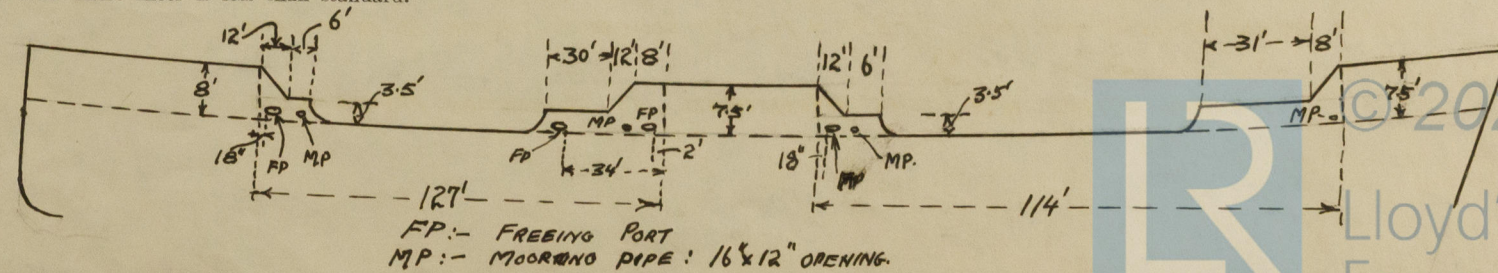
Particulars of Freeing Arrangements.

Particulars of Freeing Arrangements.						
	Length of Bulwark	Height of Bulwark	Size of Freeing Ports	Number each side	Area each side	Rule area each side
After Well ... ..	68'-0"	} SEE SKETCH	3'-0" x 1'-25"	3	+ 59' open rails 10-25	79 sq ft + 59 open rails
Forward Well ... ..	57'-0"			1	34 ft + 62 open rails	59.5 of open rails

State position of each freeing port	... ..	{ After Well :— Forward Well :—       }	<b>SEE SKETCH.</b>
(F. and A. position and height above deck edge)			

State whether the freeing ports are fitted with shutters, bars, or rails, and give particulars of such:— *HORIZONTAL BARR.*

Additional area where sheer is less than standard.





PARTICULARS OF PROTECTION TO OPENINGS, ETC.

HATCHWAYS ON FREEBOARD AND SUPERSTRUCTURE DECKS.									
ON UPPER DECK									
ON F.C.L.E. DECK									
ON POOP DECK									
Description of Hatchway	...	...	...	...	...	...	...	...	...
Dimensions of Hatchway	...	...	...	...	...	...	...	...	...
COAMINGS	Height above Deck	...	...	...	...	...	...	...	...
	Thickness	...	...	...	...	...	...	...	...
	Sides	...	...	...	...	...	...	...	...
	Ends	...	...	...	...	...	...	...	...
HATCH BEAMS	Number	...	...	...	...	...	...	...	...
	Spacing	...	...	...	...	...	...	...	...
	Scantling and Sketch	...	...	...	...	...	...	...	...
	Bearing Surface	...	...	...	...	...	...	...	...
FORE AND AFTERS	Number	...	...	...	...	...	...	...	...
	Spacing	...	...	...	...	...	...	...	...
	Unsupported Lengths	...	...	...	...	...	...	...	...
	Scantling and Sketch	...	...	...	...	...	...	...	...
HATCH COVERS	Material	...	...	...	...	...	...	...	...
	Thickness	...	...	...	...	...	...	...	...
	How fitted	...	...	...	...	...	...	...	...
	Bearing Surface	...	...	...	...	...	...	...	...
Spacing of Cleats	...	...	...	...	...	...	...	...	...
Number of Tarpaulins	...	...	...	...	...	...	...	...	...
*Are wood fore and afters steel shod at all bearing surfaces ?									
Are battens and wedges efficient and in good condition ?									
Are tarpaulins in good condition and in accordance with rule requirements ?									
Are lashings provided in accordance with rule requirements ?									

Particulars of any special features :—

Endorsement at first survey and at surveys for renewal of Certificate :—

The fittings and appliances are in accordance with the particulars shown on this form (or as now modified) and are in good condition.

ML-D



© 2020

Lloyd's Register Foundation