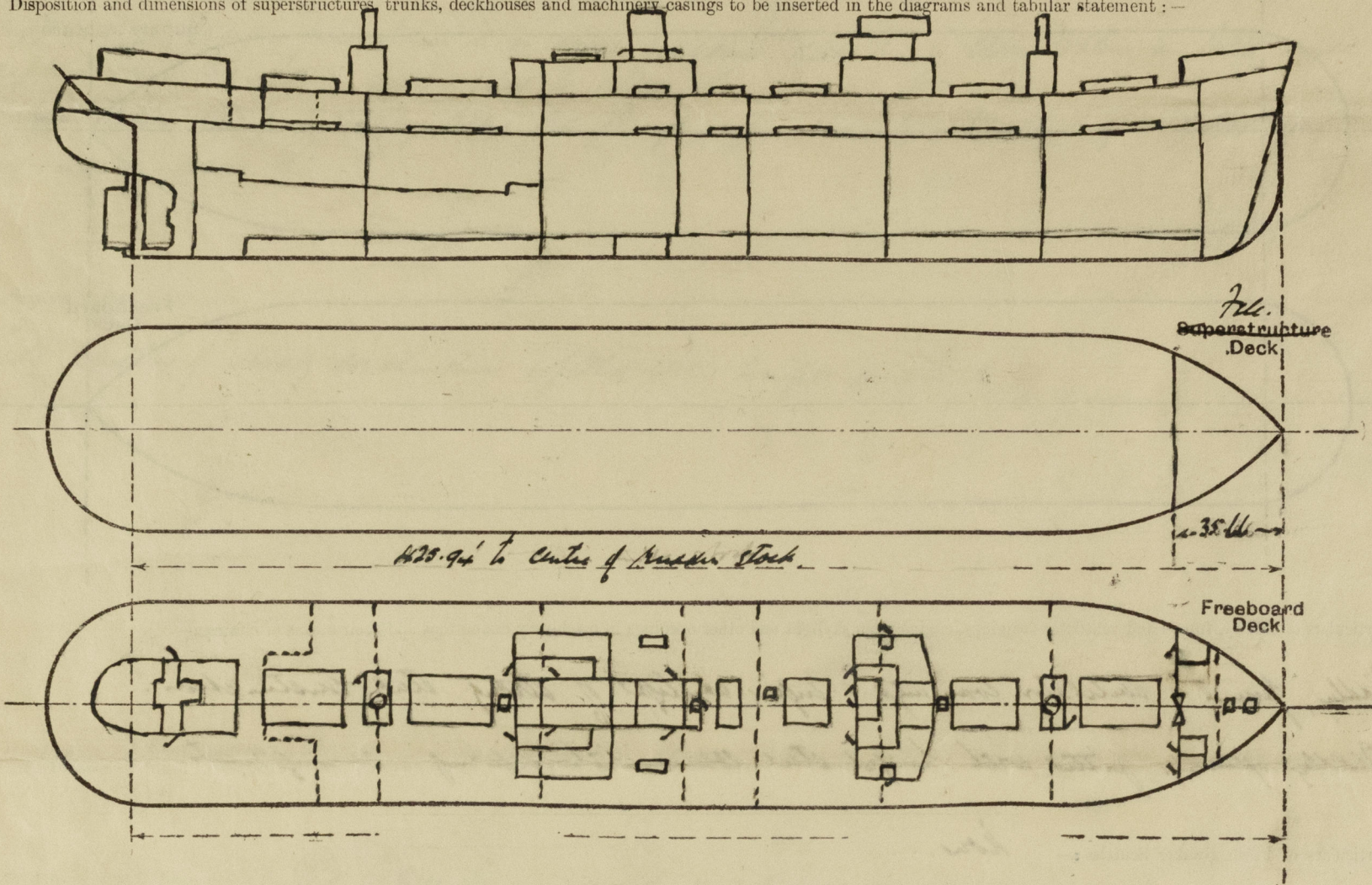


NEWCASTLE-ON-TYNE
Lloyd's Register of Shipping.
SURVEYS FOR FREEBOARD.
(CONDITIONS OF ASSIGNMENT.)

Index No. 37710
(For London Office only).

Ship's Name *EMPIRE LADY* Port of Survey *NEWCASTLE-ON-TYNE*
Official Number *169183* Surveyor's Signature *A. Alhoi*
Nationality and Port of Registry *British. Newcastle.* Date of Survey *During construction.*

Disposition and dimensions of superstructures, trunks, deckhouses and machinery casings to be inserted in the diagrams and tabular statement:—

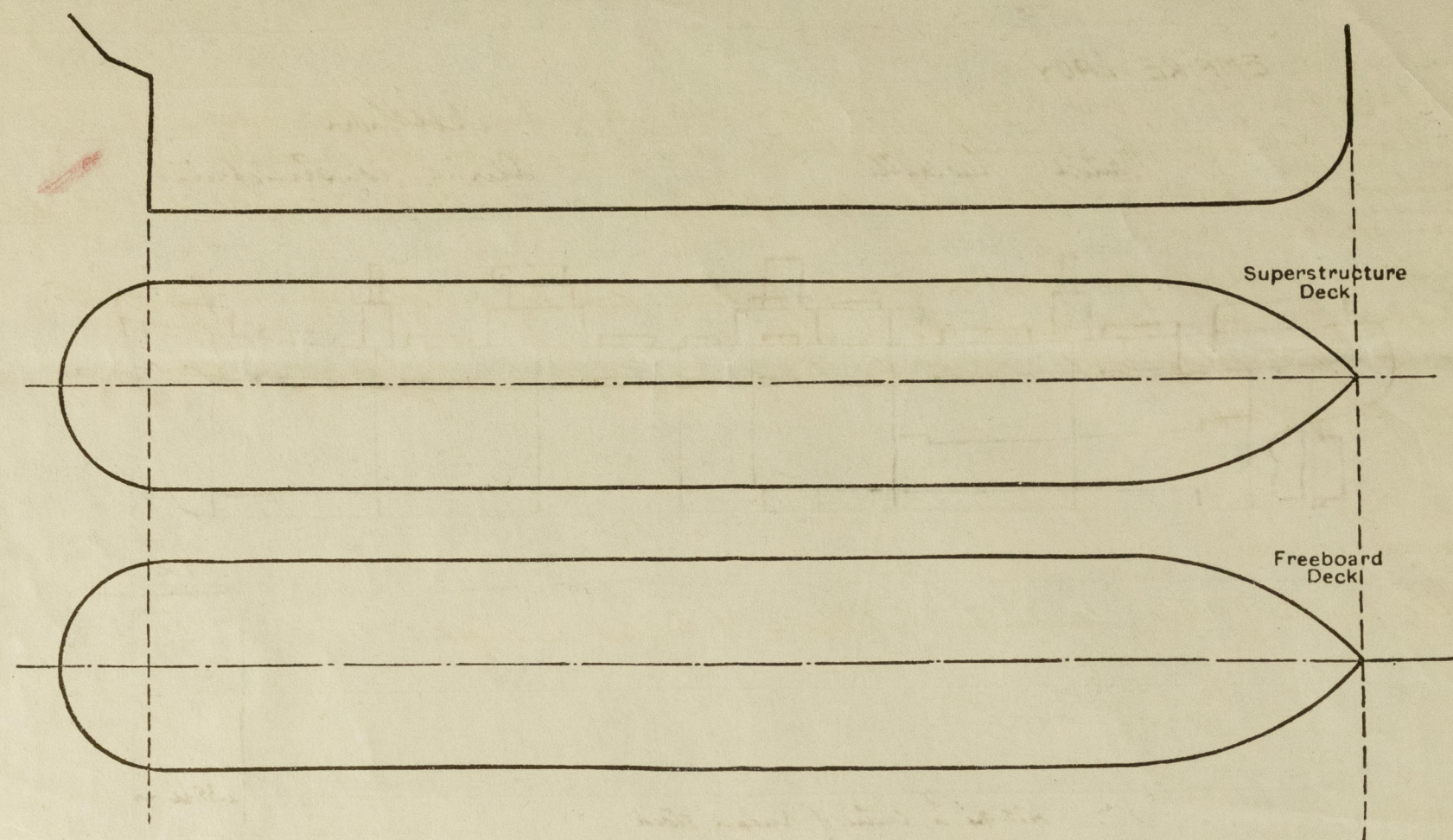


Particulars of Superstructures, Trunks, Casings, Deckhouses.								
	Coaming	Plating	Stiffeners	Spacing	End Attachments of Stiffeners	Size of Openings	Height of Sills	Height of Casings
Poop Bulkhead	✓							
Raised Quarter Deck Bulkhead ...	✓							
Bridge, After Bulkhead	✓							
Bridge, Forward Bulkhead	✓							
Forecastle Bulkhead	30	30	4x3x 32L	30"	Reinforced by Boundary Str.	{ 1. 4'0. 4'-2'4" } 1. 7'0. 7'-4" 5.0. 5'-2'3"	12" 9"	6'-9"
Trunk, Aft								
Trunk, Forward								
Exposed Machinery Casings on Freeboard or Raised Quarter Decks ...	35	30	2x3x 40L	31"	Blk. at Top	4'-9" x 2'-3"	22"	7'-9 1/2"
Exposed Machinery Casings on Superstructure Decks								
Machinery Casings within Superstructures not fitted with Class I Closing Appliances	34	30	5x3x 35L + 1x 40L	34"	Blk. Top	2'0" x 6' x 22" 1'0" x 5' x 4'	24"	7'-6"
Deckhouses on Flush Deck Ships	25	25	5x3x 35L	36"				
	25	25	5x3x 30L	30"				

Particulars of Closing Appliances (state if capable of being manipulated from both sides).

Poop Bulkhead	
Raised Quarter Deck Bulkhead ...	
Bridge, After Bulkhead	
Bridge, Forward Bulkhead	
Forecastle Bulkhead	1 W. door secured by turnbuckles operated both sides. Portable door plate secured by hook both sides about 12' apart. 4 H. Steel doors operated both sides.
Exposed Machinery Casings on Freeboard or Raised Quarter Decks ...	Hinged Steel doors operate both sides
Exposed Machinery Casings on Superstructure Decks	
Machinery Casings within Superstructures not fitted with Class I Closing Appliances	
Deckhouses on Flush Deck Ships ...	2 H. Steel W. Doors & 1 H. Steel door in halves vertically. Operate both sides.

The following diagrams should be used to indicate the positions of cargo and coaling hatchways, gangway, cargo and coaling ports, ventilators, companionways, etc., which would affect the seaworthiness of the ship :—



Particulars of fiddley, funnel and ventilator coamings, engine room skylight and other openings in machinery casing tops and their means of closing :—

Slightly, funnel & ventilator coverings & super skylight of strong steel construction.
 Slightly opening fitted with hinged steel covers with clearing arrangements. ✓

Particulars of Flush Bunker Scuttles:—

None. ✓

Particulars of Companionways:—

Access to No. 16 Hatch in fore end of mast house with hinged steel door 3'6" x 18". Sills 30".

Access to No 2 Hatch through 2'9" x 3' hatch at aft end of No 2 Hatchway. Lanning 9' x 40" with hinged steel door.

Access to No 3 Hatch through 22' x 22" hatch between No 3 or hatchway. Lanning 8' x 40" with hinged steel door. Craps.

Access to No 4 hatch in fore end of boiler casing hinged steel door 5'6" x 16". Sills 26". Access to No 5 Hatch through hatch at fore end of No 5 Hatchway. Lanning 9' x 40" with steel door.

Access to crew aft in steel deck house, hinged steel door separate with sills. Sills 26".

Access to crew fore end aft through 7'6" door. Access to fore end aft through 7'6" door. Access to crew aft in steel deck house, hinged steel door separate with sills. Sills 26".

Access to boiler spaces through Saloon door side (No 1). Steel door separate with sills. Sills 26".

Particulars of Ventilators in exposed positions on freeboard and superstructure decks :—

Ventilation openings on Feb. 1. - front and back frames 24" H. in height; remainder 32" in height. ✓
 " " on back Horse 24" High in casing 24" High. ✓

Drawings constructed to Rule Drawings & requirements stated by work plans & canvas covers.

Particulars of Air Pipes in exposed positions on freeboard, raised quarter, or superstructure decks :—

All air pipes on platform thick 2" in height & closed by canvas covers or with gauge screen at mouth.

Particulars of Gangway Cargo and Coaling Ports:—

None

Particulars of Scuppers and Sanitary Discharge Pipes :—

Discharges from W.C.s in true space aft. led to storm valves in Tween decks & with storm valves at fore. ✓
Discharges from Wash basin & sink led to double storm valves in Tween decks, both accessible. ✓
Discharges from Showers & clippers in Tween decks aft. led to second storm valves below 2nd deck opened from foreboard deck. ✓
Scupper & discharges from spaces on or above foreboard deck led to storm valves in Tween decks. ✓
Scupper from Tween deck spaces led to bulges. ✓
Scupper from Refrig. Machinery room led through engine room bulkhead to bulge & fitted with self closing cocks. ✓

Particulars of Side Scuttles :—

Sid. Saddle of strong construction fitted with hinges and light. ✓

Vertical distance of Sill of lowest Side Scuttle above top of keel..... 34' 6" approx.

Particulars of Guard Rails :—

Particulars of Guard Rails:— Steel Bulwarks in way of midship accommodation. ✓
Remainder clear of Pile & on Pile open rails 3'6" high, 3 rails in height; Stanchions 4'6" apart. ✓

Particulars of Gangways, Lifelines, etc.:—


Life lines further forward esp. of third ship and house. ✓

Particulars of Freeing Arrangements.						
	Length of Bulwark	Height of Bulwark	Size of Freeing Ports	Number each side	Area each side	Rule area each side
After Well						
Forward Well						

State position of each freeing port { After Well :—
(F. and A. position and height above deck edge) { Forward Well :—

State whether the freeing ports are fitted with shutters, bars, or rails, and give particulars of such :—

Additional area where sheer is less than standard.



© 2020
Lloyd's Re

PARTICULARS OF PROTECTION TO OPENINGS, ETC.

HATCHWAYS ON FREEBOARD AND SUPERSTRUCTURE DECKS.										
<i>Freeboard deck. — 1st — Casing 1/2</i>										
Description of Hatchway	No. 1.	No. 2+3	No. 4.	No. 5+6.	Coal Hatch.	Donk Hatch.	Upper Hatch.	Coal Hatch.		
Dimensions of Hatchway	3' 6" x 20'	3' 1" x 20'	12' 11" x 20'	3' 1" x 20'	15' x 5'	4' x 3'	2' x 2' 6"	3' 2" x 20'		
Height above Deck	30"	30"	30"	42"	30"	9" 8"	9" 8"	9" 8"		
Thickness	45	45	45	45	44	40	40	40		
Stiffeners	2 1/2 x 4 1/2	2 1/2 x 4 1/2	2 1/2 x 4 1/2	2 1/2 x 4 1/2	7 x 3 x 5 1/2					
Brackets, Stays	5	5	1	5						
Number	5	5	1	5						
Spacing	5' 3"	5' 2"	6' 5 1/2"	5' 2"						
Scantling and Sketch	18 1/2 x 36	16 3/4 x 36	19 1/2 x 38	16 3/4 x 36						
Bearing Surface	3 1/2	3 1/2	3 1/2	3 1/2						
Number										
Spacing										
Unsupported Lengths										
Scantling* and Sketch										
Bearing Surface										
Material	OP.	OP.	OP.	OP.	OP.	OP.	OP.	OP.		
Thickness	2 1/2	2 1/2	3	2 1/2	2 1/2	2 1/2	2 1/2	2 1/2		
How fitted (part)	F.A.	F.A.	F.A.	F.A.	P.A.			F.A.		
Bearing Surface	3"	3"	3"	3"	2 1/2	2 1/2	2 1/2	2 1/2		
Spacing of Cleats	24"	24"	24"	24"	24"	24"	18"	24"		
Number of Tarpaulins	2	2	2	2	2	1	1	2		
<p>*Are wood fore and afters steel shod at all bearing surfaces? <i>Yes.</i></p> <p>Are battens and wedges efficient and in good condition? <i>Yes.</i></p> <p>Are tarpaulins in good condition and in accordance with rule requirements? <i>Yes.</i></p> <p>Are lashings provided in accordance with rule requirements? <i>Yes.</i></p>										

Particulars of any special features:—

This Scantlings of this vessel have been approved for an extreme draught of 26' 9"

Super Loading decided.

- Efficient locking arrangements are fitted to the No. 1 Hatchway on the freeboard deck.*
- Inner deck bulkheads are either intact or fitted with hinged steel U.Y. doors.*

Endorsement at first survey and at surveys for renewal of Certificate:—

The fittings and appliances are in accordance with the particulars shown on this form (or as now modified) and are in good condition.



© 2020

Lloyd's Register
Foundation