

Rpt. 9a.

Port of

Cyprian Prince

Continuation of Report No.

dated

2804 1/2
~~28049~~ on the

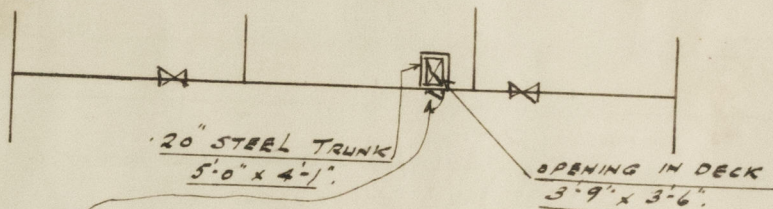
GLASCOW REPORT No 57358

GLASGOW. 13/8/36.

15 AUG 1976

S.S. "CYPRIAN PRINCE."

DOOR IN AFTER BRIDGE BULKHEAD.
TO DOMESTIC REFRIGERATED
SPACE



30" STEEL DOOR CLOSED BY 8-3/4" SHUTTER AND FITTED WITH LOCK,
HASP & PADLOCK. SILL 23" HIGH. OPENING 5'-0" x 2'-7".

See Form CMC - dated 13/8/36

Opening in fore-castle bulkhead is, in addition to hinged wood door,
closed by wood boards 3" thick full height in riveted channels

003377-003384 0104

© 2020

Lloyd's Register
Foundation