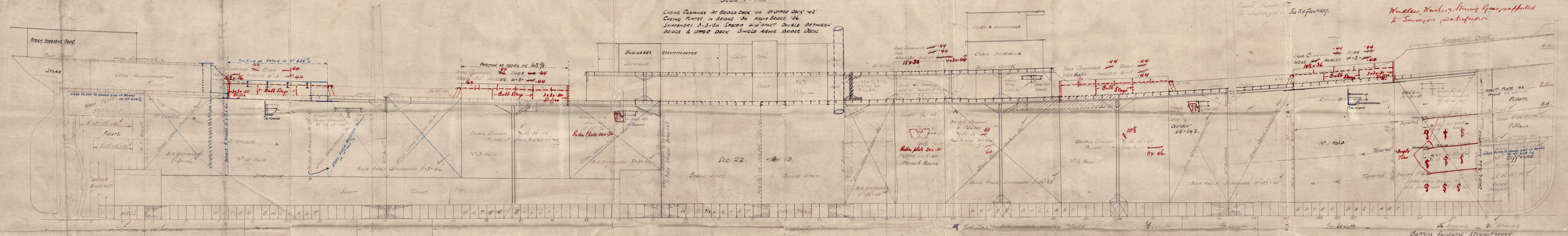


10.19.

PROFILE & DECK PLANS.

LENGTH B.P. 390'-0"
BEAM EXTREME 52'-0"
DEPTH MOULDED 29'-6"
Scale 1/4" = 1 foot

CASING COAMINGS AT BRIDGE DECK 1/4" AT UPPER DECK 1/2"
CASING PLATES IN BRIDGE 3/8" ABOVE BRIDGE 3/8"
STIFFENERS 3/8" 3/4" SPACED 4" APART DOUBLE BETWEEN BRIDGE & UPPER DECK SINGLE ABOVE BRIDGE DECK.

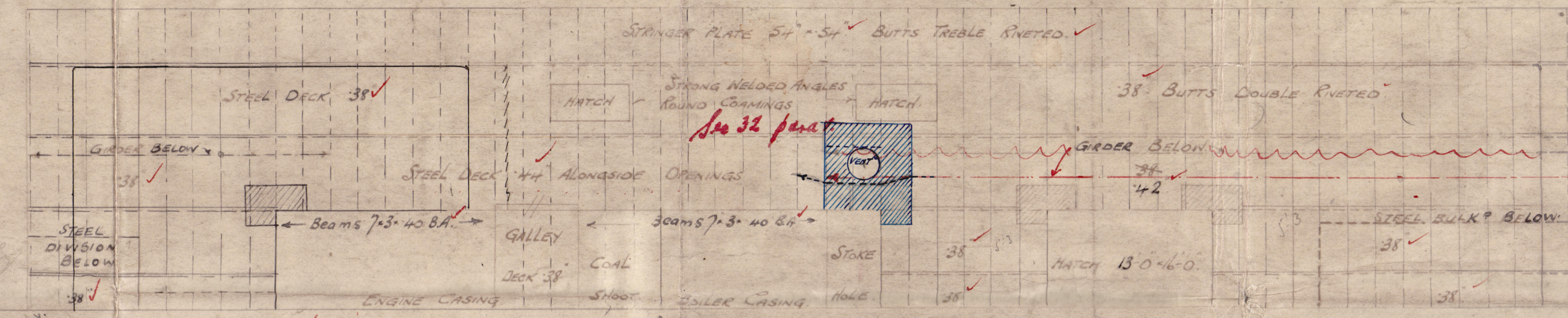
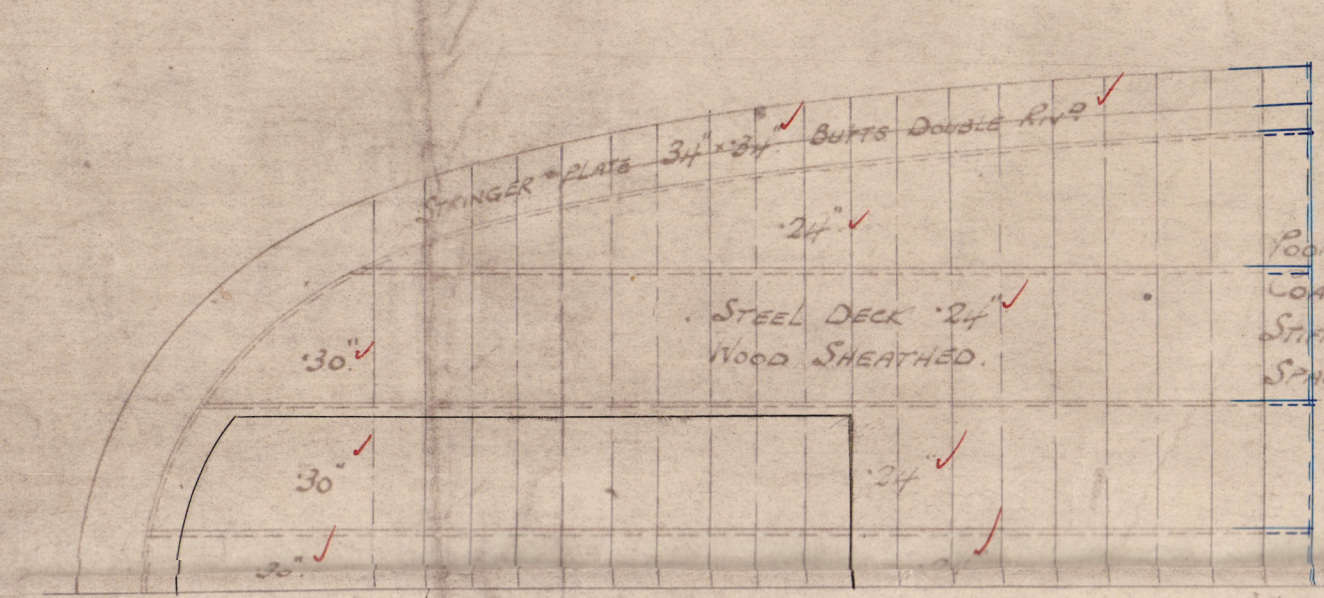


Masts supported by 16 Surveyors Satisfactory.

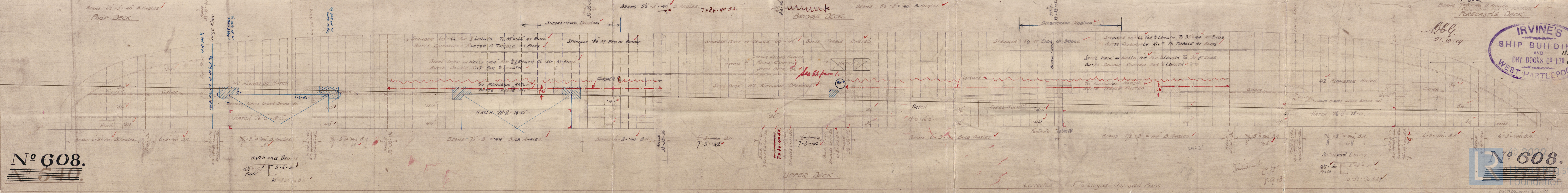
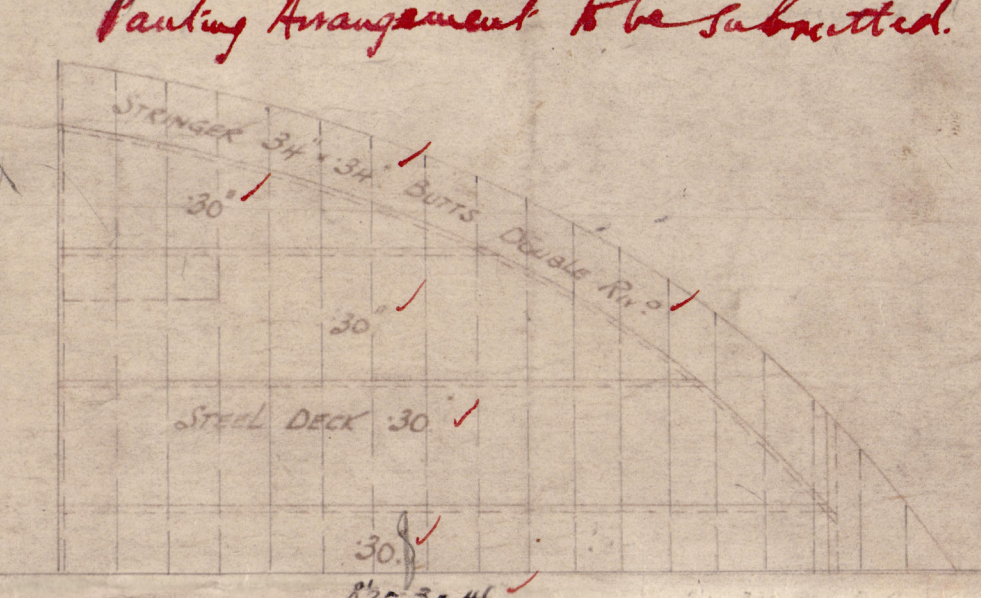
Mudlugs, Nails, & Screws supported to Surveyors Satisfaction

Bulkheads to be efficiently strengthened to take Deck Side Guides.

Bottom forward, Strengthened as per Rule. to be submitted. Painting Arrangement to be submitted.



BRIDGE FRONT 36'-0" COAMING 1/2" 1/4" STIFFENERS 5/8" 3/4" B.A. SPACED 30" APART.



N° 608.

IRVINE'S SHIP BUILDING AND DRY DOCKS CO LTD WEST HARTLEPOOL

N° 608.

003369-003376-0101

J. J. Irvin & S. B. & D. D. Co

S. S. N° 608

Profile & Deck
Plans

Nov. 1919.

S. S. "PENCARROW"

Rept. N° 15906.



© 2020

Lloyd's Register
Foundation

003369-003376-0101